



# wwPDB X-ray Structure Validation Summary Report ⓘ

Nov 15, 2023 – 06:23 pm GMT

PDB ID : 8C3O  
Title : Crystal structure of autotaxin gamma and compound MEY-003  
Authors : Eymery, M.C.; McCarthy, A.A.  
Deposited on : 2022-12-27  
Resolution : 2.47 Å(reported)

This is a wwPDB X-ray Structure Validation Summary Report for a publicly released PDB entry.

We welcome your comments at [validation@mail.wwpdb.org](mailto:validation@mail.wwpdb.org)

A user guide is available at

<https://www.wwpdb.org/validation/2017/XrayValidationReportHelp>

with specific help available everywhere you see the ⓘ symbol.

The types of validation reports are described at

<http://www.wwpdb.org/validation/2017/FAQs#types>.

---

The following versions of software and data (see [references ⓘ](#)) were used in the production of this report:

MolProbity : 4.02b-467  
Mogul : 1.8.4, CSD as541be (2020)  
Xtriage (Phenix) : 1.13  
EDS : 2.36  
buster-report : 1.1.7 (2018)  
Percentile statistics : 20191225.v01 (using entries in the PDB archive December 25th 2019)  
Refmac : 5.8.0158  
CCP4 : 7.0.044 (Gargrove)  
Ideal geometry (proteins) : Engh & Huber (2001)  
Ideal geometry (DNA, RNA) : Parkinson et al. (1996)  
Validation Pipeline (wwPDB-VP) : 2.36

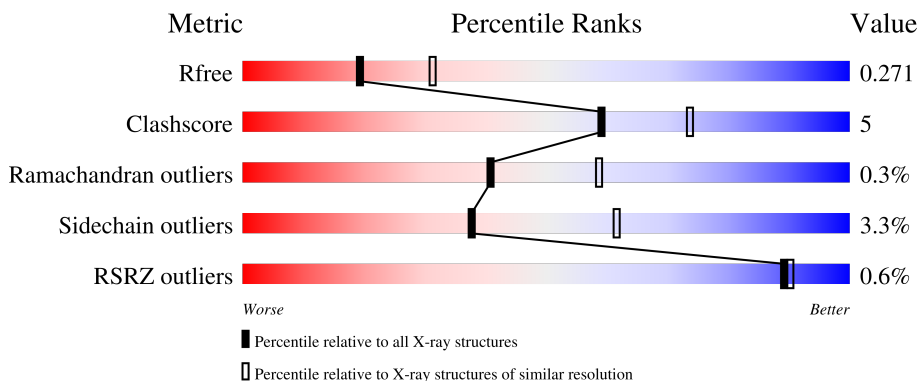
# 1 Overall quality at a glance

The following experimental techniques were used to determine the structure:

*X-RAY DIFFRACTION*

The reported resolution of this entry is 2.47 Å.

Percentile scores (ranging between 0-100) for global validation metrics of the entry are shown in the following graphic. The table shows the number of entries on which the scores are based.



Metric	Whole archive (#Entries)	Similar resolution (#Entries, resolution range(Å))
$R_{free}$	130704	5857 (2.50-2.46)
Clashscore	141614	6594 (2.50-2.46)
Ramachandran outliers	138981	6469 (2.50-2.46)
Sidechain outliers	138945	6471 (2.50-2.46)
RSRZ outliers	127900	5738 (2.50-2.46)

The table below summarises the geometric issues observed across the polymeric chains and their fit to the electron density. The red, orange, yellow and green segments of the lower bar indicate the fraction of residues that contain outliers for  $\geq 3$ , 2, 1 and 0 types of geometric quality criteria respectively. A grey segment represents the fraction of residues that are not modelled. The numeric value for each fraction is indicated below the corresponding segment, with a dot representing fractions  $\leq 5\%$ . The upper red bar (where present) indicates the fraction of residues that have poor fit to the electron density. The numeric value is given above the bar.

Mol	Chain	Length	Quality of chain
1	A	888	 75% 14% 11%
1	B	888	 75% 11% 14%
2	C	3	 67% 33%
3	D	2	 100%

## 2 Entry composition [i](#)

There are 10 unique types of molecules in this entry. The entry contains 13027 atoms, of which 0 are hydrogens and 0 are deuteriums.

In the tables below, the ZeroOcc column contains the number of atoms modelled with zero occupancy, the AltConf column contains the number of residues with at least one atom in alternate conformation and the Trace column contains the number of residues modelled with at most 2 atoms.

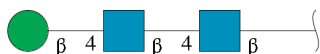
- Molecule 1 is a protein called Ectonucleotide pyrophosphatase/phosphodiesterase family member 2.

Mol	Chain	Residues	Atoms					ZeroOcc	AltConf	Trace
			Total	C	N	O	S			
1	A	794	6464	4115	1111	1190	48	3	12	0
1	B	768	6262	3986	1075	1153	48	5	10	0

There are 4 discrepancies between the modelled and reference sequences:

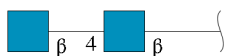
Chain	Residue	Modelled	Actual	Comment	Reference
A	54	ALA	ASN	engineered mutation	UNP Q13822
A	411	ALA	ASN	engineered mutation	UNP Q13822
B	54	ALA	ASN	engineered mutation	UNP Q13822
B	411	ALA	ASN	engineered mutation	UNP Q13822

- Molecule 2 is an oligosaccharide called beta-D-mannopyranose-(1-4)-2-acetamido-2-deoxy-beta-D-glucopyranose-(1-4)-2-acetamido-2-deoxy-beta-D-glucopyranose.



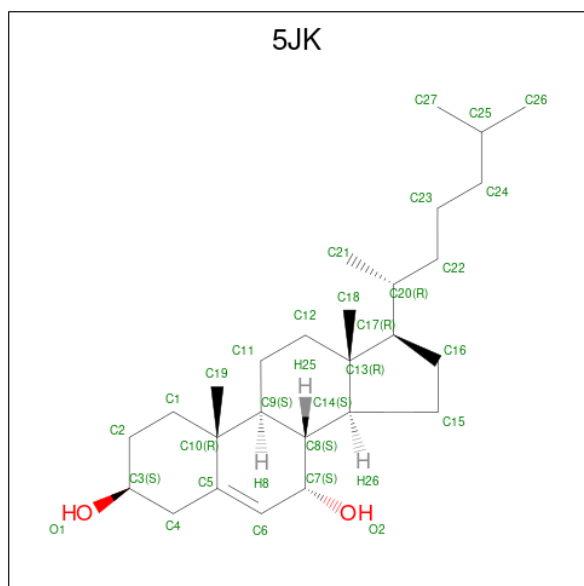
Mol	Chain	Residues	Atoms				ZeroOcc	AltConf	Trace
			Total	C	N	O			
2	C	3	39	22	2	15	0	0	0

- Molecule 3 is an oligosaccharide called 2-acetamido-2-deoxy-beta-D-glucopyranose-(1-4)-2-acetamido-2-deoxy-beta-D-glucopyranose.



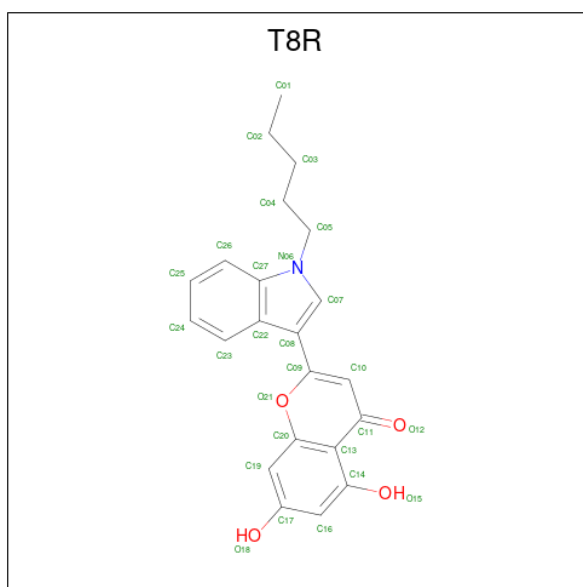
Mol	Chain	Residues	Atoms				ZeroOcc	AltConf	Trace
3	D	2	Total	C	N	O	0	0	0
			28	16	2	10			

- Molecule 4 is 7alpha-hydroxycholesterol (three-letter code: 5JK) (formula:  $C_{27}H_{46}O_2$ ).



Mol	Chain	Residues	Atoms			ZeroOcc	AltConf
4	A	1	Total	C	O	0	0
			29	27	2		
4	B	1	Total	C	O	0	0
			29	27	2		

- Molecule 5 is 5,7-bis(oxidanyl)-2-(1-pentylindol-3-yl)chromen-4-one (three-letter code: T8R) (formula:  $C_{22}H_{21}NO_4$ ) (labeled as "Ligand of Interest" by depositor).



Mol	Chain	Residues	Atoms			ZeroOcc	AltConf	
5	A	1	Total	C	N	O	0	0
			27	22	1	4		
5	B	1	Total	C	N	O	0	0
			27	22	1	4		

- Molecule 6 is GLYCEROL (three-letter code: GOL) (formula: C<sub>3</sub>H<sub>8</sub>O<sub>3</sub>).



Mol	Chain	Residues	Atoms			ZeroOcc	AltConf
6	A	1	Total	C	O	0	0
			6	3	3		
6	A	1	Total	C	O	0	0
			6	3	3		

*Continued on next page...*

*Continued from previous page...*

Mol	Chain	Residues	Atoms		ZeroOcc	AltConf
6	A	1	Total	C O	0	0
			6	3 3		
6	A	1	Total	C O	0	0
			6	3 3		
6	B	1	Total	C O	0	0
			6	3 3		

- Molecule 7 is ZINC ION (three-letter code: ZN) (formula: Zn).

Mol	Chain	Residues	Atoms		ZeroOcc	AltConf
7	A	2	Total	Zn	0	0
			2	2		
7	B	2	Total	Zn	0	0
			2	2		

- Molecule 8 is IODIDE ION (three-letter code: IOD) (formula: I).

Mol	Chain	Residues	Atoms		ZeroOcc	AltConf
8	A	21	Total	I	0	0
			21	21		
8	B	16	Total	I	0	0
			16	16		

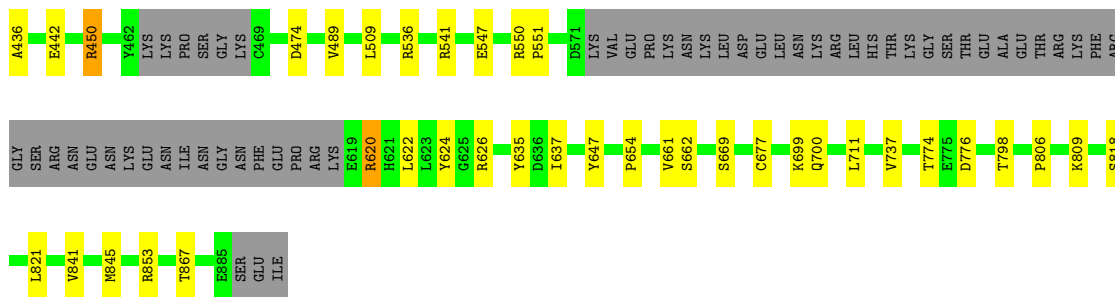
- Molecule 9 is CALCIUM ION (three-letter code: CA) (formula: Ca).

Mol	Chain	Residues	Atoms		ZeroOcc	AltConf
9	A	1	Total	Ca	0	0
			1	1		
9	B	1	Total	Ca	0	0
			1	1		

- Molecule 10 is water.

Mol	Chain	Residues	Atoms		ZeroOcc	AltConf
10	A	24	Total	O	0	0
			24	24		
10	B	25	Total	O	0	0
			25	25		





- Molecule 2: beta-D-mannopyranose-(1-4)-2-acetamido-2-deoxy-beta-D-glucofuranose-(1-4)-2-acetamido-2-deoxy-beta-D-glucofuranose

Chain C: 67% 33%

MAG1  
MAG2  
BMA3

- Molecule 3: 2-acetamido-2-deoxy-beta-D-glucofuranose-(1-4)-2-acetamido-2-deoxy-beta-D-glucofuranose

Chain D: 100%

MAG1  
MAG2



## 4 Data and refinement statistics

Property	Value	Source
Space group	P 1 21 1	Depositor
Cell constants a, b, c, $\alpha$ , $\beta$ , $\gamma$	53.92Å 288.48Å 57.64Å 90.00° 90.12° 90.00°	Depositor
Resolution (Å)	57.64 – 2.47 57.64 – 2.47	Depositor EDS
% Data completeness (in resolution range)	69.7 (57.64-2.47) 69.5 (57.64-2.47)	Depositor EDS
$R_{merge}$	(Not available)	Depositor
$R_{sym}$	(Not available)	Depositor
$\langle I/\sigma(I) \rangle$ <sup>1</sup>	1.56 (at 2.48Å)	Xtrriage
Refinement program	PHENIX 1.20.1_4487	Depositor
R, $R_{free}$	0.214 , 0.271 0.218 , 0.271	Depositor DCC
$R_{free}$ test set	2186 reflections (4.99%)	wwPDB-VP
Wilson B-factor (Å <sup>2</sup> )	25.7	Xtrriage
Anisotropy	0.082	Xtrriage
Bulk solvent $k_{sol}$ (e/Å <sup>3</sup> ), $B_{sol}$ (Å <sup>2</sup> )	0.34 , 1.2	EDS
L-test for twinning <sup>2</sup>	$\langle  L  \rangle = 0.48$ , $\langle L^2 \rangle = 0.31$	Xtrriage
Estimated twinning fraction	0.216 for h,-k,-l	Xtrriage
$F_o, F_c$ correlation	0.89	EDS
Total number of atoms	13027	wwPDB-VP
Average B, all atoms (Å <sup>2</sup> )	28.0	wwPDB-VP

Xtrriage's analysis on translational NCS is as follows: *The largest off-origin peak in the Patterson function is 3.83% of the height of the origin peak. No significant pseudotranslation is detected.*

<sup>1</sup>Intensities estimated from amplitudes.

<sup>2</sup>Theoretical values of  $\langle |L| \rangle$ ,  $\langle L^2 \rangle$  for acentric reflections are 0.5, 0.333 respectively for untwinned datasets, and 0.375, 0.2 for perfectly twinned datasets.

## 5 Model quality

### 5.1 Standard geometry

Bond lengths and bond angles in the following residue types are not validated in this section: IOD, 5JK, NAG, CA, ZN, BMA, T8R, GOL

The Z score for a bond length (or angle) is the number of standard deviations the observed value is removed from the expected value. A bond length (or angle) with  $|Z| > 5$  is considered an outlier worth inspection. RMSZ is the root-mean-square of all Z scores of the bond lengths (or angles).

Mol	Chain	Bond lengths		Bond angles	
		RMSZ	# Z  >5	RMSZ	# Z  >5
1	A	0.25	0/6682	0.49	0/9059
1	B	0.25	0/6465	0.48	0/8766
All	All	0.25	0/13147	0.49	0/17825

There are no bond length outliers.

There are no bond angle outliers.

There are no chirality outliers.

There are no planarity outliers.

### 5.2 Too-close contacts

In the following table, the Non-H and H(model) columns list the number of non-hydrogen atoms and hydrogen atoms in the chain respectively. The H(added) column lists the number of hydrogen atoms added and optimized by MolProbity. The Clashes column lists the number of clashes within the asymmetric unit, whereas Symm-Clashes lists symmetry-related clashes.

Mol	Chain	Non-H	H(model)	H(added)	Clashes	Symm-Clashes
1	A	6464	0	6258	65	0
1	B	6262	0	6052	53	0
2	C	39	0	34	0	0
3	D	28	0	25	0	0
4	A	29	0	0	0	0
4	B	29	0	0	0	0
5	A	27	0	0	0	0
5	B	27	0	0	0	0
6	A	24	0	32	1	0
6	B	6	0	8	1	0
7	A	2	0	0	0	0

*Continued on next page...*

Continued from previous page...

Mol	Chain	Non-H	H(model)	H(added)	Clashes	Symm-Clashes
7	B	2	0	0	0	0
8	A	21	0	0	4	0
8	B	16	0	0	2	0
9	A	1	0	0	0	0
9	B	1	0	0	0	0
10	A	24	0	0	0	0
10	B	25	0	0	0	0
All	All	13027	0	12409	118	0

The all-atom clashscore is defined as the number of clashes found per 1000 atoms (including hydrogen atoms). The all-atom clashscore for this structure is 5.

The worst 5 of 118 close contacts within the same asymmetric unit are listed below, sorted by their clash magnitude.

Atom-1	Atom-2	Interatomic distance (Å)	Clash overlap (Å)
1:B:375:ASN:O	1:B:416:LYS:NZ	2.17	0.78
1:A:78:ASN:ND2	1:A:275:PHE:O	2.16	0.77
1:B:112:ARG:HH22	1:B:124:CYS:HA	1.52	0.73
1:B:165:PRO:HG2	1:B:352:VAL:HG22	1.71	0.72
1:A:105:LYS:H	1:A:105:LYS:HE2	1.54	0.71

There are no symmetry-related clashes.

## 5.3 Torsion angles [i](#)

### 5.3.1 Protein backbone [i](#)

In the following table, the Percentiles column shows the percent Ramachandran outliers of the chain as a percentile score with respect to all X-ray entries followed by that with respect to entries of similar resolution.

The Analysed column shows the number of residues for which the backbone conformation was analysed, and the total number of residues.

Mol	Chain	Analysed	Favoured	Allowed	Outliers	Percentiles
1	A	796/888 (90%)	753 (95%)	41 (5%)	2 (0%)	41 59
1	B	767/888 (86%)	735 (96%)	30 (4%)	2 (0%)	41 59
All	All	1563/1776 (88%)	1488 (95%)	71 (4%)	4 (0%)	41 59

All (4) Ramachandran outliers are listed below:

Mol	Chain	Res	Type
1	A	112	ARG
1	B	108	CYS
1	A	436	ALA
1	B	436	ALA

### 5.3.2 Protein sidechains [i](#)

In the following table, the Percentiles column shows the percent sidechain outliers of the chain as a percentile score with respect to all X-ray entries followed by that with respect to entries of similar resolution.

The Analysed column shows the number of residues for which the sidechain conformation was analysed, and the total number of residues.

Mol	Chain	Analysed	Rotameric	Outliers	Percentiles	
1	A	729/800 (91%)	696 (96%)	33 (4%)	27	48
1	B	705/800 (88%)	689 (98%)	16 (2%)	50	74
All	All	1434/1600 (90%)	1385 (97%)	49 (3%)	38	61

5 of 49 residues with a non-rotameric sidechain are listed below:

Mol	Chain	Res	Type
1	A	724	VAL
1	B	184	LYS
1	A	798	THR
1	A	853[B]	ARG
1	B	347	LYS

Sometimes sidechains can be flipped to improve hydrogen bonding and reduce clashes. All (2) such sidechains are listed below:

Mol	Chain	Res	Type
1	A	577	ASN
1	B	428	HIS

### 5.3.3 RNA [i](#)

There are no RNA molecules in this entry.

## 5.4 Non-standard residues in protein, DNA, RNA chains [i](#)

There are no non-standard protein/DNA/RNA residues in this entry.

## 5.5 Carbohydrates [i](#)

5 monosaccharides are modelled in this entry.

In the following table, the Counts columns list the number of bonds (or angles) for which Mogul statistics could be retrieved, the number of bonds (or angles) that are observed in the model and the number of bonds (or angles) that are defined in the Chemical Component Dictionary. The Link column lists molecule types, if any, to which the group is linked. The Z score for a bond length (or angle) is the number of standard deviations the observed value is removed from the expected value. A bond length (or angle) with  $|Z| > 2$  is considered an outlier worth inspection. RMSZ is the root-mean-square of all Z scores of the bond lengths (or angles).

Mol	Type	Chain	Res	Link	Bond lengths			Bond angles		
					Counts	RMSZ	# Z  > 2	Counts	RMSZ	# Z  > 2
2	NAG	C	1	2,1	14,14,15	0.58	1 (7%)	17,19,21	0.66	0
2	NAG	C	2	2	14,14,15	0.27	0	17,19,21	0.49	0
2	BMA	C	3	2	11,11,12	0.50	0	15,15,17	0.73	0
3	NAG	D	1	1,3	14,14,15	0.49	0	17,19,21	0.61	0
3	NAG	D	2	3	14,14,15	0.20	0	17,19,21	0.45	0

In the following table, the Chirals column lists the number of chiral outliers, the number of chiral centers analysed, the number of these observed in the model and the number defined in the Chemical Component Dictionary. Similar counts are reported in the Torsion and Rings columns. '-' means no outliers of that kind were identified.

Mol	Type	Chain	Res	Link	Chirals	Torsions	Rings
2	NAG	C	1	2,1	-	2/6/23/26	0/1/1/1
2	NAG	C	2	2	-	2/6/23/26	0/1/1/1
2	BMA	C	3	2	-	0/2/19/22	0/1/1/1
3	NAG	D	1	1,3	-	2/6/23/26	0/1/1/1
3	NAG	D	2	3	-	2/6/23/26	0/1/1/1

All (1) bond length outliers are listed below:

Mol	Chain	Res	Type	Atoms	Z	Observed(Å)	Ideal(Å)
2	C	1	NAG	O5-C1	-2.06	1.40	1.43

There are no bond angle outliers.

There are no chirality outliers.

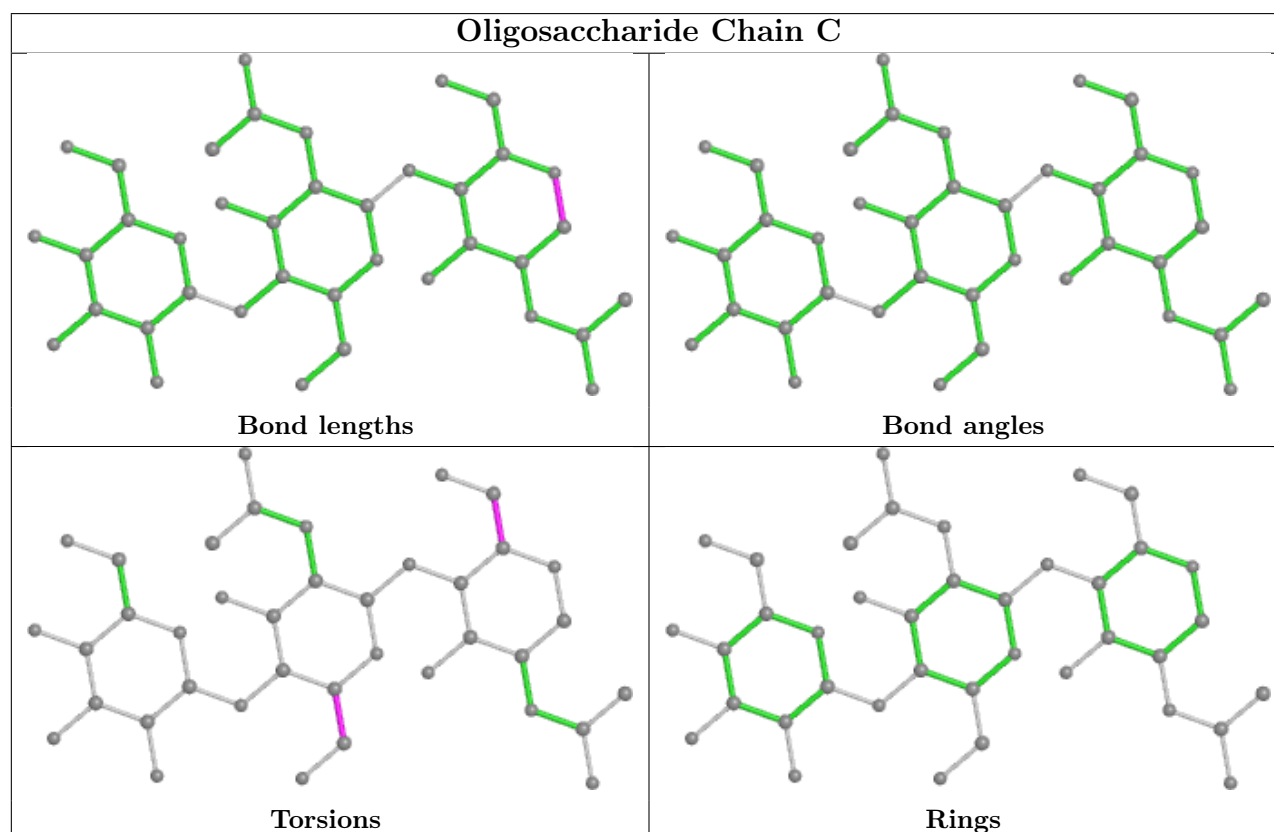
5 of 8 torsion outliers are listed below:

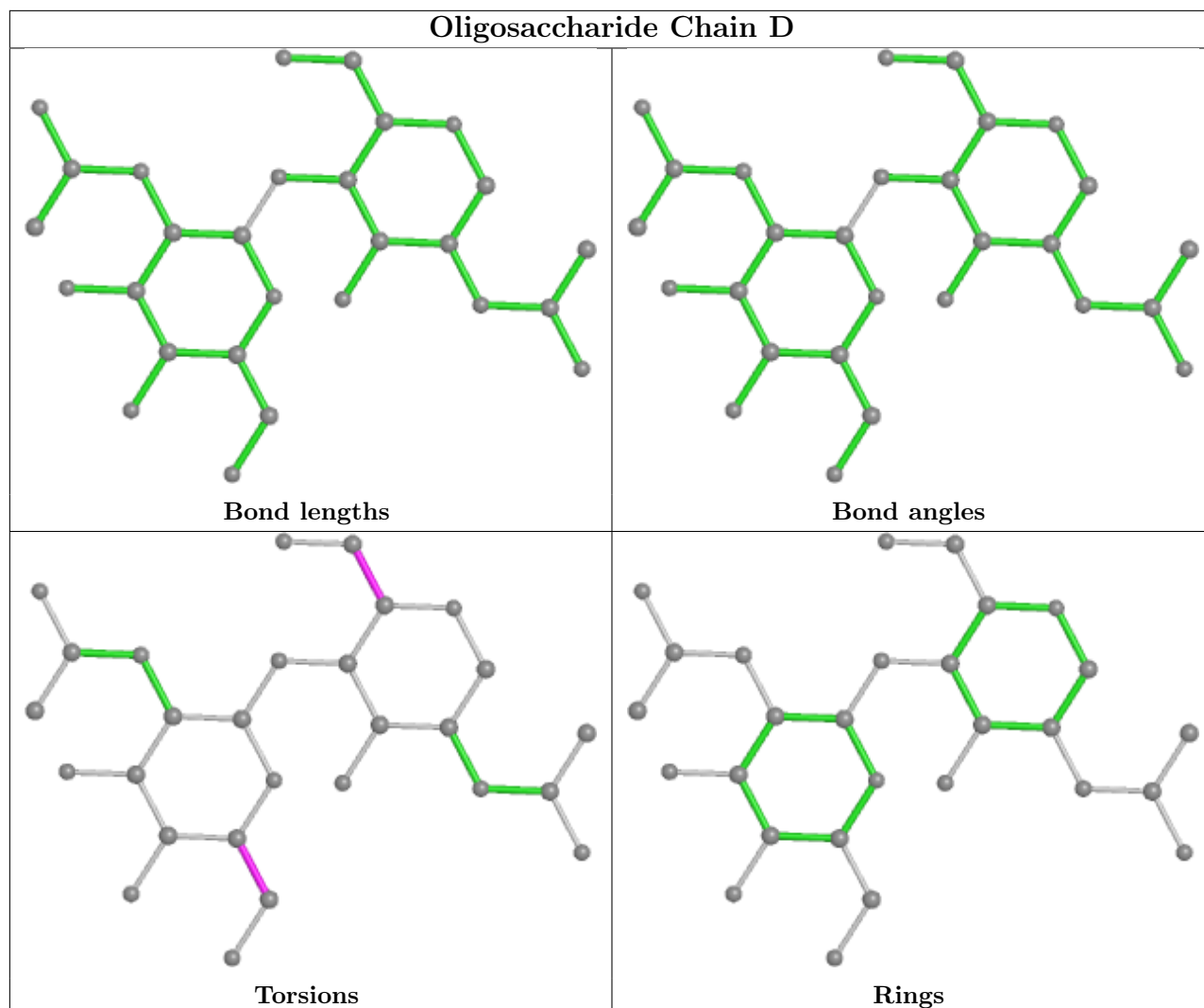
Mol	Chain	Res	Type	Atoms
2	C	2	NAG	O5-C5-C6-O6
3	D	2	NAG	O5-C5-C6-O6
2	C	2	NAG	C4-C5-C6-O6
3	D	2	NAG	C4-C5-C6-O6
2	C	1	NAG	C4-C5-C6-O6

There are no ring outliers.

No monomer is involved in short contacts.

The following is a two-dimensional graphical depiction of Mogul quality analysis of bond lengths, bond angles, torsion angles, and ring geometry for oligosaccharide.





## 5.6 Ligand geometry [i](#)

Of 52 ligands modelled in this entry, 43 are monoatomic - leaving 9 for Mogul analysis.

In the following table, the Counts columns list the number of bonds (or angles) for which Mogul statistics could be retrieved, the number of bonds (or angles) that are observed in the model and the number of bonds (or angles) that are defined in the Chemical Component Dictionary. The Link column lists molecule types, if any, to which the group is linked. The Z score for a bond length (or angle) is the number of standard deviations the observed value is removed from the expected value. A bond length (or angle) with  $|Z| > 2$  is considered an outlier worth inspection. RMSZ is the root-mean-square of all Z scores of the bond lengths (or angles).

Mol	Type	Chain	Res	Link	Bond lengths			Bond angles		
					Counts	RMSZ	$\# Z  > 2$	Counts	RMSZ	$\# Z  > 2$
6	GOL	A	903	-	5,5,5	0.95	0	5,5,5	0.98	0
6	GOL	A	905	-	5,5,5	0.91	0	5,5,5	1.00	0
5	T8R	B	902	-	28,30,30	<b>3.14</b>	<b>14 (50%)</b>	36,43,43	<b>2.58</b>	<b>8 (22%)</b>

Mol	Type	Chain	Res	Link	Bond lengths			Bond angles		
					Counts	RMSZ	# Z  > 2	Counts	RMSZ	# Z  > 2
5	T8R	A	902	-	28,30,30	3.14	14 (50%)	36,43,43	2.57	9 (25%)
4	5JK	A	901	-	32,32,32	4.11	14 (43%)	47,50,50	2.60	12 (25%)
6	GOL	B	903	-	5,5,5	0.91	0	5,5,5	1.00	0
6	GOL	A	904	-	5,5,5	0.91	0	5,5,5	1.00	0
4	5JK	B	901	-	32,32,32	4.12	15 (46%)	47,50,50	2.45	14 (29%)
6	GOL	A	906	-	5,5,5	0.92	0	5,5,5	0.97	0

In the following table, the Chirals column lists the number of chiral outliers, the number of chiral centers analysed, the number of these observed in the model and the number defined in the Chemical Component Dictionary. Similar counts are reported in the Torsion and Rings columns. '-' means no outliers of that kind were identified.

Mol	Type	Chain	Res	Link	Chirals	Torsions	Rings
6	GOL	A	903	-	-	0/4/4/4	-
6	GOL	A	905	-	-	4/4/4/4	-
5	T8R	B	902	-	-	2/5/9/9	0/4/4/4
5	T8R	A	902	-	-	2/5/9/9	0/4/4/4
4	5JK	A	901	-	-	1/10/71/71	0/4/4/4
6	GOL	B	903	-	-	1/4/4/4	-
6	GOL	A	904	-	-	3/4/4/4	-
4	5JK	B	901	-	-	1/10/71/71	0/4/4/4
6	GOL	A	906	-	-	0/4/4/4	-

The worst 5 of 57 bond length outliers are listed below:

Mol	Chain	Res	Type	Atoms	Z	Observed(Å)	Ideal(Å)
4	B	901	5JK	C6-C5	14.28	1.58	1.33
4	A	901	5JK	C6-C5	14.21	1.58	1.33
5	A	902	T8R	C08-C22	10.55	1.51	1.42
5	B	902	T8R	C08-C22	10.47	1.51	1.42
4	B	901	5JK	C8-C7	9.20	1.63	1.53

The worst 5 of 43 bond angle outliers are listed below:

Mol	Chain	Res	Type	Atoms	Z	Observed(°)	Ideal(°)
4	A	901	5JK	C7-C6-C5	-13.02	116.95	125.42
4	B	901	5JK	C7-C6-C5	-11.16	118.16	125.42
5	A	902	T8R	O21-C09-C08	8.30	120.54	110.57
5	B	902	T8R	O21-C09-C08	7.90	120.06	110.57
5	B	902	T8R	O21-C09-C10	-7.05	114.79	121.68



There are no chirality outliers.

5 of 14 torsion outliers are listed below:

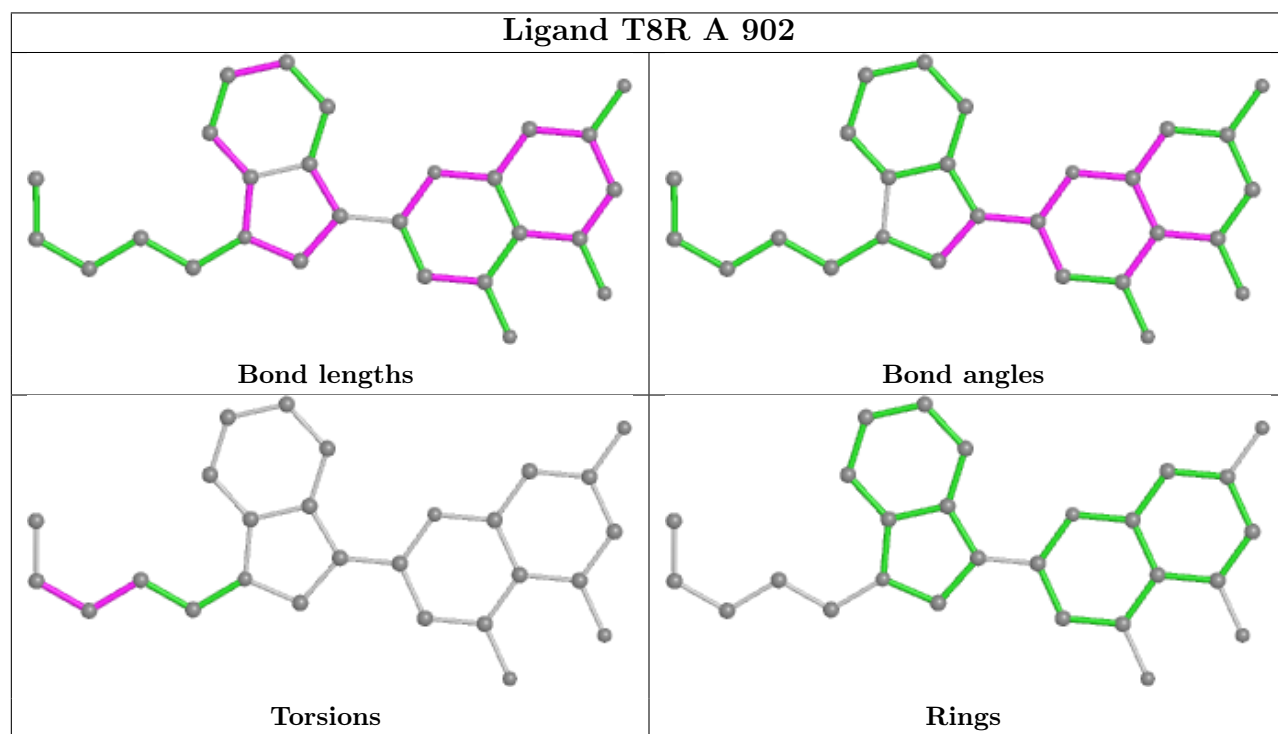
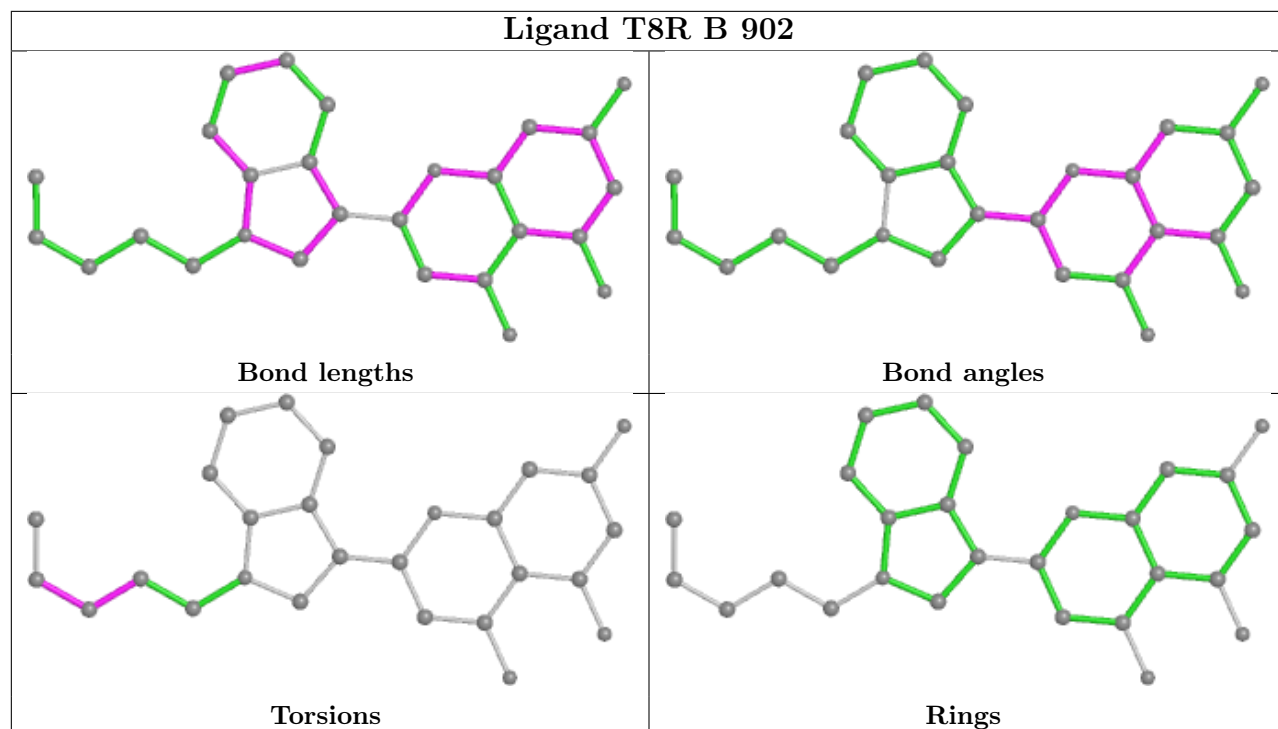
Mol	Chain	Res	Type	Atoms
6	A	905	GOL	O1-C1-C2-O2
6	A	905	GOL	O1-C1-C2-C3
6	A	904	GOL	C1-C2-C3-O3
6	A	905	GOL	C1-C2-C3-O3
6	A	905	GOL	O2-C2-C3-O3

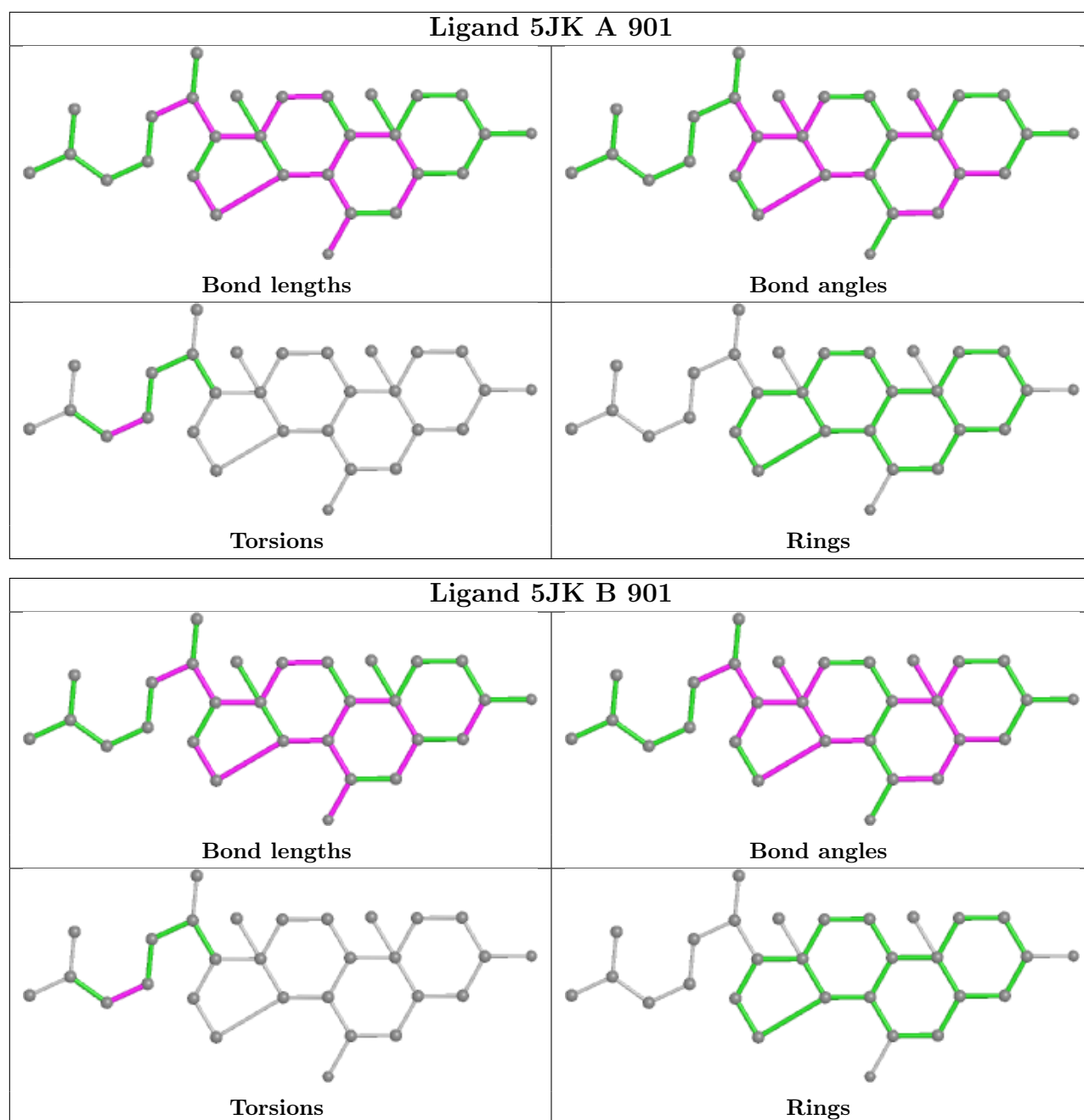
There are no ring outliers.

2 monomers are involved in 2 short contacts:

Mol	Chain	Res	Type	Clashes	Symm-Clashes
6	A	903	GOL	1	0
6	B	903	GOL	1	0

The following is a two-dimensional graphical depiction of Mogul quality analysis of bond lengths, bond angles, torsion angles, and ring geometry for all instances of the Ligand of Interest. In addition, ligands with molecular weight > 250 and outliers as shown on the validation Tables will also be included. For torsion angles, if less than 5% of the Mogul distribution of torsion angles is within 10 degrees of the torsion angle in question, then that torsion angle is considered an outlier. Any bond that is central to one or more torsion angles identified as an outlier by Mogul will be highlighted in the graph. For rings, the root-mean-square deviation (RMSD) between the ring in question and similar rings identified by Mogul is calculated over all ring torsion angles. If the average RMSD is greater than 60 degrees and the minimal RMSD between the ring in question and any Mogul-identified rings is also greater than 60 degrees, then that ring is considered an outlier. The outliers are highlighted in purple. The color gray indicates Mogul did not find sufficient equivalents in the CSD to analyse the geometry.





## 5.7 Other polymers [i](#)

There are no such residues in this entry.

## 5.8 Polymer linkage issues [i](#)

There are no chain breaks in this entry.

## 6 Fit of model and data [i](#)

### 6.1 Protein, DNA and RNA chains [i](#)

In the following table, the column labelled '#RSRZ > 2' contains the number (and percentage) of RSRZ outliers, followed by percent RSRZ outliers for the chain as percentile scores relative to all X-ray entries and entries of similar resolution. The OWAB column contains the minimum, median, 95<sup>th</sup> percentile and maximum values of the occupancy-weighted average B-factor per residue. The column labelled 'Q < 0.9' lists the number of (and percentage) of residues with an average occupancy less than 0.9.

Mol	Chain	Analysed	<RSRZ>	#RSRZ>2	OWAB(Å <sup>2</sup> )	Q<0.9
1	A	794/888 (89%)	-0.54	10 (1%) 77   78	13, 23, 59, 92	0
1	B	768/888 (86%)	-0.60	0 100   100	13, 23, 54, 78	0
All	All	1562/1776 (87%)	-0.57	10 (0%) 89   90	13, 23, 57, 92	0

The worst 5 of 10 RSRZ outliers are listed below:

Mol	Chain	Res	Type	RSRZ
1	A	469	CYS	3.9
1	A	71	PRO	3.7
1	A	69	ALA	3.7
1	A	55	ILE	3.6
1	A	587	HIS	3.4

### 6.2 Non-standard residues in protein, DNA, RNA chains [i](#)

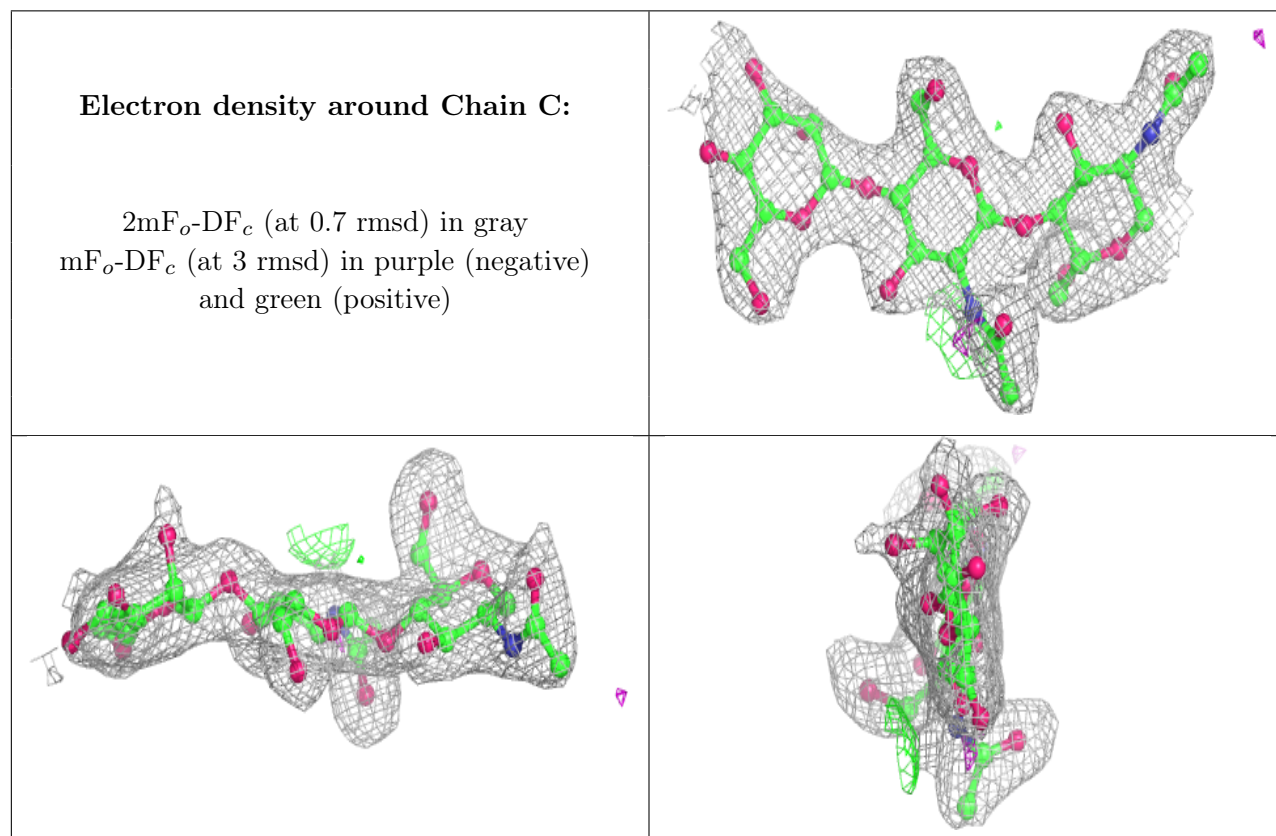
There are no non-standard protein/DNA/RNA residues in this entry.

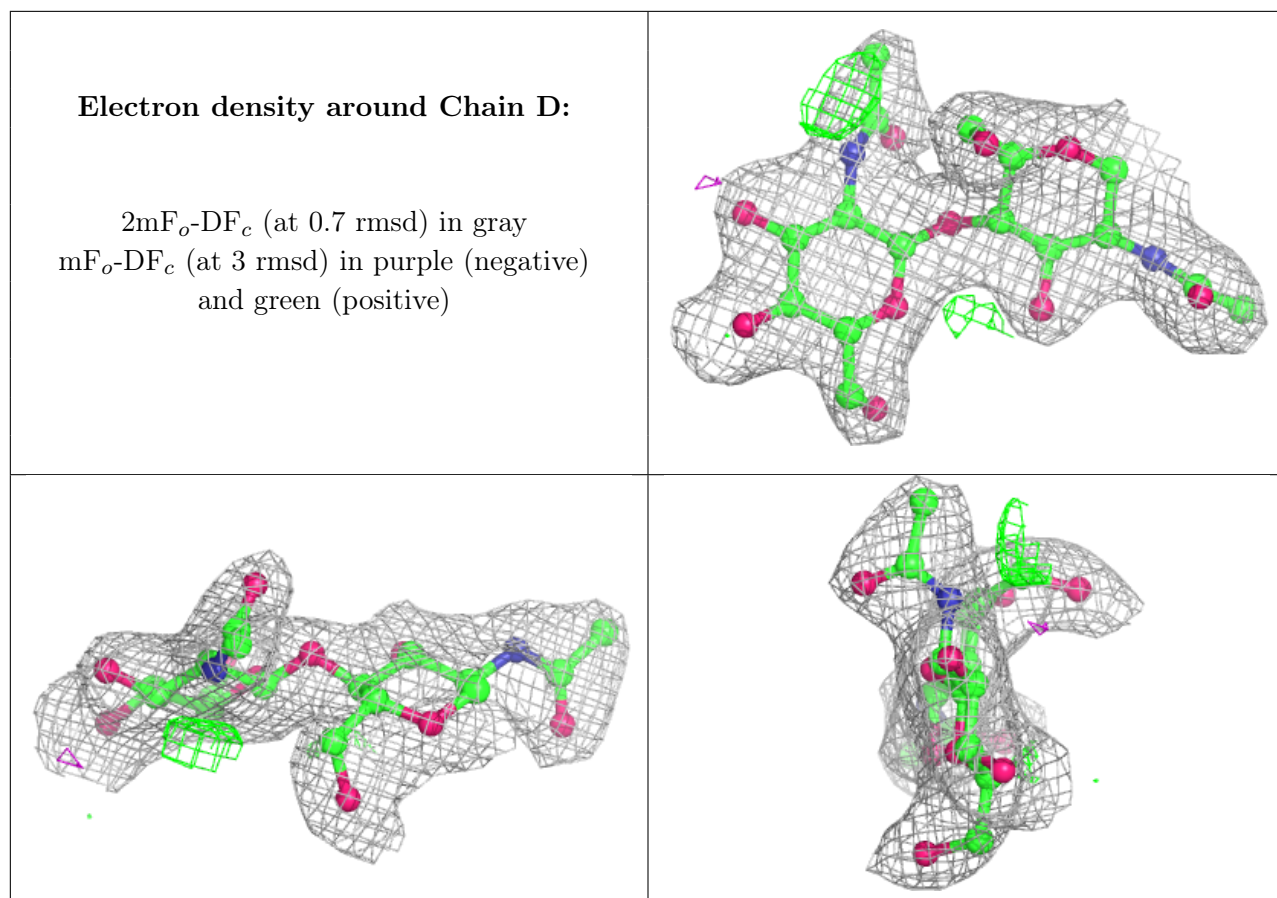
### 6.3 Carbohydrates [i](#)

In the following table, the Atoms column lists the number of modelled atoms in the group and the number defined in the chemical component dictionary. The B-factors column lists the minimum, median, 95<sup>th</sup> percentile and maximum values of B factors of atoms in the group. The column labelled 'Q < 0.9' lists the number of atoms with occupancy less than 0.9.

Mol	Type	Chain	Res	Atoms	RSCC	RSR	B-factors(Å <sup>2</sup> )	Q<0.9
2	BMA	C	3	11/12	0.90	0.14	50,55,68,69	0
3	NAG	D	2	14/15	0.93	0.12	19,24,34,37	0
2	NAG	C	2	14/15	0.94	0.11	22,33,36,41	0
3	NAG	D	1	14/15	0.96	0.11	13,19,22,26	0
2	NAG	C	1	14/15	0.96	0.13	13,18,21,22	0

The following is a graphical depiction of the model fit to experimental electron density for oligosaccharide. Each fit is shown from different orientation to approximate a three-dimensional view.





## 6.4 Ligands [i](#)

In the following table, the Atoms column lists the number of modelled atoms in the group and the number defined in the chemical component dictionary. The B-factors column lists the minimum, median, 95<sup>th</sup> percentile and maximum values of B factors of atoms in the group. The column labelled 'Q < 0.9' lists the number of atoms with occupancy less than 0.9.

Mol	Type	Chain	Res	Atoms	RSCC	RSR	B-factors(Å <sup>2</sup> )	Q < 0.9
8	IOD	B	914	1/1	0.62	0.11	137,137,137,137	0
8	IOD	A	925	1/1	0.66	0.08	136,136,136,136	0
7	ZN	A	908	1/1	0.67	0.15	24,24,24,24	1
8	IOD	B	920	1/1	0.77	0.09	109,109,109,109	0
8	IOD	A	919	1/1	0.82	0.06	102,102,102,102	0
8	IOD	A	913	1/1	0.83	0.18	133,133,133,133	0
8	IOD	A	922	1/1	0.88	0.09	110,110,110,110	0
8	IOD	A	920	1/1	0.88	0.05	106,106,106,106	0
7	ZN	B	904	1/1	0.89	0.06	58,58,58,58	0
6	GOL	A	906	6/6	0.89	0.18	33,36,37,41	0
8	IOD	B	909	1/1	0.90	0.08	113,113,113,113	0
8	IOD	A	911	1/1	0.91	0.07	98,98,98,98	0
6	GOL	A	905	6/6	0.91	0.17	27,28,30,32	0

*Continued on next page...*

*Continued from previous page...*

Mol	Type	Chain	Res	Atoms	RSCC	RSR	B-factors( $\text{\AA}^2$ )	Q<0.9
6	GOL	B	903	6/6	0.91	0.19	14,14,16,22	0
7	ZN	B	905	1/1	0.92	0.19	25,25,25,25	1
6	GOL	A	904	6/6	0.93	0.12	35,39,42,53	0
4	5JK	A	901	29/29	0.93	0.13	13,14,30,33	0
5	T8R	A	902	27/27	0.93	0.12	19,30,34,36	0
6	GOL	A	903	6/6	0.93	0.18	14,14,24,32	0
8	IOD	B	913	1/1	0.94	0.19	99,99,99,99	0
5	T8R	B	902	27/27	0.94	0.17	25,31,45,55	0
8	IOD	B	915	1/1	0.94	0.04	88,88,88,88	0
4	5JK	B	901	29/29	0.94	0.13	14,14,28,34	0
8	IOD	A	924	1/1	0.95	0.04	104,104,104,104	0
8	IOD	B	912	1/1	0.95	0.05	126,126,126,126	0
8	IOD	A	923	1/1	0.96	0.07	116,116,116,116	0
8	IOD	A	915	1/1	0.96	0.14	97,97,97,97	0
8	IOD	A	921	1/1	0.96	0.03	101,101,101,101	0
8	IOD	A	929	1/1	0.96	0.10	88,88,88,88	0
7	ZN	A	907	1/1	0.96	0.05	61,61,61,61	0
8	IOD	A	910	1/1	0.97	0.03	103,103,103,103	0
8	IOD	A	918	1/1	0.97	0.03	111,111,111,111	0
8	IOD	B	911	1/1	0.97	0.06	88,88,88,88	0
8	IOD	B	918	1/1	0.97	0.05	45,45,45,45	0
8	IOD	A	914	1/1	0.97	0.03	110,110,110,110	0
8	IOD	A	927	1/1	0.98	0.04	47,47,47,47	0
8	IOD	A	917	1/1	0.98	0.04	83,83,83,83	0
8	IOD	B	907	1/1	0.98	0.07	89,89,89,89	0
8	IOD	B	908	1/1	0.98	0.03	77,77,77,77	0
8	IOD	B	921	1/1	0.98	0.06	100,100,100,100	0
9	CA	A	930	1/1	0.98	0.09	15,15,15,15	0
9	CA	B	922	1/1	0.98	0.10	16,16,16,16	0
8	IOD	B	916	1/1	0.99	0.04	68,68,68,68	0
8	IOD	B	906	1/1	0.99	0.03	84,84,84,84	0
8	IOD	B	919	1/1	0.99	0.04	53,53,53,53	0
8	IOD	A	909	1/1	0.99	0.03	92,92,92,92	0
8	IOD	A	928	1/1	0.99	0.03	55,55,55,55	0
8	IOD	A	912	1/1	0.99	0.04	94,94,94,94	0
8	IOD	B	910	1/1	0.99	0.03	98,98,98,98	0
8	IOD	A	916	1/1	1.00	0.07	48,48,48,48	0
8	IOD	A	926	1/1	1.00	0.09	25,25,25,25	0
8	IOD	B	917	1/1	1.00	0.08	25,25,25,25	0

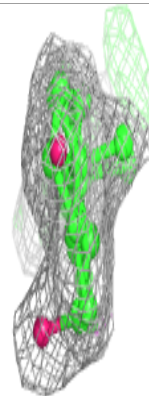
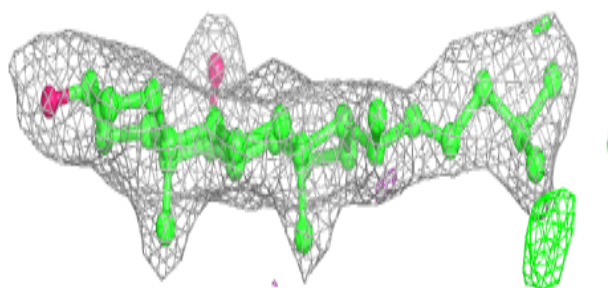
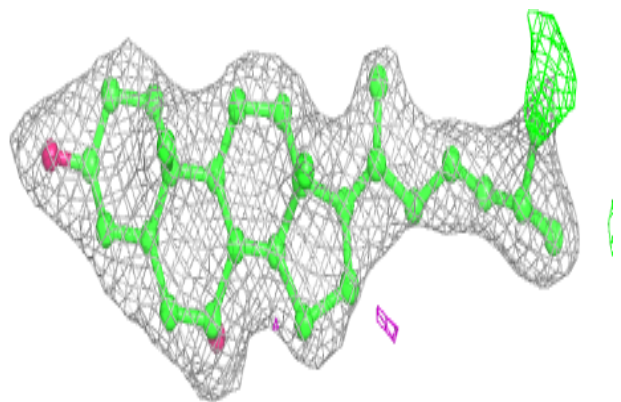
The following is a graphical depiction of the model fit to experimental electron density of all instances of the Ligand of Interest. In addition, ligands with molecular weight > 250 and outliers as shown on the geometry validation Tables will also be included. Each fit is shown from different



orientation to approximate a three-dimensional view.

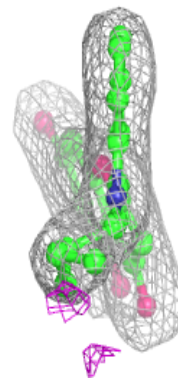
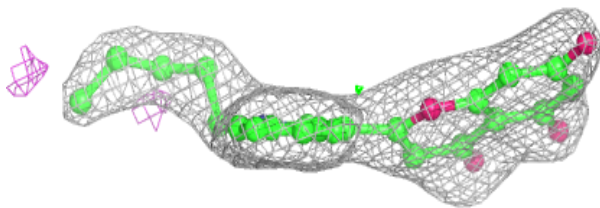
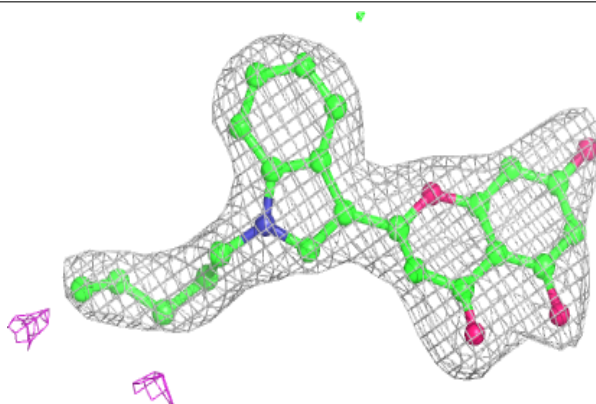
**Electron density around 5JK A 901:**

$2mF_o-DF_c$  (at 0.7 rmsd) in gray  
 $mF_o-DF_c$  (at 3 rmsd) in purple (negative)  
and green (positive)



**Electron density around T8R A 902:**

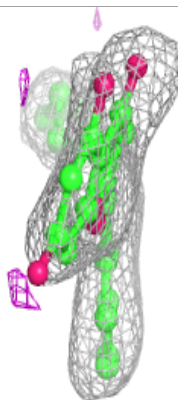
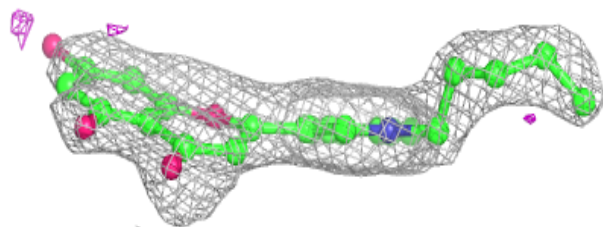
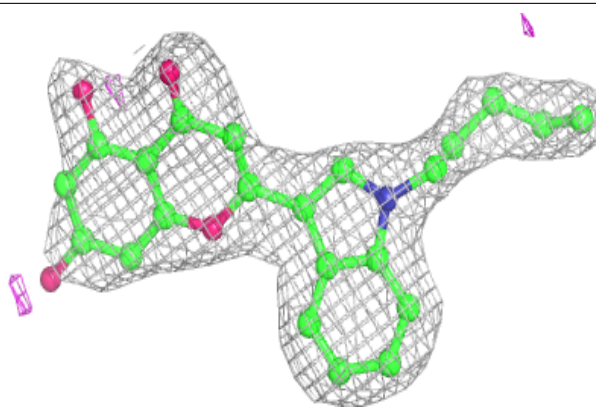
$2mF_o-DF_c$  (at 0.7 rmsd) in gray  
 $mF_o-DF_c$  (at 3 rmsd) in purple (negative)  
and green (positive)



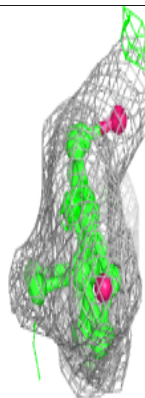
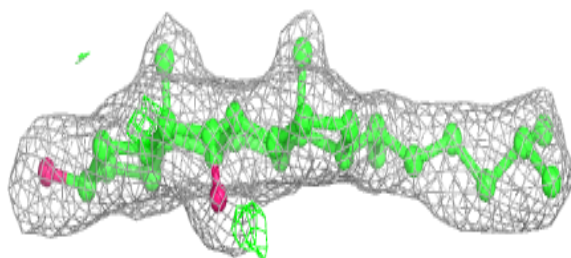
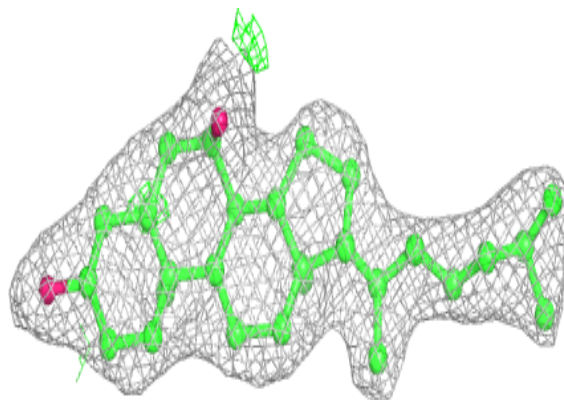


**Electron density around T8R B 902:**

$2mF_o-DF_c$  (at 0.7 rmsd) in gray  
 $mF_o-DF_c$  (at 3 rmsd) in purple (negative)  
and green (positive)

**Electron density around 5JK B 901:**

$2mF_o-DF_c$  (at 0.7 rmsd) in gray  
 $mF_o-DF_c$  (at 3 rmsd) in purple (negative)  
and green (positive)



## 6.5 Other polymers [i](#)

There are no such residues in this entry.