



## wwPDB EM Validation Summary Report ⓘ

Nov 7, 2022 – 03:12 AM EST

PDB ID : 6C3P  
EMDB ID : EMD-7339  
Title : Cryo-EM structure of human KATP bound to ATP and ADP in propeller form  
Authors : Lee, K.P.K.; Chen, J.; MacKinnon, R.  
Deposited on : 2018-01-10  
Resolution : 5.60 Å (reported)

This is a wwPDB EM Validation Summary Report for a publicly released PDB entry.

We welcome your comments at [validation@mail.wwpdb.org](mailto:validation@mail.wwpdb.org)

A user guide is available at

<https://www.wwpdb.org/validation/2017/EMValidationReportHelp>

with specific help available everywhere you see the ⓘ symbol.

The types of validation reports are described at

<http://www.wwpdb.org/validation/2017/FAQs#types>.

---

The following versions of software and data (see [references ⓘ](#)) were used in the production of this report:

EMDB validation analysis : 0.0.1.dev43  
Mogul : 1.8.5 (274361), CSD as541be (2020)  
MolProbity : 4.02b-467  
buster-report : 1.1.7 (2018)  
Percentile statistics : 20191225.v01 (using entries in the PDB archive December 25th 2019)  
MapQ : 1.9.9  
Ideal geometry (proteins) : Engh & Huber (2001)  
Ideal geometry (DNA, RNA) : Parkinson et al. (1996)  
Validation Pipeline (wwPDB-VP) : 2.31.2

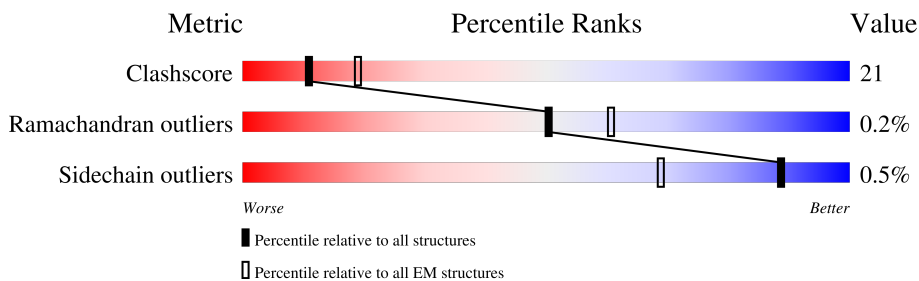
# 1 Overall quality at a glance

The following experimental techniques were used to determine the structure:

*ELECTRON MICROSCOPY*

The reported resolution of this entry is 5.60 Å.

Percentile scores (ranging between 0-100) for global validation metrics of the entry are shown in the following graphic. The table shows the number of entries on which the scores are based.



Metric	Whole archive (#Entries)	EM structures (#Entries)
Clashscore	158937	4297
Ramachandran outliers	154571	4023
Sidechain outliers	154315	3826

The table below summarises the geometric issues observed across the polymeric chains and their fit to the map. The red, orange, yellow and green segments of the bar indicate the fraction of residues that contain outliers for  $\geq 3$ , 2, 1 and 0 types of geometric quality criteria respectively. A grey segment represents the fraction of residues that are not modelled. The numeric value for each fraction is indicated below the corresponding segment, with a dot representing fractions  $\leq 5\%$ . The upper red bar (where present) indicates the fraction of residues that have poor fit to the EM map (all-atom inclusion  $< 40\%$ ). The numeric value is given above the bar.

Mol	Chain	Length	Quality of chain
1	A	406	
1	B	406	
1	C	406	
1	D	406	
2	E	1581	
2	F	1581	
2	G	1581	
2	H	1581	

## 2 Entry composition i

There are 5 unique types of molecules in this entry. The entry contains 50696 atoms, of which 0 are hydrogens and 0 are deuteriums.

In the tables below, the AltConf column contains the number of residues with at least one atom in alternate conformation and the Trace column contains the number of residues modelled with at most 2 atoms.

- Molecule 1 is a protein called ATP-sensitive inward rectifier potassium channel 11.

Mol	Chain	Residues	Atoms					AltConf	Trace
			Total	C	N	O	S		
1	A	328	2506	1619	428	442	17	0	0
1	D	328	2506	1619	428	442	17	0	0
1	B	328	2506	1619	428	442	17	0	0
1	C	328	2506	1619	428	442	17	0	0

There are 64 discrepancies between the modelled and reference sequences:

Chain	Residue	Modelled	Actual	Comment	Reference
A	-5	SER	-	expression tag	UNP Q14654
A	-4	ALA	-	expression tag	UNP Q14654
A	-3	SER	-	expression tag	UNP Q14654
A	-2	ALA	-	expression tag	UNP Q14654
A	-1	SER	-	expression tag	UNP Q14654
A	0	ALA	-	expression tag	UNP Q14654
A	391	SER	-	expression tag	UNP Q14654
A	392	ASN	-	expression tag	UNP Q14654
A	393	SER	-	expression tag	UNP Q14654
A	394	LEU	-	expression tag	UNP Q14654
A	395	GLU	-	expression tag	UNP Q14654
A	396	VAL	-	expression tag	UNP Q14654
A	397	LEU	-	expression tag	UNP Q14654
A	398	PHE	-	expression tag	UNP Q14654
A	399	GLN	-	expression tag	UNP Q14654
A	400	GLY	-	expression tag	UNP Q14654
D	-5	SER	-	expression tag	UNP Q14654
D	-4	ALA	-	expression tag	UNP Q14654
D	-3	SER	-	expression tag	UNP Q14654
D	-2	ALA	-	expression tag	UNP Q14654
D	-1	SER	-	expression tag	UNP Q14654
D	0	ALA	-	expression tag	UNP Q14654

*Continued on next page...*

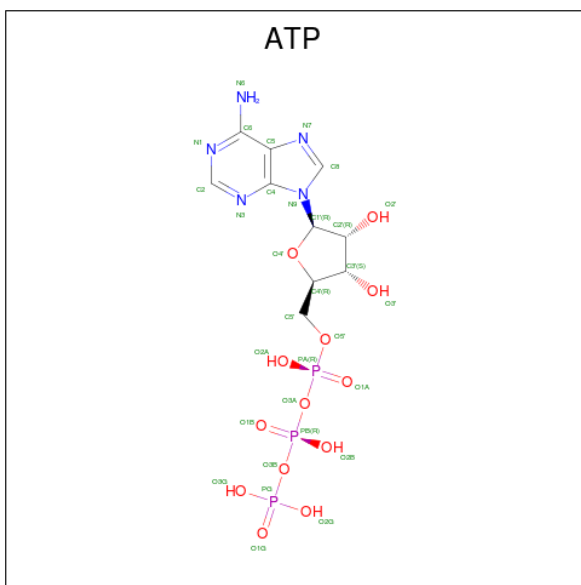
*Continued from previous page...*

Chain	Residue	Modelled	Actual	Comment	Reference
D	391	SER	-	expression tag	UNP Q14654
D	392	ASN	-	expression tag	UNP Q14654
D	393	SER	-	expression tag	UNP Q14654
D	394	LEU	-	expression tag	UNP Q14654
D	395	GLU	-	expression tag	UNP Q14654
D	396	VAL	-	expression tag	UNP Q14654
D	397	LEU	-	expression tag	UNP Q14654
D	398	PHE	-	expression tag	UNP Q14654
D	399	GLN	-	expression tag	UNP Q14654
D	400	GLY	-	expression tag	UNP Q14654
B	-5	SER	-	expression tag	UNP Q14654
B	-4	ALA	-	expression tag	UNP Q14654
B	-3	SER	-	expression tag	UNP Q14654
B	-2	ALA	-	expression tag	UNP Q14654
B	-1	SER	-	expression tag	UNP Q14654
B	0	ALA	-	expression tag	UNP Q14654
B	391	SER	-	expression tag	UNP Q14654
B	392	ASN	-	expression tag	UNP Q14654
B	393	SER	-	expression tag	UNP Q14654
B	394	LEU	-	expression tag	UNP Q14654
B	395	GLU	-	expression tag	UNP Q14654
B	396	VAL	-	expression tag	UNP Q14654
B	397	LEU	-	expression tag	UNP Q14654
B	398	PHE	-	expression tag	UNP Q14654
B	399	GLN	-	expression tag	UNP Q14654
B	400	GLY	-	expression tag	UNP Q14654
C	-5	SER	-	expression tag	UNP Q14654
C	-4	ALA	-	expression tag	UNP Q14654
C	-3	SER	-	expression tag	UNP Q14654
C	-2	ALA	-	expression tag	UNP Q14654
C	-1	SER	-	expression tag	UNP Q14654
C	0	ALA	-	expression tag	UNP Q14654
C	391	SER	-	expression tag	UNP Q14654
C	392	ASN	-	expression tag	UNP Q14654
C	393	SER	-	expression tag	UNP Q14654
C	394	LEU	-	expression tag	UNP Q14654
C	395	GLU	-	expression tag	UNP Q14654
C	396	VAL	-	expression tag	UNP Q14654
C	397	LEU	-	expression tag	UNP Q14654
C	398	PHE	-	expression tag	UNP Q14654
C	399	GLN	-	expression tag	UNP Q14654
C	400	GLY	-	expression tag	UNP Q14654

- Molecule 2 is a protein called ATP-binding cassette sub-family C member 8.

Mol	Chain	Residues	Atoms					AltConf	Trace
			Total	C	N	O	S		
2	E	1359	Total 10077	C 6567	N 1699	O 1760	S 51	0	0
2	H	1359	Total 10077	C 6567	N 1699	O 1760	S 51	0	0
2	G	1359	Total 10077	C 6567	N 1699	O 1760	S 51	0	0
2	F	1359	Total 10077	C 6567	N 1699	O 1760	S 51	0	0

- Molecule 3 is ADENOSINE-5'-TRIPHOSPHATE (three-letter code: ATP) (formula:  $C_{10}H_{16}N_5O_{13}P_3$ ).



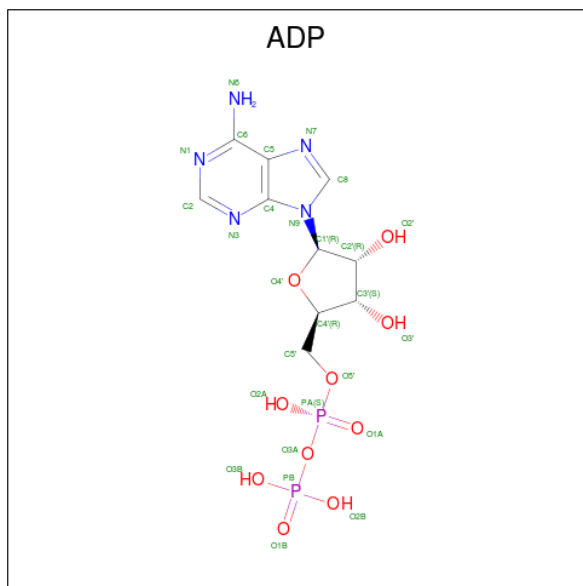
Mol	Chain	Residues	Atoms					AltConf
			Total	C	N	O	P	
3	A	1	Total 62	C 20	N 10	O 26	P 6	0
3	A	1	Total 62	C 20	N 10	O 26	P 6	0
3	D	1	Total 31	C 10	N 5	O 13	P 3	0
3	C	1	Total 31	C 10	N 5	O 13	P 3	0
3	E	1	Total 31	C 10	N 5	O 13	P 3	0
3	H	1	Total 31	C 10	N 5	O 13	P 3	0

*Continued on next page...*

Continued from previous page...

Mol	Chain	Residues	Atoms					AltConf
			Total	C	N	O	P	
3	G	1	Total	C	N	O	P	0
			31	10	5	13	3	
3	F	1	Total	C	N	O	P	0
			31	10	5	13	3	

- Molecule 4 is ADENOSINE-5'-DIPHOSPHATE (three-letter code: ADP) (formula:  $C_{10}H_{15}N_5O_{10}P_2$ ).

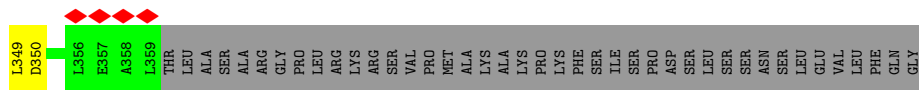


*Continued from previous page...*

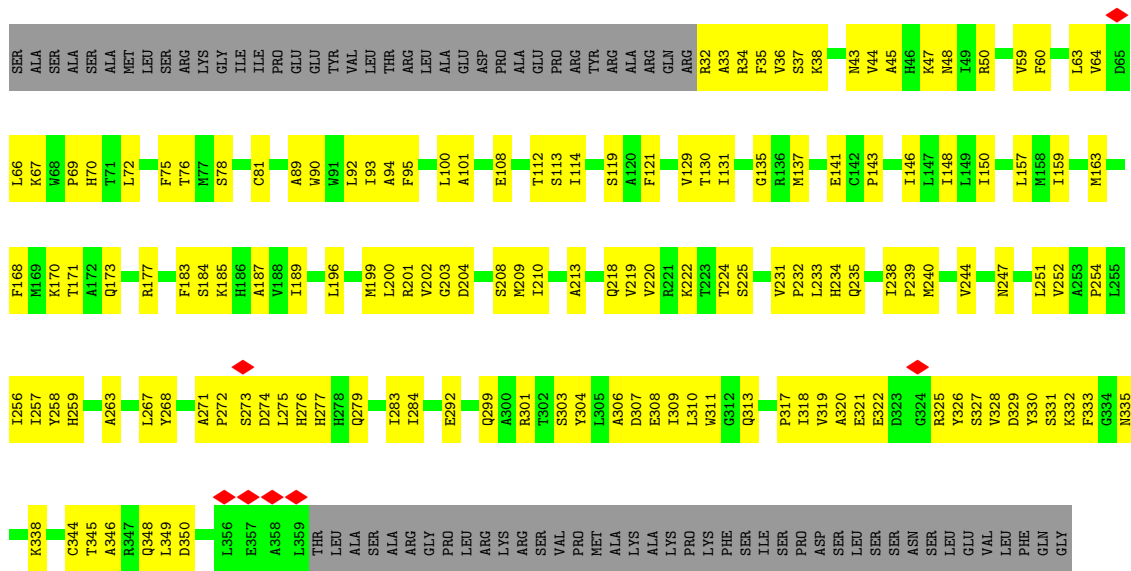
Mol	Chain	Residues	Atoms		AltConf
			Total	Mg	
5	F	2	2	2	0



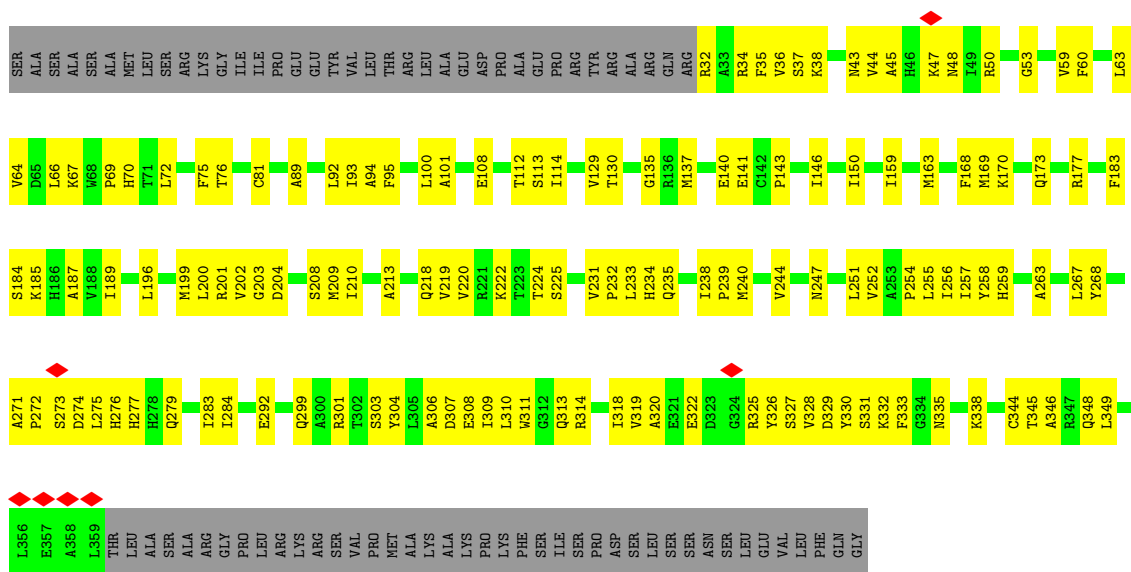




• Molecule 1: ATP-sensitive inward rectifier potassium channel 11

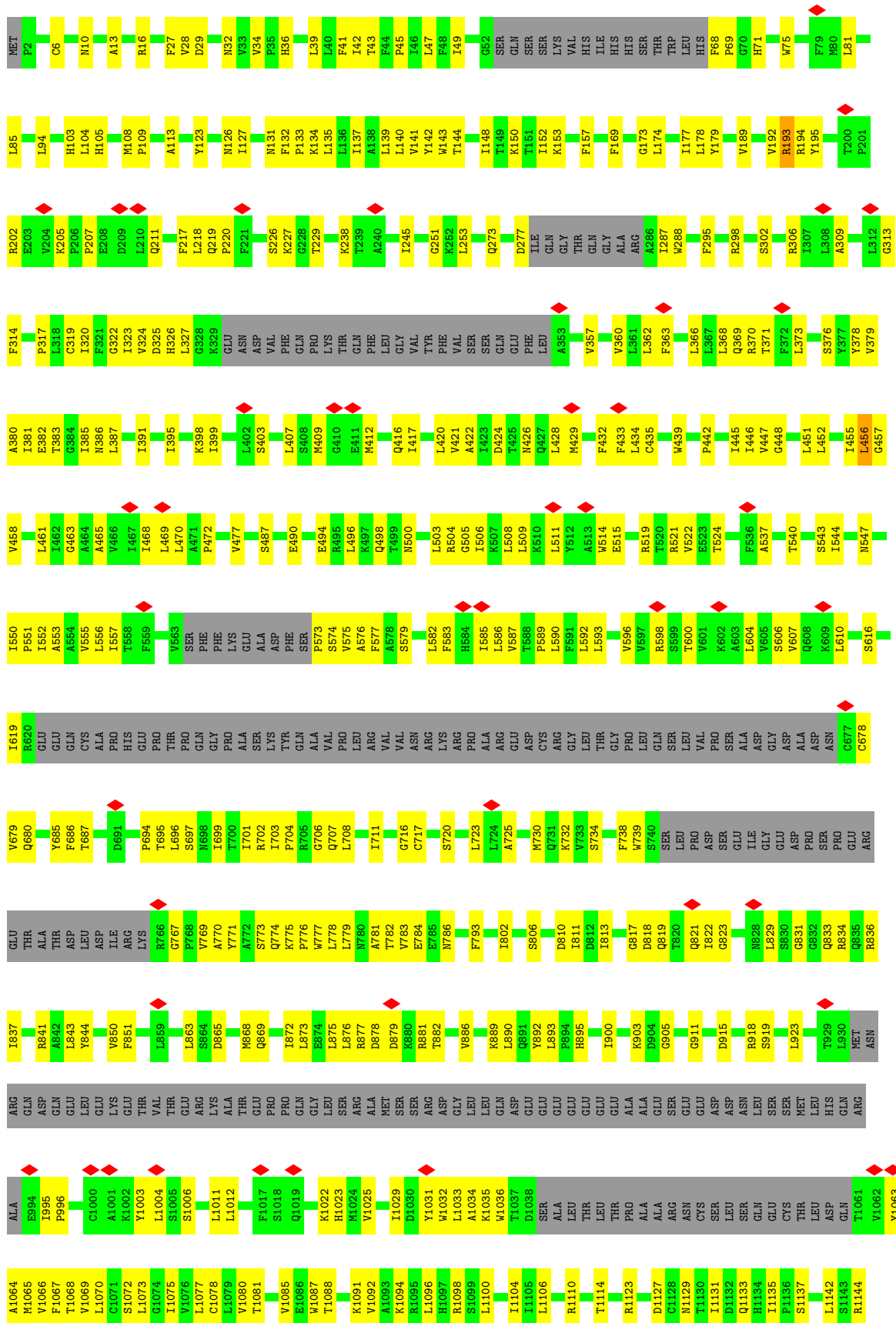


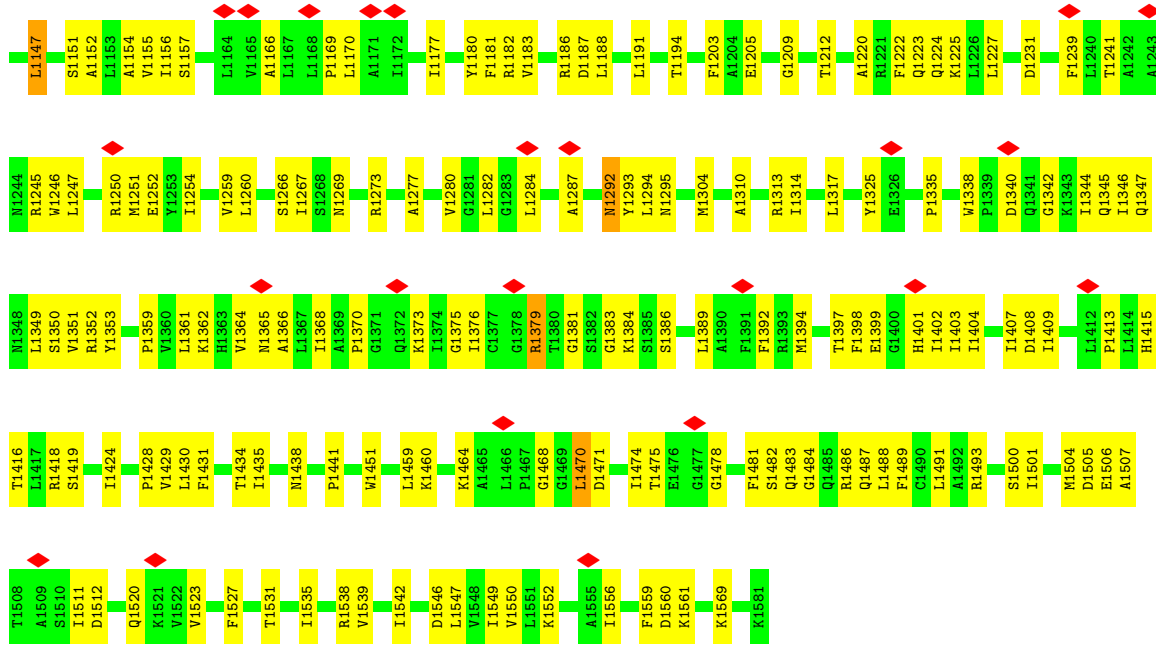
• Molecule 1: ATP-sensitive inward rectifier potassium channel 11



• Molecule 2: ATP-binding cassette sub-family C member 8

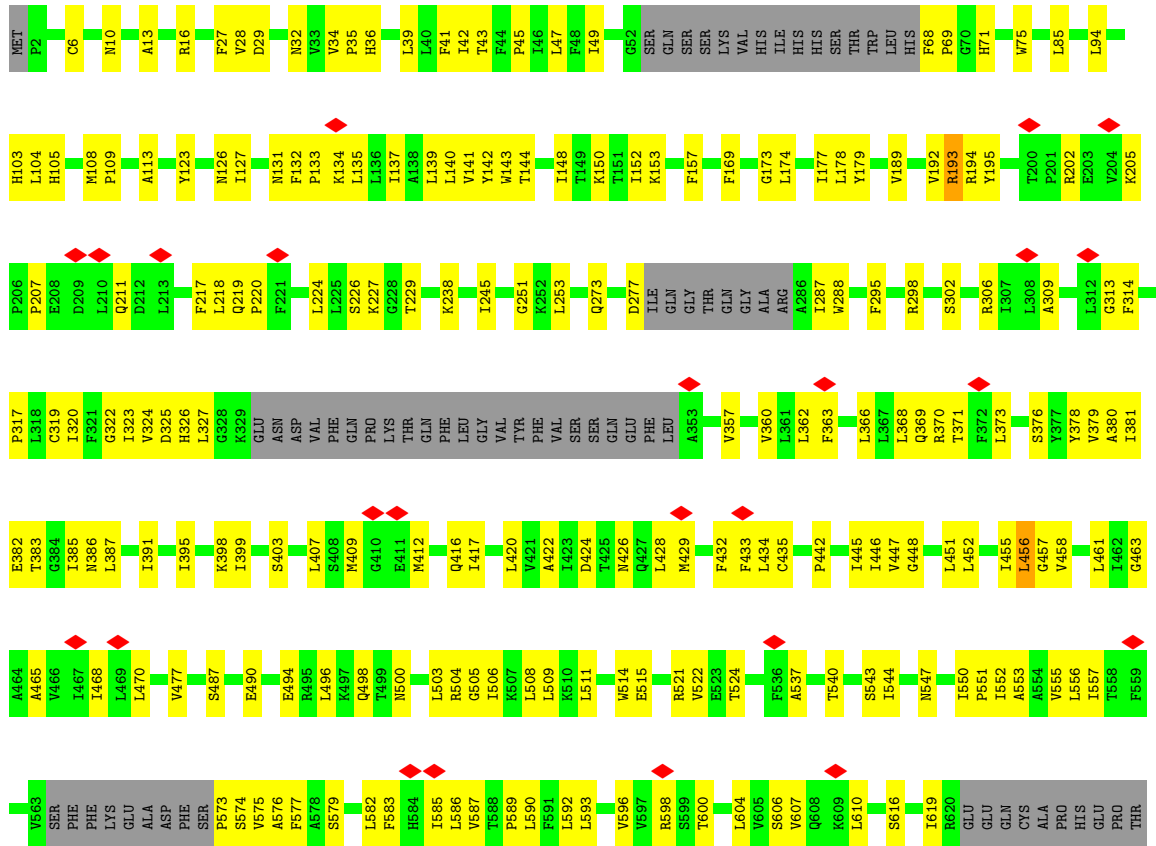


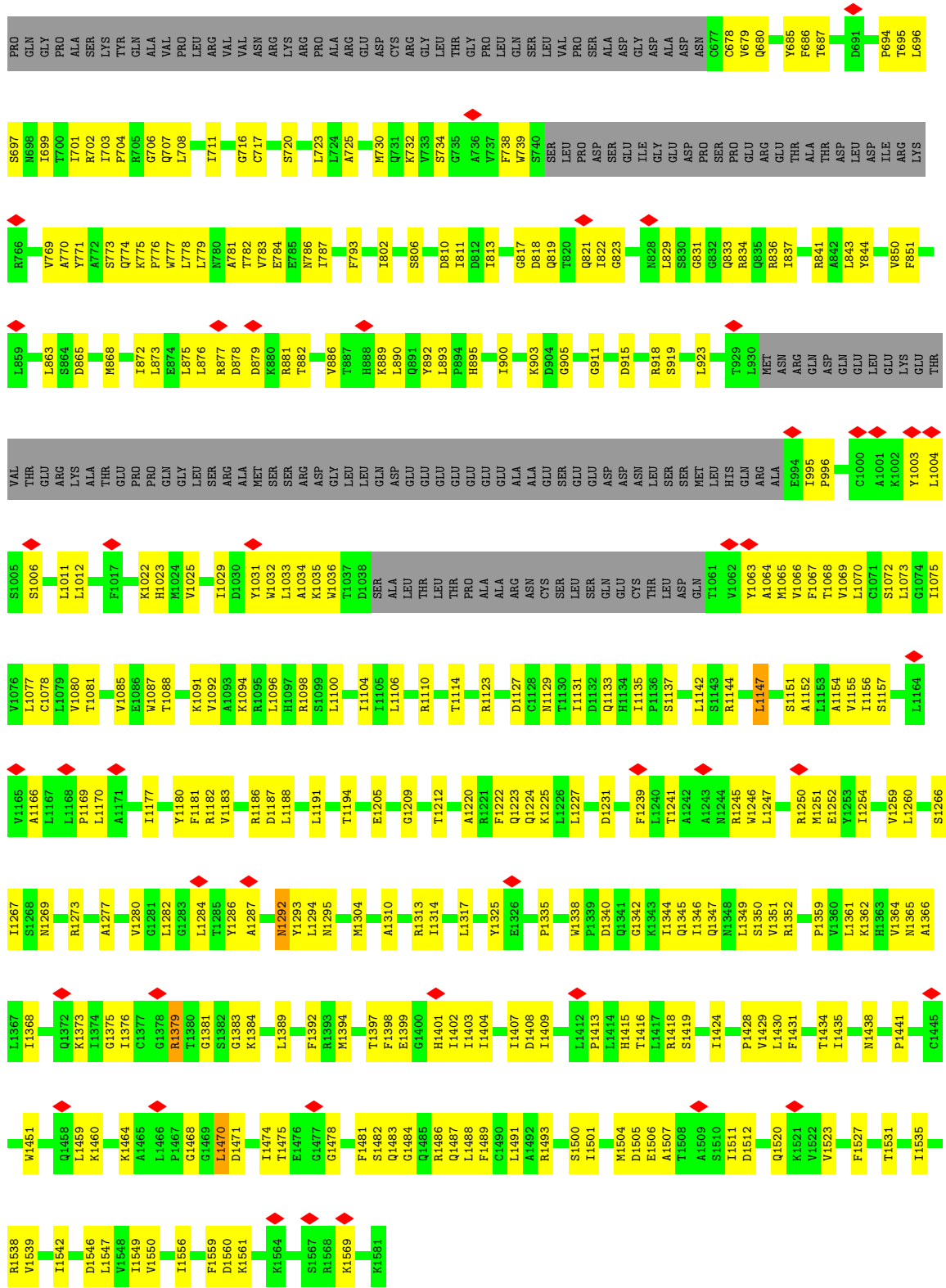




● Molecule 2: ATP-binding cassette sub-family C member 8

Chain H: 53% 32% 14%

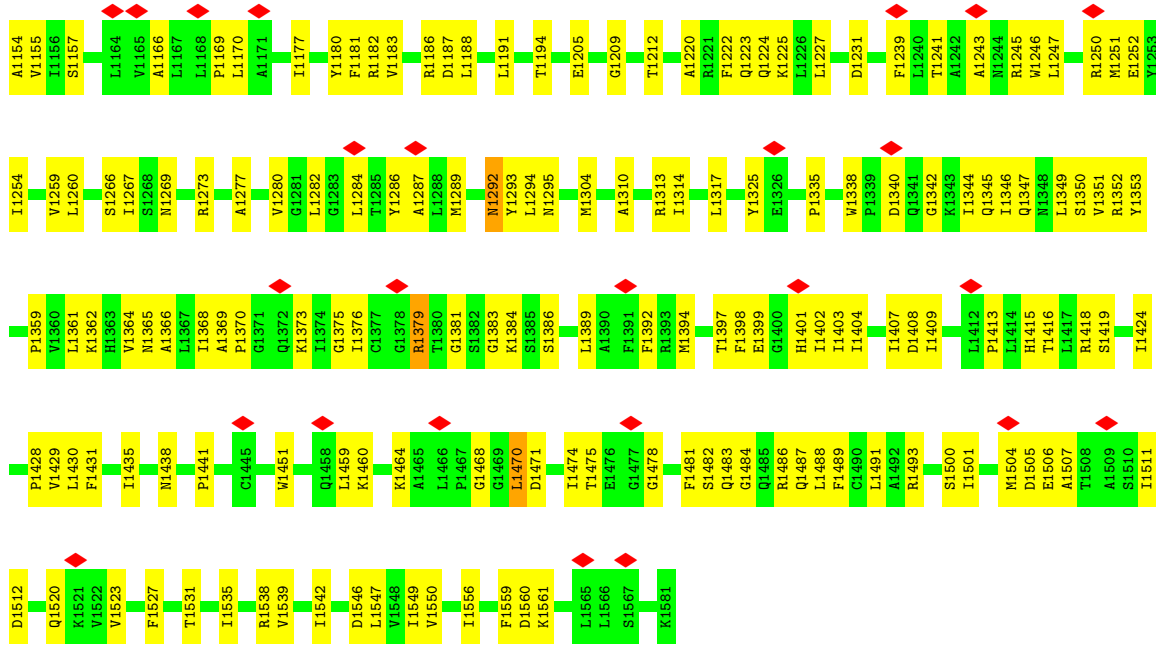




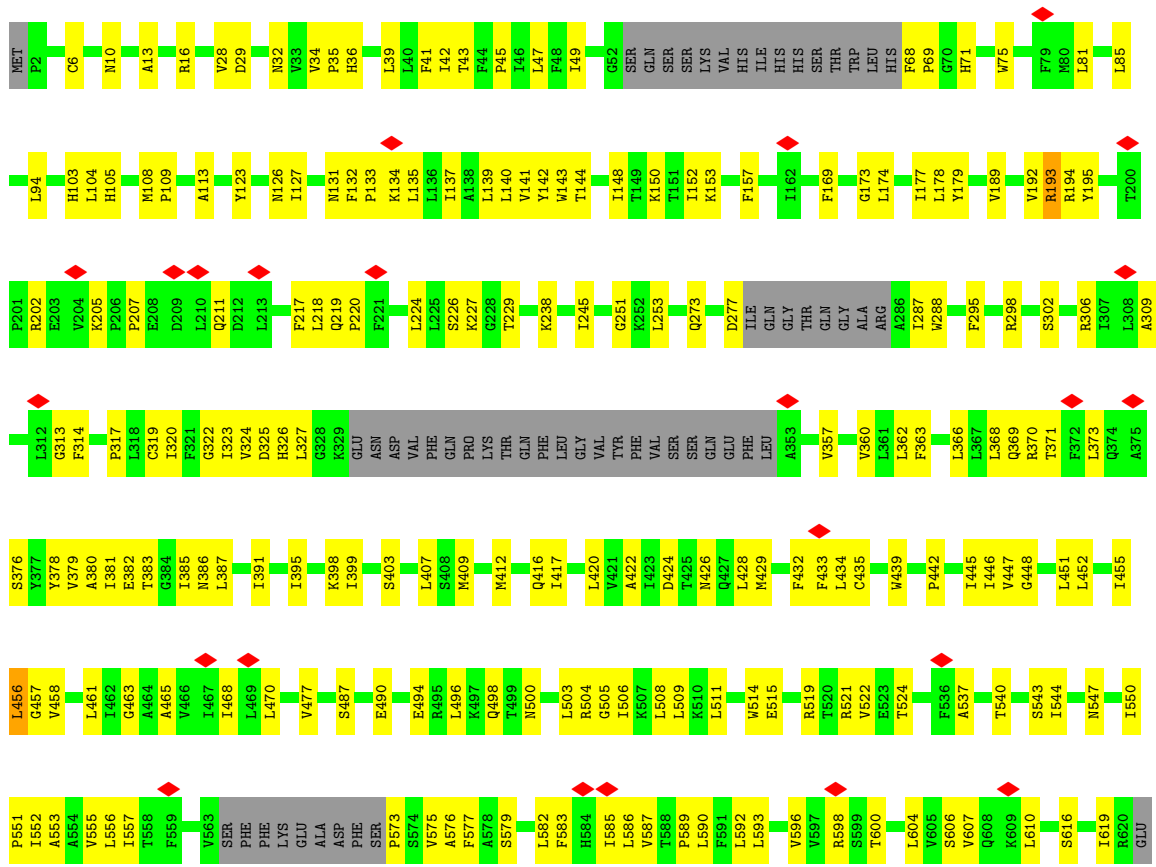
• Molecule 2: ATP-binding cassette sub-family C member 8







● Molecule 2: ATP-binding cassette sub-family C member 8





## 4 Experimental information

Property	Value	Source
EM reconstruction method	SINGLE PARTICLE	Depositor
Imposed symmetry	POINT, Not provided	
Number of particles used	47282	Depositor
Resolution determination method	FSC 0.143 CUT-OFF	Depositor
CTF correction method	PHASE FLIPPING AND AMPLITUDE CORRECTION	Depositor
Microscope	FEI TITAN KRIOS	Depositor
Voltage (kV)	300	Depositor
Electron dose ( $e^-/\text{\AA}^2$ )	1.18	Depositor
Minimum defocus (nm)	Not provided	
Maximum defocus (nm)	Not provided	
Magnification	Not provided	
Image detector	GATAN K2 SUMMIT (4k x 4k)	Depositor
Maximum map value	1.014	Depositor
Minimum map value	-0.760	Depositor
Average map value	0.000	Depositor
Map value standard deviation	0.011	Depositor
Recommended contour level	0.0343	Depositor
Map size (Å)	390.0, 390.0, 390.0	wwPDB
Map dimensions	300, 300, 300	wwPDB
Map angles (°)	90.0, 90.0, 90.0	wwPDB
Pixel spacing (Å)	1.3, 1.3, 1.3	Depositor



## 5 Model quality [i](#)

### 5.1 Standard geometry [i](#)

Bond lengths and bond angles in the following residue types are not validated in this section: ADP, ATP, MG

The Z score for a bond length (or angle) is the number of standard deviations the observed value is removed from the expected value. A bond length (or angle) with  $|Z| > 5$  is considered an outlier worth inspection. RMSZ is the root-mean-square of all Z scores of the bond lengths (or angles).

Mol	Chain	Bond lengths		Bond angles	
		RMSZ	# Z  >5	RMSZ	# Z  >5
1	A	0.36	0/2563	0.51	0/3490
1	B	0.36	0/2563	0.51	0/3490
1	C	0.36	0/2563	0.51	0/3490
1	D	0.36	0/2563	0.51	0/3490
2	E	0.32	0/10282	0.50	2/14031 (0.0%)
2	F	0.32	0/10282	0.50	2/14031 (0.0%)
2	G	0.32	0/10282	0.50	2/14031 (0.0%)
2	H	0.32	0/10282	0.50	2/14031 (0.0%)
All	All	0.33	0/51380	0.50	8/70084 (0.0%)

Chiral center outliers are detected by calculating the chiral volume of a chiral center and verifying if the center is modelled as a planar moiety or with the opposite hand. A planarity outlier is detected by checking planarity of atoms in a peptide group, atoms in a mainchain group or atoms of a sidechain that are expected to be planar.

Mol	Chain	#Chirality outliers	#Planarity outliers
2	E	0	2
2	F	0	2
2	G	0	2
2	H	0	2
All	All	0	8

There are no bond length outliers.

The worst 5 of 8 bond angle outliers are listed below:

Mol	Chain	Res	Type	Atoms	Z	Observed(°)	Ideal(°)
2	H	1294	LEU	CA-CB-CG	5.39	127.69	115.30
2	G	1294	LEU	CA-CB-CG	5.37	127.64	115.30
2	F	1294	LEU	CA-CB-CG	5.37	127.64	115.30
2	E	1294	LEU	CA-CB-CG	5.35	127.61	115.30

*Continued on next page...*

*Continued from previous page...*

Mol	Chain	Res	Type	Atoms	Z	Observed(°)	Ideal(°)
2	G	1470	LEU	CA-CB-CG	5.18	127.21	115.30

There are no chirality outliers.

5 of 8 planarity outliers are listed below:

Mol	Chain	Res	Type	Group
2	E	193	ARG	Peptide
2	E	202	ARG	Peptide
2	G	193	ARG	Peptide
2	H	193	ARG	Peptide
2	H	202	ARG	Peptide

## 5.2 Too-close contacts [i](#)

In the following table, the Non-H and H(model) columns list the number of non-hydrogen atoms and hydrogen atoms in the chain respectively. The H(added) column lists the number of hydrogen atoms added and optimized by MolProbity. The Clashes column lists the number of clashes within the asymmetric unit, whereas Symm-Clashes lists symmetry-related clashes.

Mol	Chain	Non-H	H(model)	H(added)	Clashes	Symm-Clashes
1	A	2506	0	2494	129	0
1	B	2506	0	2494	130	0
1	C	2506	0	2494	120	0
1	D	2506	0	2494	122	0
2	E	10077	0	9922	408	0
2	F	10077	0	9922	407	0
2	G	10077	0	9922	406	0
2	H	10077	0	9922	404	0
3	A	62	0	24	8	0
3	C	31	0	12	3	0
3	D	31	0	12	4	0
3	E	31	0	12	5	0
3	F	31	0	12	2	0
3	G	31	0	12	4	0
3	H	31	0	12	5	0
4	E	27	0	12	2	0
4	F	27	0	12	2	0
4	G	27	0	12	2	0
4	H	27	0	12	2	0
5	E	2	0	0	0	0
5	F	2	0	0	0	0

*Continued on next page...*

*Continued from previous page...*

Mol	Chain	Non-H	H(model)	H(added)	Clashes	Symm-Clashes
5	G	2	0	0	0	0
5	H	2	0	0	0	0
All	All	50696	0	49808	2070	0

The all-atom clashscore is defined as the number of clashes found per 1000 atoms (including hydrogen atoms). The all-atom clashscore for this structure is 21.

The worst 5 of 2070 close contacts within the same asymmetric unit are listed below, sorted by their clash magnitude.

Atom-1	Atom-2	Interatomic distance (Å)	Clash overlap (Å)
2:H:1501:ILE:HG22	2:H:1531:THR:HB	1.55	0.88
2:G:1501:ILE:HG22	2:G:1531:THR:HB	1.55	0.88
2:F:1501:ILE:HG22	2:F:1531:THR:HB	1.55	0.87
2:H:1459:LEU:HD21	2:H:1488:LEU:HB3	1.58	0.86
2:E:1501:ILE:HG22	2:E:1531:THR:HB	1.55	0.85

There are no symmetry-related clashes.

## 5.3 Torsion angles [i](#)

### 5.3.1 Protein backbone [i](#)

In the following table, the Percentiles column shows the percent Ramachandran outliers of the chain as a percentile score with respect to all PDB entries followed by that with respect to all EM entries.

The Analysed column shows the number of residues for which the backbone conformation was analysed, and the total number of residues.

Mol	Chain	Analysed	Favoured	Allowed	Outliers	Percentiles
1	A	326/406 (80%)	293 (90%)	32 (10%)	1 (0%)	41 76
1	B	326/406 (80%)	293 (90%)	32 (10%)	1 (0%)	41 76
1	C	326/406 (80%)	293 (90%)	32 (10%)	1 (0%)	41 76
1	D	326/406 (80%)	292 (90%)	33 (10%)	1 (0%)	41 76
2	E	1341/1581 (85%)	1242 (93%)	97 (7%)	2 (0%)	51 85
2	F	1341/1581 (85%)	1241 (92%)	98 (7%)	2 (0%)	51 85
2	G	1341/1581 (85%)	1240 (92%)	99 (7%)	2 (0%)	51 85
2	H	1341/1581 (85%)	1241 (92%)	98 (7%)	2 (0%)	51 85

*Continued on next page...*

Continued from previous page...

Mol	Chain	Analysed	Favoured	Allowed	Outliers	Percentiles
All	All	6668/7948 (84%)	6135 (92%)	521 (8%)	12 (0%)	50 81

5 of 12 Ramachandran outliers are listed below:

Mol	Chain	Res	Type
2	E	194	ARG
2	H	194	ARG
2	G	194	ARG
2	F	194	ARG
1	A	48	ASN

### 5.3.2 Protein sidechains [i](#)

In the following table, the Percentiles column shows the percent sidechain outliers of the chain as a percentile score with respect to all PDB entries followed by that with respect to all EM entries.

The Analysed column shows the number of residues for which the sidechain conformation was analysed, and the total number of residues.

Mol	Chain	Analysed	Rotameric	Outliers	Percentiles
1	A	265/348 (76%)	265 (100%)	0	100 100
1	B	265/348 (76%)	265 (100%)	0	100 100
1	C	265/348 (76%)	265 (100%)	0	100 100
1	D	265/348 (76%)	265 (100%)	0	100 100
2	E	1004/1368 (73%)	998 (99%)	6 (1%)	86 91
2	F	1004/1368 (73%)	998 (99%)	6 (1%)	86 91
2	G	1004/1368 (73%)	998 (99%)	6 (1%)	86 91
2	H	1004/1368 (73%)	998 (99%)	6 (1%)	86 91
All	All	5076/6864 (74%)	5052 (100%)	24 (0%)	89 93

5 of 24 residues with a non-rotameric sidechain are listed below:

Mol	Chain	Res	Type
2	G	1147	LEU
2	G	1379	ARG
2	G	1295	ASN
2	F	547	ASN
2	H	547	ASN

Sometimes sidechains can be flipped to improve hydrogen bonding and reduce clashes. 5 of 86 such sidechains are listed below:

Mol	Chain	Res	Type
2	G	103	HIS
2	F	36	HIS
2	G	188	ASN
2	G	1102	ASN
2	F	416	GLN

### 5.3.3 RNA [i](#)

There are no RNA molecules in this entry.

### 5.4 Non-standard residues in protein, DNA, RNA chains [i](#)

There are no non-standard protein/DNA/RNA residues in this entry.

### 5.5 Carbohydrates [i](#)

There are no monosaccharides in this entry.

### 5.6 Ligand geometry [i](#)

Of 20 ligands modelled in this entry, 8 are monoatomic - leaving 12 for Mogul analysis.

In the following table, the Counts columns list the number of bonds (or angles) for which Mogul statistics could be retrieved, the number of bonds (or angles) that are observed in the model and the number of bonds (or angles) that are defined in the Chemical Component Dictionary. The Link column lists molecule types, if any, to which the group is linked. The Z score for a bond length (or angle) is the number of standard deviations the observed value is removed from the expected value. A bond length (or angle) with  $|Z| > 2$  is considered an outlier worth inspection. RMSZ is the root-mean-square of all Z scores of the bond lengths (or angles).

Mol	Type	Chain	Res	Link	Bond lengths			Bond angles		
					Counts	RMSZ	# Z  > 2	Counts	RMSZ	# Z  > 2
3	ATP	A	502	-	26,33,33	0.91	1 (3%)	31,52,52	1.76	6 (19%)
3	ATP	C	501	-	26,33,33	0.93	1 (3%)	31,52,52	1.74	5 (16%)
4	ADP	F	2001	5	24,29,29	0.92	1 (4%)	29,45,45	1.49	4 (13%)
3	ATP	A	501	-	26,33,33	0.92	1 (3%)	31,52,52	1.73	5 (16%)
3	ATP	D	501	-	26,33,33	0.91	1 (3%)	31,52,52	1.74	5 (16%)
4	ADP	G	2001	5	24,29,29	0.92	1 (4%)	29,45,45	1.48	4 (13%)

Mol	Type	Chain	Res	Link	Bond lengths			Bond angles		
					Counts	RMSZ	# Z  > 2	Counts	RMSZ	# Z  > 2
3	ATP	H	2004	5	26,33,33	0.93	1 (3%)	31,52,52	1.67	6 (19%)
3	ATP	G	2004	5	26,33,33	0.92	1 (3%)	31,52,52	1.67	6 (19%)
4	ADP	H	2001	5	24,29,29	0.92	1 (4%)	29,45,45	1.48	4 (13%)
3	ATP	F	2004	5	26,33,33	0.94	1 (3%)	31,52,52	1.67	6 (19%)
4	ADP	E	2001	5	24,29,29	0.92	1 (4%)	29,45,45	1.48	4 (13%)
3	ATP	E	2004	5	26,33,33	0.92	1 (3%)	31,52,52	1.67	6 (19%)

In the following table, the Chirals column lists the number of chiral outliers, the number of chiral centers analysed, the number of these observed in the model and the number defined in the Chemical Component Dictionary. Similar counts are reported in the Torsion and Rings columns. '-' means no outliers of that kind were identified.

Mol	Type	Chain	Res	Link	Chirals	Torsions	Rings
3	ATP	A	502	-	-	4/18/38/38	0/3/3/3
3	ATP	C	501	-	-	4/18/38/38	0/3/3/3
4	ADP	F	2001	5	-	3/12/32/32	0/3/3/3
3	ATP	A	501	-	-	4/18/38/38	0/3/3/3
3	ATP	D	501	-	-	5/18/38/38	0/3/3/3
4	ADP	G	2001	5	-	3/12/32/32	0/3/3/3
3	ATP	H	2004	5	-	3/18/38/38	0/3/3/3
3	ATP	G	2004	5	-	3/18/38/38	0/3/3/3
4	ADP	H	2001	5	-	3/12/32/32	0/3/3/3
3	ATP	F	2004	5	-	3/18/38/38	0/3/3/3
4	ADP	E	2001	5	-	3/12/32/32	0/3/3/3
3	ATP	E	2004	5	-	3/18/38/38	0/3/3/3

The worst 5 of 12 bond length outliers are listed below:

Mol	Chain	Res	Type	Atoms	Z	Observed(Å)	Ideal(Å)
4	F	2001	ADP	C5-C4	2.43	1.47	1.40
3	C	501	ATP	C5-C4	2.40	1.47	1.40
4	H	2001	ADP	C5-C4	2.39	1.47	1.40
3	A	501	ATP	C5-C4	2.38	1.47	1.40
3	A	502	ATP	C5-C4	2.38	1.47	1.40

The worst 5 of 61 bond angle outliers are listed below:

Mol	Chain	Res	Type	Atoms	Z	Observed(°)	Ideal(°)
3	A	502	ATP	PA-O3A-PB	-4.68	116.77	132.83
3	D	501	ATP	PA-O3A-PB	-4.66	116.85	132.83
3	C	501	ATP	PA-O3A-PB	-4.59	117.08	132.83
3	A	501	ATP	PA-O3A-PB	-4.57	117.14	132.83
3	D	501	ATP	PB-O3B-PG	-4.23	118.31	132.83

There are no chirality outliers.

5 of 41 torsion outliers are listed below:

Mol	Chain	Res	Type	Atoms
3	A	501	ATP	C5'-O5'-PA-O1A
3	A	501	ATP	C5'-O5'-PA-O3A
3	A	502	ATP	C5'-O5'-PA-O3A
3	D	501	ATP	C5'-O5'-PA-O1A
3	C	501	ATP	C5'-O5'-PA-O1A

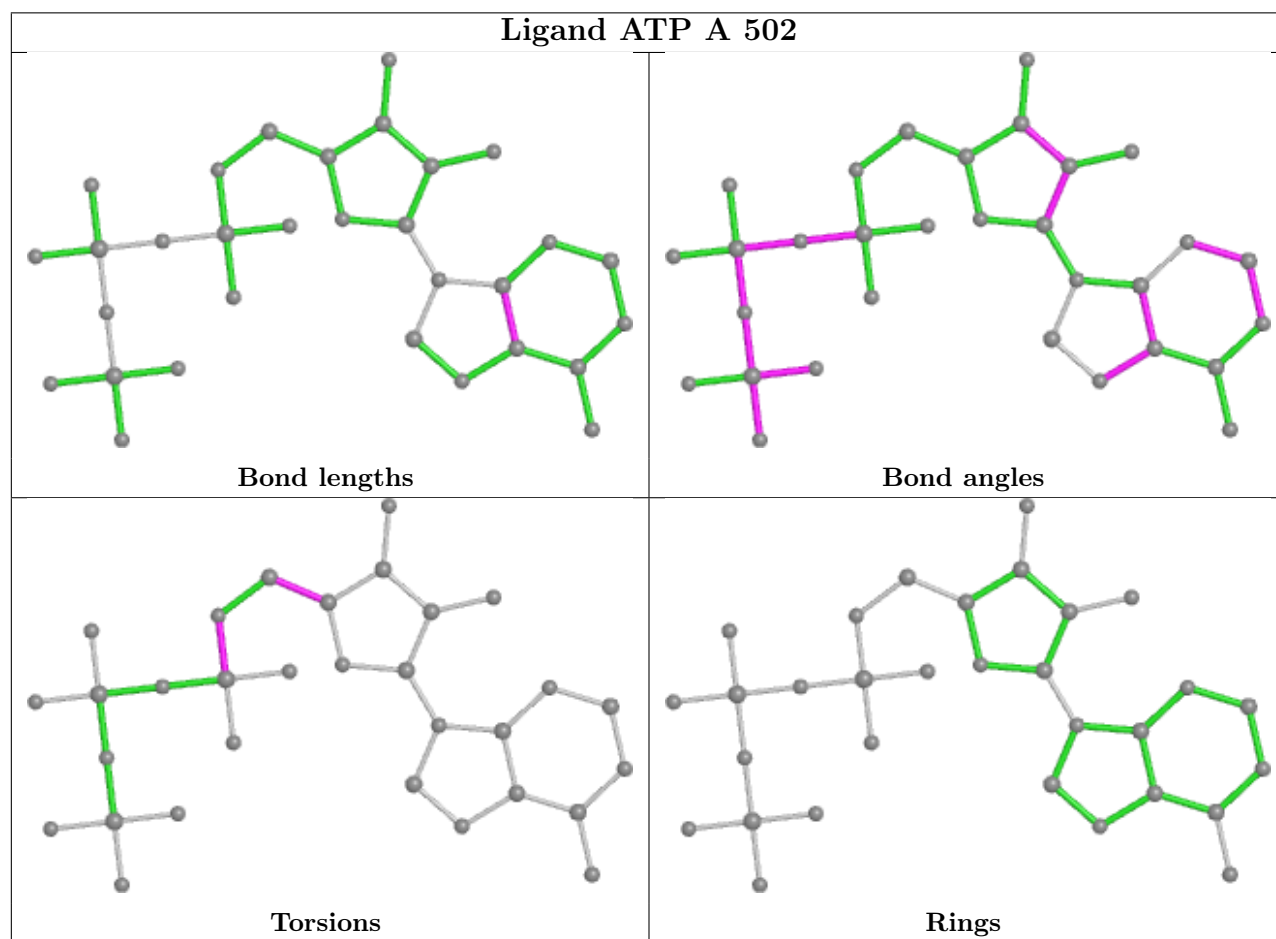
There are no ring outliers.

12 monomers are involved in 39 short contacts:

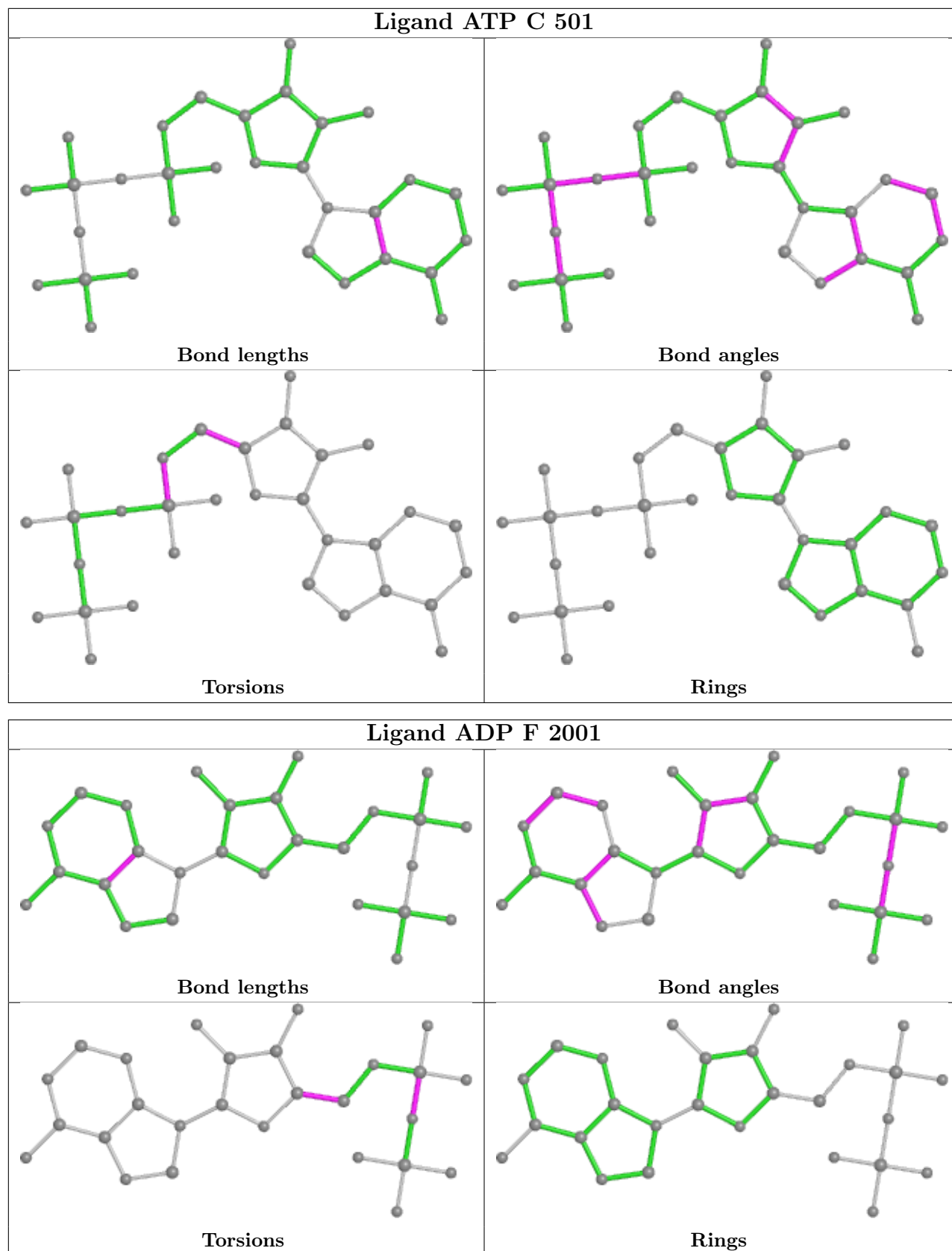
Mol	Chain	Res	Type	Clashes	Symm-Clashes
3	A	502	ATP	5	0
3	C	501	ATP	3	0
4	F	2001	ADP	2	0
3	A	501	ATP	3	0
3	D	501	ATP	4	0
4	G	2001	ADP	2	0
3	H	2004	ATP	5	0
3	G	2004	ATP	4	0
4	H	2001	ADP	2	0
3	F	2004	ATP	2	0
4	E	2001	ADP	2	0
3	E	2004	ATP	5	0

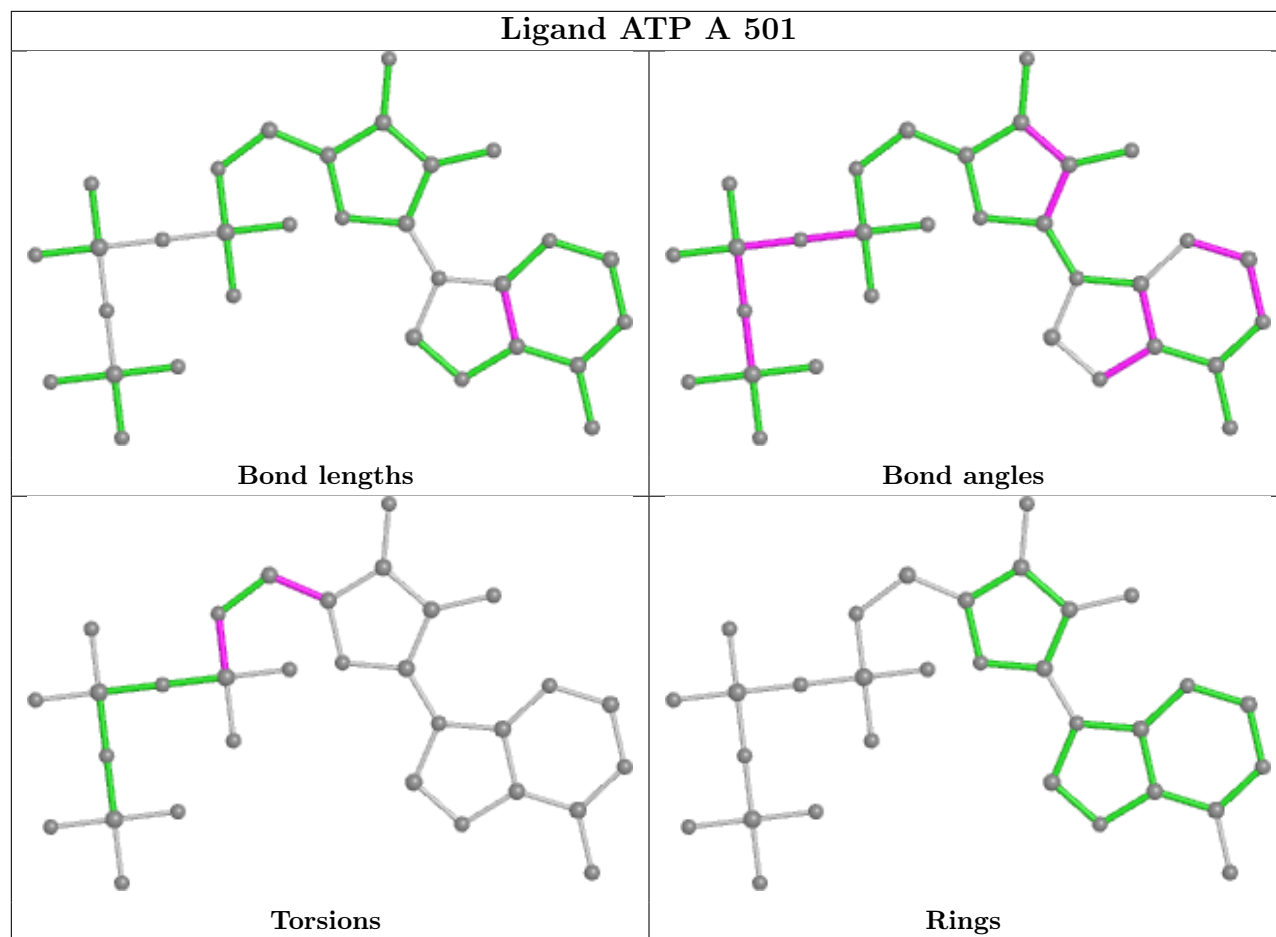
The following is a two-dimensional graphical depiction of Mogul quality analysis of bond lengths, bond angles, torsion angles, and ring geometry for all instances of the Ligand of Interest. In addition, ligands with molecular weight > 250 and outliers as shown on the validation Tables will also be included. For torsion angles, if less than 5% of the Mogul distribution of torsion angles is within 10 degrees of the torsion angle in question, then that torsion angle is considered an outlier. Any bond that is central to one or more torsion angles identified as an outlier by Mogul will be highlighted in the graph. For rings, the root-mean-square deviation (RMSD) between the ring in question and similar rings identified by Mogul is calculated over all ring torsion angles. If the average RMSD is greater than 60 degrees and the minimal RMSD between the ring in question and any Mogul-identified rings is also greater than 60 degrees, then that ring is considered an outlier.

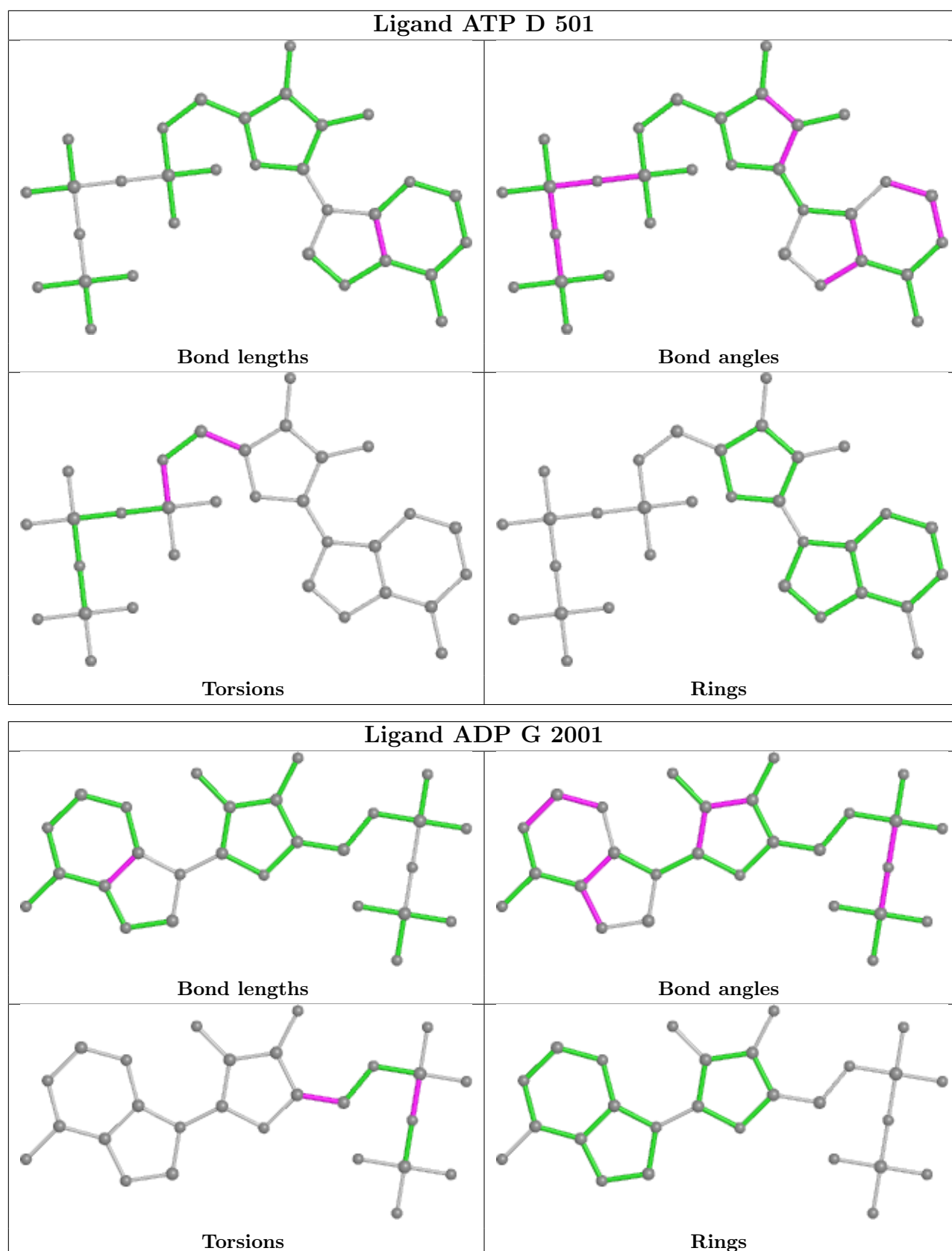
The outliers are highlighted in purple. The color gray indicates Mogul did not find sufficient equivalents in the CSD to analyse the geometry.

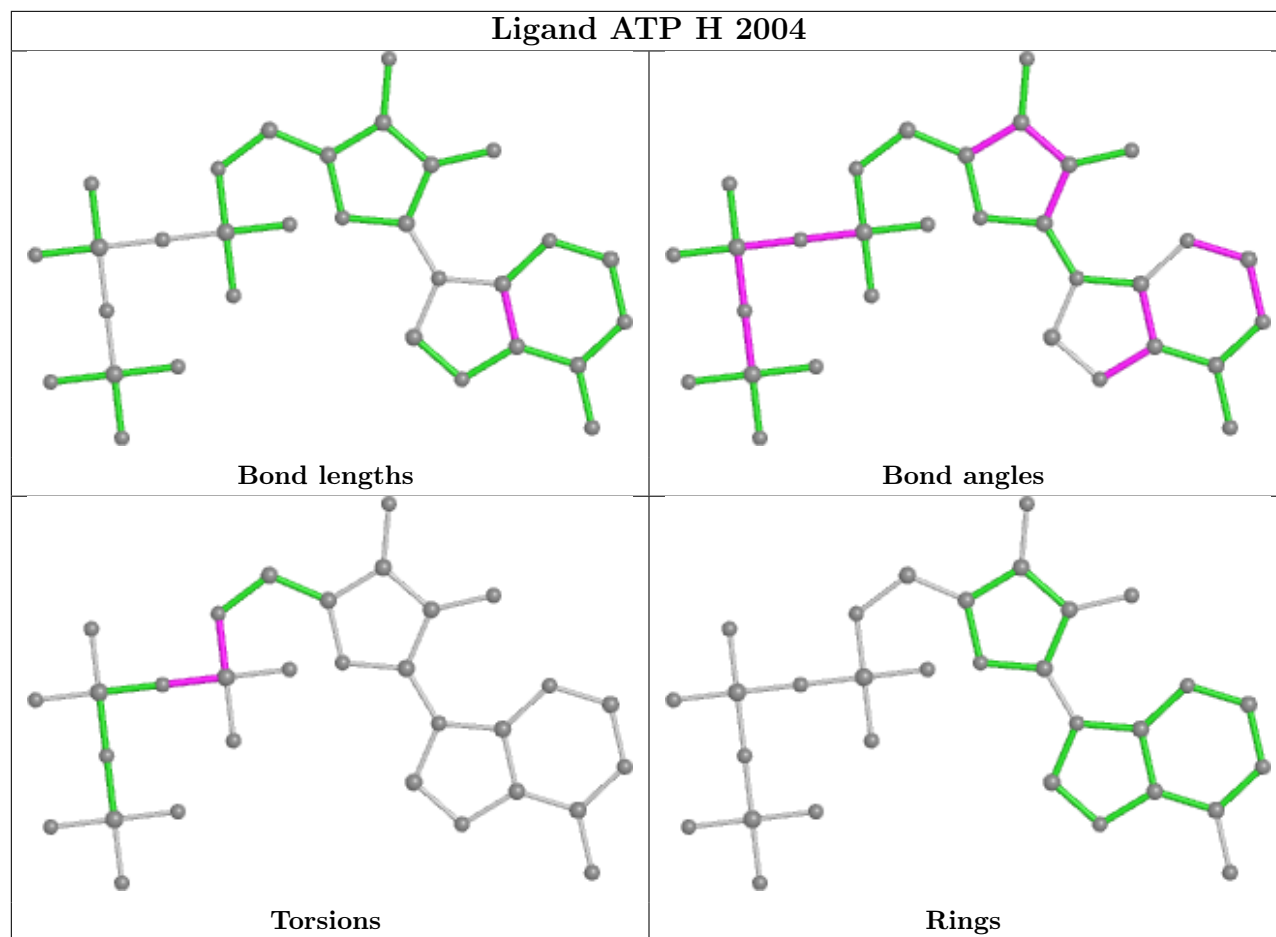


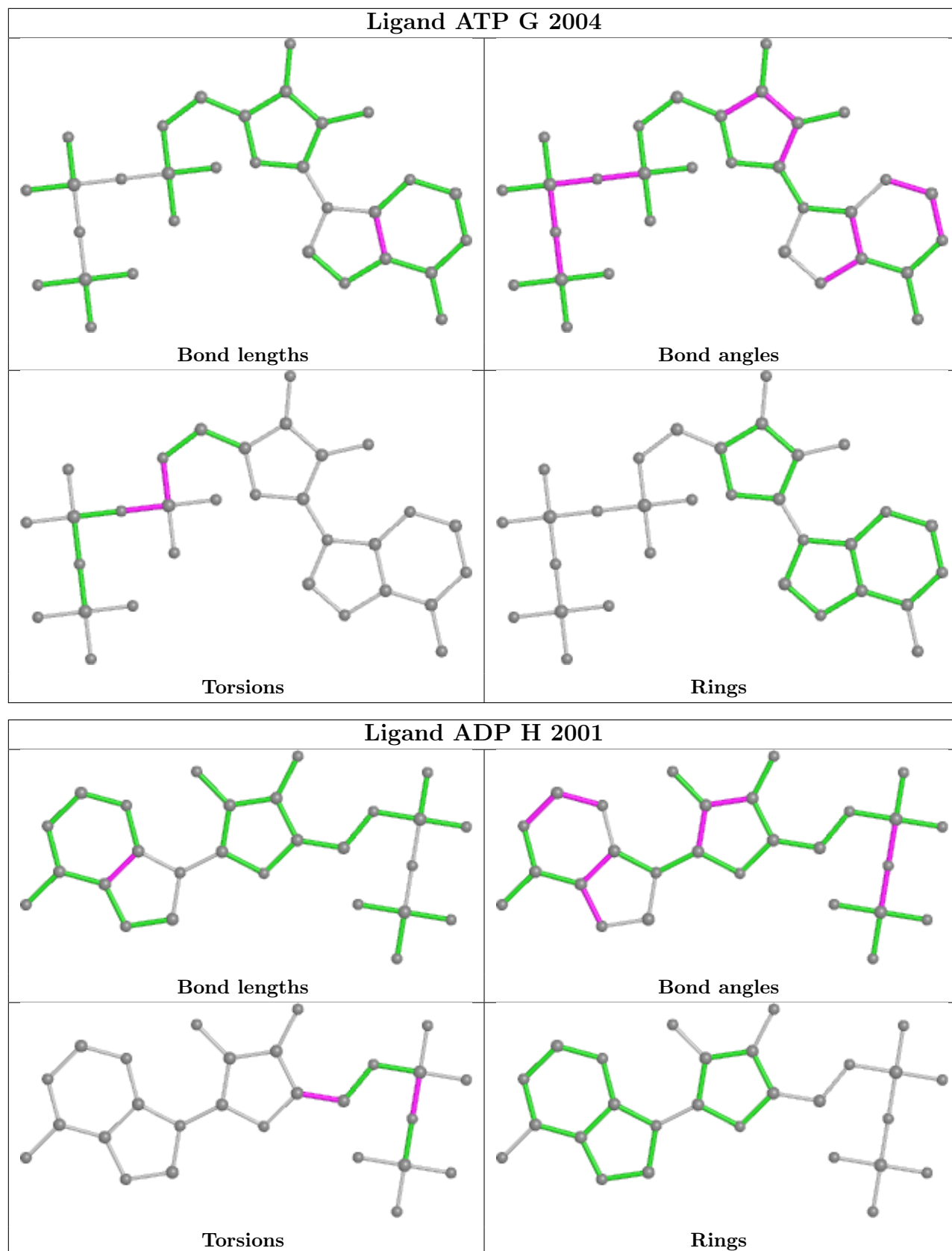


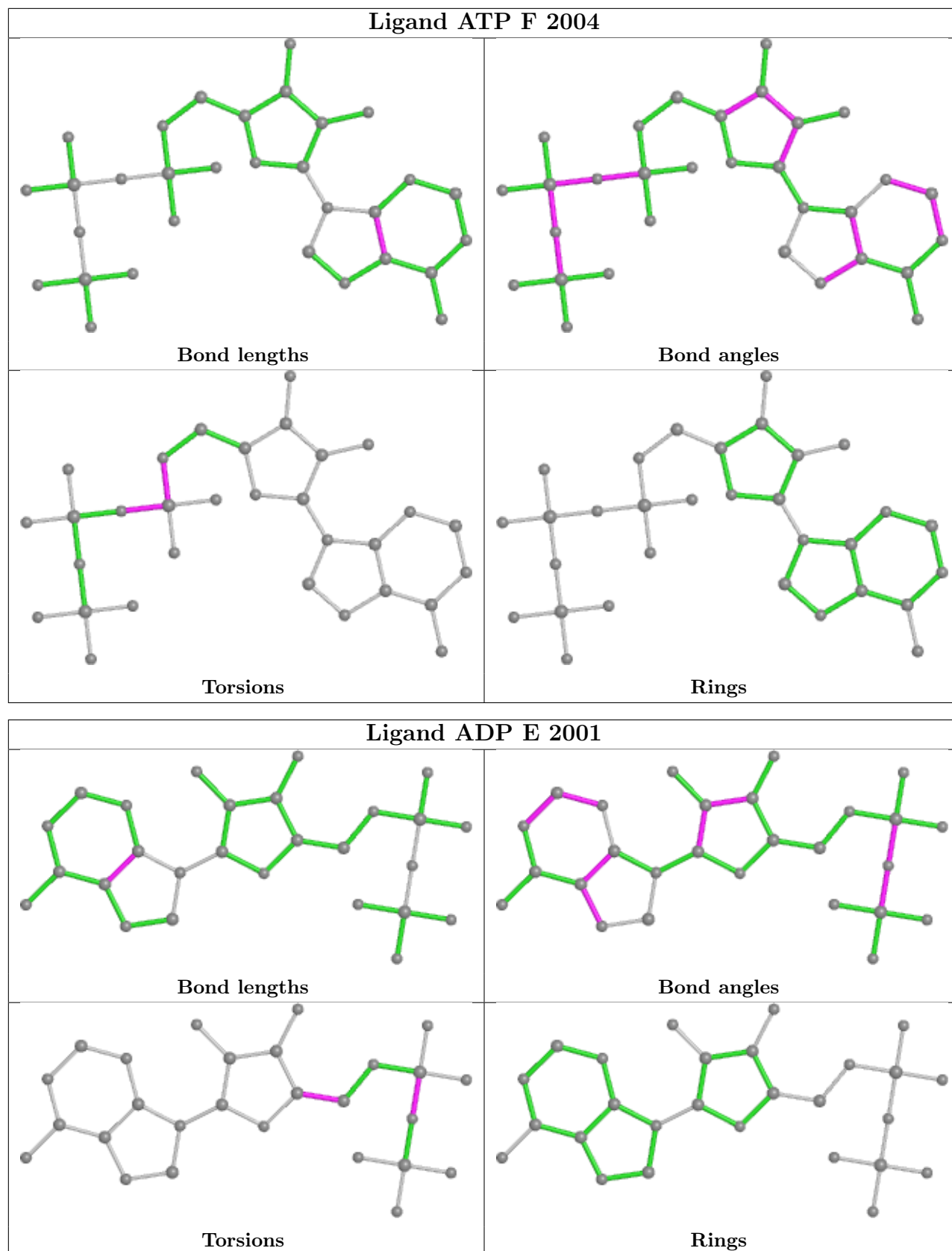


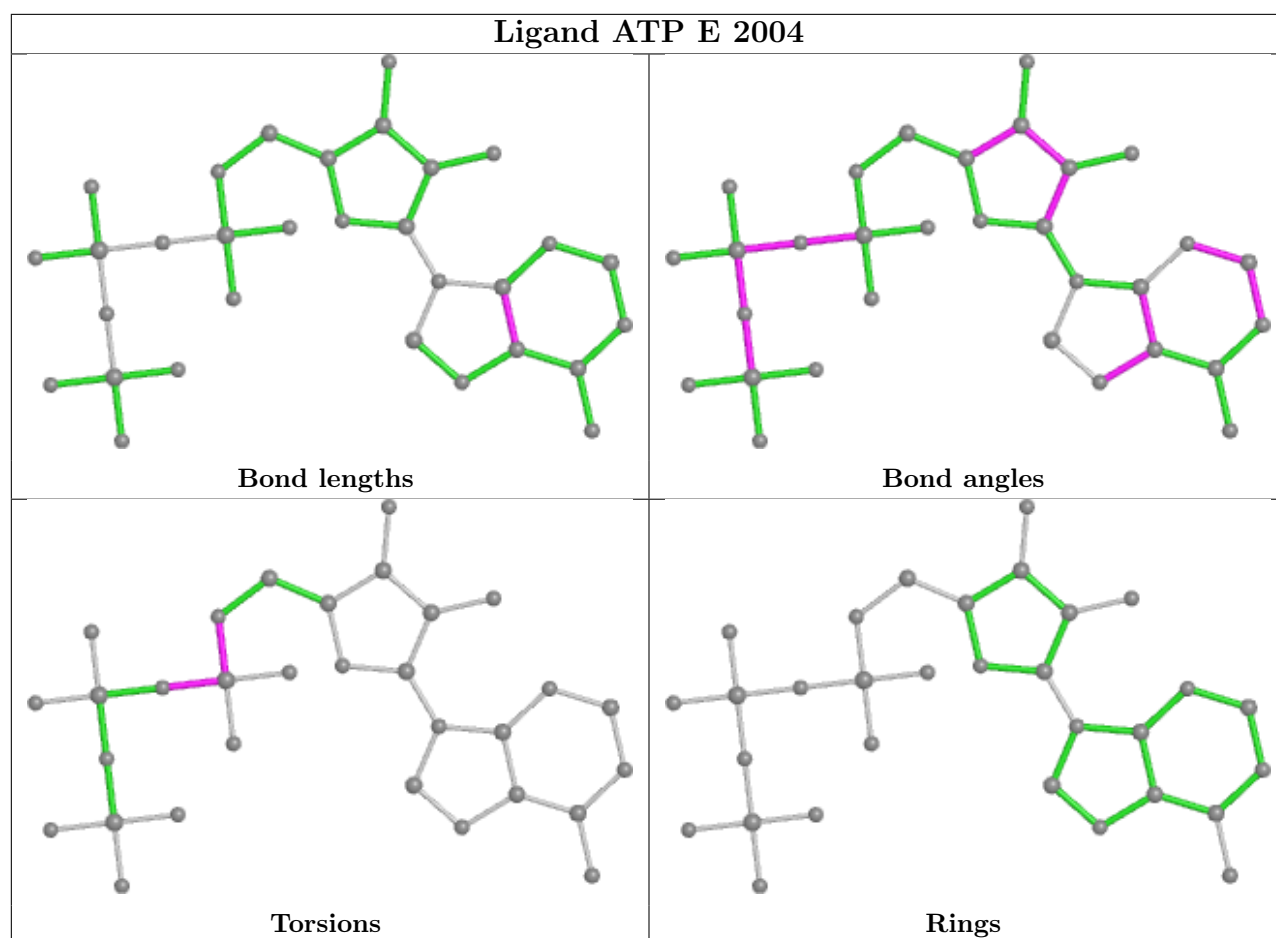












## 5.7 Other polymers [i](#)

There are no such residues in this entry.

## 5.8 Polymer linkage issues [i](#)

There are no chain breaks in this entry.

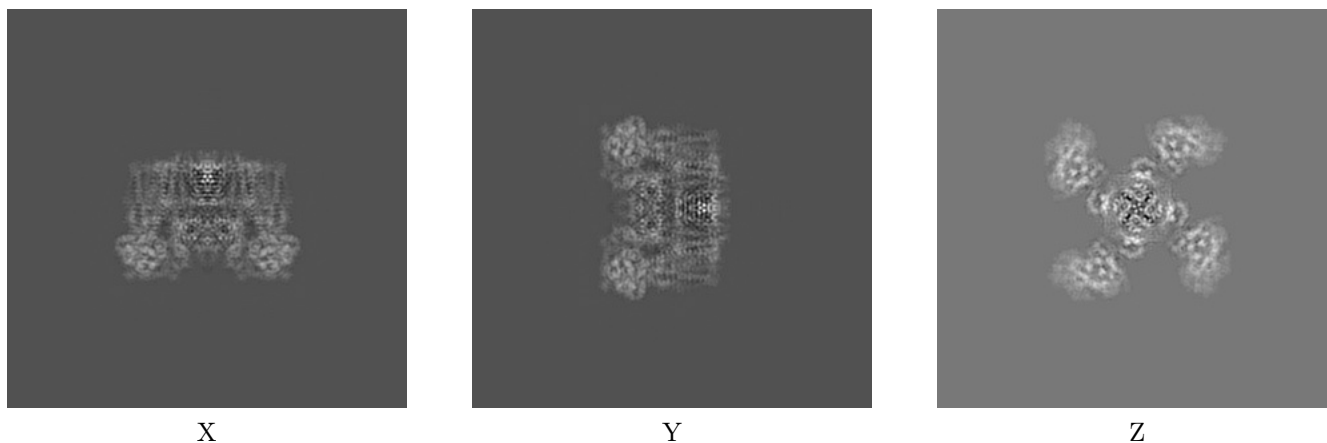
## 6 Map visualisation [i](#)

This section contains visualisations of the EMDB entry EMD-7339. These allow visual inspection of the internal detail of the map and identification of artifacts.

No raw map or half-maps were deposited for this entry and therefore no images, graphs, etc. pertaining to the raw map can be shown.

### 6.1 Orthogonal projections [i](#)

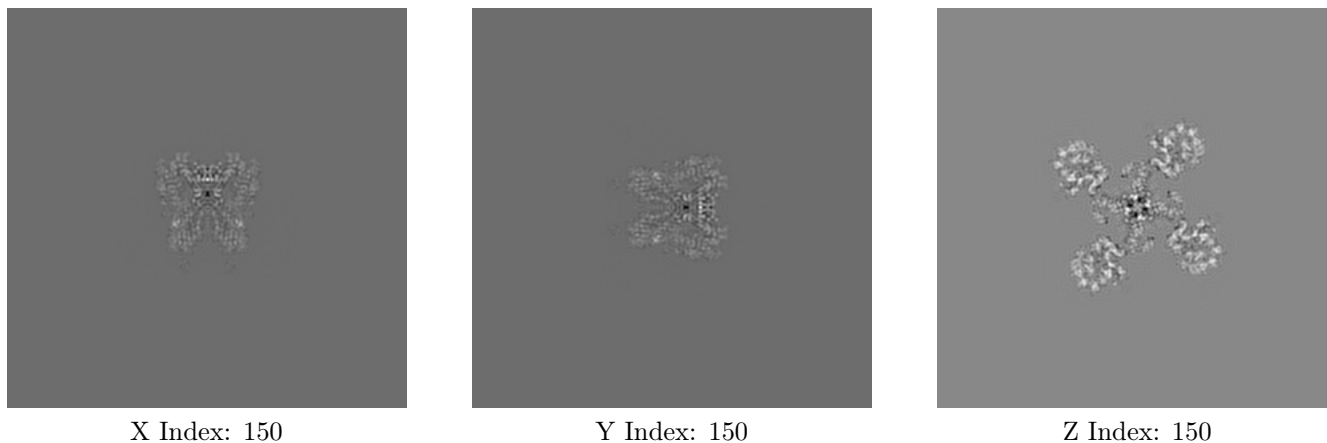
#### 6.1.1 Primary map



The images above show the map projected in three orthogonal directions.

### 6.2 Central slices [i](#)

#### 6.2.1 Primary map

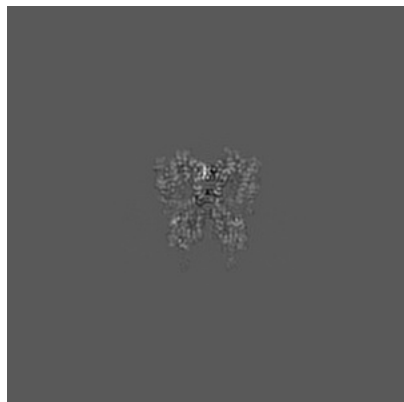




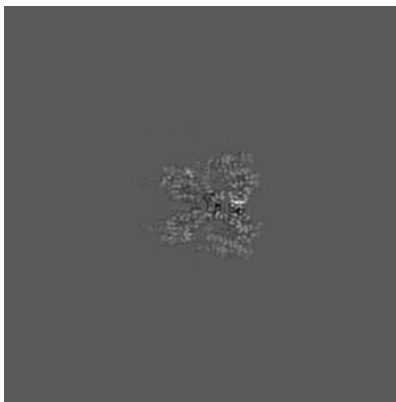
The images above show central slices of the map in three orthogonal directions.

## 6.3 Largest variance slices [i](#)

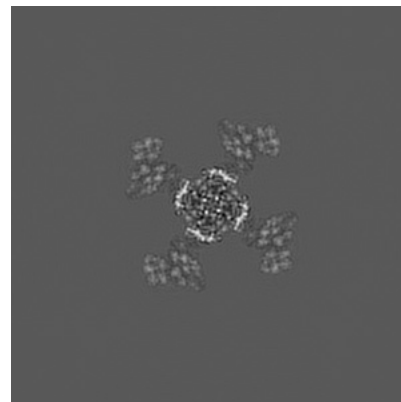
### 6.3.1 Primary map



X Index: 149



Y Index: 149

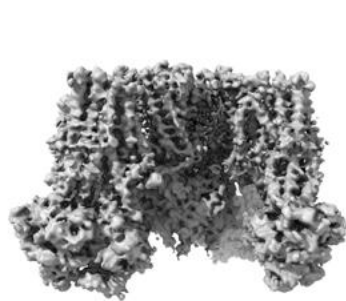


Z Index: 138

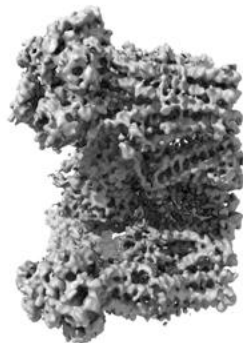
The images above show the largest variance slices of the map in three orthogonal directions.

## 6.4 Orthogonal surface views [i](#)

### 6.4.1 Primary map



X



Y



Z

The images above show the 3D surface view of the map at the recommended contour level 0.0343. These images, in conjunction with the slice images, may facilitate assessment of whether an appropriate contour level has been provided.

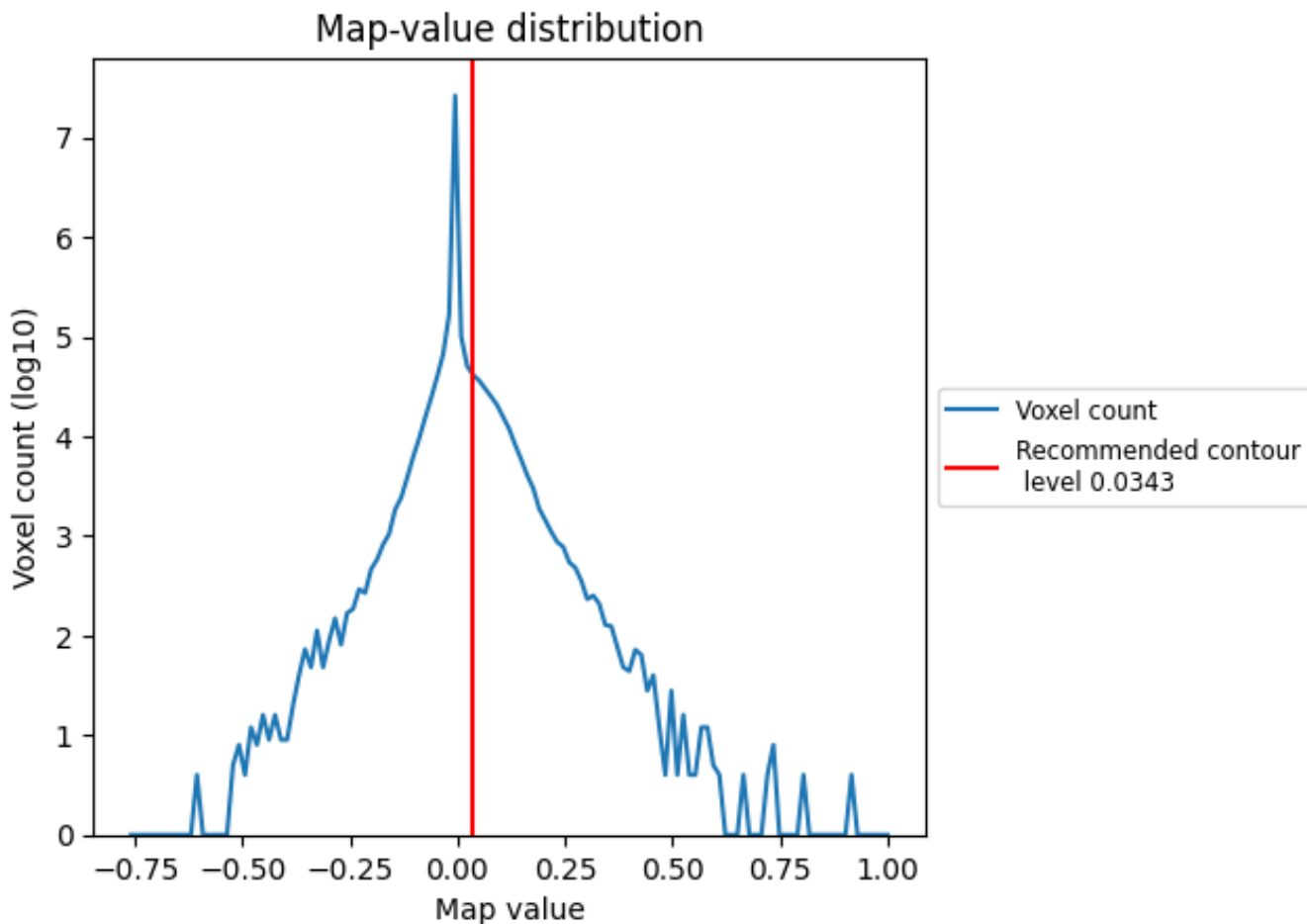
## 6.5 Mask visualisation

This section was not generated. No masks/segmentation were deposited.

## 7 Map analysis [i](#)

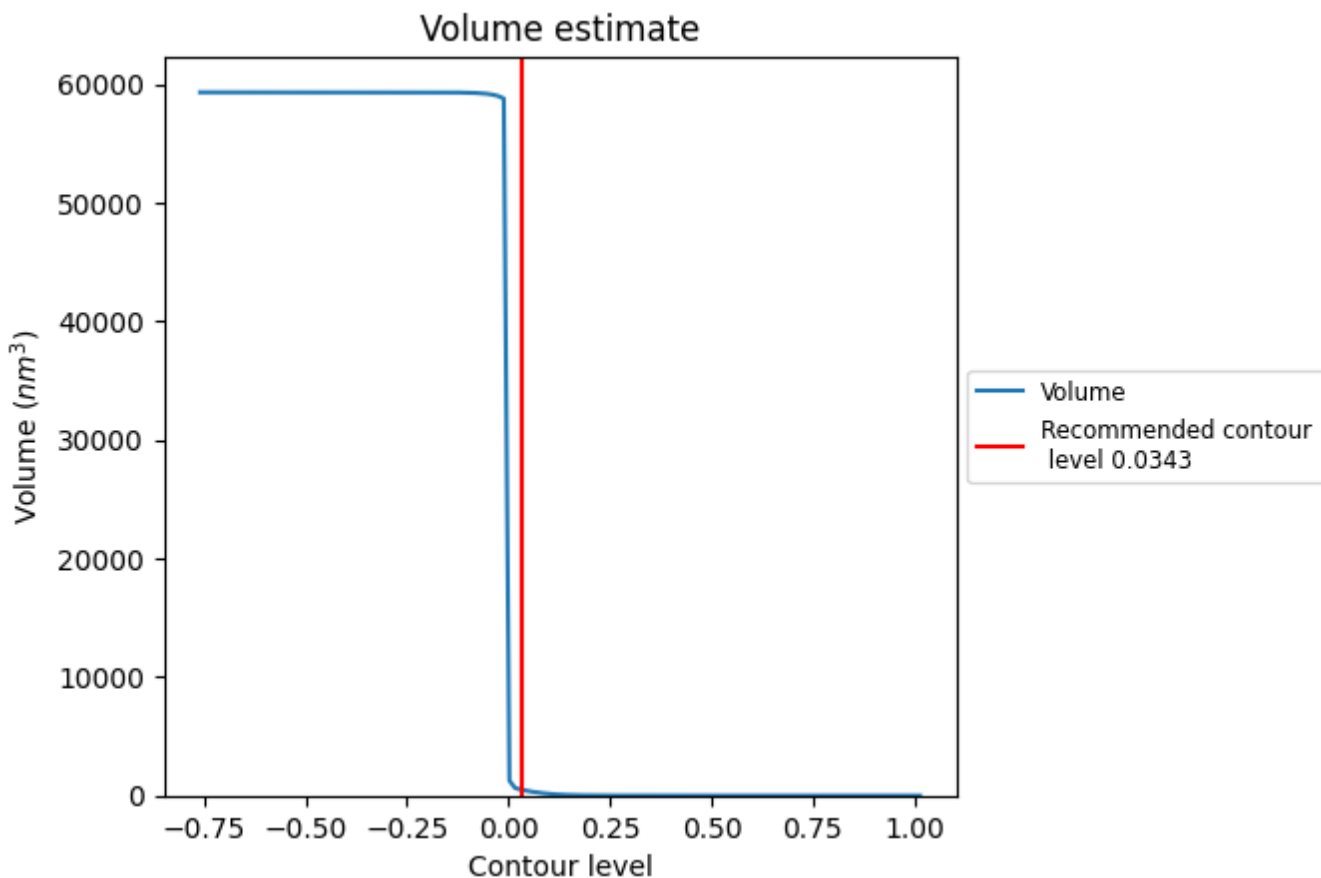
This section contains the results of statistical analysis of the map.

### 7.1 Map-value distribution [i](#)



The map-value distribution is plotted in 128 intervals along the x-axis. The y-axis is logarithmic. A spike in this graph at zero usually indicates that the volume has been masked.

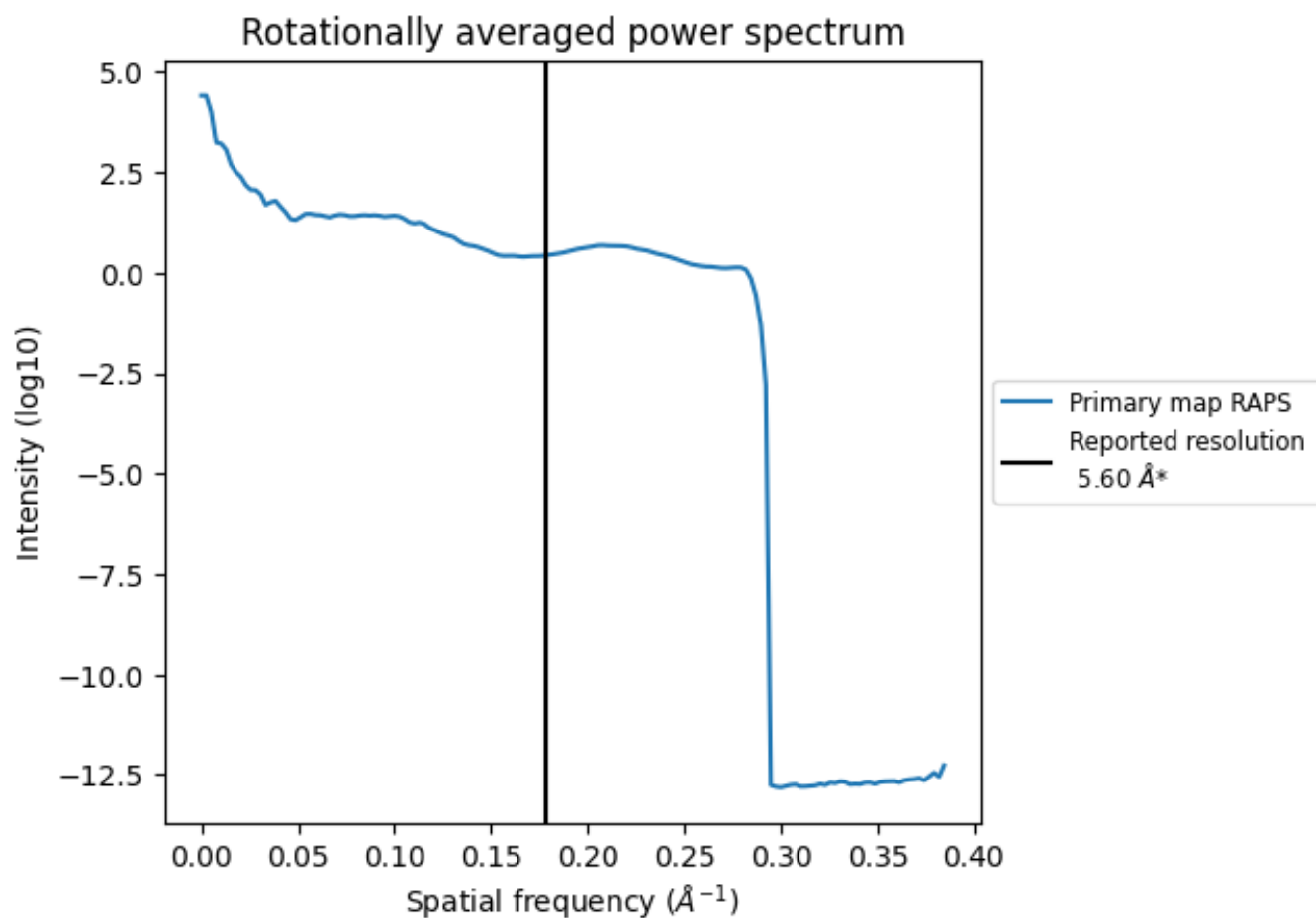
## 7.2 Volume estimate [i](#)



The volume at the recommended contour level is 479 nm<sup>3</sup>; this corresponds to an approximate mass of 433 kDa.

The volume estimate graph shows how the enclosed volume varies with the contour level. The recommended contour level is shown as a vertical line and the intersection between the line and the curve gives the volume of the enclosed surface at the given level.

### 7.3 Rotationally averaged power spectrum [i](#)



\*Reported resolution corresponds to spatial frequency of  $0.179 \text{\AA}^{-1}$

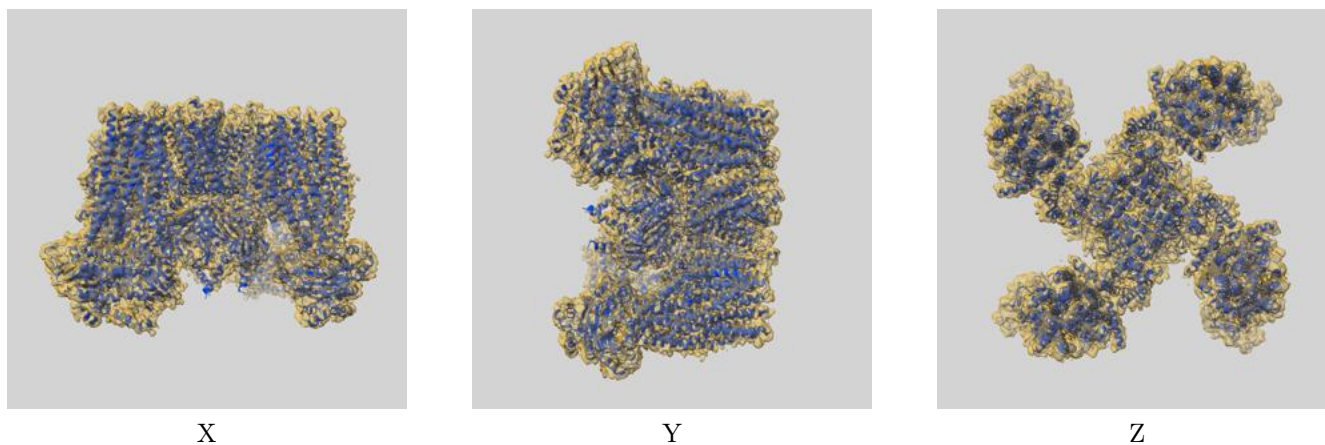
## 8 Fourier-Shell correlation

This section was not generated. No FSC curve or half-maps provided.

## 9 Map-model fit [i](#)

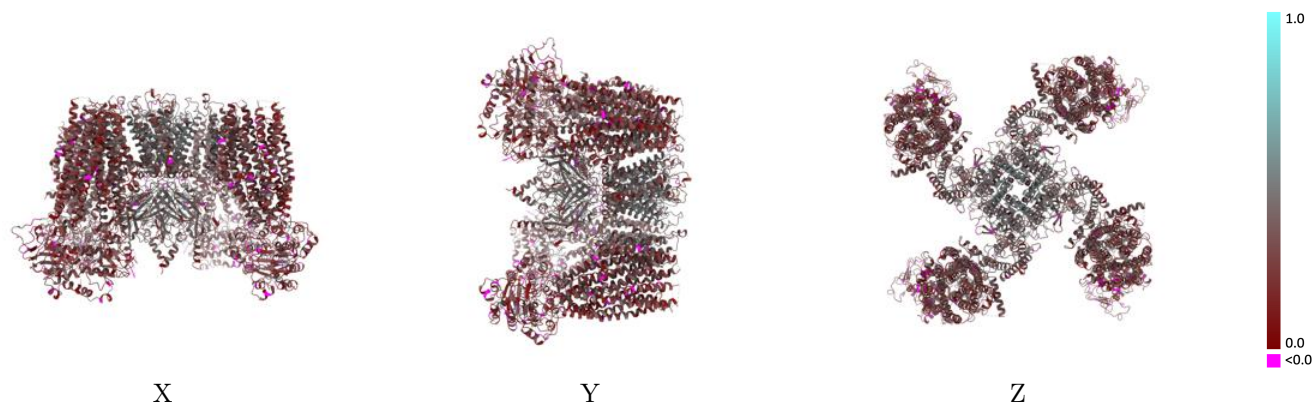
This section contains information regarding the fit between EMDB map EMD-7339 and PDB model 6C3P. Per-residue inclusion information can be found in section 3 on page 8.

### 9.1 Map-model overlay [i](#)



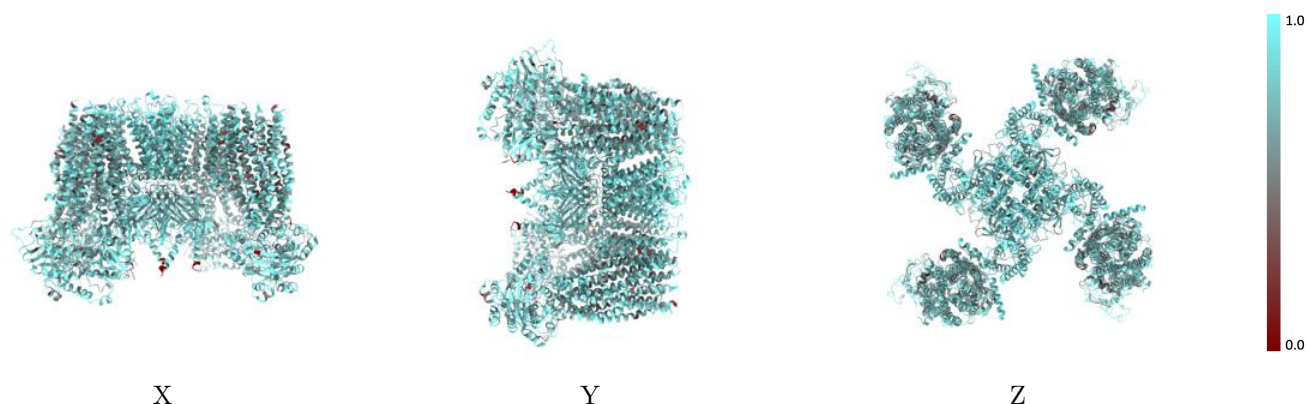
The images above show the 3D surface view of the map at the recommended contour level 0.0343 at 50% transparency in yellow overlaid with a ribbon representation of the model coloured in blue. These images allow for the visual assessment of the quality of fit between the atomic model and the map.

## 9.2 Q-score mapped to coordinate model [i](#)



The images above show the model with each residue coloured according to its Q-score. This shows their resolvability in the map with higher Q-score values reflecting better resolvability. Please note: Q-score is calculating the resolvability of atoms, and thus high values are only expected at resolutions at which atoms can be resolved. Low Q-score values may therefore be expected for many entries.

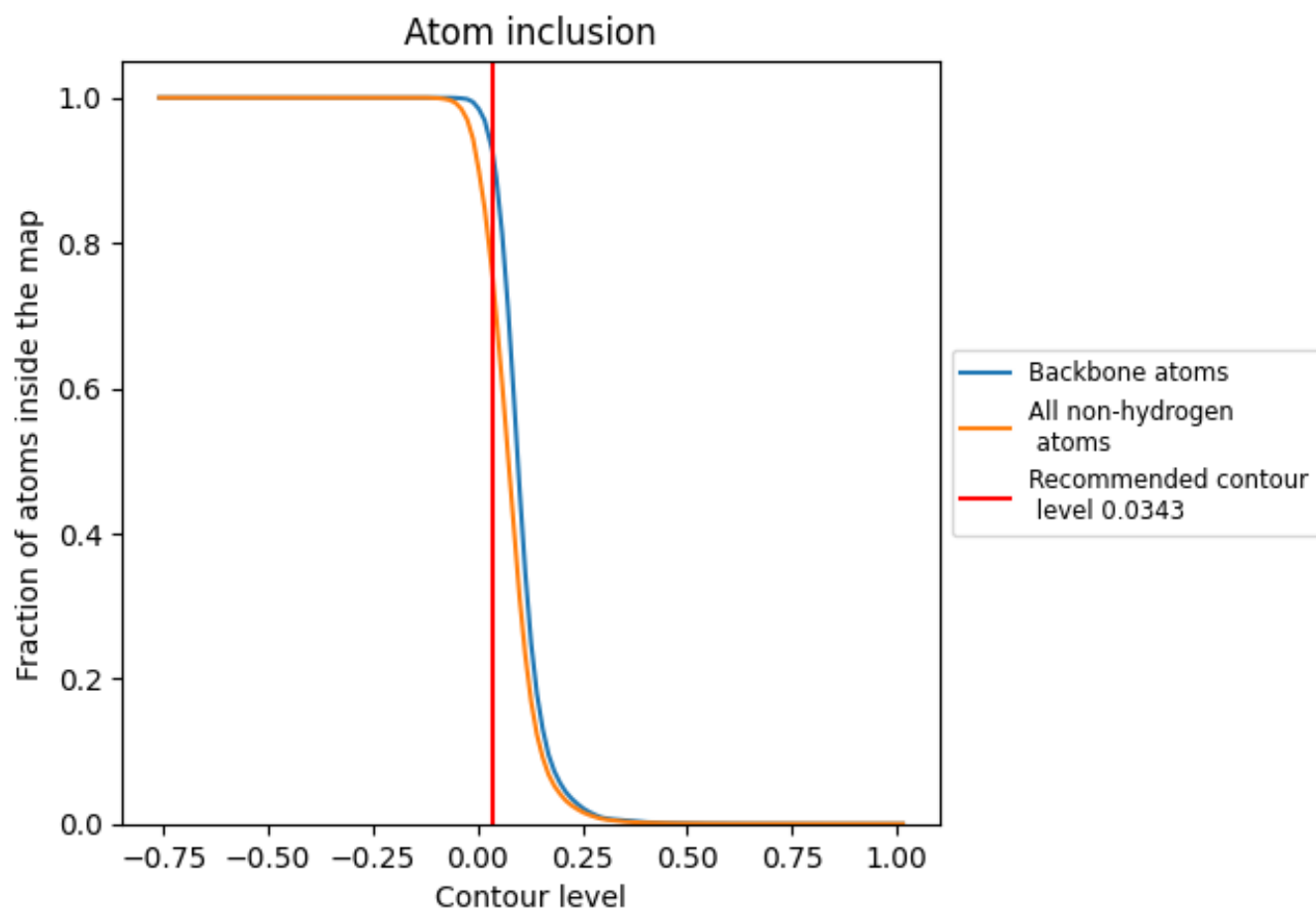
## 9.3 Atom inclusion mapped to coordinate model [i](#)



The images above show the model with each residue coloured according to its atom inclusion. This shows to what extent they are inside the map at the recommended contour level (0.0343).





















## 9.4 Atom inclusion [i](#)



At the recommended contour level, 93% of all backbone atoms, 76% of all non-hydrogen atoms, are inside the map.

## 9.5 Map-model fit summary

The table lists the average atom inclusion at the recommended contour level (0.0343) and Q-score for the entire model and for each chain.

Chain	Atom inclusion	Q-score
All	 0.7595	 0.2940
A	 0.8316	 0.3920
B	 0.8270	 0.3930
C	 0.8311	 0.3920
D	 0.8347	 0.3950
E	 0.7419	 0.2720
F	 0.7420	 0.2680
G	 0.7420	 0.2710
H	 0.7403	 0.2670

