



wwPDB X-ray Structure Validation Summary Report ⓘ

Dec 16, 2023 – 03:28 pm GMT

PDB ID : 4BWE
Title : Crystal structure of C-terminally truncated glypican-1 after controlled dehydration to 86 percent relative humidity
Authors : Awad, W.; Svensson Birkedal, G.; Thunnissen, M.M.G.M.; Mani, K.; Logan, D.T.
Deposited on : 2013-07-01
Resolution : 2.46 Å(reported)

This is a wwPDB X-ray Structure Validation Summary Report for a publicly released PDB entry.

We welcome your comments at validation@mail.wwpdb.org

A user guide is available at

<https://www.wwpdb.org/validation/2017/XrayValidationReportHelp>

with specific help available everywhere you see the ⓘ symbol.

The types of validation reports are described at

<http://www.wwpdb.org/validation/2017/FAQs#types>.

The following versions of software and data (see [references ⓘ](#)) were used in the production of this report:

MolProbity : 4.02b-467
Mogul : 1.8.4, CSD as541be (2020)
Xtriage (Phenix) : 1.13
EDS : 2.36
Percentile statistics : 20191225.v01 (using entries in the PDB archive December 25th 2019)
Refmac : 5.8.0158
CCP4 : 7.0.044 (Gargrove)
Ideal geometry (proteins) : Engh & Huber (2001)
Ideal geometry (DNA, RNA) : Parkinson et al. (1996)
Validation Pipeline (wwPDB-VP) : 2.36

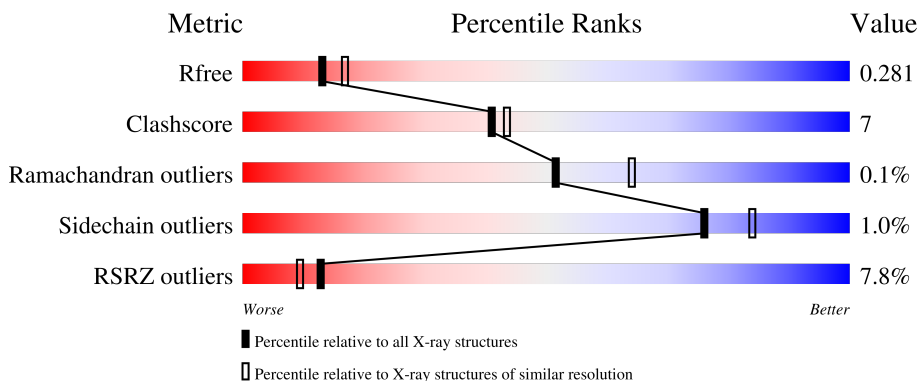
1 Overall quality at a glance

The following experimental techniques were used to determine the structure:

X-RAY DIFFRACTION

The reported resolution of this entry is 2.46 Å.

Percentile scores (ranging between 0-100) for global validation metrics of the entry are shown in the following graphic. The table shows the number of entries on which the scores are based.



Metric	Whole archive (#Entries)	Similar resolution (#Entries, resolution range(Å))
R_{free}	130704	1544 (2.48-2.44)
Clashscore	141614	1613 (2.48-2.44)
Ramachandran outliers	138981	1598 (2.48-2.44)
Sidechain outliers	138945	1598 (2.48-2.44)
RSRZ outliers	127900	1523 (2.48-2.44)

The table below summarises the geometric issues observed across the polymeric chains and their fit to the electron density. The red, orange, yellow and green segments of the lower bar indicate the fraction of residues that contain outliers for ≥ 3 , 2, 1 and 0 types of geometric quality criteria respectively. A grey segment represents the fraction of residues that are not modelled. The numeric value for each fraction is indicated below the corresponding segment, with a dot representing fractions $\leq 5\%$. The upper red bar (where present) indicates the fraction of residues that have poor fit to the electron density. The numeric value is given above the bar.

Mol	Chain	Length	Quality of chain
1	A	478	
1	B	478	
1	C	478	
1	D	478	

2 Entry composition i

There are 4 unique types of molecules in this entry. The entry contains 13323 atoms, of which 0 are hydrogens and 0 are deuteriums.

In the tables below, the ZeroOcc column contains the number of atoms modelled with zero occupancy, the AltConf column contains the number of residues with at least one atom in alternate conformation and the Trace column contains the number of residues modelled with at most 2 atoms.

- Molecule 1 is a protein called Glypican-1.

Mol	Chain	Residues	Atoms					ZeroOcc	AltConf	Trace
			Total	C	N	O	S			
1	A	402	3157	1970	576	589	22	0	6	0
1	B	422	3308	2068	596	620	24	0	3	0
1	C	399	3109	1942	564	581	22	0	0	0
1	D	421	3307	2069	596	618	24	0	5	0

There are 88 discrepancies between the modelled and reference sequences:

Chain	Residue	Modelled	Actual	Comment	Reference
A	2	ALA	-	expression tag	UNP P35052
A	3	PRO	-	expression tag	UNP P35052
A	4	GLN	-	expression tag	UNP P35052
A	5	LEU	-	expression tag	UNP P35052
A	6	HIS	-	expression tag	UNP P35052
A	7	HIS	-	expression tag	UNP P35052
A	8	HIS	-	expression tag	UNP P35052
A	9	HIS	-	expression tag	UNP P35052
A	10	HIS	-	expression tag	UNP P35052
A	11	HIS	-	expression tag	UNP P35052
A	12	ASP	-	expression tag	UNP P35052
A	13	LEU	-	expression tag	UNP P35052
A	14	TYR	-	expression tag	UNP P35052
A	15	GLU	-	expression tag	UNP P35052
A	16	ASN	-	expression tag	UNP P35052
A	17	LEU	-	expression tag	UNP P35052
A	18	TYR	-	expression tag	UNP P35052
A	19	PHE	-	expression tag	UNP P35052
A	20	GLN	-	expression tag	UNP P35052
A	21	GLY	-	expression tag	UNP P35052
A	22	LYS	-	expression tag	UNP P35052

Continued on next page...

Continued from previous page...

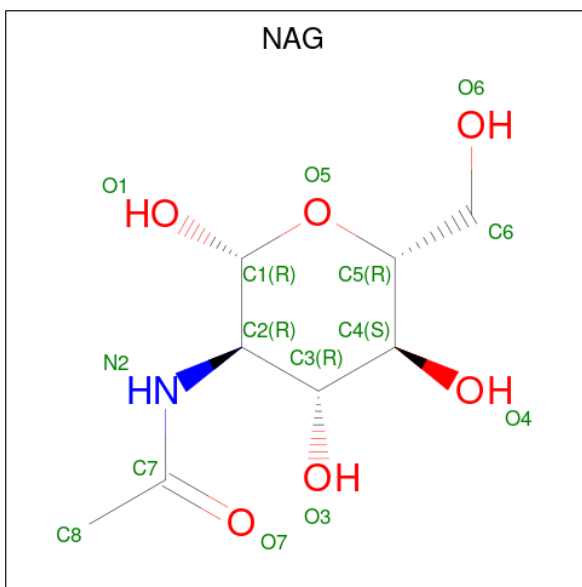
Chain	Residue	Modelled	Actual	Comment	Reference
A	23	LEU	-	expression tag	UNP P35052
B	2	ALA	-	expression tag	UNP P35052
B	3	PRO	-	expression tag	UNP P35052
B	4	GLN	-	expression tag	UNP P35052
B	5	LEU	-	expression tag	UNP P35052
B	6	HIS	-	expression tag	UNP P35052
B	7	HIS	-	expression tag	UNP P35052
B	8	HIS	-	expression tag	UNP P35052
B	9	HIS	-	expression tag	UNP P35052
B	10	HIS	-	expression tag	UNP P35052
B	11	HIS	-	expression tag	UNP P35052
B	12	ASP	-	expression tag	UNP P35052
B	13	LEU	-	expression tag	UNP P35052
B	14	TYR	-	expression tag	UNP P35052
B	15	GLU	-	expression tag	UNP P35052
B	16	ASN	-	expression tag	UNP P35052
B	17	LEU	-	expression tag	UNP P35052
B	18	TYR	-	expression tag	UNP P35052
B	19	PHE	-	expression tag	UNP P35052
B	20	GLN	-	expression tag	UNP P35052
B	21	GLY	-	expression tag	UNP P35052
B	22	LYS	-	expression tag	UNP P35052
B	23	LEU	-	expression tag	UNP P35052
C	2	ALA	-	expression tag	UNP P35052
C	3	PRO	-	expression tag	UNP P35052
C	4	GLN	-	expression tag	UNP P35052
C	5	LEU	-	expression tag	UNP P35052
C	6	HIS	-	expression tag	UNP P35052
C	7	HIS	-	expression tag	UNP P35052
C	8	HIS	-	expression tag	UNP P35052
C	9	HIS	-	expression tag	UNP P35052
C	10	HIS	-	expression tag	UNP P35052
C	11	HIS	-	expression tag	UNP P35052
C	12	ASP	-	expression tag	UNP P35052
C	13	LEU	-	expression tag	UNP P35052
C	14	TYR	-	expression tag	UNP P35052
C	15	GLU	-	expression tag	UNP P35052
C	16	ASN	-	expression tag	UNP P35052
C	17	LEU	-	expression tag	UNP P35052
C	18	TYR	-	expression tag	UNP P35052
C	19	PHE	-	expression tag	UNP P35052
C	20	GLN	-	expression tag	UNP P35052

Continued on next page...

Continued from previous page...

Chain	Residue	Modelled	Actual	Comment	Reference
C	21	GLY	-	expression tag	UNP P35052
C	22	LYS	-	expression tag	UNP P35052
C	23	LEU	-	expression tag	UNP P35052
D	2	ALA	-	expression tag	UNP P35052
D	3	PRO	-	expression tag	UNP P35052
D	4	GLN	-	expression tag	UNP P35052
D	5	LEU	-	expression tag	UNP P35052
D	6	HIS	-	expression tag	UNP P35052
D	7	HIS	-	expression tag	UNP P35052
D	8	HIS	-	expression tag	UNP P35052
D	9	HIS	-	expression tag	UNP P35052
D	10	HIS	-	expression tag	UNP P35052
D	11	HIS	-	expression tag	UNP P35052
D	12	ASP	-	expression tag	UNP P35052
D	13	LEU	-	expression tag	UNP P35052
D	14	TYR	-	expression tag	UNP P35052
D	15	GLU	-	expression tag	UNP P35052
D	16	ASN	-	expression tag	UNP P35052
D	17	LEU	-	expression tag	UNP P35052
D	18	TYR	-	expression tag	UNP P35052
D	19	PHE	-	expression tag	UNP P35052
D	20	GLN	-	expression tag	UNP P35052
D	21	GLY	-	expression tag	UNP P35052
D	22	LYS	-	expression tag	UNP P35052
D	23	LEU	-	expression tag	UNP P35052

- Molecule 2 is 2-acetamido-2-deoxy-beta-D-glucopyranose (three-letter code: NAG) (formula: $C_8H_{15}NO_6$).



Mol	Chain	Residues	Atoms				ZeroOcc	AltConf
2	A	1	Total	C	N	O	0	0
			14	8	1	5		
2	B	1	Total	C	N	O	0	0
			14	8	1	5		
2	C	1	Total	C	N	O	0	0
			14	8	1	5		
2	D	1	Total	C	N	O	0	0
			14	8	1	5		

- Molecule 3 is CALCIUM ION (three-letter code: CA) (formula: Ca).

Mol	Chain	Residues	Atoms		ZeroOcc	AltConf
3	A	2	Total	Ca	0	0
			2	2		
3	B	2	Total	Ca	0	0
			2	2		
3	C	3	Total	Ca	0	0
			3	3		
3	D	2	Total	Ca	0	0
			2	2		

- Molecule 4 is water.

Mol	Chain	Residues	Atoms		ZeroOcc	AltConf
4	A	123	Total	O	0	0
			123	123		

Continued on next page...

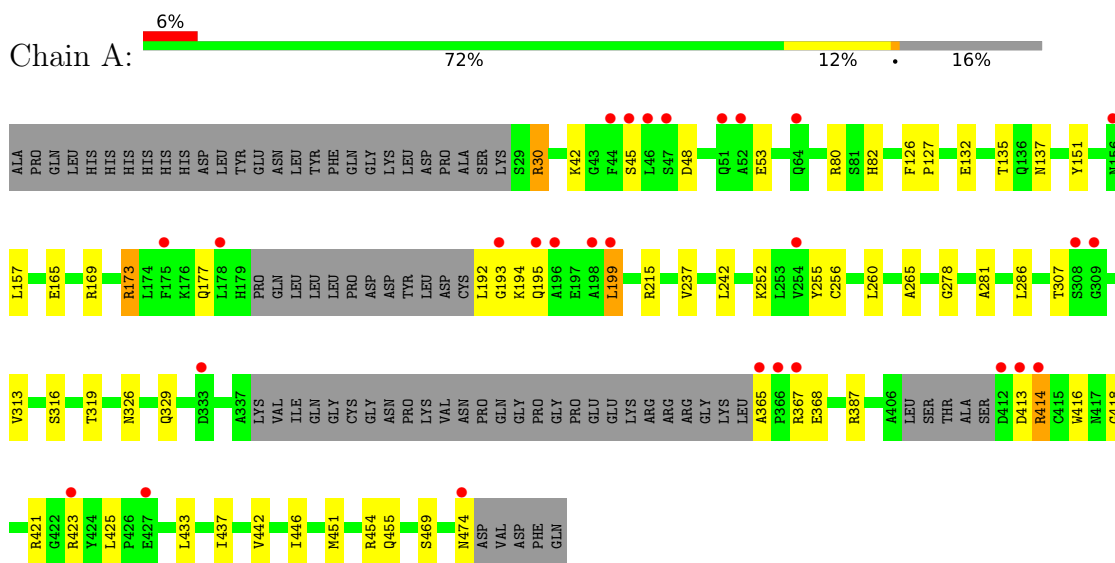
Continued from previous page...

Mol	Chain	Residues	Atoms		ZeroOcc	AltConf
4	B	82	Total 82	O 82	0	0
4	C	84	Total 84	O 84	0	0
4	D	88	Total 88	O 88	0	0

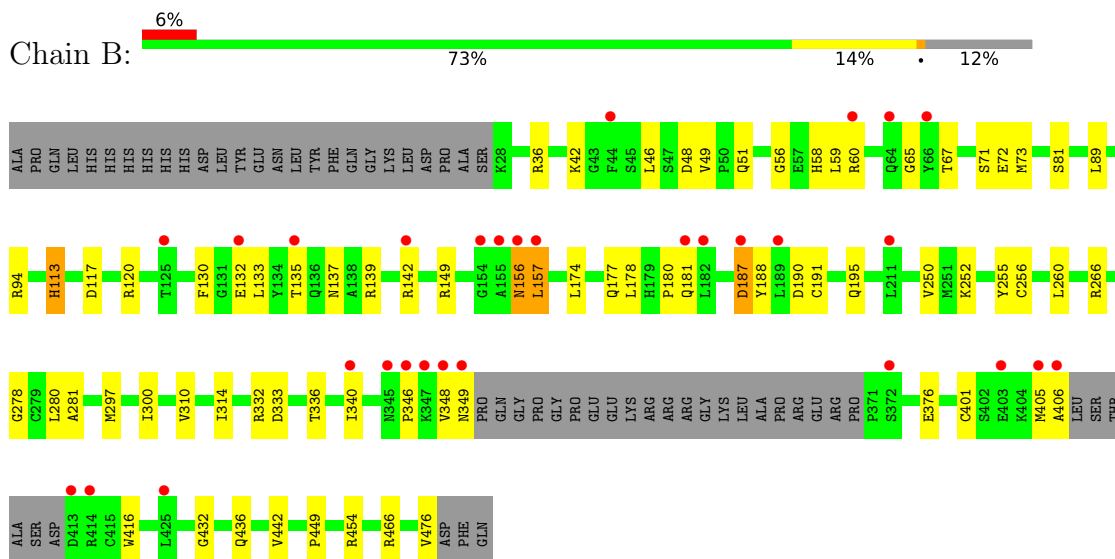
3 Residue-property plots [i](#)

These plots are drawn for all protein, RNA, DNA and oligosaccharide chains in the entry. The first graphic for a chain summarises the proportions of the various outlier classes displayed in the second graphic. The second graphic shows the sequence view annotated by issues in geometry and electron density. Residues are color-coded according to the number of geometric quality criteria for which they contain at least one outlier: green = 0, yellow = 1, orange = 2 and red = 3 or more. A red dot above a residue indicates a poor fit to the electron density ($RSRZ > 2$). Stretches of 2 or more consecutive residues without any outlier are shown as a green connector. Residues present in the sample, but not in the model, are shown in grey.

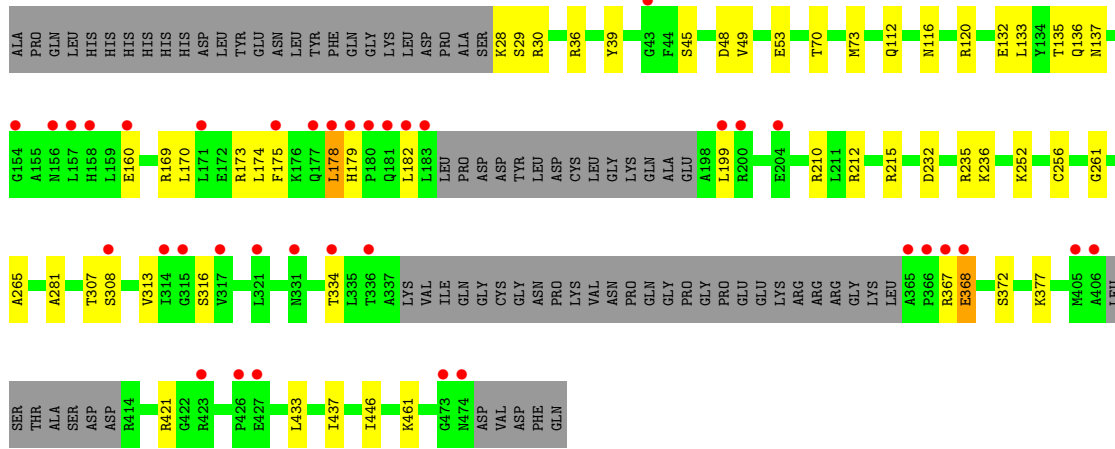
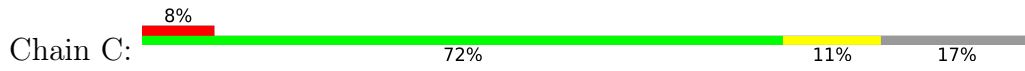
- Molecule 1: Glypican-1



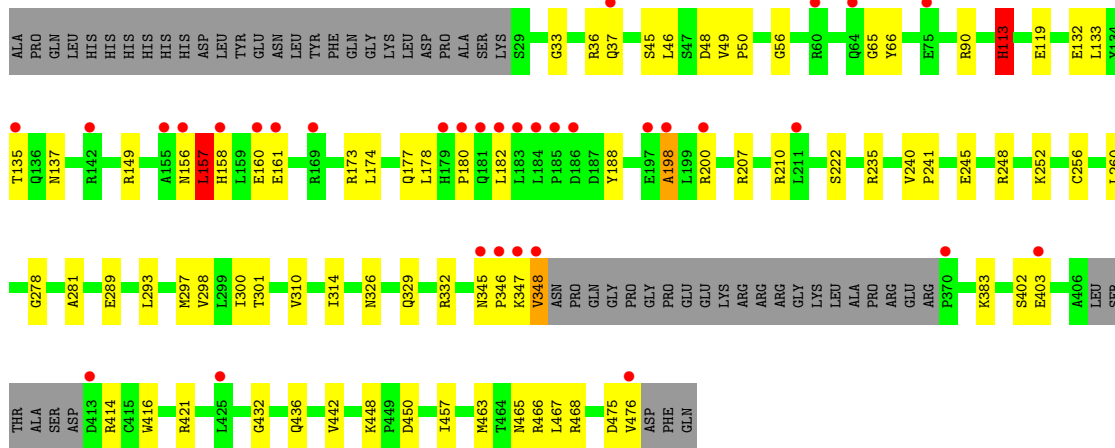
- Molecule 1: Glypican-1



- Molecule 1: Glypican-1



● Molecule 1: Glypican-1



4 Data and refinement statistics

Property	Value	Source
Space group	P 1 21 1	Depositor
Cell constants a, b, c, α , β , γ	47.23Å 166.72Å 139.09Å 90.00° 90.80° 90.00°	Depositor
Resolution (Å)	29.48 – 2.46 29.48 – 2.46	Depositor EDS
% Data completeness (in resolution range)	97.3 (29.48-2.46) 97.3 (29.48-2.46)	Depositor EDS
R_{merge}	0.10	Depositor
R_{sym}	(Not available)	Depositor
$\langle I/\sigma(I) \rangle$ ¹	1.82 (at 2.45Å)	Xtrriage
Refinement program	PHENIX (PHENIX.REFINE: 1.8.4_1496)	Depositor
R, R_{free}	0.229 , 0.280 0.233 , 0.281	Depositor DCC
R_{free} test set	3807 reflections (5.03%)	wwPDB-VP
Wilson B-factor (Å ²)	36.8	Xtrriage
Anisotropy	0.353	Xtrriage
Bulk solvent k_{sol} (e/Å ³), B_{sol} (Å ²)	0.34 , 62.0	EDS
L-test for twinning ²	$\langle L \rangle = 0.52$, $\langle L^2 \rangle = 0.35$	Xtrriage
Estimated twinning fraction	0.043 for h,-k,-l	Xtrriage
F_o, F_c correlation	0.94	EDS
Total number of atoms	13323	wwPDB-VP
Average B, all atoms (Å ²)	58.0	wwPDB-VP

Xtrriage's analysis on translational NCS is as follows: *The analyses of the Patterson function reveals a significant off-origin peak that is 45.73 % of the origin peak, indicating pseudo-translational symmetry. The chance of finding a peak of this or larger height randomly in a structure without pseudo-translational symmetry is equal to 1.2663e-04. The detected translational NCS is most likely also responsible for the elevated intensity ratio.*

¹Intensities estimated from amplitudes.

²Theoretical values of $\langle |L| \rangle$, $\langle L^2 \rangle$ for acentric reflections are 0.5, 0.333 respectively for untwinned datasets, and 0.375, 0.2 for perfectly twinned datasets.

5 Model quality [i](#)

5.1 Standard geometry [i](#)

Bond lengths and bond angles in the following residue types are not validated in this section: CA, NAG

The Z score for a bond length (or angle) is the number of standard deviations the observed value is removed from the expected value. A bond length (or angle) with $|Z| > 5$ is considered an outlier worth inspection. RMSZ is the root-mean-square of all Z scores of the bond lengths (or angles).

Mol	Chain	Bond lengths		Bond angles	
		RMSZ	# Z >5	RMSZ	# Z >5
1	A	0.32	0/3230	0.51	1/4368 (0.0%)
1	B	0.31	0/3377	0.48	3/4570 (0.1%)
1	C	0.28	0/3165	0.44	1/4283 (0.0%)
1	D	0.31	0/3383	0.50	3/4580 (0.1%)
All	All	0.30	0/13155	0.48	8/17801 (0.0%)

Chiral center outliers are detected by calculating the chiral volume of a chiral center and verifying if the center is modelled as a planar moiety or with the opposite hand. A planarity outlier is detected by checking planarity of atoms in a peptide group, atoms in a mainchain group or atoms of a sidechain that are expected to be planar.

Mol	Chain	#Chirality outliers	#Planarity outliers
1	A	0	1
1	B	0	1
1	D	0	3
All	All	0	5

There are no bond length outliers.

The worst 5 of 8 bond angle outliers are listed below:

Mol	Chain	Res	Type	Atoms	Z	Observed(°)	Ideal(°)
1	C	178	LEU	CA-CB-CG	5.77	128.56	115.30
1	B	113[A]	HIS	N-CA-C	5.68	126.34	111.00
1	B	113[B]	HIS	N-CA-C	5.68	126.34	111.00
1	D	157	LEU	CA-CB-CG	5.68	128.36	115.30
1	D	113[A]	HIS	N-CA-C	5.38	125.52	111.00

There are no chirality outliers.

All (5) planarity outliers are listed below:

Mol	Chain	Res	Type	Group
1	A	307	THR	Peptide
1	B	156	ASN	Peptide
1	D	113[A]	HIS	Mainchain
1	D	113[B]	HIS	Mainchain
1	D	198	ALA	Peptide

5.2 Too-close contacts [i](#)

In the following table, the Non-H and H(model) columns list the number of non-hydrogen atoms and hydrogen atoms in the chain respectively. The H(added) column lists the number of hydrogen atoms added and optimized by MolProbity. The Clashes column lists the number of clashes within the asymmetric unit, whereas Symm-Clashes lists symmetry-related clashes.

Mol	Chain	Non-H	H(model)	H(added)	Clashes	Symm-Clashes
1	A	3157	0	3104	39	0
1	B	3308	0	3258	48	0
1	C	3109	0	3049	40	1
1	D	3307	0	3259	52	1
2	A	14	0	13	0	0
2	B	14	0	13	6	0
2	C	14	0	13	0	0
2	D	14	0	13	0	0
3	A	2	0	0	0	0
3	B	2	0	0	0	0
3	C	3	0	0	0	0
3	D	2	0	0	0	0
4	A	123	0	0	4	0
4	B	82	0	0	2	0
4	C	84	0	0	5	0
4	D	88	0	0	3	0
All	All	13323	0	12722	181	1

The all-atom clashscore is defined as the number of clashes found per 1000 atoms (including hydrogen atoms). The all-atom clashscore for this structure is 7.

The worst 5 of 181 close contacts within the same asymmetric unit are listed below, sorted by their clash magnitude.

Atom-1	Atom-2	Interatomic distance (Å)	Clash overlap (Å)
1:D:133:LEU:O	1:D:137:ASN:ND2	1.87	1.08
1:C:232:ASP:OD1	1:C:235:ARG:NH1	1.89	1.05
1:B:133:LEU:HA	1:B:177:GLN:HE22	1.39	0.85

Continued on next page...

Continued from previous page...

Atom-1	Atom-2	Interatomic distance (Å)	Clash overlap (Å)
1:D:149:ARG:NH1	4:D:2022:HOH:O	2.06	0.80
1:D:137:ASN:OD1	1:D:173:ARG:NH1	2.14	0.79

All (1) symmetry-related close contacts are listed below. The label for Atom-2 includes the symmetry operator and encoded unit-cell translations to be applied.

Atom-1	Atom-2	Interatomic distance (Å)	Clash overlap (Å)
1:C:29:SER:O	1:D:66:TYR:OH[2_445]	2.00	0.20

5.3 Torsion angles [i](#)

5.3.1 Protein backbone [i](#)

In the following table, the Percentiles column shows the percent Ramachandran outliers of the chain as a percentile score with respect to all X-ray entries followed by that with respect to entries of similar resolution.

The Analysed column shows the number of residues for which the backbone conformation was analysed, and the total number of residues.

Mol	Chain	Analysed	Favoured	Allowed	Outliers	Percentiles	
1	A	400/478 (84%)	390 (98%)	10 (2%)	0	100	100
1	B	419/478 (88%)	408 (97%)	11 (3%)	0	100	100
1	C	391/478 (82%)	382 (98%)	9 (2%)	0	100	100
1	D	420/478 (88%)	411 (98%)	7 (2%)	2 (0%)	29	34
All	All	1630/1912 (85%)	1591 (98%)	37 (2%)	2 (0%)	51	64

All (2) Ramachandran outliers are listed below:

Mol	Chain	Res	Type
1	D	113[A]	HIS
1	D	113[B]	HIS

5.3.2 Protein sidechains [i](#)

In the following table, the Percentiles column shows the percent sidechain outliers of the chain as a percentile score with respect to all X-ray entries followed by that with respect to entries of similar resolution.

The Analysed column shows the number of residues for which the sidechain conformation was analysed, and the total number of residues.

Mol	Chain	Analysed	Rotameric	Outliers	Percentiles	
1	A	334/403 (83%)	328 (98%)	6 (2%)	59	71
1	B	355/403 (88%)	352 (99%)	3 (1%)	81	88
1	C	329/403 (82%)	327 (99%)	2 (1%)	86	91
1	D	355/403 (88%)	351 (99%)	4 (1%)	73	82
All	All	1373/1612 (85%)	1358 (99%)	15 (1%)	76	82

5 of 15 residues with a non-rotameric sidechain are listed below:

Mol	Chain	Res	Type
1	B	187	ASP
1	D	326[B]	ASN
1	B	333	ASP
1	D	348	VAL
1	D	157	LEU

Sometimes sidechains can be flipped to improve hydrogen bonding and reduce clashes. 5 of 6 such sidechains are listed below:

Mol	Chain	Res	Type
1	B	177	GLN
1	D	177	GLN
1	D	329	GLN
1	A	177	GLN
1	A	137	ASN

5.3.3 RNA [i](#)

There are no RNA molecules in this entry.

5.4 Non-standard residues in protein, DNA, RNA chains [i](#)

There are no non-standard protein/DNA/RNA residues in this entry.

5.5 Carbohydrates [i](#)

There are no monosaccharides in this entry.

5.6 Ligand geometry [i](#)

Of 13 ligands modelled in this entry, 9 are monoatomic - leaving 4 for Mogul analysis.

In the following table, the Counts columns list the number of bonds (or angles) for which Mogul statistics could be retrieved, the number of bonds (or angles) that are observed in the model and the number of bonds (or angles) that are defined in the Chemical Component Dictionary. The Link column lists molecule types, if any, to which the group is linked. The Z score for a bond length (or angle) is the number of standard deviations the observed value is removed from the expected value. A bond length (or angle) with $|Z| > 2$ is considered an outlier worth inspection. RMSZ is the root-mean-square of all Z scores of the bond lengths (or angles).

Mol	Type	Chain	Res	Link	Bond lengths			Bond angles		
					Counts	RMSZ	# Z > 2	Counts	RMSZ	# Z > 2
2	NAG	B	501	1	14,14,15	1.33	2 (14%)	17,19,21	2.57	6 (35%)
2	NAG	D	501	1	14,14,15	1.04	1 (7%)	17,19,21	3.03	4 (23%)
2	NAG	C	501	1	14,14,15	1.16	1 (7%)	17,19,21	2.93	6 (35%)
2	NAG	A	501	1	14,14,15	1.13	0	17,19,21	2.71	3 (17%)

In the following table, the Chirals column lists the number of chiral outliers, the number of chiral centers analysed, the number of these observed in the model and the number defined in the Chemical Component Dictionary. Similar counts are reported in the Torsion and Rings columns. '-' means no outliers of that kind were identified.

Mol	Type	Chain	Res	Link	Chirals	Torsions	Rings
2	NAG	B	501	1	-	1/6/23/26	0/1/1/1
2	NAG	D	501	1	-	2/6/23/26	0/1/1/1
2	NAG	C	501	1	-	4/6/23/26	0/1/1/1
2	NAG	A	501	1	-	6/6/23/26	0/1/1/1

All (4) bond length outliers are listed below:

Mol	Chain	Res	Type	Atoms	Z	Observed(Å)	Ideal(Å)
2	B	501	NAG	C1-C2	3.25	1.57	1.52
2	C	501	NAG	C1-C2	3.24	1.57	1.52
2	B	501	NAG	C3-C2	-2.53	1.47	1.52
2	D	501	NAG	C3-C2	-2.42	1.47	1.52

The worst 5 of 19 bond angle outliers are listed below:

Mol	Chain	Res	Type	Atoms	Z	Observed(°)	Ideal(°)
2	D	501	NAG	C1-O5-C5	10.22	126.04	112.19
2	A	501	NAG	C1-O5-C5	8.83	124.16	112.19

Continued on next page...

Continued from previous page...

Mol	Chain	Res	Type	Atoms	Z	Observed(°)	Ideal(°)
2	C	501	NAG	C1-O5-C5	7.31	122.10	112.19
2	C	501	NAG	C4-C3-C2	-5.87	102.41	111.02
2	B	501	NAG	C1-O5-C5	5.75	119.98	112.19

There are no chirality outliers.

5 of 13 torsion outliers are listed below:

Mol	Chain	Res	Type	Atoms
2	D	501	NAG	O5-C5-C6-O6
2	A	501	NAG	C8-C7-N2-C2
2	A	501	NAG	O7-C7-N2-C2
2	C	501	NAG	C8-C7-N2-C2
2	A	501	NAG	C4-C5-C6-O6

There are no ring outliers.

1 monomer is involved in 6 short contacts:

Mol	Chain	Res	Type	Clashes	Symm-Clashes
2	B	501	NAG	6	0

5.7 Other polymers [i](#)

There are no such residues in this entry.

5.8 Polymer linkage issues [i](#)

There are no chain breaks in this entry.

6 Fit of model and data [i](#)

6.1 Protein, DNA and RNA chains [i](#)

In the following table, the column labelled ‘#RSRZ > 2’ contains the number (and percentage) of RSRZ outliers, followed by percent RSRZ outliers for the chain as percentile scores relative to all X-ray entries and entries of similar resolution. The OWAB column contains the minimum, median, 95th percentile and maximum values of the occupancy-weighted average B-factor per residue. The column labelled ‘Q < 0.9’ lists the number of (and percentage) of residues with an average occupancy less than 0.9.

Mol	Chain	Analysed	<RSRZ>	#RSRZ>2	OWAB(Å ²)	Q<0.9
1	A	402/478 (84%)	0.27	28 (6%) 16 13	21, 47, 108, 170	2 (0%)
1	B	422/478 (88%)	0.19	30 (7%) 16 12	24, 54, 102, 144	5 (1%)
1	C	399/478 (83%)	0.44	37 (9%) 8 5	31, 54, 113, 167	2 (0%)
1	D	421/478 (88%)	0.32	33 (7%) 13 9	26, 53, 110, 172	5 (1%)
All	All	1644/1912 (85%)	0.31	128 (7%) 13 9	21, 52, 110, 172	14 (0%)

The worst 5 of 128 RSRZ outliers are listed below:

Mol	Chain	Res	Type	RSRZ
1	C	365	ALA	7.6
1	D	346	PRO	7.4
1	B	406	ALA	7.0
1	A	198	ALA	6.9
1	A	196	ALA	6.4

6.2 Non-standard residues in protein, DNA, RNA chains [i](#)

There are no non-standard protein/DNA/RNA residues in this entry.

6.3 Carbohydrates [i](#)

There are no monosaccharides in this entry.

6.4 Ligands [i](#)

In the following table, the Atoms column lists the number of modelled atoms in the group and the number defined in the chemical component dictionary. The B-factors column lists the minimum, median, 95th percentile and maximum values of B factors of atoms in the group. The column labelled ‘Q < 0.9’ lists the number of atoms with occupancy less than 0.9.

Mol	Type	Chain	Res	Atoms	RSCC	RSR	B-factors(\AA^2)	Q<0.9
3	CA	C	503	1/1	0.81	0.08	86,86,86,86	0
2	NAG	A	501	14/15	0.84	0.15	56,67,83,84	0
3	CA	A	502	1/1	0.85	0.08	88,88,88,88	0
2	NAG	B	501	14/15	0.86	0.16	66,73,95,104	0
2	NAG	C	501	14/15	0.86	0.23	88,95,102,111	0
3	CA	B	502	1/1	0.90	0.04	90,90,90,90	0
3	CA	B	503	1/1	0.90	0.05	83,83,83,83	0
2	NAG	D	501	14/15	0.90	0.21	50,71,104,104	0
3	CA	C	504	1/1	0.95	0.15	54,54,54,54	0
3	CA	D	502	1/1	0.95	0.05	77,77,77,77	0
3	CA	D	503	1/1	0.95	0.04	82,82,82,82	0
3	CA	C	502	1/1	0.96	0.06	64,64,64,64	0
3	CA	A	503	1/1	0.97	0.11	49,49,49,49	0

6.5 Other polymers [i](#)

There are no such residues in this entry.