



Full wwPDB X-ray Structure Validation Report ⓘ

Dec 8, 2023 – 05:07 am GMT

PDB ID : 2BNS
Title : Lipidic cubic phase grown reaction centre from Rhodobacter sphaeroides, excited state
Authors : Katona, G.; Snijder, A.; Gourdon, P.; Andreasson, U.; Hansson, O.; Andreasson, L.E.; Neutze, R.
Deposited on : 2005-03-31
Resolution : 2.50 Å(reported)

This is a Full wwPDB X-ray Structure Validation Report for a publicly released PDB entry.

We welcome your comments at validation@mail.wwpdb.org

A user guide is available at

<https://www.wwpdb.org/validation/2017/XrayValidationReportHelp>

with specific help available everywhere you see the ⓘ symbol.

The types of validation reports are described at

<http://www.wwpdb.org/validation/2017/FAQs#types>.

The following versions of software and data (see [references ⓘ](#)) were used in the production of this report:

MolProbity : 4.02b-467
Mogul : 1.8.4, CSD as541be (2020)
Xtriage (Phenix) : 1.13
EDS : 2.36
buster-report : 1.1.7 (2018)
Percentile statistics : 20191225.v01 (using entries in the PDB archive December 25th 2019)
Refmac : 5.8.0158
CCP4 : 7.0.044 (Gargrove)
Ideal geometry (proteins) : Engh & Huber (2001)
Ideal geometry (DNA, RNA) : Parkinson et al. (1996)
Validation Pipeline (wwPDB-VP) : 2.36

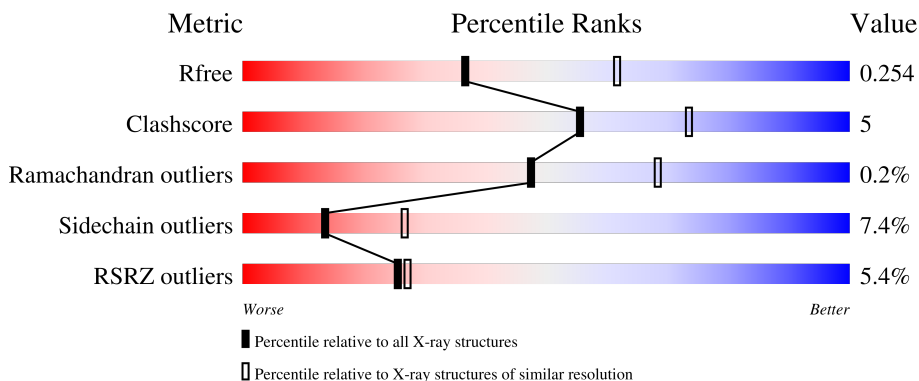
1 Overall quality at a glance

The following experimental techniques were used to determine the structure:

X-RAY DIFFRACTION

The reported resolution of this entry is 2.50 Å.

Percentile scores (ranging between 0-100) for global validation metrics of the entry are shown in the following graphic. The table shows the number of entries on which the scores are based.



Metric	Whole archive (#Entries)	Similar resolution (#Entries, resolution range(Å))
R_{free}	130704	4661 (2.50-2.50)
Clashscore	141614	5346 (2.50-2.50)
Ramachandran outliers	138981	5231 (2.50-2.50)
Sidechain outliers	138945	5233 (2.50-2.50)
RSRZ outliers	127900	4559 (2.50-2.50)

The table below summarises the geometric issues observed across the polymeric chains and their fit to the electron density. The red, orange, yellow and green segments of the lower bar indicate the fraction of residues that contain outliers for ≥ 3 , 2, 1 and 0 types of geometric quality criteria respectively. A grey segment represents the fraction of residues that are not modelled. The numeric value for each fraction is indicated below the corresponding segment, with a dot representing fractions $\leq 5\%$. The upper red bar (where present) indicates the fraction of residues that have poor fit to the electron density. The numeric value is given above the bar.

Mol	Chain	Length	Quality of chain
1	A	281	
2	B	307	
3	C	260	

2 Entry composition [i](#)

There are 11 unique types of molecules in this entry. The entry contains 6965 atoms, of which 0 are hydrogens and 0 are deuteriums.

In the tables below, the ZeroOcc column contains the number of atoms modelled with zero occupancy, the AltConf column contains the number of residues with at least one atom in alternate conformation and the Trace column contains the number of residues modelled with at most 2 atoms.

- Molecule 1 is a protein called Reaction center protein L chain.

Mol	Chain	Residues	Atoms					ZeroOcc	AltConf	Trace
			Total	C	N	O	S			
1	A	281	2232	1507	355	362	8	4	0	0

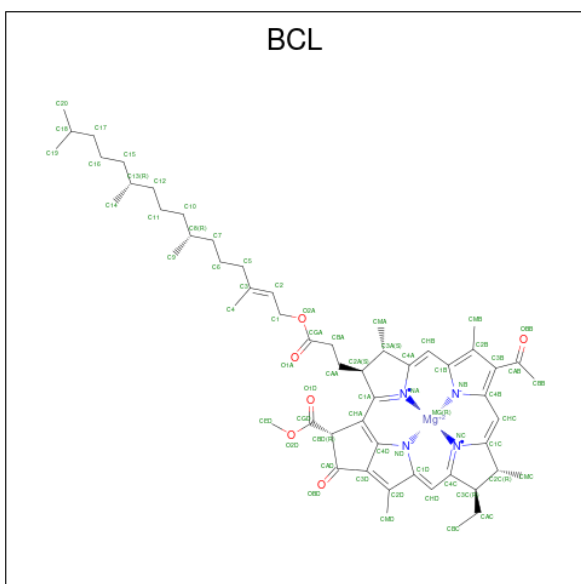
- Molecule 2 is a protein called Reaction center protein M chain.

Mol	Chain	Residues	Atoms					ZeroOcc	AltConf	Trace
			Total	C	N	O	S			
2	B	302	2405	1605	394	396	10	19	0	1

- Molecule 3 is a protein called Reaction center protein H chain.

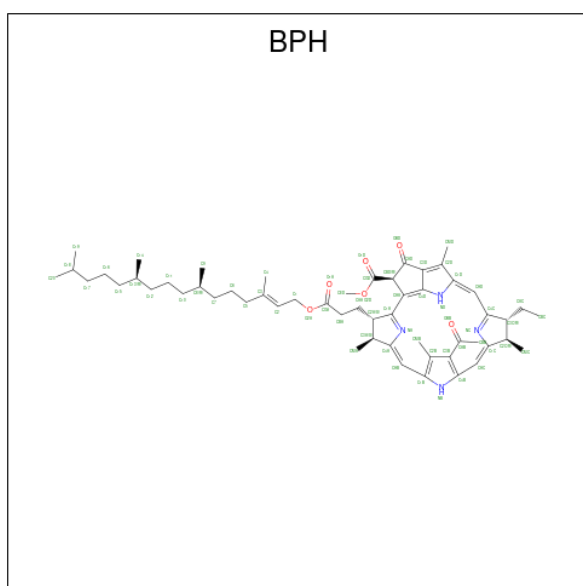
Mol	Chain	Residues	Atoms					ZeroOcc	AltConf	Trace
			Total	C	N	O	S			
3	C	237	1803	1154	307	333	9	31	0	0

- Molecule 4 is BACTERIOCHLOROPHYLL A (three-letter code: BCL) (formula: $C_{55}H_{74}MgN_4O_6$).



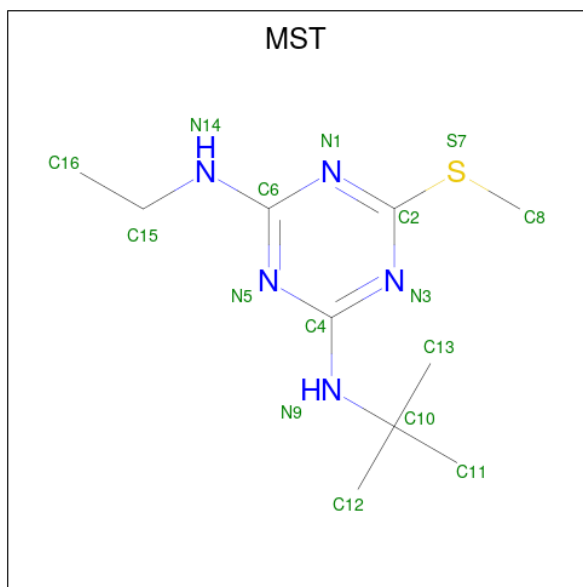
Mol	Chain	Residues	Atoms				ZeroOcc	AltConf	
4	A	1	Total	C	Mg	N	O	0	0
			66	55	1	4	6		
4	A	1	Total	C	Mg	N	O	0	0
			66	55	1	4	6		
4	B	1	Total	C	Mg	N	O	0	0
			51	40	1	4	6		
4	B	1	Total	C	Mg	N	O	0	0
			66	55	1	4	6		

- Molecule 5 is BACTERIOPHEOPHYTIN A (three-letter code: BPH) (formula: $C_{55}H_{76}N_4O_6$).



Mol	Chain	Residues	Atoms				ZeroOcc	AltConf
5	A	1	Total	C	N	O	0	0
			65	55	4	6		
5	B	1	Total	C	N	O	0	0
			51	41	4	6		

- Molecule 6 is 2-T-BUTYLAMINO-4-ETHYLAMINO-6-METHYLTHIO-S-TRIAZINE (three-letter code: MST) (formula: $C_{10}H_{19}N_5S$).

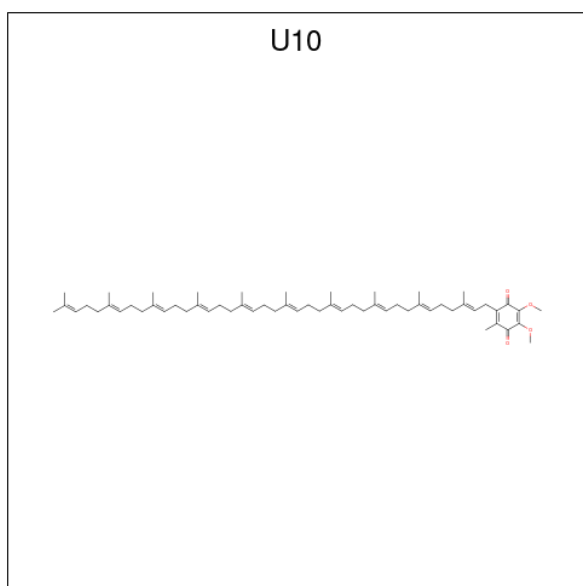


Mol	Chain	Residues	Atoms				ZeroOcc	AltConf
			Total	C	N	S		
6	A	1	16	10	5	1	0	0

- Molecule 7 is FE (II) ION (three-letter code: FE2) (formula: Fe).

Mol	Chain	Residues	Atoms		ZeroOcc	AltConf
			Total	Fe		
7	B	1	1	1	0	0

- Molecule 8 is UBIQUINONE-10 (three-letter code: U10) (formula: C₅₉H₉₀O₄).

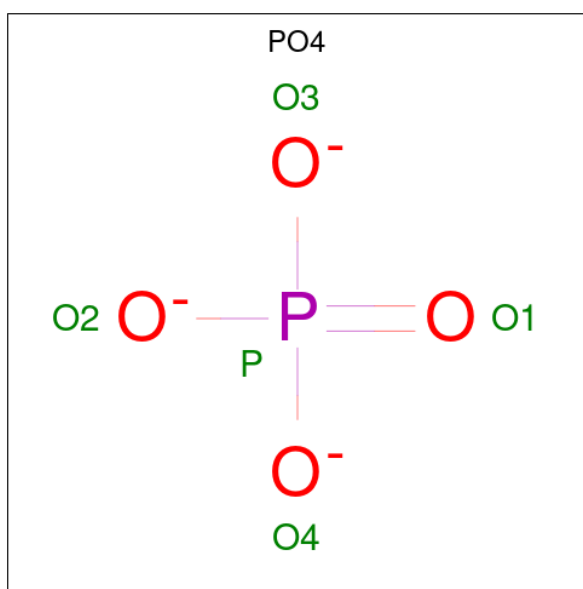


Mol	Chain	Residues	Atoms			ZeroOcc	AltConf
8	B	1	Total	C	O	0	0
			38	34	4		

- Molecule 9 is CHLORIDE ION (three-letter code: CL) (formula: Cl).

Mol	Chain	Residues	Atoms		ZeroOcc	AltConf
9	B	1	Total	Cl	0	0
			1	1		

- Molecule 10 is PHOSPHATE ION (three-letter code: PO4) (formula: O₄P).



Mol	Chain	Residues	Atoms			ZeroOcc	AltConf
10	B	1	Total	O	P	0	0
			5	4	1		
10	B	1	Total	O	P	0	0
			5	4	1		

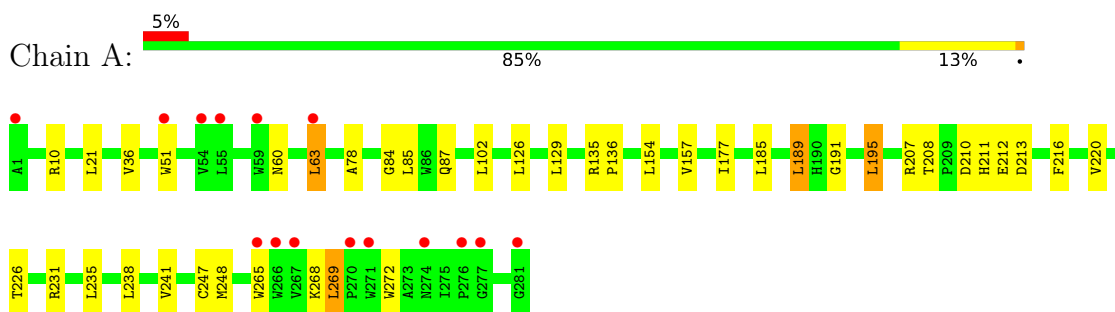
- Molecule 11 is water.

Mol	Chain	Residues	Atoms		ZeroOcc	AltConf
11	A	36	Total	O	0	0
			36	36		
11	B	27	Total	O	0	0
			27	27		
11	C	31	Total	O	0	0
			31	31		

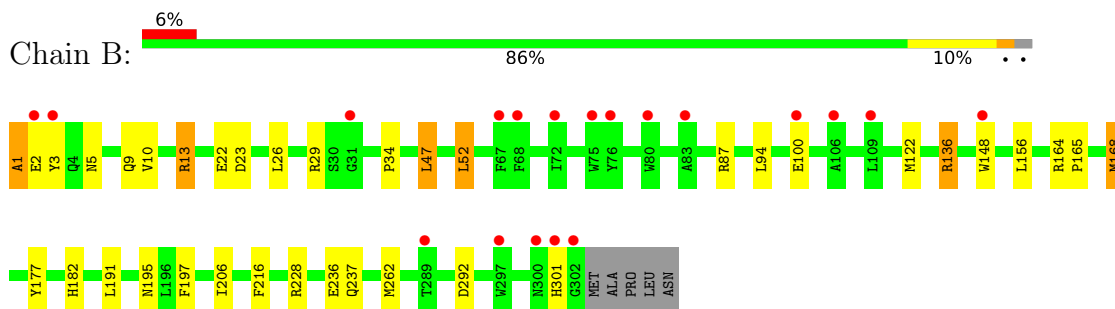
3 Residue-property plots [i](#)

These plots are drawn for all protein, RNA, DNA and oligosaccharide chains in the entry. The first graphic for a chain summarises the proportions of the various outlier classes displayed in the second graphic. The second graphic shows the sequence view annotated by issues in geometry and electron density. Residues are color-coded according to the number of geometric quality criteria for which they contain at least one outlier: green = 0, yellow = 1, orange = 2 and red = 3 or more. A red dot above a residue indicates a poor fit to the electron density ($RSRZ > 2$). Stretches of 2 or more consecutive residues without any outlier are shown as a green connector. Residues present in the sample, but not in the model, are shown in grey.

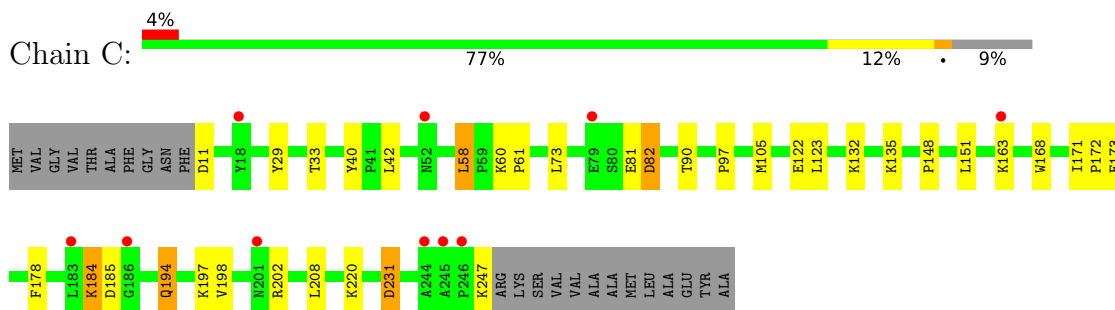
- Molecule 1: Reaction center protein L chain



- Molecule 2: Reaction center protein M chain



- Molecule 3: Reaction center protein H chain



4 Data and refinement statistics

Property	Value	Source
Space group	P 42 21 2	Depositor
Cell constants a, b, c, α , β , γ	100.10Å 100.10Å 237.02Å 90.00° 90.00° 90.00°	Depositor
Resolution (Å)	46.13 – 2.50 46.11 – 2.50	Depositor EDS
% Data completeness (in resolution range)	96.9 (46.13-2.50) 96.9 (46.11-2.50)	Depositor EDS
R_{merge}	0.11	Depositor
R_{sym}	(Not available)	Depositor
$\langle I/\sigma(I) \rangle$ ¹	1.78 (at 2.51Å)	Xtrriage
Refinement program	REFMAC 5.1.24	Depositor
R, R_{free}	0.209 , 0.247 0.234 , 0.254	Depositor DCC
R_{free} test set	2079 reflections (5.04%)	wwPDB-VP
Wilson B-factor (Å ²)	42.0	Xtrriage
Anisotropy	0.053	Xtrriage
Bulk solvent k_{sol} (e/Å ³), B_{sol} (Å ²)	0.42 , 45.5	EDS
L-test for twinning ²	$\langle L \rangle = 0.49$, $\langle L^2 \rangle = 0.32$	Xtrriage
Estimated twinning fraction	No twinning to report.	Xtrriage
F_o, F_c correlation	0.91	EDS
Total number of atoms	6965	wwPDB-VP
Average B, all atoms (Å ²)	31.0	wwPDB-VP

Xtrriage's analysis on translational NCS is as follows: *The largest off-origin peak in the Patterson function is 2.76% of the height of the origin peak. No significant pseudotranslation is detected.*

¹Intensities estimated from amplitudes.

²Theoretical values of $\langle |L| \rangle$, $\langle L^2 \rangle$ for acentric reflections are 0.5, 0.333 respectively for untwinned datasets, and 0.375, 0.2 for perfectly twinned datasets.

5 Model quality [i](#)

5.1 Standard geometry [i](#)

Bond lengths and bond angles in the following residue types are not validated in this section: MST, PO4, U10, FE2, BPH, BCL, CL

The Z score for a bond length (or angle) is the number of standard deviations the observed value is removed from the expected value. A bond length (or angle) with $|Z| > 5$ is considered an outlier worth inspection. RMSZ is the root-mean-square of all Z scores of the bond lengths (or angles).

Mol	Chain	Bond lengths		Bond angles	
		RMSZ	# Z >5	RMSZ	# Z >5
1	A	0.56	0/2320	0.74	3/3175 (0.1%)
2	B	0.62	1/2497 (0.0%)	0.82	8/3410 (0.2%)
3	C	0.83	4/1851 (0.2%)	0.91	7/2520 (0.3%)
All	All	0.67	5/6668 (0.1%)	0.82	18/9105 (0.2%)

Chiral center outliers are detected by calculating the chiral volume of a chiral center and verifying if the center is modelled as a planar moiety or with the opposite hand. A planarity outlier is detected by checking planarity of atoms in a peptide group, atoms in a mainchain group or atoms of a sidechain that are expected to be planar.

Mol	Chain	#Chirality outliers	#Planarity outliers
2	B	0	2

All (5) bond length outliers are listed below:

Mol	Chain	Res	Type	Atoms	Z	Observed(Å)	Ideal(Å)
3	C	135	LYS	CB-CG	22.63	2.13	1.52
2	B	13	ARG	CD-NE	16.00	1.73	1.46
3	C	220	LYS	CG-CD	-12.90	1.08	1.52
3	C	197	LYS	CG-CD	9.39	1.84	1.52
3	C	184	LYS	CB-CG	5.79	1.68	1.52

All (18) bond angle outliers are listed below:

Mol	Chain	Res	Type	Atoms	Z	Observed(°)	Ideal(°)
3	C	247	LYS	CA-CB-CG	-22.28	64.39	113.40
2	B	1	ALA	O-C-N	-15.83	97.37	122.70
2	B	13	ARG	CG-CD-NE	-13.23	84.02	111.80
2	B	52	LEU	CB-CG-CD2	-10.87	92.53	111.00
1	A	268	LYS	CA-CB-CG	10.39	136.26	113.40

Continued on next page...

Continued from previous page...

Mol	Chain	Res	Type	Atoms	Z	Observed(°)	Ideal(°)
2	B	13	ARG	CD-NE-CZ	-10.05	109.53	123.60
3	C	184	LYS	CA-CB-CG	9.17	133.57	113.40
2	B	1	ALA	CA-C-N	8.47	135.84	117.20
2	B	292	ASP	CB-CG-OD2	6.53	124.17	118.30
3	C	82	ASP	CB-CG-OD2	5.55	123.30	118.30
1	A	210	ASP	CB-CG-OD2	5.51	123.26	118.30
1	A	213	ASP	CB-CG-OD2	5.38	123.15	118.30
2	B	1	ALA	C-N-CA	5.35	135.08	121.70
3	C	197	LYS	CB-CG-CD	-5.32	97.78	111.60
3	C	11	ASP	CB-CG-OD2	5.28	123.06	118.30
3	C	231	ASP	CB-CG-OD2	5.11	122.90	118.30
2	B	23	ASP	CB-CG-OD2	5.09	122.88	118.30
3	C	185	ASP	CB-CG-OD2	5.00	122.80	118.30

There are no chirality outliers.

All (2) planarity outliers are listed below:

Mol	Chain	Res	Type	Group
2	B	1	ALA	Mainchain
2	B	13	ARG	Sidechain

5.2 Too-close contacts [i](#)

In the following table, the Non-H and H(model) columns list the number of non-hydrogen atoms and hydrogen atoms in the chain respectively. The H(added) column lists the number of hydrogen atoms added and optimized by MolProbity. The Clashes column lists the number of clashes within the asymmetric unit, whereas Symm-Clashes lists symmetry-related clashes.

Mol	Chain	Non-H	H(model)	H(added)	Clashes	Symm-Clashes
1	A	2232	0	2187	20	0
2	B	2405	0	2318	16	0
3	C	1803	0	1805	18	0
4	A	132	0	146	11	0
4	B	117	0	115	10	0
5	A	65	0	76	6	0
5	B	51	0	45	6	0
6	A	16	0	19	4	0
7	B	1	0	0	0	0
8	B	38	0	47	4	0
9	B	1	0	0	0	0
10	B	10	0	0	0	0

Continued on next page...

Continued from previous page...

Mol	Chain	Non-H	H(model)	H(added)	Clashes	Symm-Clashes
11	A	36	0	0	0	0
11	B	27	0	0	0	0
11	C	31	0	0	0	0
All	All	6965	0	6758	69	0

The all-atom clashscore is defined as the number of clashes found per 1000 atoms (including hydrogen atoms). The all-atom clashscore for this structure is 5.

All (69) close contacts within the same asymmetric unit are listed below, sorted by their clash magnitude.

Atom-1	Atom-2	Interatomic distance (Å)	Clash overlap (Å)
4:B:1302:BCL:HHC	4:B:1302:BCL:HBB3	1.59	0.84
4:A:1282:BCL:NC	4:B:1303:BCL:HBB3	1.98	0.78
1:A:177:ILE:HG12	4:A:1282:BCL:HMB3	1.66	0.77
4:B:1302:BCL:HHC	4:B:1302:BCL:CBB	2.25	0.66
4:A:1283:BCL:HBB3	5:A:1284:BPH:H141	1.79	0.65
2:B:9:GLN:HE22	3:C:198:VAL:H	1.43	0.64
2:B:206:ILE:HG12	4:B:1303:BCL:HMB3	1.80	0.64
1:A:189:LEU:HD13	5:B:1304:BPH:HMD2	1.81	0.62
1:A:189:LEU:CD1	5:B:1304:BPH:HMD2	2.28	0.62
2:B:228:ARG:HA	3:C:194:GLN:HG2	1.85	0.59
2:B:236:GLU:HG3	3:C:122:GLU:CD	2.23	0.59
2:B:136:ARG:NE	2:B:136:ARG:HA	2.18	0.58
2:B:228:ARG:HA	3:C:194:GLN:CG	2.33	0.58
3:C:148:PRO:HA	3:C:151:LEU:HD12	1.86	0.57
4:A:1282:BCL:C1C	4:B:1303:BCL:HBB3	2.34	0.57
4:B:1303:BCL:CBB	4:B:1303:BCL:HHC	2.35	0.56
4:B:1303:BCL:HHC	4:B:1303:BCL:HBB2	1.87	0.56
4:A:1282:BCL:H192	8:B:1306:U10:H252	1.87	0.56
4:A:1283:BCL:HMB1	4:A:1283:BCL:HBB2	1.87	0.55
3:C:40:TYR:HB3	3:C:58:LEU:HD21	1.90	0.54
6:A:1285:MST:N3	6:A:1285:MST:H121	2.23	0.54
2:B:9:GLN:NE2	3:C:198:VAL:H	2.06	0.53
6:A:1285:MST:H121	6:A:1285:MST:H81	1.91	0.53
1:A:84:GLY:HA2	1:A:87:GLN:HE21	1.73	0.52
3:C:171:ILE:HB	3:C:172:PRO:HD3	1.92	0.51
8:B:1306:U10:H1M1	8:B:1306:U10:H8	1.93	0.50
1:A:78:ALA:H	1:A:87:GLN:HE22	1.58	0.50
8:B:1306:U10:C3M	8:B:1306:U10:H4M2	2.43	0.49
1:A:226:THR:HG23	3:C:173:GLU:OE2	2.12	0.48
1:A:208:THR:H	1:A:211:HIS:CD2	2.32	0.48

Continued on next page...

Continued from previous page...

Atom-1	Atom-2	Interatomic distance (Å)	Clash overlap (Å)
1:A:216:PHE:CE2	6:A:1285:MST:H132	2.49	0.48
5:B:1304:BPH:HBB3	5:B:1304:BPH:CMB	2.45	0.47
1:A:135:ARG:HB3	1:A:136:PRO:HD3	1.96	0.47
4:A:1282:BCL:OBB	4:A:1282:BCL:HHC	2.15	0.47
5:A:1284:BPH:HBB3	5:A:1284:BPH:CMB	2.44	0.47
3:C:40:TYR:CE2	3:C:42:LEU:HD21	2.50	0.46
3:C:168:TRP:HB2	3:C:178:PHE:HB2	1.97	0.46
4:A:1283:BCL:HBA1	4:A:1283:BCL:C4A	2.46	0.45
1:A:185:LEU:HD13	5:B:1304:BPH:ND	2.32	0.45
1:A:208:THR:H	1:A:211:HIS:HD2	1.64	0.45
5:B:1304:BPH:HBB3	5:B:1304:BPH:HMB3	1.99	0.45
1:A:157:VAL:HG11	4:B:1303:BCL:HBB1	1.98	0.44
5:B:1304:BPH:ND	5:B:1304:BPH:NC	2.65	0.44
1:A:231:ARG:HD2	2:B:5:ASN:O	2.17	0.44
2:B:122:MET:HE2	2:B:177:TYR:OH	2.17	0.44
1:A:265:TRP:O	1:A:269:LEU:HD13	2.18	0.44
5:A:1284:BPH:HBB3	5:A:1284:BPH:HMB3	2.00	0.44
1:A:241:VAL:HG21	5:A:1284:BPH:HBC3	2.00	0.44
2:B:237:GLN:HB2	2:B:262:MET:HG2	1.99	0.44
1:A:191:GLY:O	1:A:195:LEU:HB2	2.18	0.43
3:C:90:THR:O	3:C:90:THR:HG22	2.18	0.43
2:B:34:PRO:O	2:B:47:LEU:HB2	2.19	0.43
2:B:197:PHE:CZ	4:B:1303:BCL:HBB2	2.53	0.43
2:B:168:MET:CE	2:B:168:MET:HA	2.49	0.43
4:A:1282:BCL:H52	5:A:1284:BPH:HBB2	2.01	0.43
1:A:212:GLU:HB3	6:A:1285:MST:H161	2.01	0.43
2:B:236:GLU:HG3	3:C:122:GLU:CG	2.49	0.42
2:B:9:GLN:HE22	3:C:198:VAL:N	2.13	0.42
8:B:1306:U10:H1M1	8:B:1306:U10:C8	2.48	0.42
4:A:1282:BCL:H2C	4:B:1303:BCL:H2C	2.02	0.41
2:B:164:ARG:HB3	2:B:165:PRO:HD3	2.01	0.41
3:C:60:LYS:HA	3:C:61:PRO:HD3	1.90	0.41
3:C:29:TYR:O	3:C:33:THR:HG23	2.20	0.41
3:C:132:LYS:HD2	3:C:171:ILE:HD11	2.01	0.41
3:C:90:THR:HB	3:C:97:PRO:O	2.21	0.41
1:A:154:LEU:HD11	4:A:1283:BCL:HED3	2.04	0.40
5:A:1284:BPH:NC	5:A:1284:BPH:ND	2.69	0.40
1:A:60:ASN:HB3	1:A:63:LEU:HD23	2.03	0.40
1:A:135:ARG:HD2	1:A:248:MET:O	2.22	0.40

There are no symmetry-related clashes.

5.3 Torsion angles [i](#)

5.3.1 Protein backbone [i](#)

In the following table, the Percentiles column shows the percent Ramachandran outliers of the chain as a percentile score with respect to all X-ray entries followed by that with respect to entries of similar resolution.

The Analysed column shows the number of residues for which the backbone conformation was analysed, and the total number of residues.

Mol	Chain	Analysed	Favoured	Allowed	Outliers	Percentiles	
1	A	279/281 (99%)	269 (96%)	10 (4%)	0	100	100
2	B	300/307 (98%)	290 (97%)	8 (3%)	2 (1%)	22	39
3	C	235/260 (90%)	228 (97%)	7 (3%)	0	100	100
All	All	814/848 (96%)	787 (97%)	25 (3%)	2 (0%)	47	68

All (2) Ramachandran outliers are listed below:

Mol	Chain	Res	Type
2	B	2	GLU
2	B	301	HIS

5.3.2 Protein sidechains [i](#)

In the following table, the Percentiles column shows the percent sidechain outliers of the chain as a percentile score with respect to all X-ray entries followed by that with respect to entries of similar resolution.

The Analysed column shows the number of residues for which the sidechain conformation was analysed, and the total number of residues.

Mol	Chain	Analysed	Rotameric	Outliers	Percentiles	
1	A	220/220 (100%)	202 (92%)	18 (8%)	11	22
2	B	236/240 (98%)	218 (92%)	18 (8%)	13	25
3	C	192/208 (92%)	180 (94%)	12 (6%)	18	34
All	All	648/668 (97%)	600 (93%)	48 (7%)	13	27

All (48) residues with a non-rotameric sidechain are listed below:

Mol	Chain	Res	Type
1	A	10	ARG

Continued on next page...

Continued from previous page...

Mol	Chain	Res	Type
1	A	21	LEU
1	A	36	VAL
1	A	51	TRP
1	A	63	LEU
1	A	85	LEU
1	A	102	LEU
1	A	126	LEU
1	A	129	LEU
1	A	189	LEU
1	A	195	LEU
1	A	207	ARG
1	A	220	VAL
1	A	235	LEU
1	A	238	LEU
1	A	247	CYS
1	A	269	LEU
1	A	272	TRP
2	B	3	TYR
2	B	10	VAL
2	B	22	GLU
2	B	26	LEU
2	B	29	ARG
2	B	47	LEU
2	B	52	LEU
2	B	87	ARG
2	B	94	LEU
2	B	100	GLU
2	B	136	ARG
2	B	148	TRP
2	B	156	LEU
2	B	168	MET
2	B	182	HIS
2	B	191	LEU
2	B	195	ASN
2	B	216	PHE
3	C	58	LEU
3	C	73	LEU
3	C	81	GLU
3	C	82	ASP
3	C	105	MET
3	C	123	LEU
3	C	163	LYS

Continued on next page...

Continued from previous page...

Mol	Chain	Res	Type
3	C	184	LYS
3	C	194	GLN
3	C	202	ARG
3	C	208	LEU
3	C	231	ASP

Sometimes sidechains can be flipped to improve hydrogen bonding and reduce clashes. All (5) such sidechains are listed below:

Mol	Chain	Res	Type
1	A	87	GLN
1	A	211	HIS
2	B	9	GLN
2	B	195	ASN
3	C	194	GLN

5.3.3 RNA [i](#)

There are no RNA molecules in this entry.

5.4 Non-standard residues in protein, DNA, RNA chains [i](#)

There are no non-standard protein/DNA/RNA residues in this entry.

5.5 Carbohydrates [i](#)

There are no monosaccharides in this entry.

5.6 Ligand geometry [i](#)

Of 12 ligands modelled in this entry, 2 are monoatomic - leaving 10 for Mogul analysis.

In the following table, the Counts columns list the number of bonds (or angles) for which Mogul statistics could be retrieved, the number of bonds (or angles) that are observed in the model and the number of bonds (or angles) that are defined in the Chemical Component Dictionary. The Link column lists molecule types, if any, to which the group is linked. The Z score for a bond length (or angle) is the number of standard deviations the observed value is removed from the expected value. A bond length (or angle) with $|Z| > 2$ is considered an outlier worth inspection. RMSZ is the root-mean-square of all Z scores of the bond lengths (or angles).

Mol	Type	Chain	Res	Link	Bond lengths			Bond angles		
					Counts	RMSZ	# Z > 2	Counts	RMSZ	# Z > 2
5	BPH	A	1284	-	51,70,70	1.44	5 (9%)	52,101,101	1.61	9 (17%)
4	BCL	A	1283	1	64,74,74	2.10	10 (15%)	78,115,115	2.29	24 (30%)
4	BCL	B	1303	2	64,74,74	1.76	8 (12%)	78,115,115	2.14	20 (25%)
5	BPH	B	1304	-	37,56,70	1.73	5 (13%)	35,84,101	2.04	9 (25%)
4	BCL	B	1302	2	49,59,74	1.78	13 (26%)	60,97,115	2.31	21 (35%)
8	U10	B	1306	-	38,38,63	2.62	12 (31%)	46,49,79	1.32	5 (10%)
6	MST	A	1285	-	16,16,16	2.61	3 (18%)	22,22,22	3.51	8 (36%)
10	PO4	B	1308	-	4,4,4	1.80	2 (50%)	6,6,6	1.00	0
10	PO4	B	1309	-	4,4,4	1.08	0	6,6,6	0.56	0
4	BCL	A	1282	1	64,74,74	1.71	10 (15%)	78,115,115	2.10	20 (25%)

In the following table, the Chirals column lists the number of chiral outliers, the number of chiral centers analysed, the number of these observed in the model and the number defined in the Chemical Component Dictionary. Similar counts are reported in the Torsion and Rings columns. '-' means no outliers of that kind were identified.

Mol	Type	Chain	Res	Link	Chirals	Torsions	Rings
5	BPH	A	1284	-	-	6/37/105/105	0/5/6/6
4	BCL	A	1283	1	-	6/37/137/137	-
4	BCL	B	1303	2	-	10/37/137/137	-
5	BPH	B	1304	-	-	6/21/89/105	0/5/6/6
4	BCL	B	1302	2	-	3/19/119/137	-
8	U10	B	1306	-	-	4/33/57/87	0/1/1/1
6	MST	A	1285	-	-	6/10/10/10	0/1/1/1
4	BCL	A	1282	1	-	6/37/137/137	-

All (68) bond length outliers are listed below:

Mol	Chain	Res	Type	Atoms	Z	Observed(Å)	Ideal(Å)
4	A	1283	BCL	MG-NC	-10.33	1.81	2.06
6	A	1285	MST	C2-S7	-9.47	1.67	1.75
4	B	1303	BCL	MG-NC	-8.42	1.86	2.06
4	A	1282	BCL	MG-NA	-6.51	1.90	2.06
8	B	1306	U10	C18-C19	6.07	1.47	1.33
8	B	1306	U10	C8-C9	5.90	1.47	1.33
8	B	1306	U10	C23-C24	5.85	1.47	1.33
8	B	1306	U10	C13-C14	5.81	1.46	1.33
8	B	1306	U10	C28-C29	5.52	1.48	1.32

Continued on next page...

Continued from previous page...

Mol	Chain	Res	Type	Atoms	Z	Observed(Å)	Ideal(Å)
5	A	1284	BPH	OBD-CAD	5.50	1.30	1.22
5	B	1304	BPH	OBD-CAD	5.37	1.29	1.22
5	B	1304	BPH	O2D-CGD	5.32	1.46	1.33
4	A	1283	BCL	C3D-C4D	-5.16	1.32	1.44
4	A	1282	BCL	O2D-CGD	5.09	1.45	1.33
4	A	1283	BCL	O2D-CGD	5.02	1.45	1.33
4	A	1282	BCL	C3D-C4D	-4.96	1.33	1.44
8	B	1306	U10	O3-C3	-4.91	1.24	1.36
5	A	1284	BPH	O2D-CGD	4.73	1.44	1.33
8	B	1306	U10	O4-C4	-4.72	1.25	1.36
4	A	1283	BCL	O2A-CGA	4.72	1.47	1.33
4	B	1302	BCL	C3D-C4D	-4.68	1.33	1.44
4	B	1303	BCL	O2D-CGD	4.62	1.44	1.33
4	B	1302	BCL	O2A-CGA	4.45	1.46	1.33
4	B	1302	BCL	O2D-CGD	4.43	1.44	1.33
4	B	1303	BCL	O2A-CGA	4.37	1.46	1.33
4	B	1303	BCL	C3D-C4D	-4.28	1.34	1.44
4	B	1302	BCL	MG-NC	-4.12	1.96	2.06
5	B	1304	BPH	O2A-CGA	4.11	1.45	1.33
4	A	1282	BCL	C3C-C4C	-4.10	1.46	1.51
4	A	1283	BCL	MG-ND	-4.09	1.97	2.05
4	A	1282	BCL	O2A-CGA	4.05	1.45	1.33
5	A	1284	BPH	O2A-CGA	3.88	1.44	1.33
4	A	1283	BCL	C3C-C4C	-3.79	1.46	1.51
4	A	1283	BCL	OBD-CAD	3.66	1.28	1.22
5	A	1284	BPH	C3A-C2A	-3.64	1.51	1.54
4	B	1303	BCL	C3C-C4C	-3.63	1.47	1.51
4	B	1302	BCL	C4B-NB	3.39	1.38	1.35
4	B	1303	BCL	OBD-CAD	3.35	1.28	1.22
4	A	1283	BCL	C4D-ND	-3.30	1.33	1.37
4	B	1302	BCL	OBD-CAD	3.27	1.28	1.22
5	B	1304	BPH	C3A-C2A	-3.19	1.51	1.54
8	B	1306	U10	C6-C1	3.05	1.40	1.35
8	B	1306	U10	C3-C2	-3.04	1.40	1.48
4	A	1282	BCL	C4D-ND	-2.89	1.33	1.37
8	B	1306	U10	C4-C5	-2.81	1.40	1.48
6	A	1285	MST	C10-N9	2.81	1.53	1.48
4	B	1302	BCL	C3C-C4C	-2.76	1.48	1.51
4	A	1282	BCL	C4D-CHA	2.72	1.48	1.38
5	A	1284	BPH	CHA-CBD	-2.71	1.49	1.52
4	A	1282	BCL	OBD-CAD	2.68	1.27	1.22
4	B	1303	BCL	C4D-CHA	2.66	1.47	1.38

Continued on next page...

Continued from previous page...

Mol	Chain	Res	Type	Atoms	Z	Observed(Å)	Ideal(Å)
5	B	1304	BPH	C2C-C3C	-2.58	1.52	1.54
4	A	1282	BCL	MG-ND	2.56	2.10	2.05
4	A	1282	BCL	C2A-C1A	-2.44	1.46	1.52
4	B	1302	BCL	C2A-C1A	-2.41	1.46	1.52
4	B	1302	BCL	C4D-CHA	2.36	1.46	1.38
4	B	1302	BCL	C1D-C2D	-2.31	1.40	1.45
4	A	1283	BCL	C2A-C1A	-2.31	1.47	1.52
8	B	1306	U10	C1-C2	-2.24	1.39	1.47
4	A	1283	BCL	C1D-C2D	-2.24	1.40	1.45
4	B	1303	BCL	C4D-ND	-2.19	1.34	1.37
10	B	1308	PO4	P-O3	-2.18	1.48	1.54
8	B	1306	U10	C6-C5	-2.16	1.40	1.46
4	B	1302	BCL	C4D-ND	-2.10	1.34	1.37
4	B	1302	BCL	MG-ND	-2.10	2.01	2.05
10	B	1308	PO4	P-O2	-2.06	1.48	1.54
4	B	1302	BCL	C1B-NB	2.04	1.37	1.35
6	A	1285	MST	C4-N9	2.04	1.37	1.34

All (116) bond angle outliers are listed below:

Mol	Chain	Res	Type	Atoms	Z	Observed(°)	Ideal(°)
6	A	1285	MST	C2-N3-C4	12.32	120.79	113.85
4	B	1302	BCL	C1C-NC-C4C	-7.88	103.16	106.71
5	B	1304	BPH	O2D-CGD-CBD	7.76	120.83	111.00
4	B	1303	BCL	C1C-NC-C4C	-7.67	103.26	106.71
4	A	1283	BCL	C1D-ND-C4D	-7.36	101.11	106.33
4	A	1283	BCL	C1C-NC-C4C	-6.94	103.58	106.71
4	B	1302	BCL	C1D-ND-C4D	-6.83	101.48	106.33
5	A	1284	BPH	O2D-CGD-CBD	6.33	119.02	111.00
6	A	1285	MST	N5-C4-N3	-6.25	116.36	126.23
4	B	1303	BCL	C1D-ND-C4D	-6.10	102.00	106.33
4	A	1282	BCL	CMB-C2B-C1B	-6.09	119.11	128.46
4	A	1283	BCL	C4A-NA-C1A	-5.72	104.13	106.71
4	A	1282	BCL	C4A-NA-C1A	-5.70	104.14	106.71
4	A	1282	BCL	C1C-NC-C4C	-5.62	104.18	106.71
4	A	1283	BCL	CMB-C2B-C1B	-5.37	120.22	128.46
4	B	1302	BCL	CMB-C2B-C1B	-5.34	120.26	128.46
4	A	1282	BCL	CMB-C2B-C3B	5.21	134.42	124.68
4	B	1302	BCL	C4A-NA-C1A	-4.72	104.58	106.71
6	A	1285	MST	C6-N5-C4	4.61	121.71	113.89
4	B	1303	BCL	CMB-C2B-C1B	-4.59	121.40	128.46
4	A	1282	BCL	C1D-ND-C4D	-4.58	103.08	106.33

Continued on next page...

Continued from previous page...

Mol	Chain	Res	Type	Atoms	Z	Observed(°)	Ideal(°)
4	B	1303	BCL	CHC-C1C-NC	4.40	130.59	124.51
4	A	1283	BCL	C2C-C3C-C4C	4.26	107.72	101.34
4	A	1283	BCL	CMB-C2B-C3B	4.09	132.34	124.68
4	A	1282	BCL	CHD-C1D-ND	-4.07	120.72	124.45
6	A	1285	MST	C2-N1-C6	3.95	116.08	113.85
4	B	1303	BCL	CHD-C1D-ND	-3.93	120.84	124.45
4	B	1303	BCL	O2D-CGD-CBD	3.91	118.22	111.27
4	A	1283	BCL	CAC-C3C-C2C	-3.88	104.56	114.26
5	B	1304	BPH	O1D-CGD-CBD	-3.77	118.46	124.74
4	A	1283	BCL	C3D-C4D-ND	3.77	116.34	110.24
4	A	1282	BCL	CAC-C3C-C4C	-3.74	104.29	112.58
4	B	1303	BCL	O2D-CGD-O1D	-3.74	116.53	123.84
4	A	1283	BCL	O2D-CGD-CBD	3.69	117.83	111.27
4	B	1302	BCL	CMB-C2B-C3B	3.66	131.53	124.68
4	B	1302	BCL	O2D-CGD-CBD	3.59	117.65	111.27
4	B	1302	BCL	C3D-C4D-ND	3.52	115.92	110.24
4	B	1303	BCL	C3D-C4D-ND	3.43	115.79	110.24
4	B	1303	BCL	CMB-C2B-C3B	3.41	131.06	124.68
8	B	1306	U10	C25-C24-C26	3.39	120.98	115.27
5	B	1304	BPH	CED-O2D-CGD	3.36	123.53	115.94
6	A	1285	MST	N5-C6-N1	-3.35	120.93	126.23
4	B	1302	BCL	C1-O2A-CGA	3.35	125.23	116.44
4	A	1282	BCL	C2A-C3A-C4A	3.33	107.25	101.87
4	B	1303	BCL	CED-O2D-CGD	3.30	123.39	115.94
4	B	1303	BCL	C4A-NA-C1A	-3.24	105.25	106.71
4	A	1283	BCL	C4B-CHC-C1C	-3.24	123.70	130.12
4	B	1303	BCL	CAC-C3C-C2C	-3.24	106.16	114.26
5	A	1284	BPH	O2D-CGD-O1D	-3.21	117.57	123.84
4	B	1303	BCL	C1D-CHD-C4C	-3.14	119.04	126.62
4	A	1283	BCL	C2A-C3A-C4A	3.13	106.93	101.87
4	B	1302	BCL	C1B-CHB-C4A	-3.08	124.02	130.12
4	A	1283	BCL	C4D-CHA-C1A	-3.07	117.51	121.25
4	A	1282	BCL	CED-O2D-CGD	3.04	122.82	115.94
4	A	1283	BCL	CHD-C1D-ND	-3.03	121.67	124.45
6	A	1285	MST	N14-C6-N5	3.01	122.39	117.19
4	A	1282	BCL	C2C-C3C-C4C	2.94	105.75	101.34
4	B	1303	BCL	O2A-CGA-CBA	2.92	121.07	111.91
4	A	1282	BCL	CHA-C1A-NA	-2.91	119.73	126.40
4	B	1303	BCL	C3C-C2C-C1C	2.91	106.56	101.87
4	A	1282	BCL	C4B-C3B-CAB	-2.89	121.54	127.13
4	B	1302	BCL	O2A-CGA-CBA	2.89	120.97	111.91
5	A	1284	BPH	C4C-C3C-C2C	-2.85	100.12	102.84

Continued on next page...

Continued from previous page...

Mol	Chain	Res	Type	Atoms	Z	Observed(°)	Ideal(°)
5	A	1284	BPH	CMA-C3A-C4A	-2.82	108.21	114.38
4	B	1302	BCL	C4D-C3D-CAD	2.79	111.39	108.10
4	A	1283	BCL	CAA-C2A-C3A	-2.77	105.18	112.78
5	B	1304	BPH	CMA-C3A-C4A	-2.77	108.31	114.38
4	A	1283	BCL	C4D-C3D-CAD	2.76	111.34	108.10
4	A	1282	BCL	CAA-C2A-C3A	-2.75	105.26	112.78
4	A	1282	BCL	C4-C3-C5	2.72	119.85	115.27
4	A	1283	BCL	CHA-C1A-NA	-2.71	120.20	126.40
5	B	1304	BPH	C4-C3-C5	2.63	118.99	115.98
4	B	1303	BCL	C2A-C3A-C4A	2.60	106.07	101.87
4	A	1282	BCL	C3D-C4D-ND	2.59	114.42	110.24
5	A	1284	BPH	O2A-CGA-CBA	2.57	119.98	111.91
4	B	1303	BCL	CHA-C1A-NA	-2.56	120.55	126.40
4	A	1283	BCL	O1D-CGD-CBD	-2.54	119.28	124.48
4	B	1302	BCL	C1D-CHD-C4C	-2.53	120.52	126.62
5	B	1304	BPH	C1-O2A-CGA	2.53	123.07	116.44
4	A	1282	BCL	O2A-CGA-CBA	2.52	119.81	111.91
4	B	1303	BCL	C4D-C3D-CAD	2.51	111.06	108.10
5	B	1304	BPH	C1A-C2A-C3A	-2.50	100.46	102.84
8	B	1306	U10	C17-C18-C19	-2.48	121.68	127.66
4	A	1283	BCL	CAA-CBA-CGA	2.46	120.44	113.25
4	A	1283	BCL	CAC-C3C-C4C	-2.45	107.14	112.58
6	A	1285	MST	N9-C4-N5	2.42	124.58	117.52
4	A	1282	BCL	C4B-CHC-C1C	-2.39	125.38	130.12
5	A	1284	BPH	C7-C6-C5	-2.35	106.98	113.36
4	B	1302	BCL	C4D-CHA-C1A	-2.34	118.40	121.25
4	B	1302	BCL	CHA-C1A-NA	-2.34	121.05	126.40
4	B	1302	BCL	O2A-CGA-O1A	-2.33	117.70	123.59
5	A	1284	BPH	C1A-C2A-C3A	-2.33	100.62	102.84
4	B	1302	BCL	C2A-C3A-C4A	2.32	105.62	101.87
8	B	1306	U10	C31-C29-C30	2.27	119.62	114.60
4	A	1282	BCL	C20-C18-C19	2.25	120.90	110.51
5	A	1284	BPH	O2A-CGA-O1A	-2.24	117.93	123.59
4	A	1283	BCL	C1D-CHD-C4C	-2.24	121.23	126.62
5	B	1304	BPH	C4B-NB-C1B	-2.22	102.54	107.09
4	B	1302	BCL	C3D-C4D-CHA	-2.21	107.66	112.72
4	A	1283	BCL	CHB-C4A-NA	2.20	127.56	124.51
5	A	1284	BPH	C1-C2-C3	-2.19	122.26	126.04
4	B	1302	BCL	O2D-CGD-O1D	-2.18	119.58	123.84
6	A	1285	MST	C8-S7-C2	-2.16	100.66	102.27
4	B	1303	BCL	CGD-CBD-CAD	-2.13	103.85	110.73
4	A	1283	BCL	O2A-CGA-O1A	-2.12	118.24	123.59

Continued on next page...

Continued from previous page...

Mol	Chain	Res	Type	Atoms	Z	Observed(°)	Ideal(°)
8	B	1306	U10	C10-C9-C11	2.10	118.81	115.27
8	B	1306	U10	O5-C5-C6	-2.09	117.88	121.55
4	B	1302	BCL	C2C-C3C-C4C	2.09	104.47	101.34
4	B	1303	BCL	C4B-CHC-C1C	-2.08	126.00	130.12
4	B	1302	BCL	C3A-C2A-C1A	2.08	104.45	101.34
4	A	1282	BCL	C1D-CHD-C4C	-2.07	121.62	126.62
4	A	1283	BCL	C1B-CHB-C4A	-2.07	126.01	130.12
4	B	1302	BCL	CAA-C2A-C3A	-2.06	107.13	112.78
4	A	1282	BCL	CMD-C2D-C1D	2.02	128.28	124.71
4	A	1283	BCL	C20-C18-C19	2.02	119.83	110.51
5	B	1304	BPH	C4C-C3C-C2C	-2.02	100.92	102.84

There are no chirality outliers.

All (47) torsion outliers are listed below:

Mol	Chain	Res	Type	Atoms
5	B	1304	BPH	C4C-C3C-CAC-CBC
5	B	1304	BPH	C2C-C3C-CAC-CBC
6	A	1285	MST	C11-C10-N9-C4
6	A	1285	MST	C12-C10-N9-C4
6	A	1285	MST	N1-C6-N14-C15
6	A	1285	MST	N5-C6-N14-C15
4	B	1303	BCL	C3-C5-C6-C7
4	A	1283	BCL	CBD-CGD-O2D-CED
8	B	1306	U10	C27-C28-C29-C30
4	B	1303	BCL	C12-C13-C15-C16
4	B	1303	BCL	C15-C16-C17-C18
4	A	1283	BCL	O1D-CGD-O2D-CED
8	B	1306	U10	C27-C28-C29-C31
4	A	1282	BCL	C16-C17-C18-C20
4	A	1282	BCL	C2A-CAA-CBA-CGA
4	B	1303	BCL	C16-C17-C18-C19
4	A	1282	BCL	C15-C16-C17-C18
4	B	1303	BCL	C16-C17-C18-C20
5	A	1284	BPH	C4-C3-C5-C6
5	A	1284	BPH	C8-C10-C11-C12
5	A	1284	BPH	O2A-C1-C2-C3
4	B	1303	BCL	C6-C7-C8-C10
6	A	1285	MST	C13-C10-N9-C4
4	B	1302	BCL	CAD-CBD-CGD-O2D
5	A	1284	BPH	CAD-CBD-CGD-O2D
5	B	1304	BPH	CAD-CBD-CGD-O2D

Continued on next page...

Continued from previous page...

Mol	Chain	Res	Type	Atoms
4	B	1302	BCL	CHA-CBD-CGD-O1D
5	A	1284	BPH	C2-C3-C5-C6
4	B	1303	BCL	C6-C7-C8-C9
5	B	1304	BPH	C2-C3-C5-C6
4	B	1303	BCL	C14-C13-C15-C16
8	B	1306	U10	C5-C6-C7-C8
4	A	1282	BCL	C12-C13-C15-C16
5	B	1304	BPH	C4-C3-C5-C6
4	B	1302	BCL	C2A-CAA-CBA-CGA
8	B	1306	U10	C5-C4-O4-C4M
4	A	1283	BCL	C16-C17-C18-C19
4	A	1282	BCL	C14-C13-C15-C16
4	A	1282	BCL	CAD-CBD-CGD-O2D
4	B	1303	BCL	CAD-CBD-CGD-O2D
6	A	1285	MST	C16-C15-N14-C6
5	B	1304	BPH	O2A-C1-C2-C3
4	B	1303	BCL	CAA-CBA-CGA-O2A
4	A	1283	BCL	CHA-CBD-CGD-O2D
5	A	1284	BPH	CHA-CBD-CGD-O1D
4	A	1283	BCL	C13-C15-C16-C17
4	A	1283	BCL	C2A-CAA-CBA-CGA

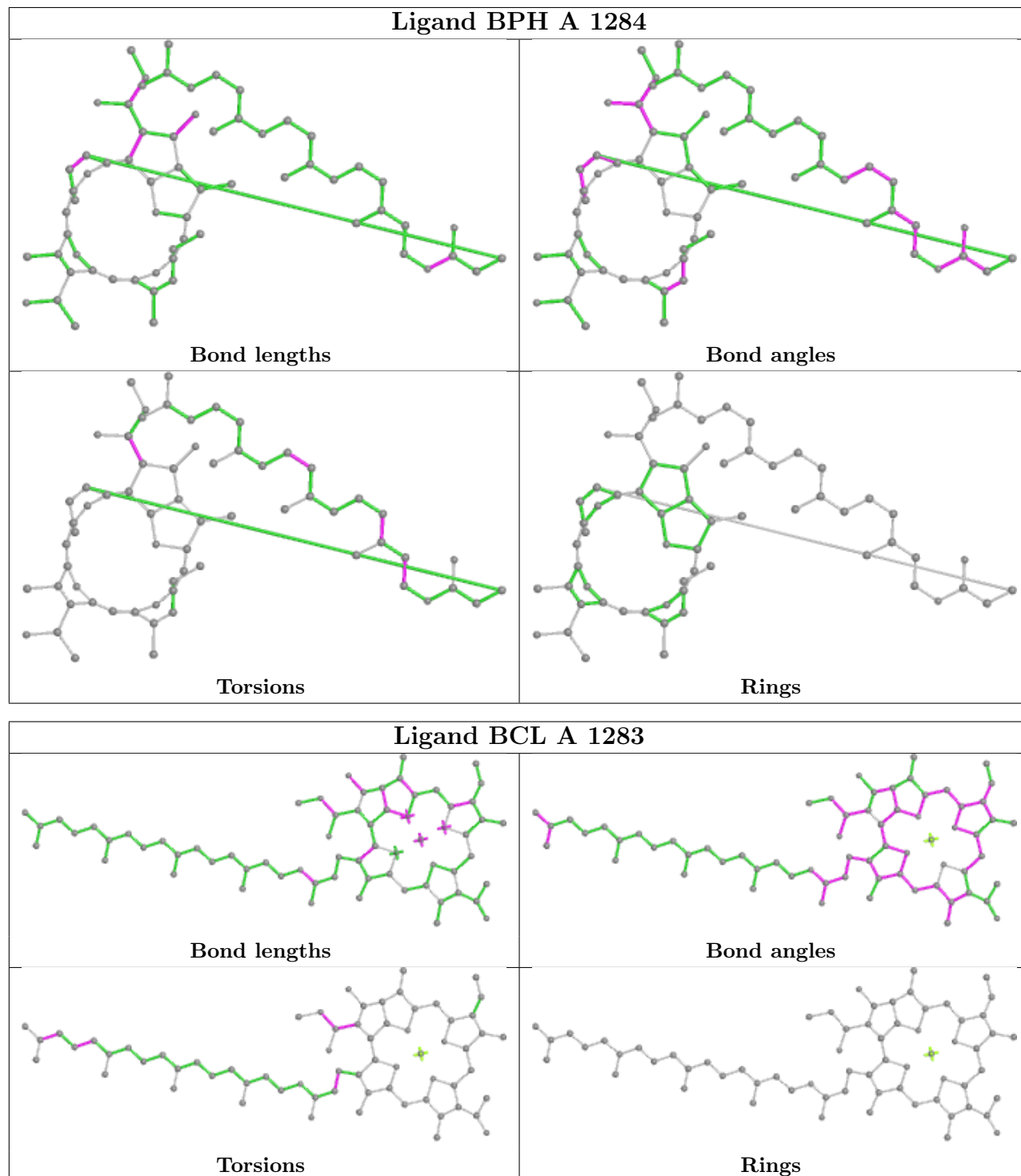
There are no ring outliers.

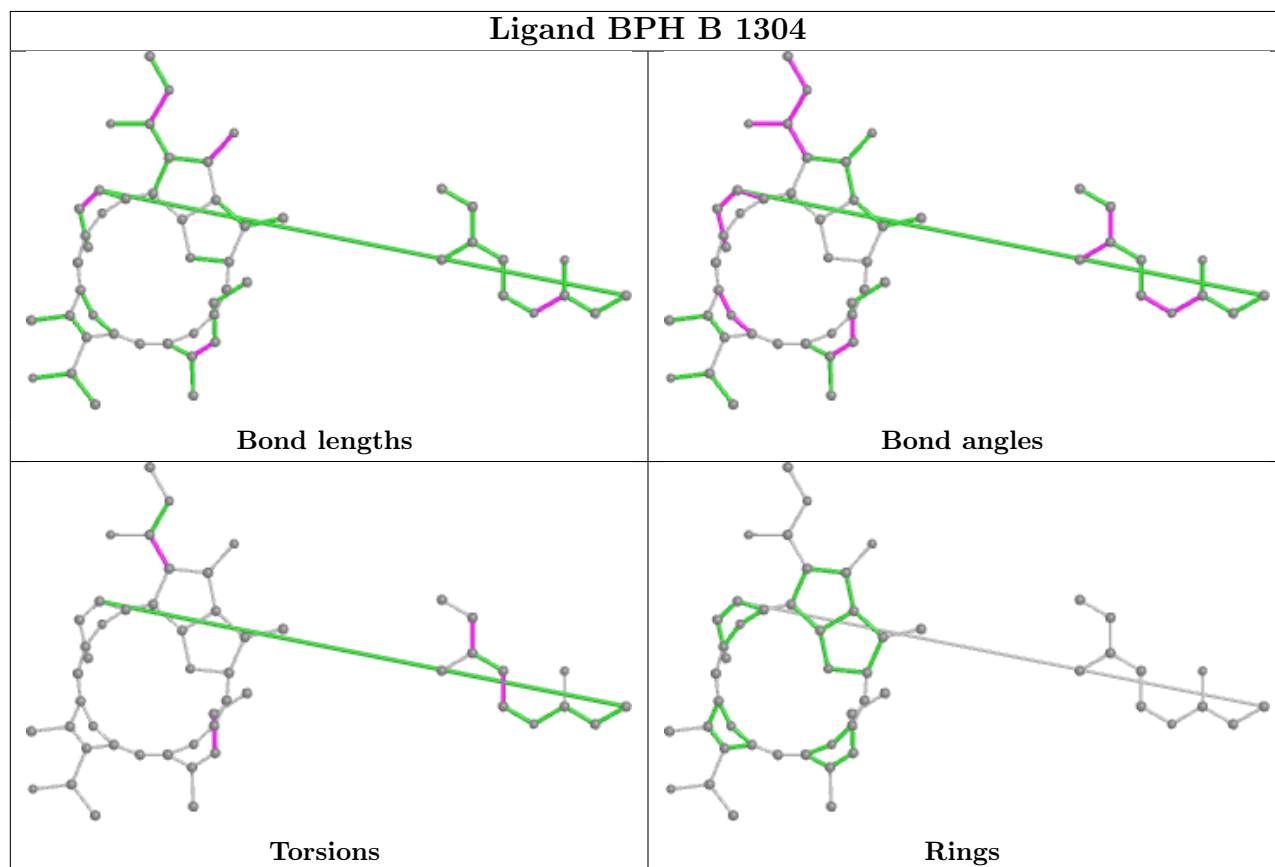
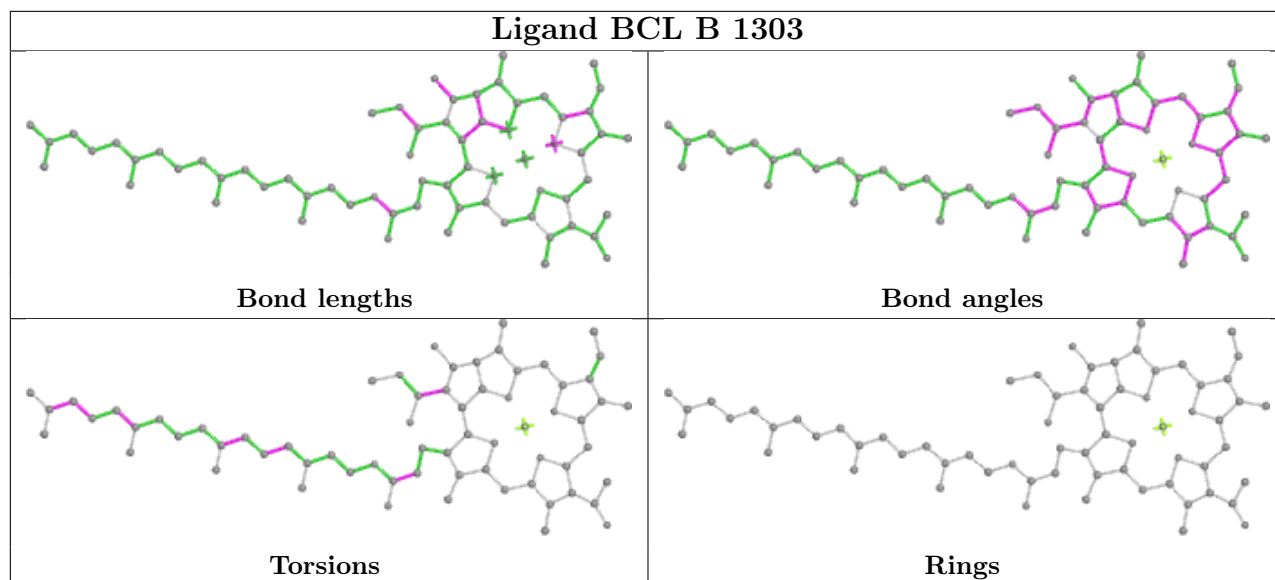
8 monomers are involved in 35 short contacts:

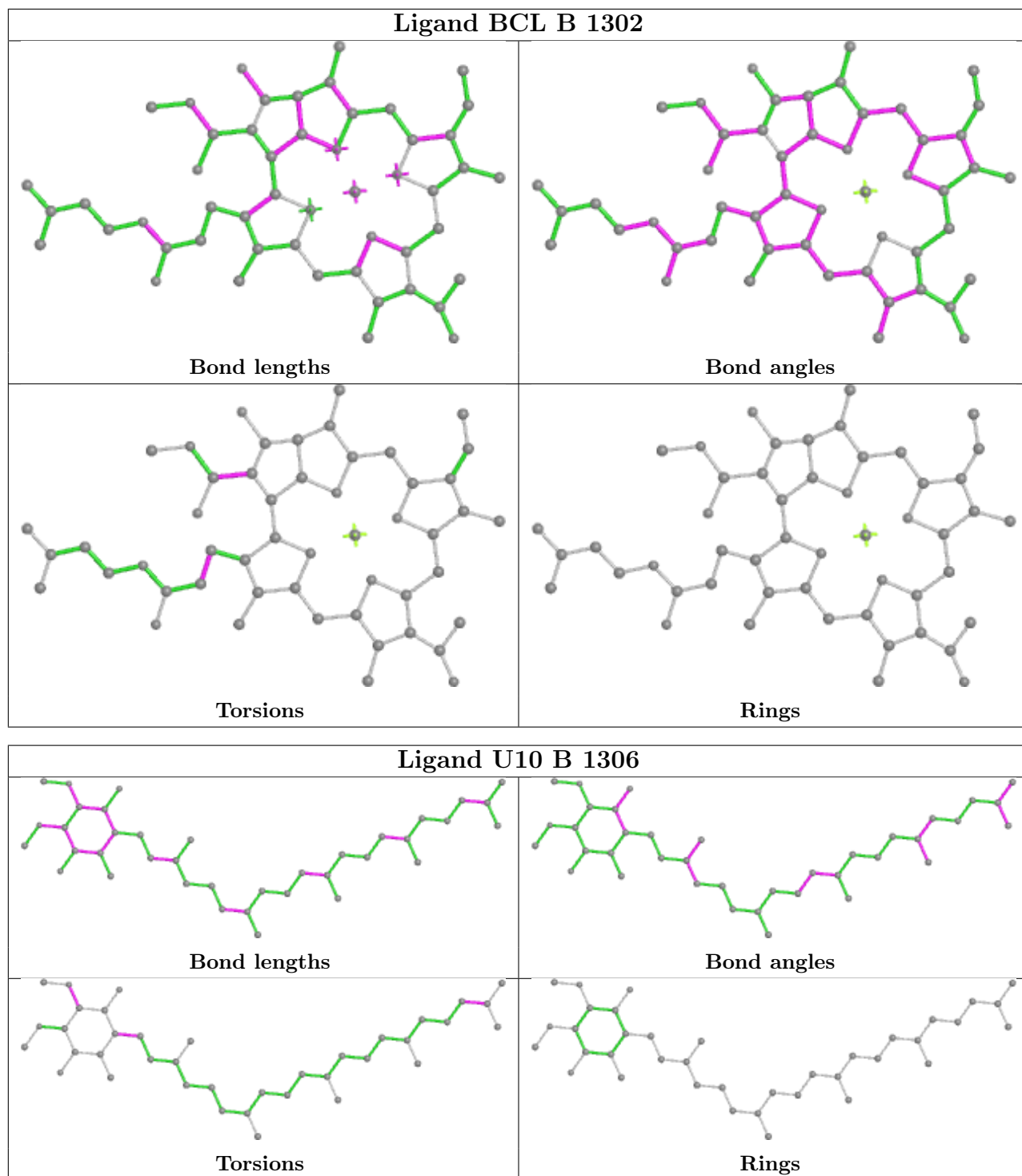
Mol	Chain	Res	Type	Clashes	Symm-Clashes
5	A	1284	BPH	6	0
4	A	1283	BCL	4	0
4	B	1303	BCL	8	0
5	B	1304	BPH	6	0
4	B	1302	BCL	2	0
8	B	1306	U10	4	0
6	A	1285	MST	4	0
4	A	1282	BCL	7	0

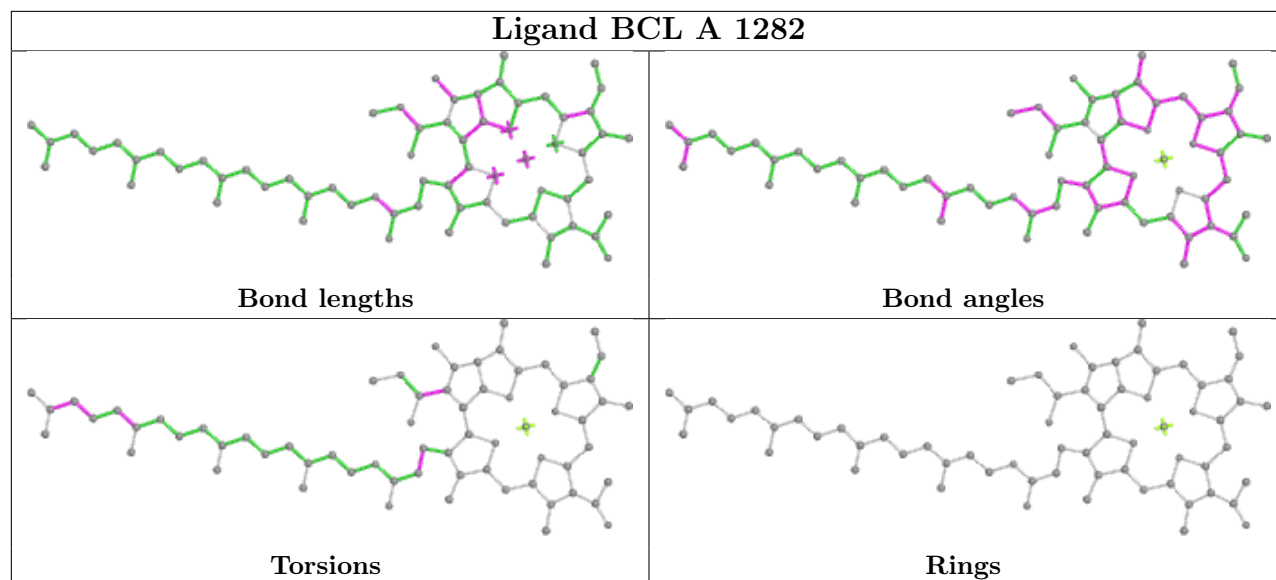
The following is a two-dimensional graphical depiction of Mogul quality analysis of bond lengths, bond angles, torsion angles, and ring geometry for all instances of the Ligand of Interest. In addition, ligands with molecular weight > 250 and outliers as shown on the validation Tables will also be included. For torsion angles, if less than 5% of the Mogul distribution of torsion angles is within 10 degrees of the torsion angle in question, then that torsion angle is considered an outlier. Any bond that is central to one or more torsion angles identified as an outlier by Mogul will be highlighted in the graph. For rings, the root-mean-square deviation (RMSD) between the ring

in question and similar rings identified by Mogul is calculated over all ring torsion angles. If the average RMSD is greater than 60 degrees and the minimal RMSD between the ring in question and any Mogul-identified rings is also greater than 60 degrees, then that ring is considered an outlier. The outliers are highlighted in purple. The color gray indicates Mogul did not find sufficient equivalents in the CSD to analyse the geometry.









5.7 Other polymers [i](#)

There are no such residues in this entry.

5.8 Polymer linkage issues [i](#)

There are no chain breaks in this entry.

6 Fit of model and data

6.1 Protein, DNA and RNA chains

In the following table, the column labelled ‘#RSRZ > 2’ contains the number (and percentage) of RSRZ outliers, followed by percent RSRZ outliers for the chain as percentile scores relative to all X-ray entries and entries of similar resolution. The OWAB column contains the minimum, median, 95th percentile and maximum values of the occupancy-weighted average B-factor per residue. The column labelled ‘Q < 0.9’ lists the number of (and percentage) of residues with an average occupancy less than 0.9.

Mol	Chain	Analysed	<RSRZ>	#RSRZ>2	OWAB(Å ²)	Q<0.9
1	A	281/281 (100%)	0.08	15 (5%) 26 28	19, 27, 54, 58	1 (0%)
2	B	301/307 (98%)	0.12	19 (6%) 20 21	18, 27, 45, 65	4 (1%)
3	C	237/260 (91%)	0.09	10 (4%) 36 39	21, 33, 42, 61	8 (3%)
All	All	819/848 (96%)	0.10	44 (5%) 25 27	18, 29, 47, 65	13 (1%)

All (44) RSRZ outliers are listed below:

Mol	Chain	Res	Type	RSRZ
2	B	301	HIS	6.1
1	A	59	TRP	5.4
2	B	302	GLY	5.0
2	B	2	GLU	4.9
1	A	270	PRO	4.8
1	A	51	TRP	4.8
1	A	265	TRP	4.4
1	A	276	PRO	4.1
3	C	246	PRO	3.9
2	B	72	ILE	3.8
3	C	245	ALA	3.7
1	A	277	GLY	3.6
1	A	271	TRP	3.5
1	A	63	LEU	3.3
2	B	109	LEU	3.3
3	C	186	GLY	3.2
1	A	54	VAL	3.2
2	B	68	PHE	3.1
1	A	55	LEU	3.0
1	A	274	ASN	3.0
1	A	1	ALA	2.9
2	B	67	PHE	2.9
1	A	281	GLY	2.8

Continued on next page...

Continued from previous page...

Mol	Chain	Res	Type	RSRZ
2	B	75	TRP	2.7
2	B	76	TYR	2.7
3	C	52	ASN	2.6
3	C	79	GLU	2.5
2	B	3	TYR	2.5
1	A	266	TRP	2.4
2	B	148	TRP	2.4
2	B	80	TRP	2.3
3	C	163	LYS	2.3
2	B	83	ALA	2.3
3	C	201	ASN	2.3
2	B	106	ALA	2.2
3	C	18	TYR	2.2
2	B	31	GLY	2.2
2	B	100	GLU	2.1
1	A	267	VAL	2.1
3	C	244	ALA	2.1
2	B	297	TRP	2.1
3	C	183	LEU	2.0
2	B	300	ASN	2.0
2	B	289	THR	2.0

6.2 Non-standard residues in protein, DNA, RNA chains [i](#)

There are no non-standard protein/DNA/RNA residues in this entry.

6.3 Carbohydrates [i](#)

There are no monosaccharides in this entry.

6.4 Ligands [i](#)

In the following table, the Atoms column lists the number of modelled atoms in the group and the number defined in the chemical component dictionary. The B-factors column lists the minimum, median, 95th percentile and maximum values of B factors of atoms in the group. The column labelled 'Q< 0.9' lists the number of atoms with occupancy less than 0.9.

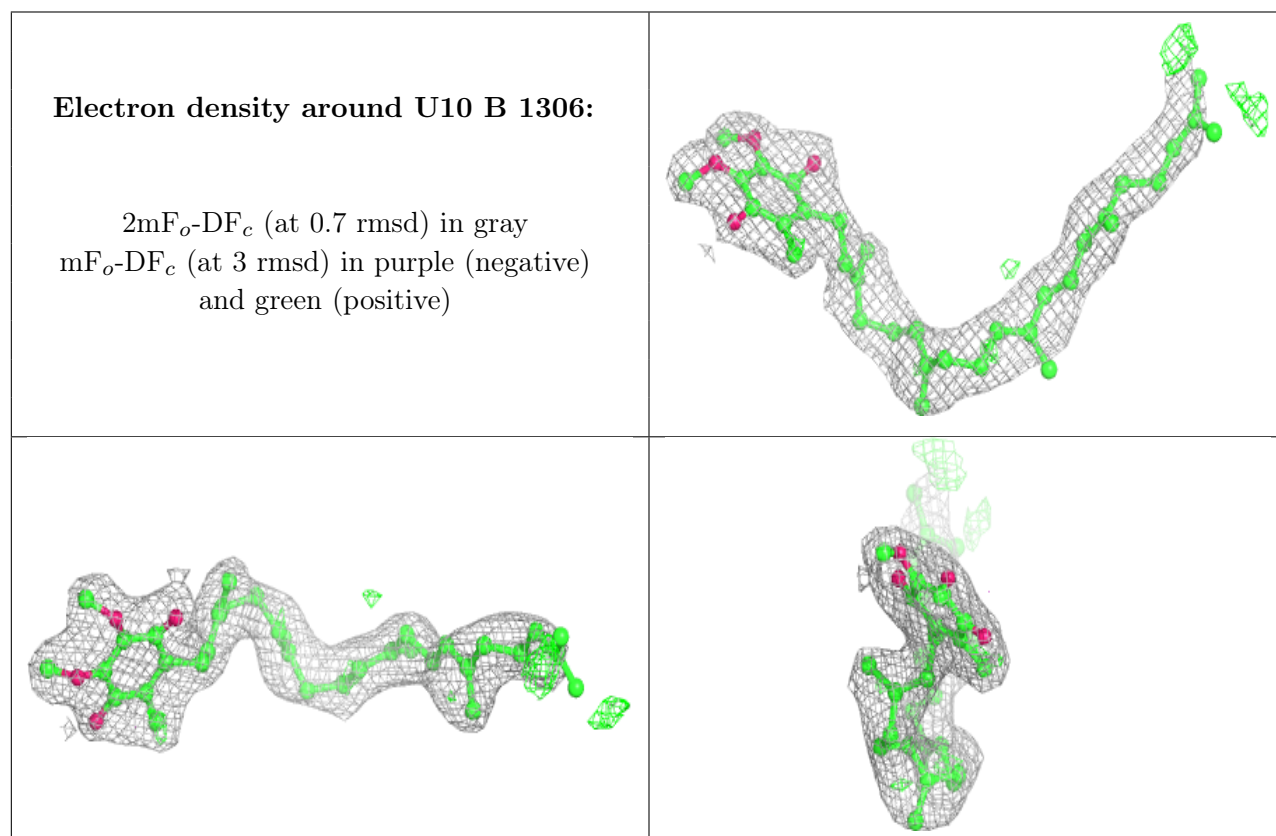
Mol	Type	Chain	Res	Atoms	RSCC	RSR	B-factors(\AA^2)	Q<0.9
6	MST	A	1285	16/16	0.82	0.28	50,56,60,62	0
8	U10	B	1306	38/63	0.89	0.29	40,46,65,66	0

Continued on next page...

Continued from previous page...

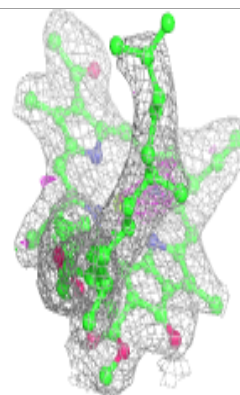
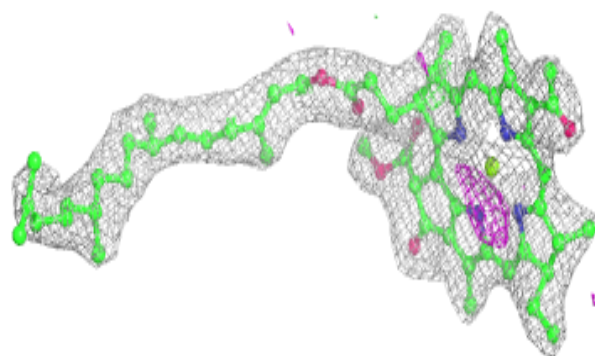
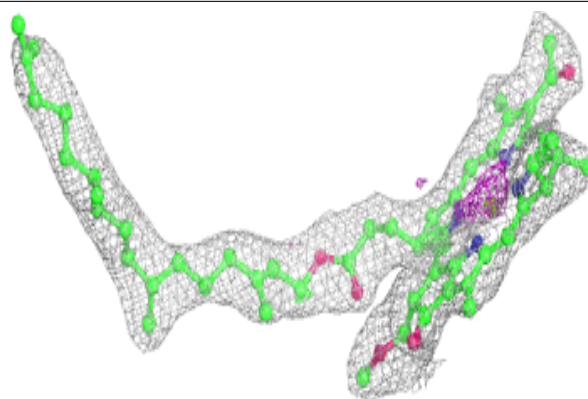
Mol	Type	Chain	Res	Atoms	RSCC	RSR	B-factors(\AA^2)	Q<0.9
4	BCL	A	1282	66/66	0.90	0.24	35,42,50,58	0
4	BCL	B	1303	66/66	0.90	0.22	39,44,56,60	0
4	BCL	A	1283	66/66	0.93	0.25	38,41,55,57	0
5	BPH	B	1304	51/65	0.94	0.20	37,43,60,61	0
4	BCL	B	1302	51/66	0.94	0.18	36,41,53,56	0
5	BPH	A	1284	65/65	0.94	0.26	32,37,48,49	0
10	PO4	B	1309	5/5	0.97	0.17	58,58,59,60	0
10	PO4	B	1308	5/5	0.99	0.20	39,44,45,47	0
9	CL	B	1307	1/1	0.99	0.41	49,49,49,49	0
7	FE2	B	1305	1/1	1.00	0.14	31,31,31,31	0

The following is a graphical depiction of the model fit to experimental electron density of all instances of the Ligand of Interest. In addition, ligands with molecular weight > 250 and outliers as shown on the geometry validation Tables will also be included. Each fit is shown from different orientation to approximate a three-dimensional view.

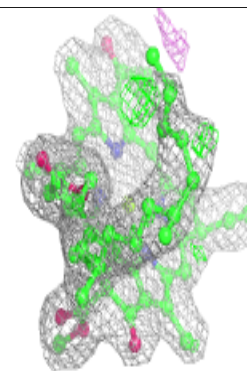
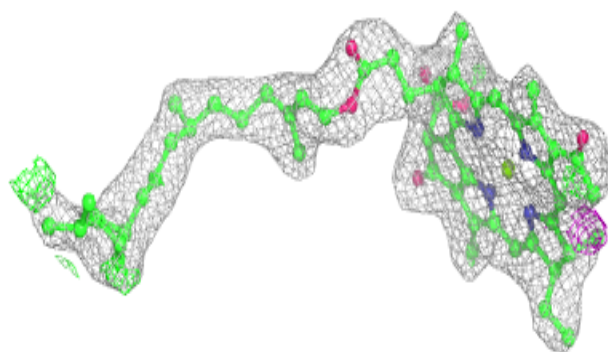
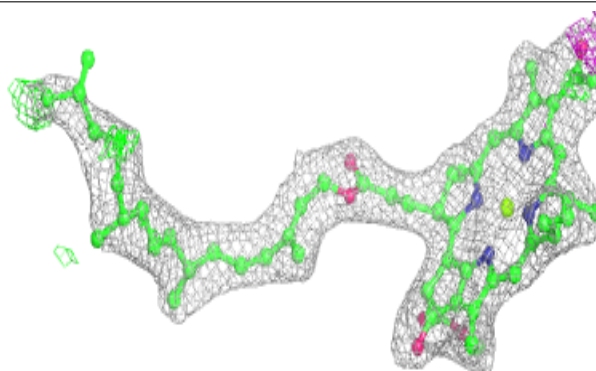


Electron density around BCL A 1282:

$2mF_o-DF_c$ (at 0.7 rmsd) in gray
 mF_o-DF_c (at 3 rmsd) in purple (negative)
and green (positive)

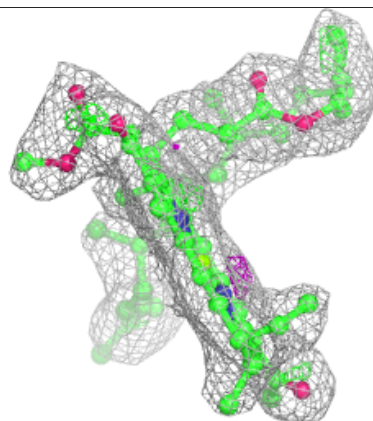
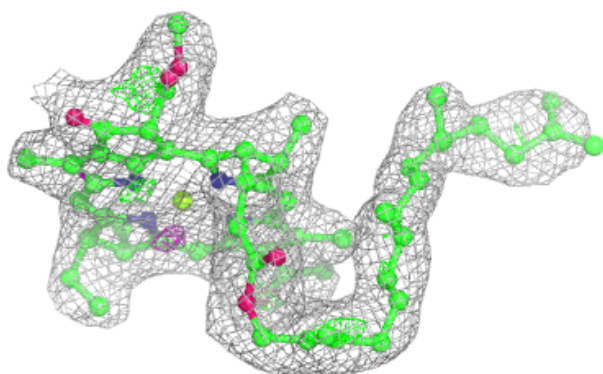
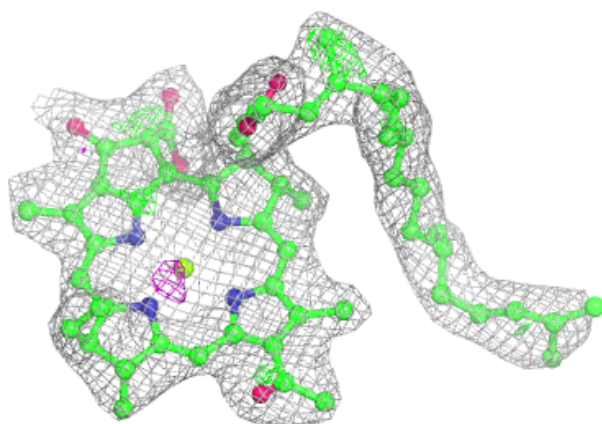
**Electron density around BCL B 1303:**

$2mF_o-DF_c$ (at 0.7 rmsd) in gray
 mF_o-DF_c (at 3 rmsd) in purple (negative)
and green (positive)

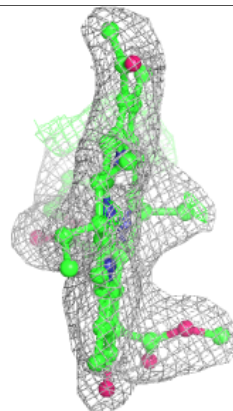
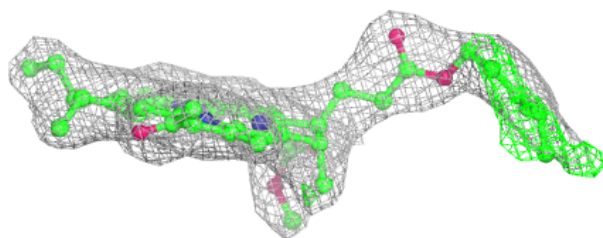
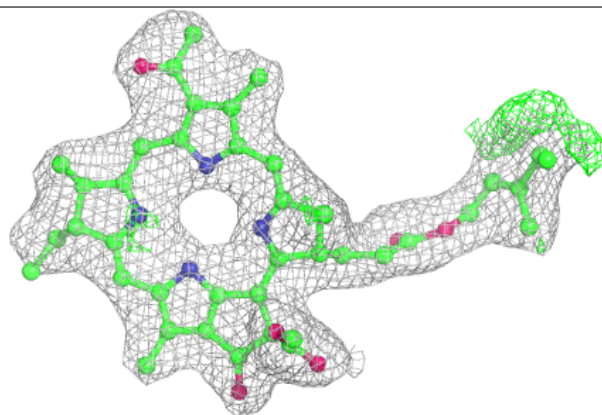


Electron density around BCL A 1283:

$2mF_o-DF_c$ (at 0.7 rmsd) in gray
 mF_o-DF_c (at 3 rmsd) in purple (negative)
and green (positive)

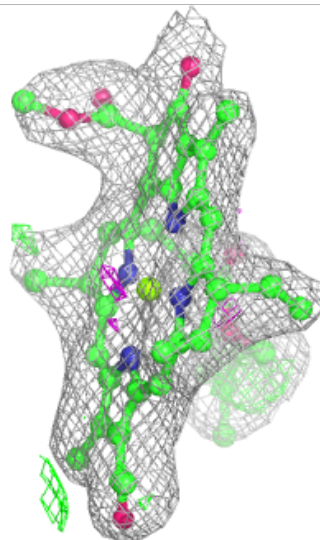
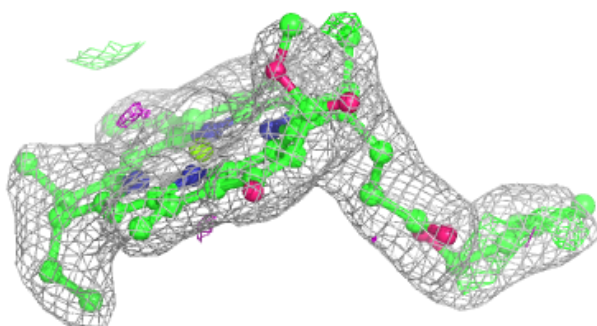
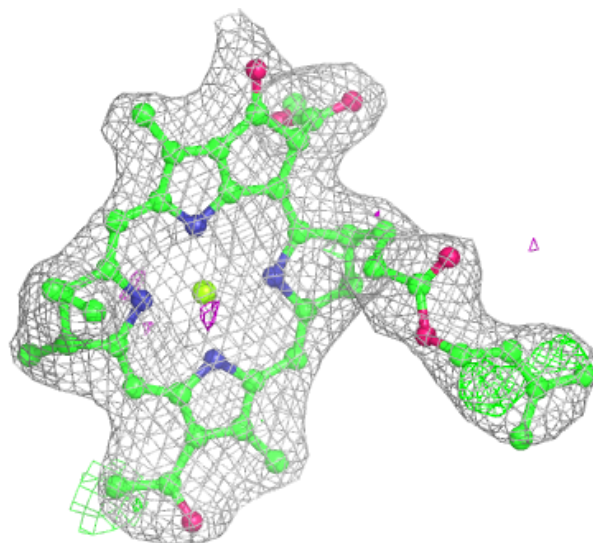
**Electron density around BPH B 1304:**

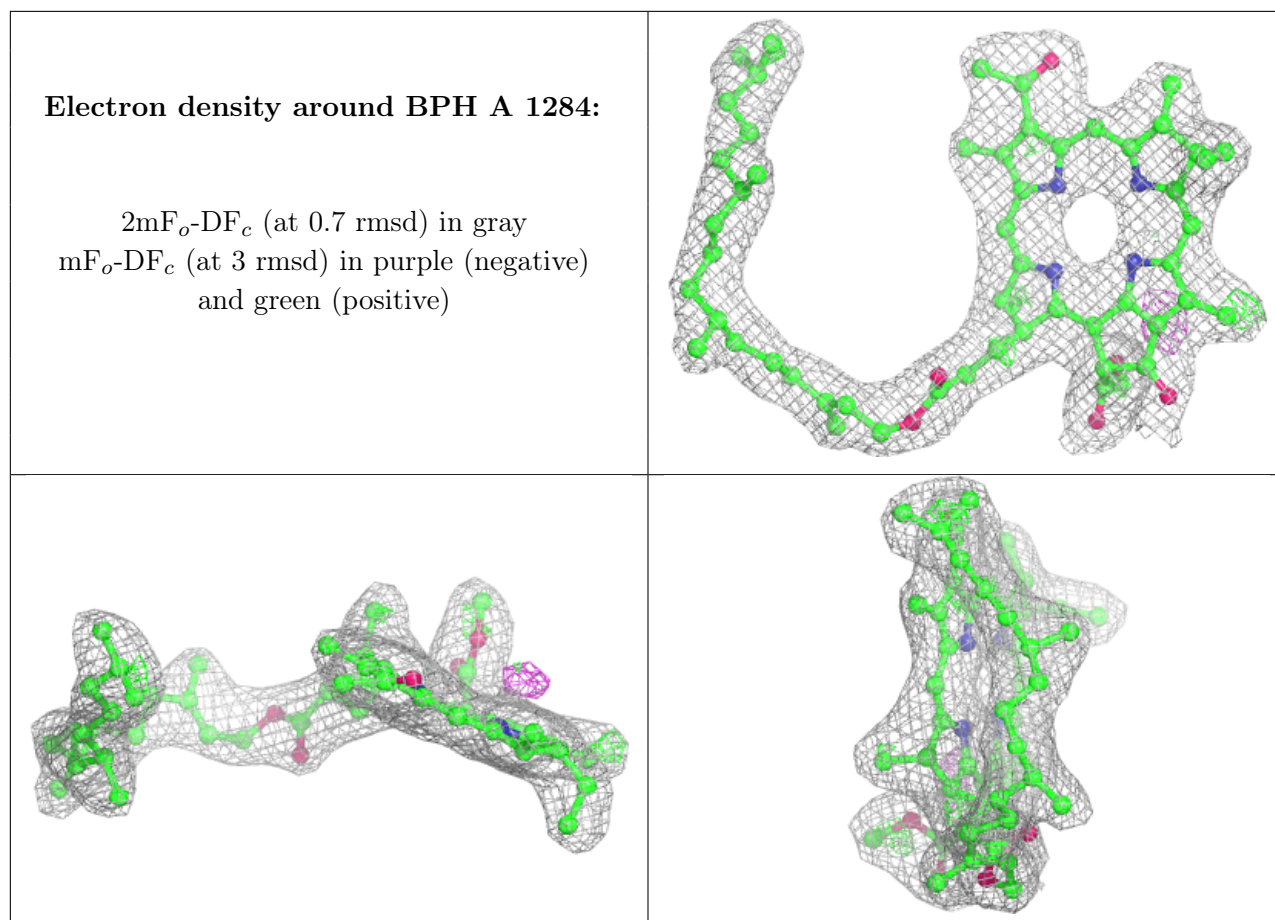
$2mF_o-DF_c$ (at 0.7 rmsd) in gray
 mF_o-DF_c (at 3 rmsd) in purple (negative)
and green (positive)



Electron density around BCL B 1302:

$2mF_o-DF_c$ (at 0.7 rmsd) in gray
 mF_o-DF_c (at 3 rmsd) in purple (negative)
and green (positive)





6.5 Other polymers [i](#)

There are no such residues in this entry.