



# wwPDB X-ray Structure Validation Summary Report

Sep 11, 2023 – 04:55 pm BST

PDB ID : 8BMZ  
Title : Bacteroides thetaiotaomicron surface lipoprotein BT1954 bound to adenosylcobalamin  
Authors : Abellon-Ruiz, J.; Jana, K.; Silale, A.; Basle, A.; Kleinekathofer, U.; van den Berg, B.  
Deposited on : 2022-11-11  
Resolution : 2.30 Å(reported)

This is a wwPDB X-ray Structure Validation Summary Report for a publicly released PDB entry.

We welcome your comments at [validation@mail.wwpdb.org](mailto:validation@mail.wwpdb.org)

A user guide is available at

<https://www.wwpdb.org/validation/2017/XrayValidationReportHelp>

with specific help available everywhere you see the  symbol.

The types of validation reports are described at

<http://www.wwpdb.org/validation/2017/FAQs#types>.

---

The following versions of software and data (see [references](#) ) were used in the production of this report:

MolProbity : 4.02b-467  
Mogul : 1.8.4, CSD as541be (2020)  
Xtriage (Phenix) : 1.13  
EDS : 2.35  
buster-report : 1.1.7 (2018)  
Percentile statistics : 20191225.v01 (using entries in the PDB archive December 25th 2019)  
Refmac : 5.8.0158  
CCP4 : 7.0.044 (Gargrove)  
Ideal geometry (proteins) : Engh & Huber (2001)  
Ideal geometry (DNA, RNA) : Parkinson et al. (1996)  
Validation Pipeline (wwPDB-VP) : 2.35

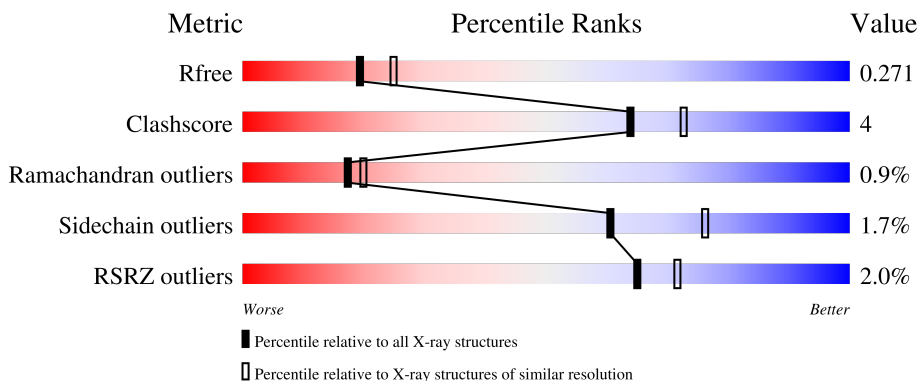
# 1 Overall quality at a glance

The following experimental techniques were used to determine the structure:

*X-RAY DIFFRACTION*

The reported resolution of this entry is 2.30 Å.

Percentile scores (ranging between 0-100) for global validation metrics of the entry are shown in the following graphic. The table shows the number of entries on which the scores are based.



Metric	Whole archive (#Entries)	Similar resolution (#Entries, resolution range(Å))
$R_{free}$	130704	5042 (2.30-2.30)
Clashscore	141614	5643 (2.30-2.30)
Ramachandran outliers	138981	5575 (2.30-2.30)
Sidechain outliers	138945	5575 (2.30-2.30)
RSRZ outliers	127900	4938 (2.30-2.30)

The table below summarises the geometric issues observed across the polymeric chains and their fit to the electron density. The red, orange, yellow and green segments of the lower bar indicate the fraction of residues that contain outliers for  $\geq 3$ , 2, 1 and 0 types of geometric quality criteria respectively. A grey segment represents the fraction of residues that are not modelled. The numeric value for each fraction is indicated below the corresponding segment, with a dot representing fractions  $\leq 5\%$ . The upper red bar (where present) indicates the fraction of residues that have poor fit to the electron density. The numeric value is given above the bar.

Mol	Chain	Length	Quality of chain
1	A	343	
1	B	343	

The following table lists non-polymeric compounds, carbohydrate monomers and non-standard residues in protein, DNA, RNA chains that are outliers for geometric or electron-density-fit criteria:

Mol	Type	Chain	Res	Chirality	Geometry	Clashes	Electron density
4	B1Z	A	404	X	-	-	-
4	B1Z	B	406	X	-	-	-

## 2 Entry composition i

There are 5 unique types of molecules in this entry. The entry contains 10977 atoms, of which 5054 are hydrogens and 0 are deuteriums.

In the tables below, the ZeroOcc column contains the number of atoms modelled with zero occupancy, the AltConf column contains the number of residues with at least one atom in alternate conformation and the Trace column contains the number of residues modelled with at most 2 atoms.

- Molecule 1 is a protein called Putative surface layer protein.

Mol	Chain	Residues	Atoms						ZeroOcc	AltConf	Trace
			Total	C	H	N	O	S			
1	A	331	5150	1756	2431	432	519	12	0	2	0
1	B	333	5170	1764	2435	438	521	12	0	1	0

There are 16 discrepancies between the modelled and reference sequences:

Chain	Residue	Modelled	Actual	Comment	Reference
A	367	LEU	-	expression tag	UNP Q8A6D0
A	368	GLU	-	expression tag	UNP Q8A6D0
A	369	HIS	-	expression tag	UNP Q8A6D0
A	370	HIS	-	expression tag	UNP Q8A6D0
A	371	HIS	-	expression tag	UNP Q8A6D0
A	372	HIS	-	expression tag	UNP Q8A6D0
A	373	HIS	-	expression tag	UNP Q8A6D0
A	374	HIS	-	expression tag	UNP Q8A6D0
B	367	LEU	-	expression tag	UNP Q8A6D0
B	368	GLU	-	expression tag	UNP Q8A6D0
B	369	HIS	-	expression tag	UNP Q8A6D0
B	370	HIS	-	expression tag	UNP Q8A6D0
B	371	HIS	-	expression tag	UNP Q8A6D0
B	372	HIS	-	expression tag	UNP Q8A6D0
B	373	HIS	-	expression tag	UNP Q8A6D0
B	374	HIS	-	expression tag	UNP Q8A6D0

- Molecule 2 is CHLORIDE ION (three-letter code: CL) (formula: Cl).

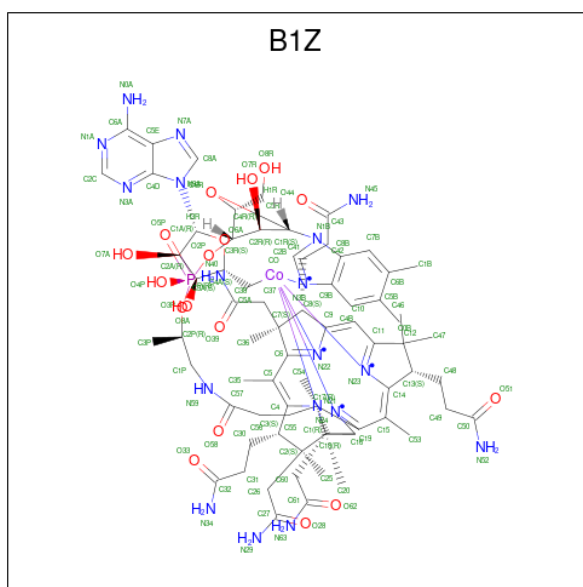
Mol	Chain	Residues	Atoms		ZeroOcc	AltConf
2	A	1	Total	Cl	0	0
			1	1		
2	B	2	Total	Cl	0	0
			2	2		

- Molecule 3 is SULFATE ION (three-letter code: SO4) (formula: O<sub>4</sub>S).



Mol	Chain	Residues	Atoms			ZeroOcc	AltConf
3	A	1	Total	O	S	0	0
			5	4	1		
3	A	1	Total	O	S	0	0
			5	4	1		
3	B	1	Total	O	S	0	0
			5	4	1		
3	B	1	Total	O	S	0	0
			5	4	1		

- Molecule 4 is Adenosylcobalamin (three-letter code: B1Z) (formula: C<sub>72</sub>H<sub>101</sub>CoN<sub>18</sub>O<sub>17</sub>P) (labeled as "Ligand of Interest" by depositor).



Mol	Chain	Residues	Atoms						ZeroOcc	AltConf	
			Total	C	Co	H	N	O			P
4	A	1	203	72	1	94	18	17	1	0	0
4	B	1	203	72	1	94	18	17	1	0	0

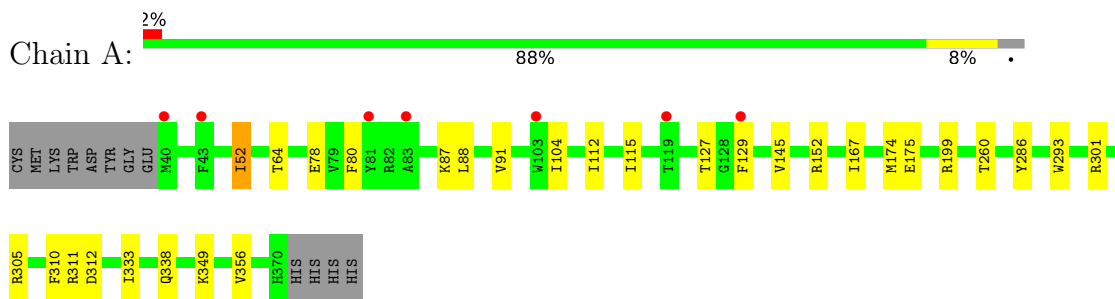
- Molecule 5 is water.

Mol	Chain	Residues	Atoms		ZeroOcc	AltConf
5	A	115	Total	O	0	0
			115	115		
5	B	108	Total	O	0	0
			108	108		

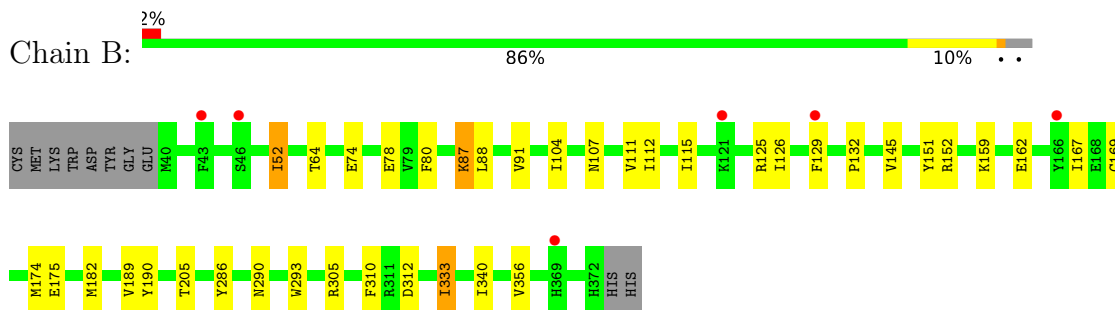
### 3 Residue-property plots [i](#)

These plots are drawn for all protein, RNA, DNA and oligosaccharide chains in the entry. The first graphic for a chain summarises the proportions of the various outlier classes displayed in the second graphic. The second graphic shows the sequence view annotated by issues in geometry and electron density. Residues are color-coded according to the number of geometric quality criteria for which they contain at least one outlier: green = 0, yellow = 1, orange = 2 and red = 3 or more. A red dot above a residue indicates a poor fit to the electron density ( $RSRZ > 2$ ). Stretches of 2 or more consecutive residues without any outlier are shown as a green connector. Residues present in the sample, but not in the model, are shown in grey.

- Molecule 1: Putative surface layer protein



- Molecule 1: Putative surface layer protein



## 4 Data and refinement statistics

Property	Value	Source
Space group	P 1 21 1	Depositor
Cell constants a, b, c, $\alpha$ , $\beta$ , $\gamma$	80.72Å 58.71Å 101.89Å 90.00° 104.13° 90.00°	Depositor
Resolution (Å)	70.28 – 2.30 70.28 – 2.30	Depositor EDS
% Data completeness (in resolution range)	99.9 (70.28-2.30) 99.9 (70.28-2.30)	Depositor EDS
$R_{merge}$	0.23	Depositor
$R_{sym}$	(Not available)	Depositor
$\langle I/\sigma(I) \rangle$ <sup>1</sup>	1.77 (at 2.29Å)	Xtriage
Refinement program	REFMAC 5.8.0352, REFMAC 5.8.0352	Depositor
R, $R_{free}$	0.223 , 0.268 0.230 , 0.271	Depositor DCC
$R_{free}$ test set	2001 reflections (4.83%)	wwPDB-VP
Wilson B-factor (Å <sup>2</sup> )	24.8	Xtriage
Anisotropy	0.552	Xtriage
Bulk solvent $k_{sol}$ (e/Å <sup>3</sup> ), $B_{sol}$ (Å <sup>2</sup> )	0.40 , 32.2	EDS
L-test for twinning <sup>2</sup>	$\langle  L  \rangle = 0.51$ , $\langle L^2 \rangle = 0.34$	Xtriage
Estimated twinning fraction	No twinning to report.	Xtriage
$F_o, F_c$ correlation	0.93	EDS
Total number of atoms	10977	wwPDB-VP
Average B, all atoms (Å <sup>2</sup> )	35.0	wwPDB-VP

Xtriage's analysis on translational NCS is as follows: *The largest off-origin peak in the Patterson function is 15.63% of the height of the origin peak. No significant pseudotranslation is detected.*

<sup>1</sup>Intensities estimated from amplitudes.

<sup>2</sup>Theoretical values of  $\langle |L| \rangle$ ,  $\langle L^2 \rangle$  for acentric reflections are 0.5, 0.333 respectively for untwinned datasets, and 0.375, 0.2 for perfectly twinned datasets.



## 5 Model quality [i](#)

### 5.1 Standard geometry [i](#)

Bond lengths and bond angles in the following residue types are not validated in this section: B1Z, SO4, CL

The Z score for a bond length (or angle) is the number of standard deviations the observed value is removed from the expected value. A bond length (or angle) with  $|Z| > 5$  is considered an outlier worth inspection. RMSZ is the root-mean-square of all Z scores of the bond lengths (or angles).

Mol	Chain	Bond lengths		Bond angles	
		RMSZ	# $ Z  > 5$	RMSZ	# $ Z  > 5$
1	A	0.53	0/2801	0.90	0/3812
1	B	0.55	1/2816 (0.0%)	0.89	0/3832
All	All	0.54	1/5617 (0.0%)	0.89	0/7644

Chiral center outliers are detected by calculating the chiral volume of a chiral center and verifying if the center is modelled as a planar moiety or with the opposite hand. A planarity outlier is detected by checking planarity of atoms in a peptide group, atoms in a mainchain group or atoms of a sidechain that are expected to be planar.

Mol	Chain	#Chirality outliers	#Planarity outliers
1	A	0	4
1	B	0	1
All	All	0	5

All (1) bond length outliers are listed below:

Mol	Chain	Res	Type	Atoms	Z	Observed(Å)	Ideal(Å)
1	B	74	GLU	CD-OE1	6.11	1.32	1.25

There are no bond angle outliers.

There are no chirality outliers.

All (5) planarity outliers are listed below:

Mol	Chain	Res	Type	Group
1	A	199	ARG	Sidechain
1	A	301	ARG	Sidechain
1	A	305	ARG	Sidechain
1	A	311	ARG	Sidechain
1	B	125	ARG	Sidechain

## 5.2 Too-close contacts [i](#)

In the following table, the Non-H and H(model) columns list the number of non-hydrogen atoms and hydrogen atoms in the chain respectively. The H(added) column lists the number of hydrogen atoms added and optimized by MolProbity. The Clashes column lists the number of clashes within the asymmetric unit, whereas Symm-Clashes lists symmetry-related clashes.

Mol	Chain	Non-H	H(model)	H(added)	Clashes	Symm-Clashes
1	A	2719	2431	2593	14	0
1	B	2735	2435	2598	19	0
2	A	1	0	0	0	0
2	B	2	0	0	0	0
3	A	10	0	0	0	0
3	B	15	0	0	0	0
4	A	109	94	98	6	0
4	B	109	94	98	9	0
5	A	115	0	0	2	0
5	B	108	0	0	1	0
All	All	5923	5054	5387	46	0

The all-atom clashscore is defined as the number of clashes found per 1000 atoms (including hydrogen atoms). The all-atom clashscore for this structure is 4.

The worst 5 of 46 close contacts within the same asymmetric unit are listed below, sorted by their clash magnitude.

Atom-1	Atom-2	Interatomic distance (Å)	Clash overlap (Å)
4:B:406:B1Z:H35	4:B:406:B1Z:H36A	1.39	1.02
4:A:404:B1Z:H35	4:A:404:B1Z:H36A	1.43	0.99
1:A:112:ILE:HD12	1:A:129:PHE:CZ	2.21	0.76
4:B:406:B1Z:H55A	4:B:406:B1Z:H53	1.68	0.74
4:A:404:B1Z:H55A	4:A:404:B1Z:H53	1.73	0.71

There are no symmetry-related clashes.

## 5.3 Torsion angles [i](#)

### 5.3.1 Protein backbone [i](#)

In the following table, the Percentiles column shows the percent Ramachandran outliers of the chain as a percentile score with respect to all X-ray entries followed by that with respect to entries of similar resolution.

The Analysed column shows the number of residues for which the backbone conformation was

analysed, and the total number of residues.

Mol	Chain	Analysed	Favoured	Allowed	Outliers	Percentiles	
1	A	331/343 (96%)	305 (92%)	23 (7%)	3 (1%)	17	20
1	B	332/343 (97%)	307 (92%)	22 (7%)	3 (1%)	17	20
All	All	663/686 (97%)	612 (92%)	45 (7%)	6 (1%)	17	20

5 of 6 Ramachandran outliers are listed below:

Mol	Chain	Res	Type
1	B	356	VAL
1	A	333	ILE
1	A	356	VAL
1	B	333	ILE
1	A	91	VAL

### 5.3.2 Protein sidechains [i](#)

In the following table, the Percentiles column shows the percent sidechain outliers of the chain as a percentile score with respect to all X-ray entries followed by that with respect to entries of similar resolution.

The Analysed column shows the number of residues for which the sidechain conformation was analysed, and the total number of residues.

Mol	Chain	Analysed	Rotameric	Outliers	Percentiles	
1	A	296/305 (97%)	292 (99%)	4 (1%)	67	81
1	B	297/305 (97%)	291 (98%)	6 (2%)	55	72
All	All	593/610 (97%)	583 (98%)	10 (2%)	60	76

5 of 10 residues with a non-rotameric sidechain are listed below:

Mol	Chain	Res	Type
1	B	175	GLU
1	B	290	ASN
1	B	305	ARG
1	A	349	LYS
1	B	52	ILE

Sometimes sidechains can be flipped to improve hydrogen bonding and reduce clashes. All (1) such sidechains are listed below:

Mol	Chain	Res	Type
1	A	338	GLN

### 5.3.3 RNA [i](#)

There are no RNA molecules in this entry.

### 5.4 Non-standard residues in protein, DNA, RNA chains [i](#)

There are no non-standard protein/DNA/RNA residues in this entry.

### 5.5 Carbohydrates [i](#)

There are no monosaccharides in this entry.

### 5.6 Ligand geometry [i](#)

Of 10 ligands modelled in this entry, 3 are monoatomic - leaving 7 for Mogul analysis.

In the following table, the Counts columns list the number of bonds (or angles) for which Mogul statistics could be retrieved, the number of bonds (or angles) that are observed in the model and the number of bonds (or angles) that are defined in the Chemical Component Dictionary. The Link column lists molecule types, if any, to which the group is linked. The Z score for a bond length (or angle) is the number of standard deviations the observed value is removed from the expected value. A bond length (or angle) with  $|Z| > 2$  is considered an outlier worth inspection. RMSZ is the root-mean-square of all Z scores of the bond lengths (or angles).

Mol	Type	Chain	Res	Link	Bond lengths			Bond angles		
					Counts	RMSZ	# $ Z  > 2$	Counts	RMSZ	# $ Z  > 2$
4	B1Z	A	404	-	110,123,123	1.12	7 (6%)	143,208,208	0.93	8 (5%)
3	SO4	B	405	-	4,4,4	0.27	0	6,6,6	0.17	0
3	SO4	A	402	-	4,4,4	0.25	0	6,6,6	0.22	0
3	SO4	B	403	-	4,4,4	0.22	0	6,6,6	0.13	0
4	B1Z	B	406	-	110,123,123	1.09	6 (5%)	143,208,208	1.00	9 (6%)
3	SO4	B	404	-	4,4,4	0.31	0	6,6,6	0.17	0
3	SO4	A	403	-	4,4,4	0.32	0	6,6,6	0.34	0

In the following table, the Chirals column lists the number of chiral outliers, the number of chiral centers analysed, the number of these observed in the model and the number defined in the Chemical Component Dictionary. Similar counts are reported in the Torsion and Rings columns. '-' means no outliers of that kind were identified.

Mol	Type	Chain	Res	Link	Chirals	Torsions	Rings
4	B1Z	B	406	-	1/1/51/51	7/52/304/304	0/3/15/15
4	B1Z	A	404	-	1/1/51/51	9/52/304/304	0/3/15/15

The worst 5 of 13 bond length outliers are listed below:

Mol	Chain	Res	Type	Atoms	Z	Observed(Å)	Ideal(Å)
4	B	406	B1Z	CO-N24	4.95	1.98	1.88
4	A	404	B1Z	C14-C15	4.75	1.47	1.37
4	A	404	B1Z	CO-N24	4.50	1.97	1.88
4	B	406	B1Z	C14-C15	4.23	1.46	1.37
4	B	406	B1Z	CO-N22	3.38	1.99	1.91

The worst 5 of 17 bond angle outliers are listed below:

Mol	Chain	Res	Type	Atoms	Z	Observed(°)	Ideal(°)
4	A	404	B1Z	C5-C4-N21	-3.70	121.08	126.24
4	B	406	B1Z	C35-C5-C4	-3.17	112.06	118.43
4	B	406	B1Z	C26-C2-C3	-3.03	102.05	107.41
4	B	406	B1Z	C6-C5-C4	3.02	125.83	121.25
4	A	404	B1Z	C26-C2-C3	-2.90	102.29	107.41

All (2) chirality outliers are listed below:

Mol	Chain	Res	Type	Atom
4	A	404	B1Z	N21
4	B	406	B1Z	N21

5 of 16 torsion outliers are listed below:

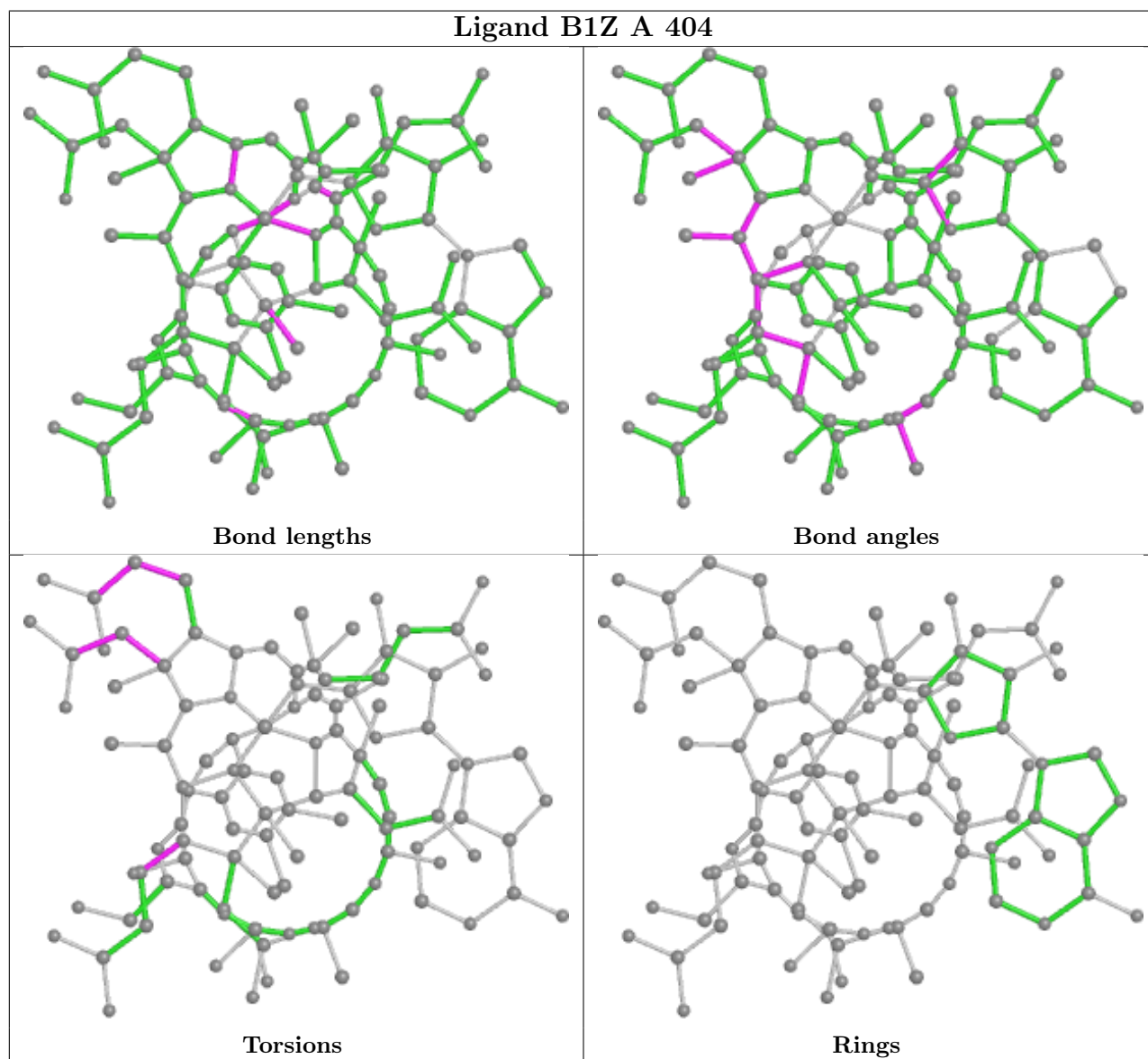
Mol	Chain	Res	Type	Atoms
4	B	406	B1Z	O6R-C4R-C5R-O8R
4	B	406	B1Z	C3R-C4R-C5R-O8R
4	B	406	B1Z	C41-C42-C43-O44
4	A	404	B1Z	C38-C37-C7-C6
4	A	404	B1Z	C4-C3-C30-C31

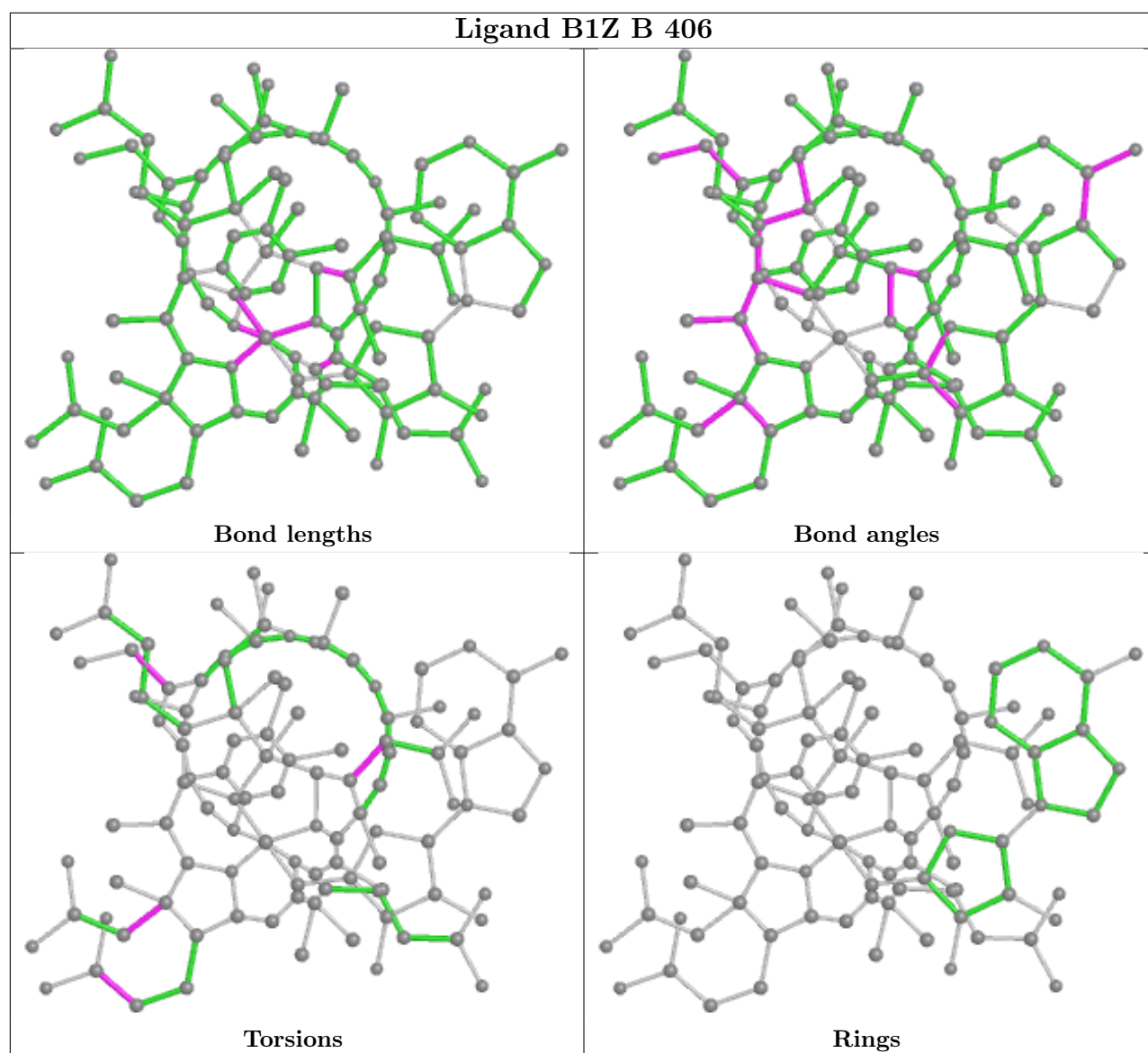
There are no ring outliers.

2 monomers are involved in 15 short contacts:

Mol	Chain	Res	Type	Clashes	Symm-Clashes
4	A	404	B1Z	6	0
4	B	406	B1Z	9	0

The following is a two-dimensional graphical depiction of Mogul quality analysis of bond lengths, bond angles, torsion angles, and ring geometry for all instances of the Ligand of Interest. In addition, ligands with molecular weight > 250 and outliers as shown on the validation Tables will also be included. For torsion angles, if less than 5% of the Mogul distribution of torsion angles is within 10 degrees of the torsion angle in question, then that torsion angle is considered an outlier. Any bond that is central to one or more torsion angles identified as an outlier by Mogul will be highlighted in the graph. For rings, the root-mean-square deviation (RMSD) between the ring in question and similar rings identified by Mogul is calculated over all ring torsion angles. If the average RMSD is greater than 60 degrees and the minimal RMSD between the ring in question and any Mogul-identified rings is also greater than 60 degrees, then that ring is considered an outlier. The outliers are highlighted in purple. The color gray indicates Mogul did not find sufficient equivalents in the CSD to analyse the geometry.





## 5.7 Other polymers [\(i\)](#)

There are no such residues in this entry.

## 5.8 Polymer linkage issues [\(i\)](#)

There are no chain breaks in this entry.

## 6 Fit of model and data [i](#)

### 6.1 Protein, DNA and RNA chains [i](#)

In the following table, the column labelled ‘#RSRZ > 2’ contains the number (and percentage) of RSRZ outliers, followed by percent RSRZ outliers for the chain as percentile scores relative to all X-ray entries and entries of similar resolution. The OWAB column contains the minimum, median, 95<sup>th</sup> percentile and maximum values of the occupancy-weighted average B-factor per residue. The column labelled ‘Q < 0.9’ lists the number of (and percentage) of residues with an average occupancy less than 0.9.

Mol	Chain	Analysed	<RSRZ>	#RSRZ>2	OWAB(Å <sup>2</sup> )	Q<0.9
1	A	331/343 (96%)	0.38	7 (2%) 63 70	19, 34, 54, 82	0
1	B	333/343 (97%)	0.33	6 (1%) 68 74	20, 34, 53, 102	0
All	All	664/686 (96%)	0.35	13 (1%) 65 71	19, 34, 53, 102	0

The worst 5 of 13 RSRZ outliers are listed below:

Mol	Chain	Res	Type	RSRZ
1	B	46	SER	3.8
1	A	129	PHE	3.7
1	A	43	PHE	3.3
1	B	43	PHE	3.2
1	A	119	THR	2.9

### 6.2 Non-standard residues in protein, DNA, RNA chains [i](#)

There are no non-standard protein/DNA/RNA residues in this entry.

### 6.3 Carbohydrates [i](#)

There are no monosaccharides in this entry.

### 6.4 Ligands [i](#)

In the following table, the Atoms column lists the number of modelled atoms in the group and the number defined in the chemical component dictionary. The B-factors column lists the minimum, median, 95<sup>th</sup> percentile and maximum values of B factors of atoms in the group. The column labelled ‘Q < 0.9’ lists the number of atoms with occupancy less than 0.9.

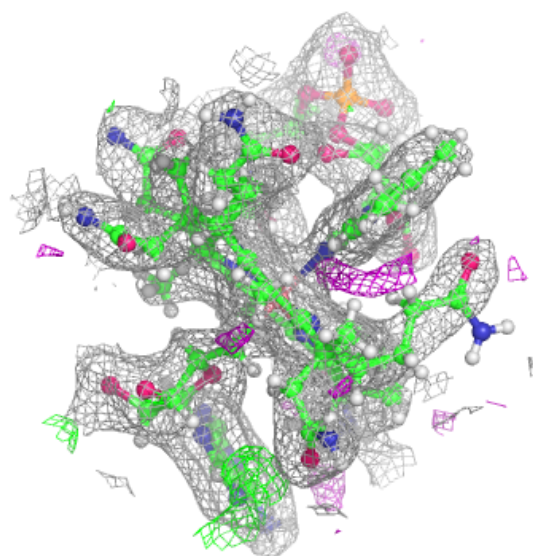
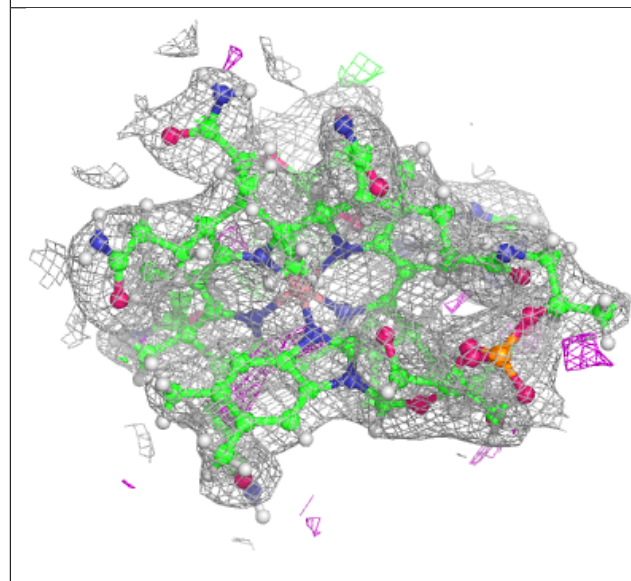
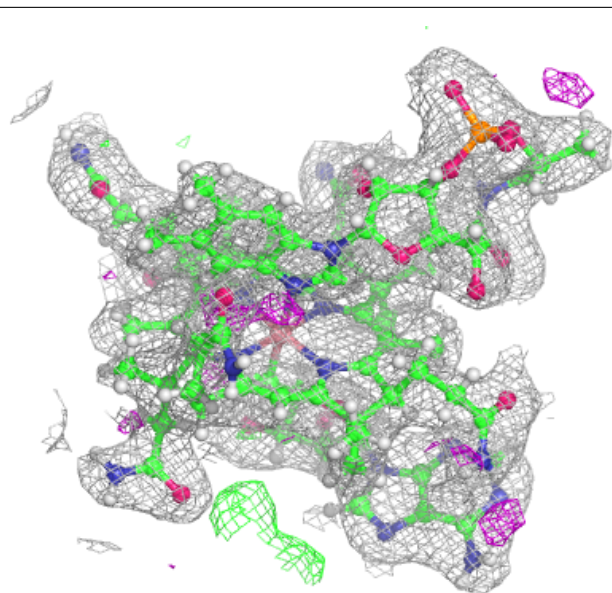


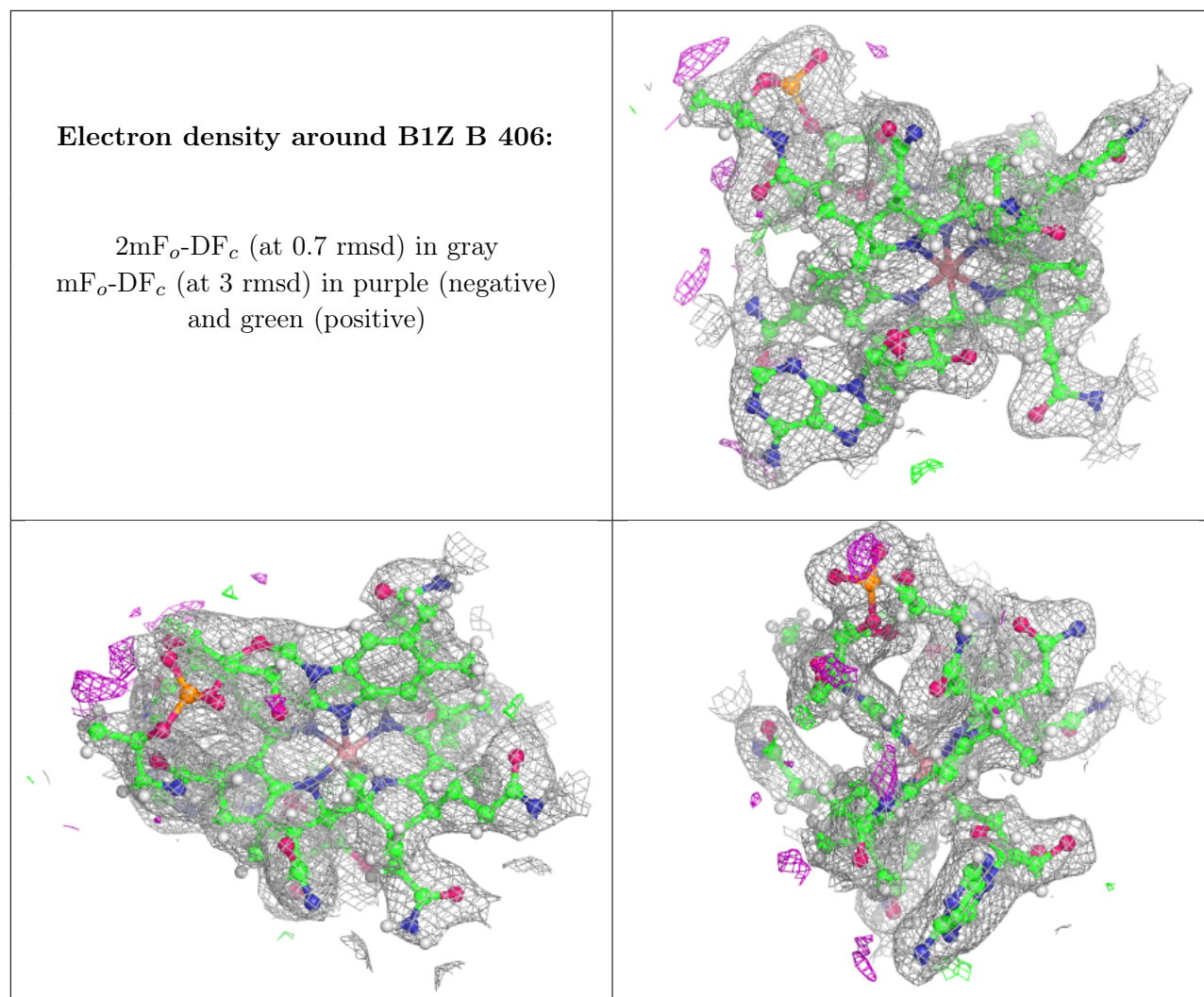
Mol	Type	Chain	Res	Atoms	RSCC	RSR	B-factors( $\text{\AA}^2$ )	Q<0.9
3	SO4	B	405	5/5	0.93	0.17	58,61,78,85	0
3	SO4	B	404	5/5	0.95	0.27	64,66,77,82	0
3	SO4	A	402	5/5	0.96	0.18	49,62,67,68	0
3	SO4	B	403	5/5	0.96	0.17	51,55,63,66	0
4	B1Z	A	404	109/109	0.96	0.16	19,26,34,59	0
2	CL	B	401	1/1	0.97	0.09	32,32,32,32	0
3	SO4	A	403	5/5	0.97	0.12	39,43,49,50	0
4	B1Z	B	406	109/109	0.97	0.16	18,25,36,43	0
2	CL	B	402	1/1	0.98	0.18	39,39,39,39	0
2	CL	A	401	1/1	0.98	0.11	31,31,31,31	0

The following is a graphical depiction of the model fit to experimental electron density of all instances of the Ligand of Interest. In addition, ligands with molecular weight > 250 and outliers as shown on the geometry validation Tables will also be included. Each fit is shown from different orientation to approximate a three-dimensional view.

**Electron density around B1Z A 404:**

$2mF_o-DF_c$  (at 0.7 rmsd) in gray  
 $mF_o-DF_c$  (at 3 rmsd) in purple (negative)  
and green (positive)





## 6.5 Other polymers [i](#)

There are no such residues in this entry.