



# wwPDB X-ray Structure Validation Summary Report ⓘ

Oct 30, 2023 – 01:37 PM JST

PDB ID : 5B0L  
Title : Structure of MoeN5-Sso7d fusion protein in complex with beta-nonyl glucoside  
Authors : Ko, T.-P.; Zhang, L.; Chen, C.-C.; Guo, R.-T.; Oldfield, E.O.  
Deposited on : 2015-11-02  
Resolution : 2.80 Å(reported)

This is a wwPDB X-ray Structure Validation Summary Report for a publicly released PDB entry.

We welcome your comments at [validation@mail.wwpdb.org](mailto:validation@mail.wwpdb.org)

A user guide is available at

<https://www.wwpdb.org/validation/2017/XrayValidationReportHelp>

with specific help available everywhere you see the ⓘ symbol.

The types of validation reports are described at

<http://www.wwpdb.org/validation/2017/FAQs#types>.

---

The following versions of software and data (see [references ⓘ](#)) were used in the production of this report:

MolProbity : 4.02b-467  
Mogul : 1.8.5 (274361), CSD as541be (2020)  
Xtriage (Phenix) : 1.13  
EDS : 2.36  
buster-report : 1.1.7 (2018)  
Percentile statistics : 20191225.v01 (using entries in the PDB archive December 25th 2019)  
Refmac : 5.8.0158  
CCP4 : 7.0.044 (Gargrove)  
Ideal geometry (proteins) : Engh & Huber (2001)  
Ideal geometry (DNA, RNA) : Parkinson et al. (1996)  
Validation Pipeline (wwPDB-VP) : 2.36

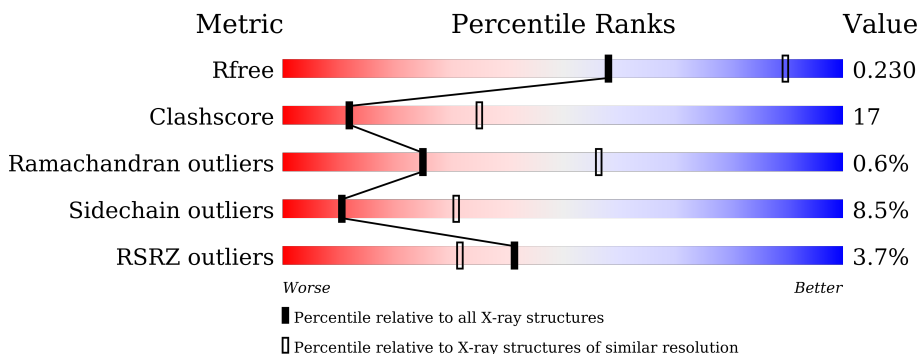
# 1 Overall quality at a glance

The following experimental techniques were used to determine the structure:

*X-RAY DIFFRACTION*

The reported resolution of this entry is 2.80 Å.

Percentile scores (ranging between 0-100) for global validation metrics of the entry are shown in the following graphic. The table shows the number of entries on which the scores are based.





Metric	Whole archive (#Entries)	Similar resolution (#Entries, resolution range(Å))
$R_{free}$	130704	3140 (2.80-2.80)
Clashscore	141614	3569 (2.80-2.80)
Ramachandran outliers	138981	3498 (2.80-2.80)
Sidechain outliers	138945	3500 (2.80-2.80)
RSRZ outliers	127900	3078 (2.80-2.80)

The table below summarises the geometric issues observed across the polymeric chains and their fit to the electron density. The red, orange, yellow and green segments of the lower bar indicate the fraction of residues that contain outliers for  $\geq 3$ , 2, 1 and 0 types of geometric quality criteria respectively. A grey segment represents the fraction of residues that are not modelled. The numeric value for each fraction is indicated below the corresponding segment, with a dot representing fractions  $\leq 5\%$ . The upper red bar (where present) indicates the fraction of residues that have poor fit to the electron density. The numeric value is given above the bar.

Mol	Chain	Length	Quality of chain
1	A	343	 5% 56% 18% 23%
1	B	343	 5% 62% 32% 5% 5%
1	C	343	 5% 57% 17% 23%
1	D	343	 5% 66% 28% 5% 5%
1	E	343	 5% 52% 24% 22%
1	F	343	 7% 62% 29% 5% 5%

*Continued on next page...*

*Continued from previous page...*

Mol	Chain	Length	Quality of chain
1	G	343	
1	H	343	

## 2 Entry composition [i](#)

There are 3 unique types of molecules in this entry. The entry contains 19608 atoms, of which 0 are hydrogens and 0 are deuteriums.

In the tables below, the ZeroOcc column contains the number of atoms modelled with zero occupancy, the AltConf column contains the number of residues with at least one atom in alternate conformation and the Trace column contains the number of residues modelled with at most 2 atoms.

- Molecule 1 is a protein called MoeN5,DNA-binding protein 7d.

Mol	Chain	Residues	Atoms					ZeroOcc	AltConf	Trace
			Total	C	N	O	S			
1	A	264	2010	1240	374	385	11	0	0	0
1	B	334	2549	1582	466	487	14	0	0	0
1	C	265	2017	1245	375	386	11	0	0	0
1	D	333	2540	1576	464	486	14	0	0	0
1	E	269	2057	1269	387	390	11	0	0	0
1	F	332	2534	1573	464	483	14	0	0	0
1	G	263	2003	1237	373	382	11	0	0	0
1	H	333	2542	1577	465	486	14	0	0	0

There are 152 discrepancies between the modelled and reference sequences:

Chain	Residue	Modelled	Actual	Comment	Reference
A	-13	MET	-	expression tag	UNP A0A010
A	-12	ALA	-	expression tag	UNP A0A010
A	-11	HIS	-	expression tag	UNP A0A010
A	-10	HIS	-	expression tag	UNP A0A010
A	-9	HIS	-	expression tag	UNP A0A010
A	-8	HIS	-	expression tag	UNP A0A010
A	-7	HIS	-	expression tag	UNP A0A010
A	-6	HIS	-	expression tag	UNP A0A010
A	-5	VAL	-	expression tag	UNP A0A010
A	-4	ASP	-	expression tag	UNP A0A010
A	-3	ASP	-	expression tag	UNP A0A010
A	-2	ASP	-	expression tag	UNP A0A010
A	-1	ASP	-	expression tag	UNP A0A010

*Continued on next page...*

*Continued from previous page...*

Chain	Residue	Modelled	Actual	Comment	Reference
A	0	LYS	-	expression tag	UNP A0A010
A	261	ALA	-	linker	UNP A0A010
A	262	GLY	-	linker	UNP A0A010
A	263	ALA	-	linker	UNP A0A010
A	264	GLY	-	linker	UNP A0A010
A	265	ALA	-	linker	UNP A0A010
B	-13	MET	-	expression tag	UNP A0A010
B	-12	ALA	-	expression tag	UNP A0A010
B	-11	HIS	-	expression tag	UNP A0A010
B	-10	HIS	-	expression tag	UNP A0A010
B	-9	HIS	-	expression tag	UNP A0A010
B	-8	HIS	-	expression tag	UNP A0A010
B	-7	HIS	-	expression tag	UNP A0A010
B	-6	HIS	-	expression tag	UNP A0A010
B	-5	VAL	-	expression tag	UNP A0A010
B	-4	ASP	-	expression tag	UNP A0A010
B	-3	ASP	-	expression tag	UNP A0A010
B	-2	ASP	-	expression tag	UNP A0A010
B	-1	ASP	-	expression tag	UNP A0A010
B	0	LYS	-	expression tag	UNP A0A010
B	261	ALA	-	linker	UNP A0A010
B	262	GLY	-	linker	UNP A0A010
B	263	ALA	-	linker	UNP A0A010
B	264	GLY	-	linker	UNP A0A010
B	265	ALA	-	linker	UNP A0A010
C	-13	MET	-	expression tag	UNP A0A010
C	-12	ALA	-	expression tag	UNP A0A010
C	-11	HIS	-	expression tag	UNP A0A010
C	-10	HIS	-	expression tag	UNP A0A010
C	-9	HIS	-	expression tag	UNP A0A010
C	-8	HIS	-	expression tag	UNP A0A010
C	-7	HIS	-	expression tag	UNP A0A010
C	-6	HIS	-	expression tag	UNP A0A010
C	-5	VAL	-	expression tag	UNP A0A010
C	-4	ASP	-	expression tag	UNP A0A010
C	-3	ASP	-	expression tag	UNP A0A010
C	-2	ASP	-	expression tag	UNP A0A010
C	-1	ASP	-	expression tag	UNP A0A010
C	0	LYS	-	expression tag	UNP A0A010
C	261	ALA	-	linker	UNP A0A010
C	262	GLY	-	linker	UNP A0A010
C	263	ALA	-	linker	UNP A0A010

*Continued on next page...*

*Continued from previous page...*

Chain	Residue	Modelled	Actual	Comment	Reference
C	264	GLY	-	linker	UNP A0A010
C	265	ALA	-	linker	UNP A0A010
D	-13	MET	-	expression tag	UNP A0A010
D	-12	ALA	-	expression tag	UNP A0A010
D	-11	HIS	-	expression tag	UNP A0A010
D	-10	HIS	-	expression tag	UNP A0A010
D	-9	HIS	-	expression tag	UNP A0A010
D	-8	HIS	-	expression tag	UNP A0A010
D	-7	HIS	-	expression tag	UNP A0A010
D	-6	HIS	-	expression tag	UNP A0A010
D	-5	VAL	-	expression tag	UNP A0A010
D	-4	ASP	-	expression tag	UNP A0A010
D	-3	ASP	-	expression tag	UNP A0A010
D	-2	ASP	-	expression tag	UNP A0A010
D	-1	ASP	-	expression tag	UNP A0A010
D	0	LYS	-	expression tag	UNP A0A010
D	261	ALA	-	linker	UNP A0A010
D	262	GLY	-	linker	UNP A0A010
D	263	ALA	-	linker	UNP A0A010
D	264	GLY	-	linker	UNP A0A010
D	265	ALA	-	linker	UNP A0A010
E	-13	MET	-	expression tag	UNP A0A010
E	-12	ALA	-	expression tag	UNP A0A010
E	-11	HIS	-	expression tag	UNP A0A010
E	-10	HIS	-	expression tag	UNP A0A010
E	-9	HIS	-	expression tag	UNP A0A010
E	-8	HIS	-	expression tag	UNP A0A010
E	-7	HIS	-	expression tag	UNP A0A010
E	-6	HIS	-	expression tag	UNP A0A010
E	-5	VAL	-	expression tag	UNP A0A010
E	-4	ASP	-	expression tag	UNP A0A010
E	-3	ASP	-	expression tag	UNP A0A010
E	-2	ASP	-	expression tag	UNP A0A010
E	-1	ASP	-	expression tag	UNP A0A010
E	0	LYS	-	expression tag	UNP A0A010
E	261	ALA	-	linker	UNP A0A010
E	262	GLY	-	linker	UNP A0A010
E	263	ALA	-	linker	UNP A0A010
E	264	GLY	-	linker	UNP A0A010
E	265	ALA	-	linker	UNP A0A010
F	-13	MET	-	expression tag	UNP A0A010
F	-12	ALA	-	expression tag	UNP A0A010

*Continued on next page...*

*Continued from previous page...*

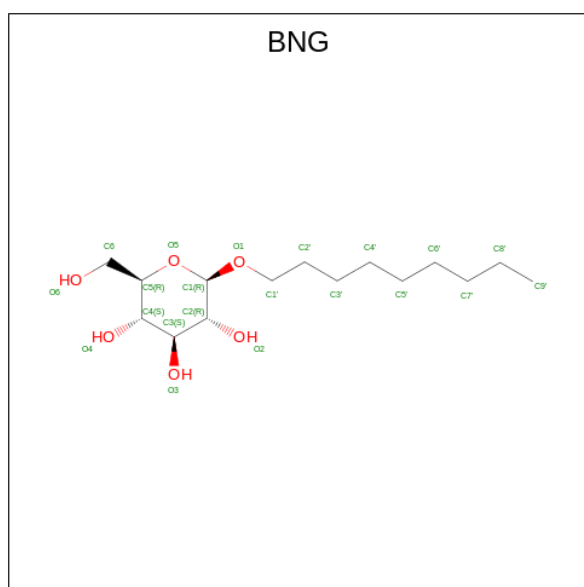
Chain	Residue	Modelled	Actual	Comment	Reference
F	-11	HIS	-	expression tag	UNP A0A010
F	-10	HIS	-	expression tag	UNP A0A010
F	-9	HIS	-	expression tag	UNP A0A010
F	-8	HIS	-	expression tag	UNP A0A010
F	-7	HIS	-	expression tag	UNP A0A010
F	-6	HIS	-	expression tag	UNP A0A010
F	-5	VAL	-	expression tag	UNP A0A010
F	-4	ASP	-	expression tag	UNP A0A010
F	-3	ASP	-	expression tag	UNP A0A010
F	-2	ASP	-	expression tag	UNP A0A010
F	-1	ASP	-	expression tag	UNP A0A010
F	0	LYS	-	expression tag	UNP A0A010
F	261	ALA	-	linker	UNP A0A010
F	262	GLY	-	linker	UNP A0A010
F	263	ALA	-	linker	UNP A0A010
F	264	GLY	-	linker	UNP A0A010
F	265	ALA	-	linker	UNP A0A010
G	-13	MET	-	expression tag	UNP A0A010
G	-12	ALA	-	expression tag	UNP A0A010
G	-11	HIS	-	expression tag	UNP A0A010
G	-10	HIS	-	expression tag	UNP A0A010
G	-9	HIS	-	expression tag	UNP A0A010
G	-8	HIS	-	expression tag	UNP A0A010
G	-7	HIS	-	expression tag	UNP A0A010
G	-6	HIS	-	expression tag	UNP A0A010
G	-5	VAL	-	expression tag	UNP A0A010
G	-4	ASP	-	expression tag	UNP A0A010
G	-3	ASP	-	expression tag	UNP A0A010
G	-2	ASP	-	expression tag	UNP A0A010
G	-1	ASP	-	expression tag	UNP A0A010
G	0	LYS	-	expression tag	UNP A0A010
G	261	ALA	-	linker	UNP A0A010
G	262	GLY	-	linker	UNP A0A010
G	263	ALA	-	linker	UNP A0A010
G	264	GLY	-	linker	UNP A0A010
G	265	ALA	-	linker	UNP A0A010
H	-13	MET	-	expression tag	UNP A0A010
H	-12	ALA	-	expression tag	UNP A0A010
H	-11	HIS	-	expression tag	UNP A0A010
H	-10	HIS	-	expression tag	UNP A0A010
H	-9	HIS	-	expression tag	UNP A0A010
H	-8	HIS	-	expression tag	UNP A0A010

*Continued on next page...*

Continued from previous page...

Chain	Residue	Modelled	Actual	Comment	Reference
H	-7	HIS	-	expression tag	UNP A0A010
H	-6	HIS	-	expression tag	UNP A0A010
H	-5	VAL	-	expression tag	UNP A0A010
H	-4	ASP	-	expression tag	UNP A0A010
H	-3	ASP	-	expression tag	UNP A0A010
H	-2	ASP	-	expression tag	UNP A0A010
H	-1	ASP	-	expression tag	UNP A0A010
H	0	LYS	-	expression tag	UNP A0A010
H	261	ALA	-	linker	UNP A0A010
H	262	GLY	-	linker	UNP A0A010
H	263	ALA	-	linker	UNP A0A010
H	264	GLY	-	linker	UNP A0A010
H	265	ALA	-	linker	UNP A0A010

- Molecule 2 is nonyl beta-D-glucopyranoside (three-letter code: BNG) (formula: C<sub>15</sub>H<sub>30</sub>O<sub>6</sub>).



Mol	Chain	Residues	Atoms			ZeroOcc	AltConf
2	A	1	Total	C	O	0	0
			21	15	6		
2	A	1	Total	C	O	0	0
			21	15	6		
2	B	1	Total	C	O	0	0
			21	15	6		
2	B	1	Total	C	O	0	0
			21	15	6		
2	C	1	Total	C	O	0	0
			21	15	6		

Continued on next page...



*Continued from previous page...*

Mol	Chain	Residues	Atoms			ZeroOcc	AltConf
2	C	1	Total	C	O	0	0
			21	15	6		
2	D	1	Total	C	O	0	0
			21	15	6		
2	D	1	Total	C	O	0	0
			21	15	6		
2	E	1	Total	C	O	0	0
			21	15	6		
2	F	1	Total	C	O	0	0
			21	15	6		
2	G	1	Total	C	O	0	0
			21	15	6		
2	H	1	Total	C	O	0	0
			21	15	6		
2	H	1	Total	C	O	0	0
			21	15	6		

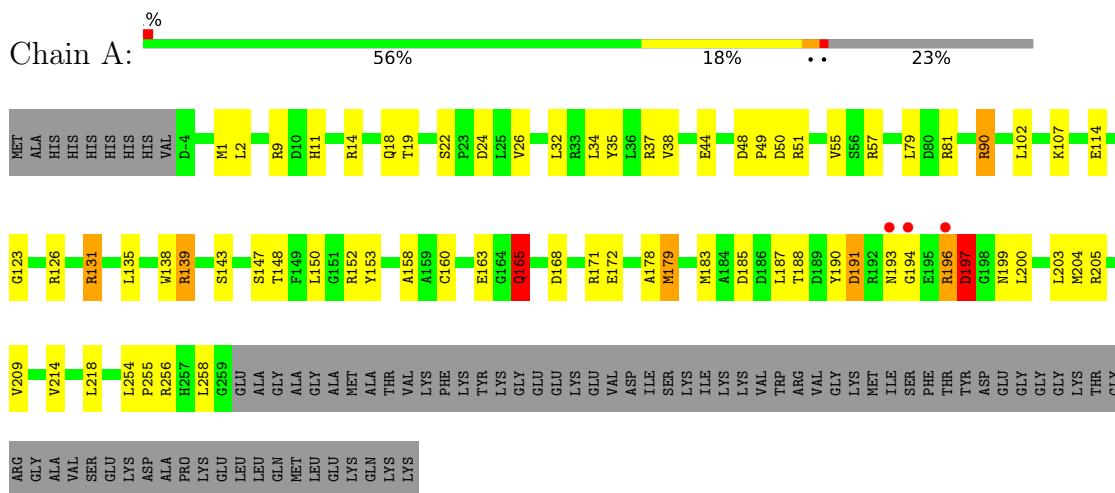
- Molecule 3 is water.

Mol	Chain	Residues	Atoms		ZeroOcc	AltConf
3	A	149	Total	O	0	0
			149	149		
3	B	144	Total	O	0	0
			144	144		
3	C	138	Total	O	0	0
			138	138		
3	D	142	Total	O	0	0
			142	142		
3	E	94	Total	O	0	0
			94	94		
3	F	167	Total	O	0	0
			167	167		
3	G	99	Total	O	0	0
			99	99		
3	H	150	Total	O	0	0
			150	150		

### 3 Residue-property plots

These plots are drawn for all protein, RNA, DNA and oligosaccharide chains in the entry. The first graphic for a chain summarises the proportions of the various outlier classes displayed in the second graphic. The second graphic shows the sequence view annotated by issues in geometry and electron density. Residues are color-coded according to the number of geometric quality criteria for which they contain at least one outlier: green = 0, yellow = 1, orange = 2 and red = 3 or more. A red dot above a residue indicates a poor fit to the electron density ( $RSRZ > 2$ ). Stretches of 2 or more consecutive residues without any outlier are shown as a green connector. Residues present in the sample, but not in the model, are shown in grey.

- Molecule 1: MoeN5,DNA-binding protein 7d

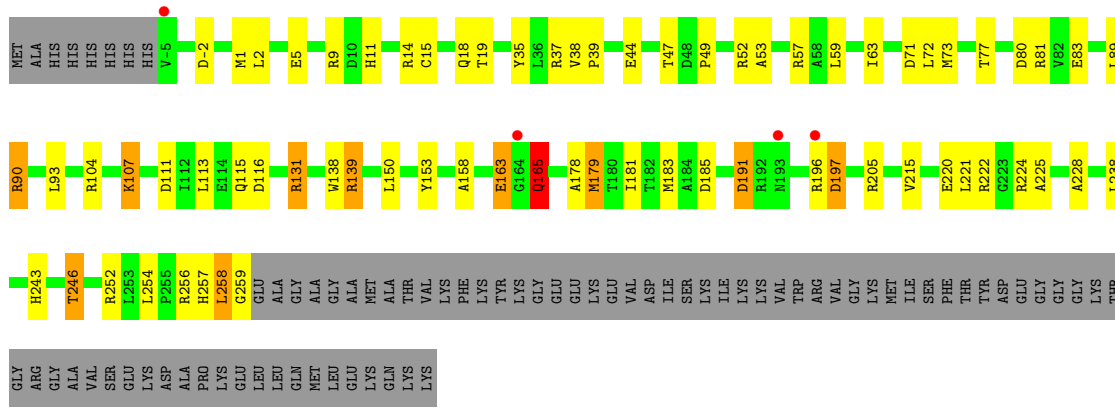


- Molecule 1: MoeN5,DNA-binding protein 7d

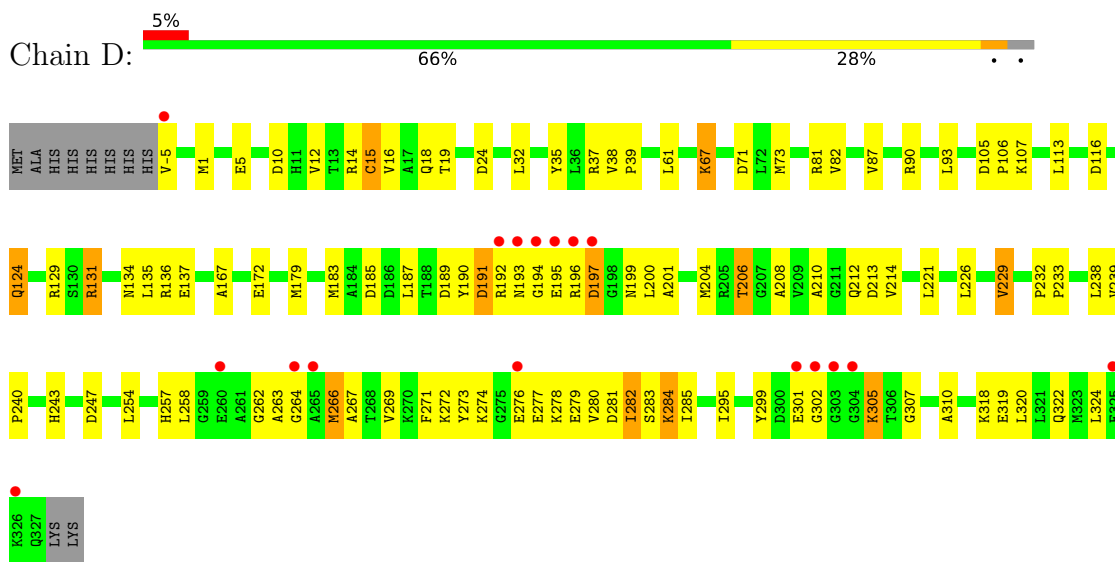


- Molecule 1: MoeN5,DNA-binding protein 7d

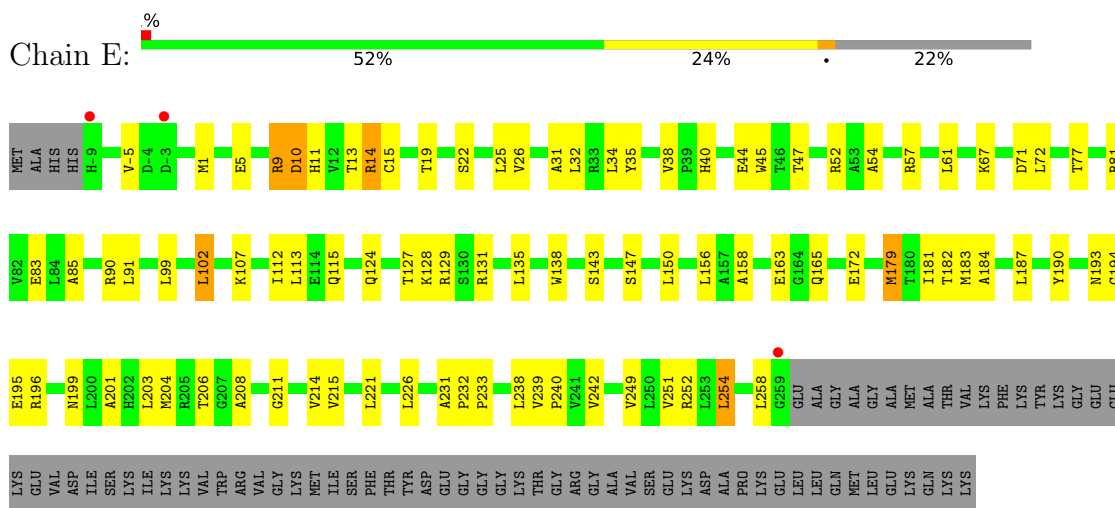




• Molecule 1: MoeN5,DNA-binding protein 7d

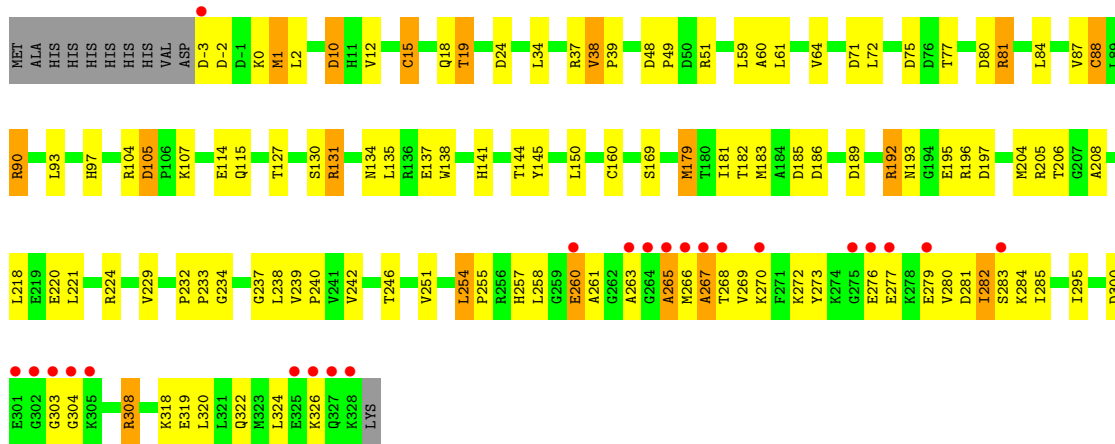


• Molecule 1: MoeN5,DNA-binding protein 7d

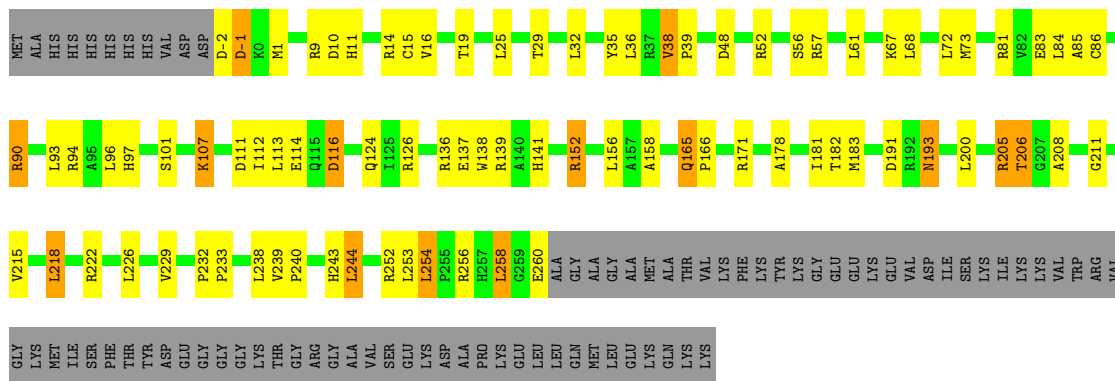


• Molecule 1: MoeN5,DNA-binding protein 7d

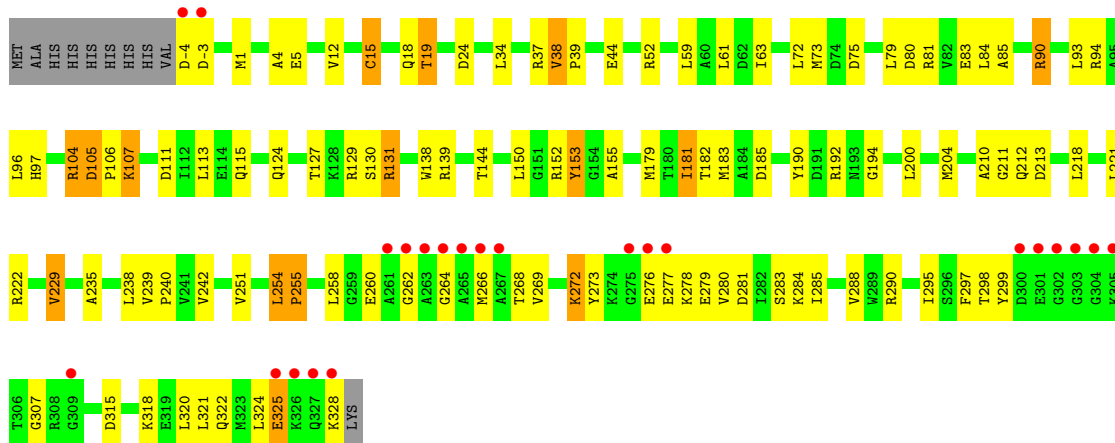




• Molecule 1: MoeN5,DNA-binding protein 7d



• Molecule 1: MoeN5,DNA-binding protein 7d



## 4 Data and refinement statistics

Property	Value	Source
Space group	I 2 2 2	Depositor
Cell constants a, b, c, $\alpha$ , $\beta$ , $\gamma$	142.17Å 205.81Å 220.08Å 90.00° 90.00° 90.00°	Depositor
Resolution (Å)	25.00 – 2.80 24.89 – 2.80	Depositor EDS
% Data completeness (in resolution range)	97.1 (25.00-2.80) 97.0 (24.89-2.80)	Depositor EDS
$R_{merge}$	0.08	Depositor
$R_{sym}$	(Not available)	Depositor
$\langle I/\sigma(I) \rangle$ <sup>1</sup>	3.57 (at 2.80Å)	Xtrriage
Refinement program	CNS	Depositor
R, $R_{free}$	0.170 , 0.232 0.167 , 0.230	Depositor DCC
$R_{free}$ test set	3913 reflections (5.07%)	wwPDB-VP
Wilson B-factor (Å <sup>2</sup> )	41.5	Xtrriage
Anisotropy	0.223	Xtrriage
Bulk solvent $k_{sol}$ (e/Å <sup>3</sup> ), $B_{sol}$ (Å <sup>2</sup> )	0.32 , 52.2	EDS
L-test for twinning <sup>2</sup>	$\langle  L  \rangle = 0.49$ , $\langle L^2 \rangle = 0.32$	Xtrriage
Estimated twinning fraction	No twinning to report.	Xtrriage
$F_o, F_c$ correlation	0.96	EDS
Total number of atoms	19608	wwPDB-VP
Average B, all atoms (Å <sup>2</sup> )	45.0	wwPDB-VP

Xtrriage's analysis on translational NCS is as follows: *The analyses of the Patterson function reveals a significant off-origin peak that is 43.72 % of the origin peak, indicating pseudo-translational symmetry. The chance of finding a peak of this or larger height randomly in a structure without pseudo-translational symmetry is equal to 1.6927e-04. The detected translational NCS is most likely also responsible for the elevated intensity ratio.*

<sup>1</sup>Intensities estimated from amplitudes.

<sup>2</sup>Theoretical values of  $\langle |L| \rangle$ ,  $\langle L^2 \rangle$  for acentric reflections are 0.5, 0.333 respectively for untwinned datasets, and 0.375, 0.2 for perfectly twinned datasets.

## 5 Model quality i

### 5.1 Standard geometry i

Bond lengths and bond angles in the following residue types are not validated in this section: BNG

The Z score for a bond length (or angle) is the number of standard deviations the observed value is removed from the expected value. A bond length (or angle) with  $|Z| > 5$  is considered an outlier worth inspection. RMSZ is the root-mean-square of all Z scores of the bond lengths (or angles).

Mol	Chain	Bond lengths		Bond angles	
		RMSZ	# Z  >5	RMSZ	# Z  >5
1	A	0.84	0/2042	0.95	1/2775 (0.0%)
1	B	0.81	1/2588 (0.0%)	0.94	3/3499 (0.1%)
1	C	0.91	1/2049 (0.0%)	1.00	4/2785 (0.1%)
1	D	0.78	0/2579	0.90	1/3488 (0.0%)
1	E	0.85	0/2093	0.96	2/2845 (0.1%)
1	F	0.82	1/2573 (0.0%)	0.94	3/3478 (0.1%)
1	G	0.85	1/2035 (0.0%)	1.00	4/2765 (0.1%)
1	H	0.83	1/2581 (0.0%)	0.94	3/3489 (0.1%)
All	All	0.83	5/18540 (0.0%)	0.95	21/25124 (0.1%)

Chiral center outliers are detected by calculating the chiral volume of a chiral center and verifying if the center is modelled as a planar moiety or with the opposite hand. A planarity outlier is detected by checking planarity of atoms in a peptide group, atoms in a mainchain group or atoms of a sidechain that are expected to be planar.

Mol	Chain	#Chirality outliers	#Planarity outliers
1	A	0	1
1	C	0	1
1	H	0	1
All	All	0	3

All (5) bond length outliers are listed below:

Mol	Chain	Res	Type	Atoms	Z	Observed(Å)	Ideal(Å)
1	F	15	CYS	CB-SG	-7.38	1.69	1.82
1	B	15	CYS	CB-SG	-6.94	1.70	1.82
1	G	15	CYS	CB-SG	-6.85	1.70	1.82
1	H	15	CYS	CB-SG	-6.50	1.71	1.82
1	C	15	CYS	CB-SG	-5.21	1.73	1.81

The worst 5 of 21 bond angle outliers are listed below:

Mol	Chain	Res	Type	Atoms	Z	Observed(°)	Ideal(°)
1	F	81	ARG	NE-CZ-NH2	8.16	124.38	120.30
1	G	-1	ASP	C-N-CA	7.72	140.99	121.70
1	F	80	ASP	CB-CG-OD1	6.78	124.40	118.30
1	F	10	ASP	CB-CG-OD2	-6.03	112.87	118.30
1	H	111	ASP	CB-CG-OD2	-5.96	112.94	118.30

There are no chirality outliers.

All (3) planarity outliers are listed below:

Mol	Chain	Res	Type	Group
1	A	153	TYR	Sidechain
1	C	153	TYR	Sidechain
1	H	153	TYR	Sidechain

## 5.2 Too-close contacts [i](#)

In the following table, the Non-H and H(model) columns list the number of non-hydrogen atoms and hydrogen atoms in the chain respectively. The H(added) column lists the number of hydrogen atoms added and optimized by MolProbity. The Clashes column lists the number of clashes within the asymmetric unit, whereas Symm-Clashes lists symmetry-related clashes.

Mol	Chain	Non-H	H(model)	H(added)	Clashes	Symm-Clashes
1	A	2010	0	1990	67	0
1	B	2549	0	2554	99	0
1	C	2017	0	1999	59	0
1	D	2540	0	2541	98	0
1	E	2057	0	2027	80	0
1	F	2534	0	2541	104	0
1	G	2003	0	1988	76	0
1	H	2542	0	2545	85	0
2	A	42	0	60	4	0
2	B	42	0	60	3	0
2	C	42	0	60	6	0
2	D	42	0	60	7	0
2	E	21	0	30	2	0
2	F	21	0	30	3	0
2	G	21	0	30	2	0
2	H	42	0	60	7	0
3	A	149	0	0	7	0
3	B	144	0	0	2	0
3	C	138	0	0	5	0
3	D	142	0	0	3	0

*Continued on next page...*

Continued from previous page...

Mol	Chain	Non-H	H(model)	H(added)	Clashes	Symm-Clashes
3	E	94	0	0	1	0
3	F	167	0	0	6	0
3	G	99	0	0	2	0
3	H	150	0	0	2	0
All	All	19608	0	18575	641	0

The all-atom clashscore is defined as the number of clashes found per 1000 atoms (including hydrogen atoms). The all-atom clashscore for this structure is 17.

The worst 5 of 641 close contacts within the same asymmetric unit are listed below, sorted by their clash magnitude.

Atom-1	Atom-2	Interatomic distance (Å)	Clash overlap (Å)
1:B:183:MET:SD	1:B:183:MET:CE	2.03	1.47
2:A:501:BNG:H9'3	2:A:501:BNG:H4'1	1.32	1.04
1:G:126:ARG:NH1	3:G:501:HOH:O	1.93	0.99
1:C:158:ALA:HA	1:C:165:GLN:HG2	1.48	0.96
2:D:501:BNG:H9'2	2:D:501:BNG:H4'1	1.47	0.95

There are no symmetry-related clashes.

## 5.3 Torsion angles [i](#)

### 5.3.1 Protein backbone [i](#)

In the following table, the Percentiles column shows the percent Ramachandran outliers of the chain as a percentile score with respect to all X-ray entries followed by that with respect to entries of similar resolution.

The Analysed column shows the number of residues for which the backbone conformation was analysed, and the total number of residues.

Mol	Chain	Analysed	Favoured	Allowed	Outliers	Percentiles
1	A	262/343 (76%)	251 (96%)	10 (4%)	1 (0%)	34 66
1	B	332/343 (97%)	314 (95%)	15 (4%)	3 (1%)	17 46
1	C	263/343 (77%)	256 (97%)	7 (3%)	0	100 100
1	D	331/343 (96%)	312 (94%)	14 (4%)	5 (2%)	10 33
1	E	267/343 (78%)	258 (97%)	9 (3%)	0	100 100
1	F	330/343 (96%)	312 (94%)	14 (4%)	4 (1%)	13 39

Continued on next page...



Continued from previous page...

Mol	Chain	Analysed	Favoured	Allowed	Outliers	Percentiles	
1	G	261/343 (76%)	247 (95%)	14 (5%)	0	100	100
1	H	331/343 (96%)	312 (94%)	18 (5%)	1 (0%)	41	72
All	All	2377/2744 (87%)	2262 (95%)	101 (4%)	14 (1%)	25	56

5 of 14 Ramachandran outliers are listed below:

Mol	Chain	Res	Type
1	F	263	ALA
1	F	267	ALA
1	B	262	GLY
1	B	264	GLY
1	D	262	GLY

### 5.3.2 Protein sidechains [i](#)

In the following table, the Percentiles column shows the percent sidechain outliers of the chain as a percentile score with respect to all X-ray entries followed by that with respect to entries of similar resolution.

The Analysed column shows the number of residues for which the sidechain conformation was analysed, and the total number of residues.

Mol	Chain	Analysed	Rotameric	Outliers	Percentiles	
1	A	207/270 (77%)	192 (93%)	15 (7%)	14	38
1	B	262/270 (97%)	238 (91%)	24 (9%)	9	27
1	C	208/270 (77%)	192 (92%)	16 (8%)	13	35
1	D	261/270 (97%)	243 (93%)	18 (7%)	15	41
1	E	212/270 (78%)	196 (92%)	16 (8%)	13	37
1	F	260/270 (96%)	233 (90%)	27 (10%)	7	21
1	G	206/270 (76%)	188 (91%)	18 (9%)	10	30
1	H	261/270 (97%)	235 (90%)	26 (10%)	7	22
All	All	1877/2160 (87%)	1717 (92%)	160 (8%)	10	31

5 of 160 residues with a non-rotameric sidechain are listed below:

Mol	Chain	Res	Type
1	F	308	ARG
1	H	90	ARG

Continued on next page...

*Continued from previous page...*

Mol	Chain	Res	Type
1	G	90	ARG
1	G	218	LEU
1	H	144	THR

Sometimes sidechains can be flipped to improve hydrogen bonding and reduce clashes. 5 of 22 such sidechains are listed below:

Mol	Chain	Res	Type
1	E	40	HIS
1	G	97	HIS
1	F	193	ASN
1	G	165	GLN
1	B	124	GLN

### 5.3.3 RNA [i](#)

There are no RNA molecules in this entry.

### 5.4 Non-standard residues in protein, DNA, RNA chains [i](#)

There are no non-standard protein/DNA/RNA residues in this entry.

### 5.5 Carbohydrates [i](#)

There are no monosaccharides in this entry.

### 5.6 Ligand geometry [i](#)

13 ligands are modelled in this entry.

In the following table, the Counts columns list the number of bonds (or angles) for which Mogul statistics could be retrieved, the number of bonds (or angles) that are observed in the model and the number of bonds (or angles) that are defined in the Chemical Component Dictionary. The Link column lists molecule types, if any, to which the group is linked. The Z score for a bond length (or angle) is the number of standard deviations the observed value is removed from the expected value. A bond length (or angle) with  $|Z| > 2$  is considered an outlier worth inspection. RMSZ is the root-mean-square of all Z scores of the bond lengths (or angles).

Mol	Type	Chain	Res	Link	Bond lengths			Bond angles		
					Counts	RMSZ	$\# Z  > 2$	Counts	RMSZ	$\# Z  > 2$
2	BNG	C	501	-	21,21,21	1.17	1 (4%)	26,26,26	0.82	1 (3%)

Mol	Type	Chain	Res	Link	Bond lengths			Bond angles		
					Counts	RMSZ	# Z  > 2	Counts	RMSZ	# Z  > 2
2	BNG	E	401	-	21,21,21	0.96	1 (4%)	26,26,26	0.77	1 (3%)
2	BNG	G	401	-	21,21,21	0.89	1 (4%)	26,26,26	0.87	1 (3%)
2	BNG	D	501	-	21,21,21	1.04	1 (4%)	26,26,26	0.86	1 (3%)
2	BNG	B	502	-	21,21,21	0.86	1 (4%)	26,26,26	0.92	1 (3%)
2	BNG	H	502	-	21,21,21	0.81	1 (4%)	26,26,26	0.94	1 (3%)
2	BNG	D	502	-	21,21,21	0.98	1 (4%)	26,26,26	1.57	3 (11%)
2	BNG	H	501	-	21,21,21	1.21	1 (4%)	26,26,26	0.93	2 (7%)
2	BNG	F	401	-	21,21,21	0.95	1 (4%)	26,26,26	1.42	3 (11%)
2	BNG	A	501	-	21,21,21	1.05	1 (4%)	26,26,26	0.65	0
2	BNG	B	501	-	21,21,21	1.15	1 (4%)	26,26,26	0.75	0
2	BNG	C	502	-	21,21,21	0.83	1 (4%)	26,26,26	0.75	1 (3%)
2	BNG	A	502	-	21,21,21	0.86	1 (4%)	26,26,26	0.90	1 (3%)

In the following table, the Chirals column lists the number of chiral outliers, the number of chiral centers analysed, the number of these observed in the model and the number defined in the Chemical Component Dictionary. Similar counts are reported in the Torsion and Rings columns. '-' means no outliers of that kind were identified.

Mol	Type	Chain	Res	Link	Chirals	Torsions	Rings
2	BNG	C	501	-	-	7/12/32/32	0/1/1/1
2	BNG	E	401	-	-	7/12/32/32	0/1/1/1
2	BNG	G	401	-	-	5/12/32/32	0/1/1/1
2	BNG	D	501	-	-	8/12/32/32	0/1/1/1
2	BNG	B	502	-	-	8/12/32/32	0/1/1/1
2	BNG	H	502	-	-	8/12/32/32	0/1/1/1
2	BNG	D	502	-	-	8/12/32/32	0/1/1/1
2	BNG	H	501	-	-	9/12/32/32	0/1/1/1
2	BNG	F	401	-	-	9/12/32/32	0/1/1/1
2	BNG	A	501	-	-	10/12/32/32	0/1/1/1
2	BNG	B	501	-	-	11/12/32/32	0/1/1/1
2	BNG	C	502	-	-	10/12/32/32	0/1/1/1
2	BNG	A	502	-	-	5/12/32/32	0/1/1/1

The worst 5 of 13 bond length outliers are listed below:

Mol	Chain	Res	Type	Atoms	Z	Observed(Å)	Ideal(Å)
2	H	501	BNG	O1-C1'	4.16	1.54	1.43

Continued on next page...

*Continued from previous page...*

Mol	Chain	Res	Type	Atoms	Z	Observed(Å)	Ideal(Å)
2	B	501	BNG	O1-C1'	4.12	1.54	1.43
2	C	501	BNG	O1-C1'	4.02	1.54	1.43
2	D	501	BNG	O1-C1'	3.83	1.53	1.43
2	E	401	BNG	O1-C1'	3.82	1.53	1.43

The worst 5 of 16 bond angle outliers are listed below:

Mol	Chain	Res	Type	Atoms	Z	Observed(°)	Ideal(°)
2	D	502	BNG	C1'-O1-C1	-5.60	104.55	113.84
2	F	401	BNG	C1-C2-C3	3.88	118.08	110.00
2	F	401	BNG	C1'-O1-C1	-3.82	107.50	113.84
2	D	502	BNG	O1-C1-C2	3.34	113.52	108.30
2	B	502	BNG	C1'-O1-C1	-3.13	108.66	113.84

There are no chirality outliers.

5 of 105 torsion outliers are listed below:

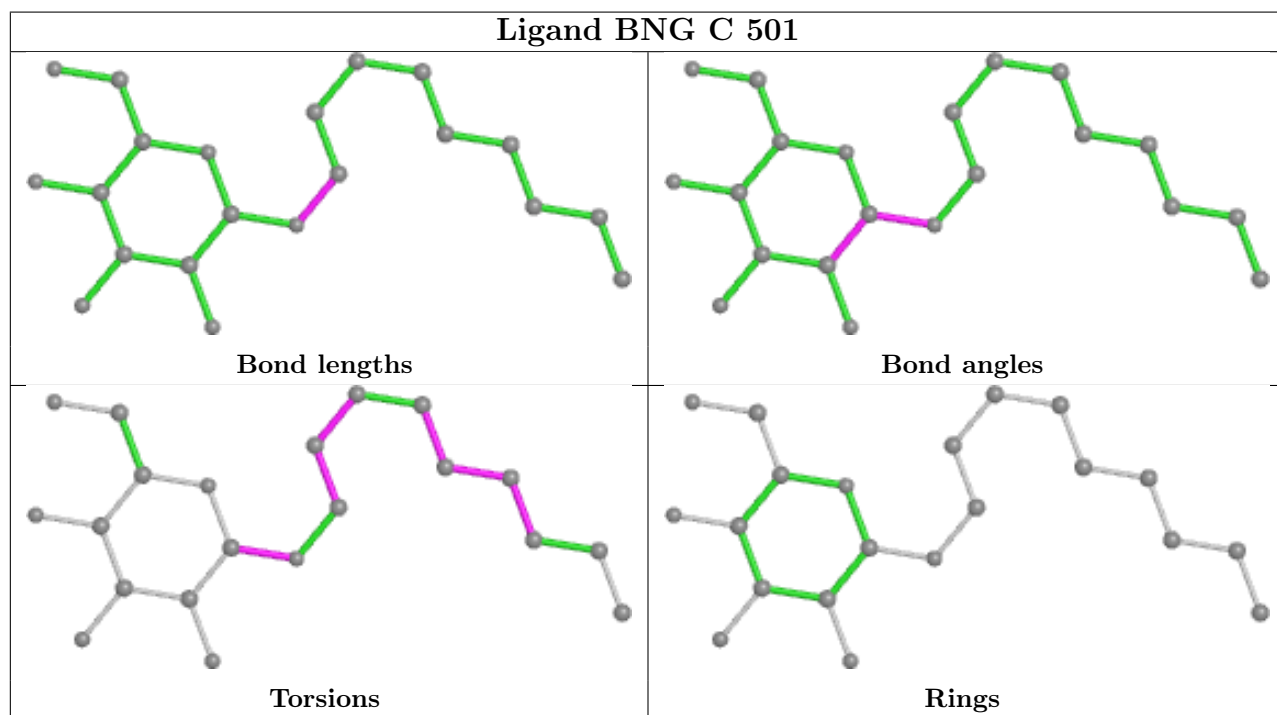
Mol	Chain	Res	Type	Atoms
2	A	502	BNG	C2-C1-O1-C1'
2	A	502	BNG	O5-C1-O1-C1'
2	B	502	BNG	C2-C1-O1-C1'
2	B	502	BNG	O5-C1-O1-C1'
2	C	501	BNG	C2-C1-O1-C1'

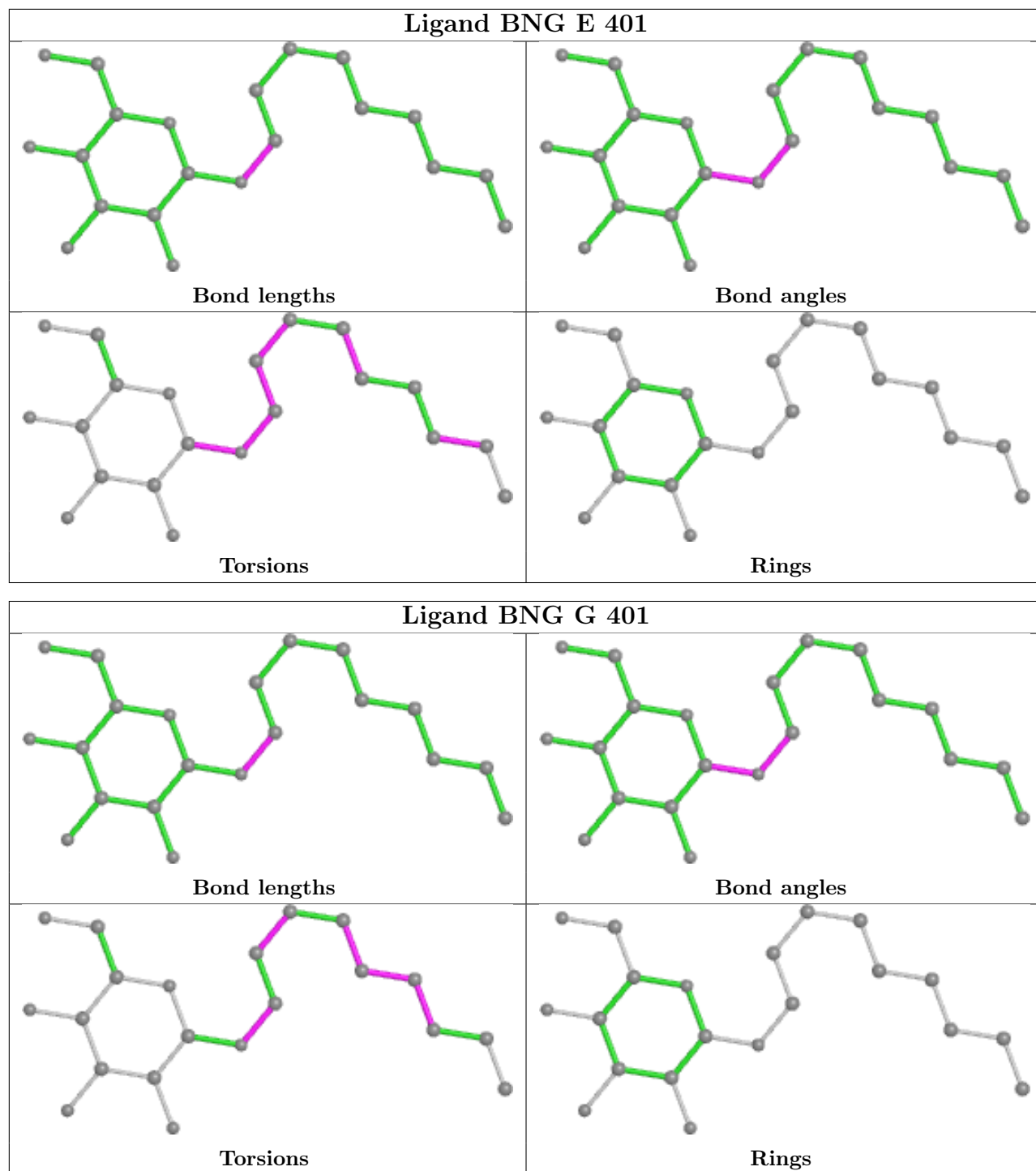
There are no ring outliers.

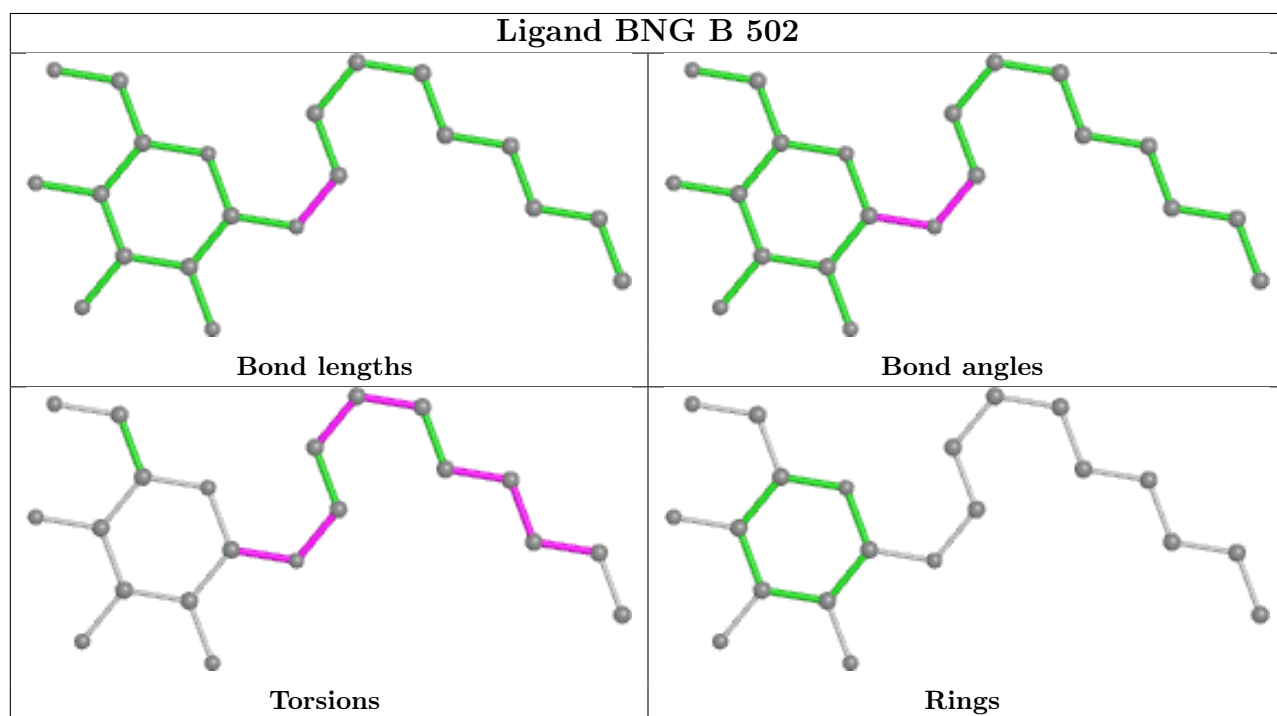
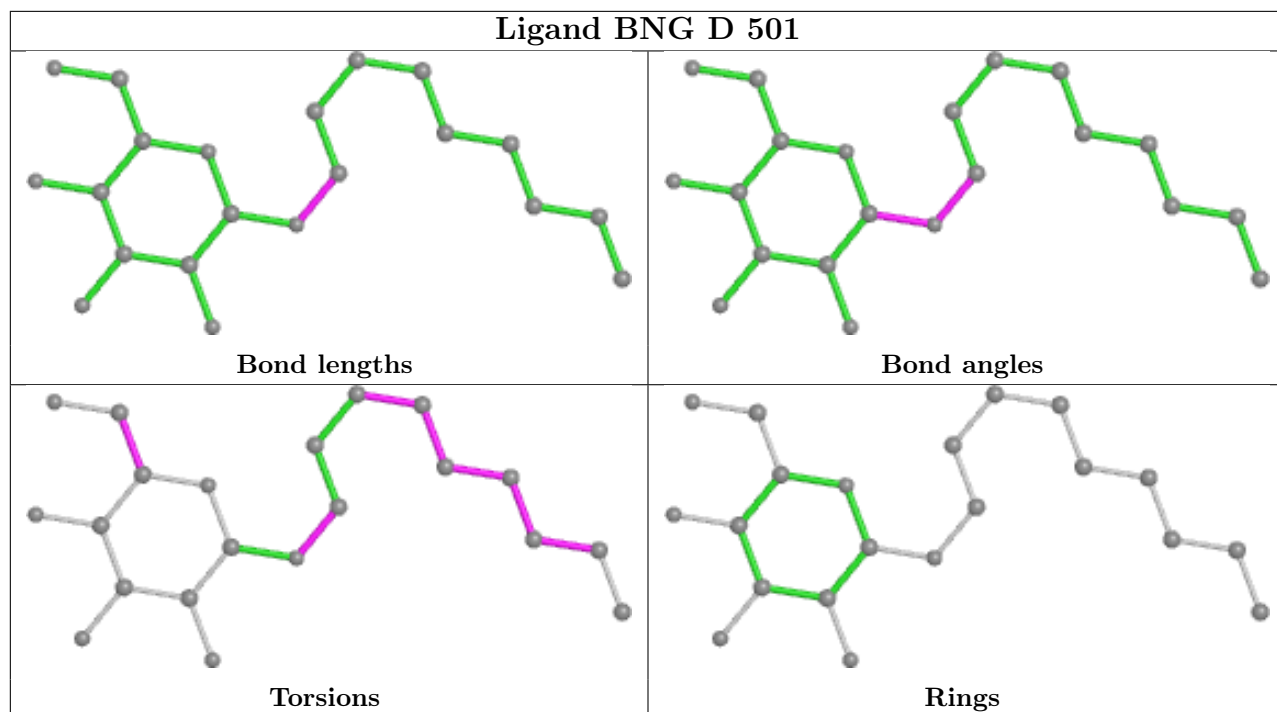
13 monomers are involved in 34 short contacts:

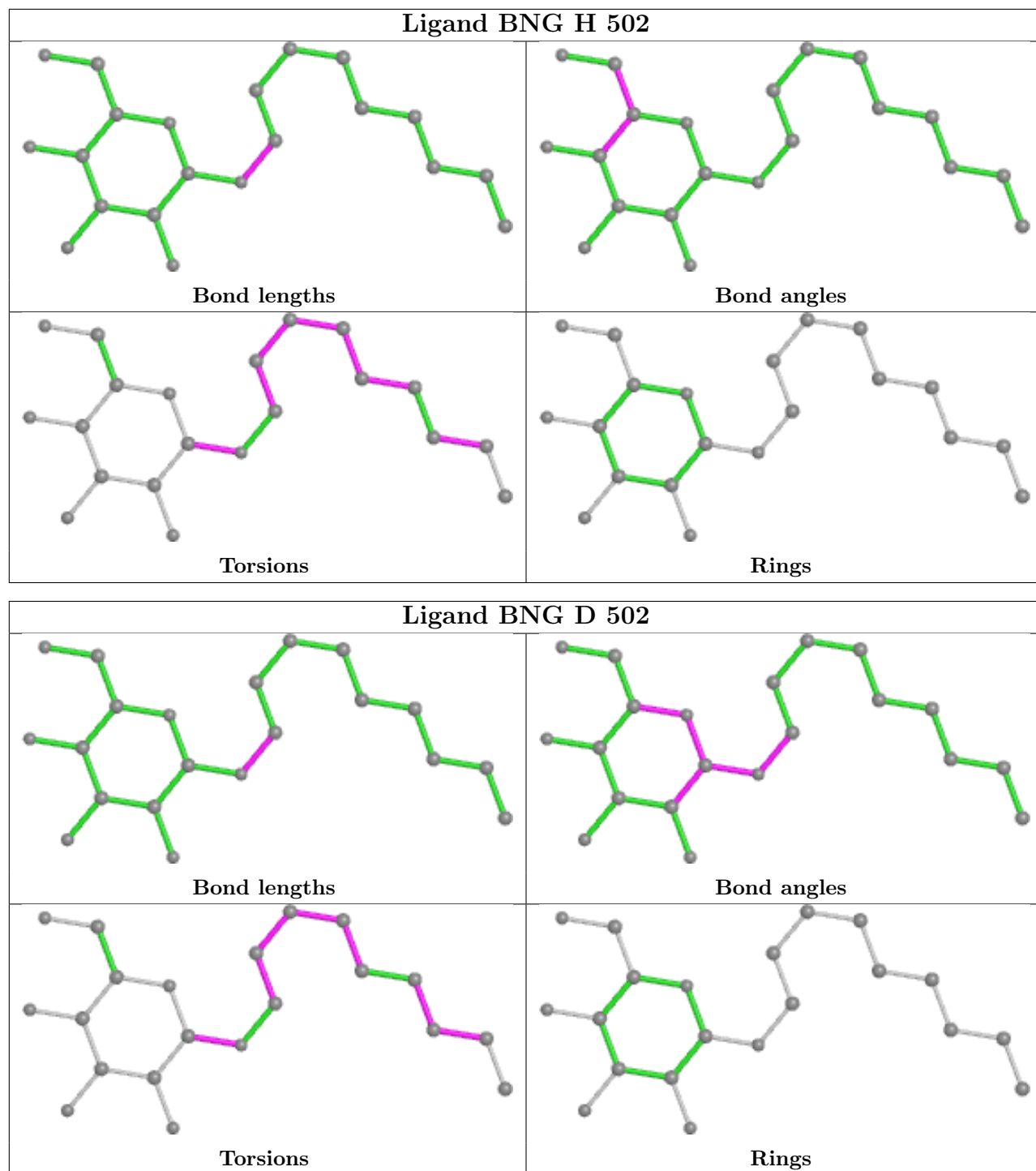
Mol	Chain	Res	Type	Clashes	Symm-Clashes
2	C	501	BNG	4	0
2	E	401	BNG	2	0
2	G	401	BNG	2	0
2	D	501	BNG	4	0
2	B	502	BNG	2	0
2	H	502	BNG	5	0
2	D	502	BNG	4	0
2	H	501	BNG	3	0
2	F	401	BNG	3	0
2	A	501	BNG	3	0
2	B	501	BNG	1	0
2	C	502	BNG	2	0
2	A	502	BNG	1	0

The following is a two-dimensional graphical depiction of Mogul quality analysis of bond lengths, bond angles, torsion angles, and ring geometry for all instances of the Ligand of Interest. In addition, ligands with molecular weight > 250 and outliers as shown on the validation Tables will also be included. For torsion angles, if less than 5% of the Mogul distribution of torsion angles is within 10 degrees of the torsion angle in question, then that torsion angle is considered an outlier. Any bond that is central to one or more torsion angles identified as an outlier by Mogul will be highlighted in the graph. For rings, the root-mean-square deviation (RMSD) between the ring in question and similar rings identified by Mogul is calculated over all ring torsion angles. If the average RMSD is greater than 60 degrees and the minimal RMSD between the ring in question and any Mogul-identified rings is also greater than 60 degrees, then that ring is considered an outlier. The outliers are highlighted in purple. The color gray indicates Mogul did not find sufficient equivalents in the CSD to analyse the geometry.

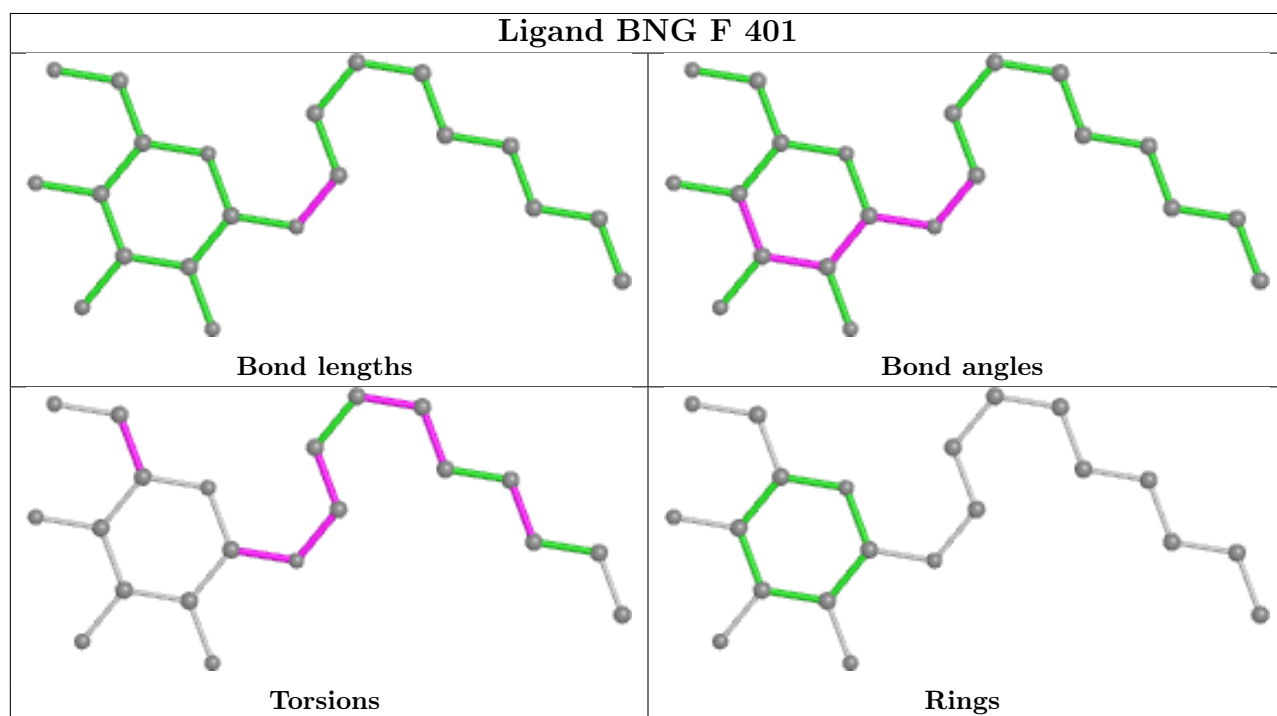
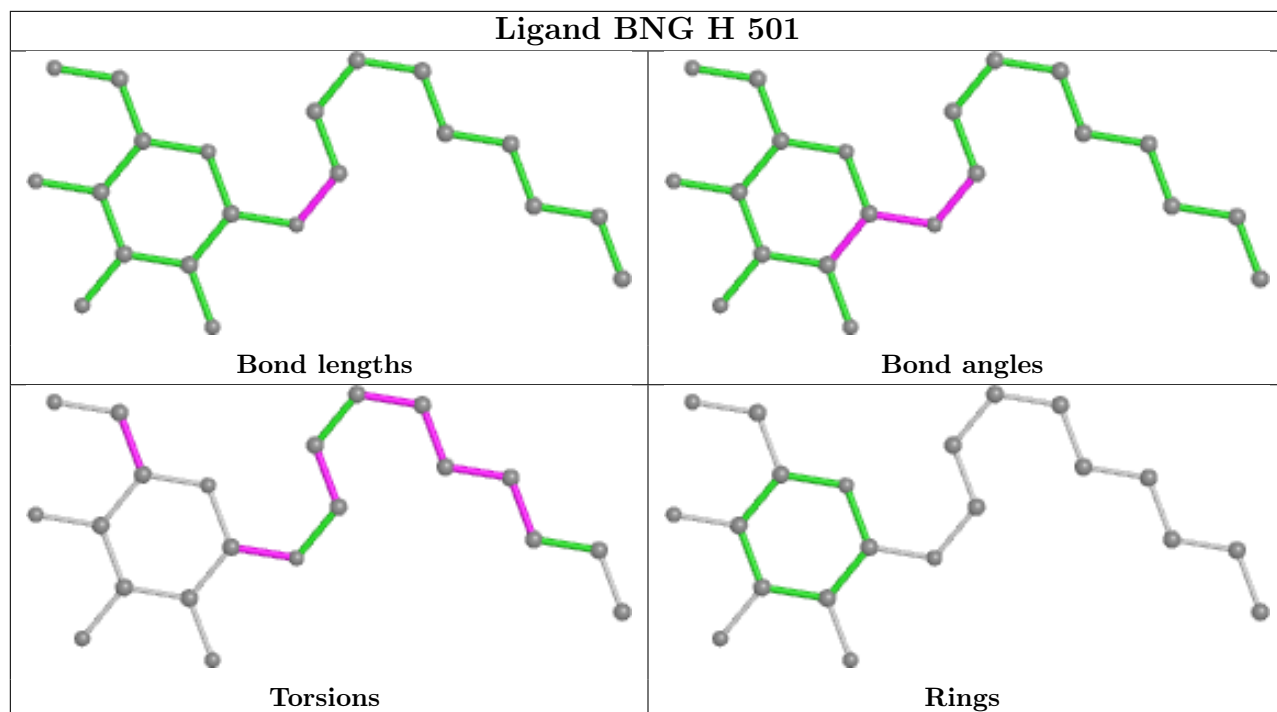


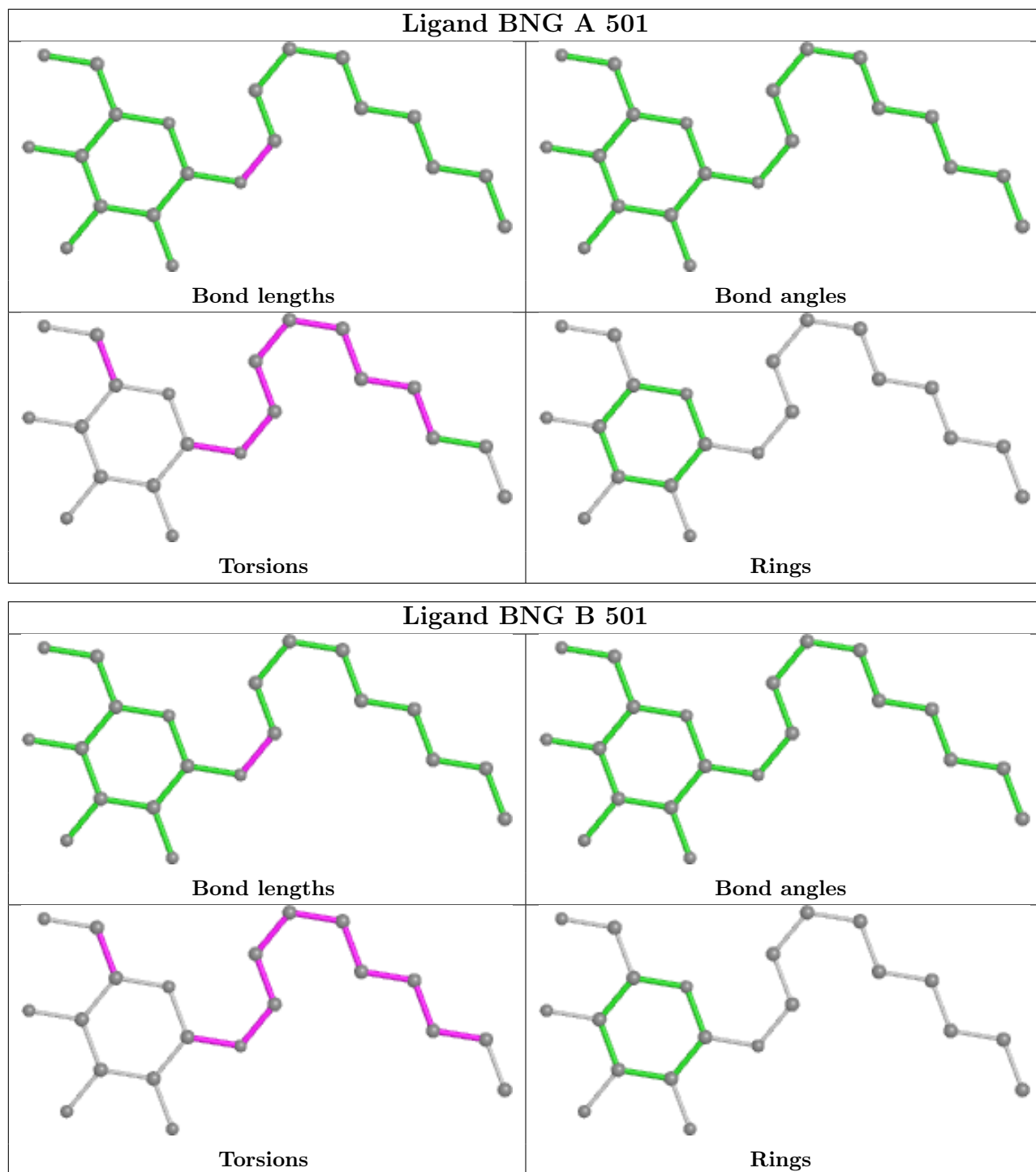


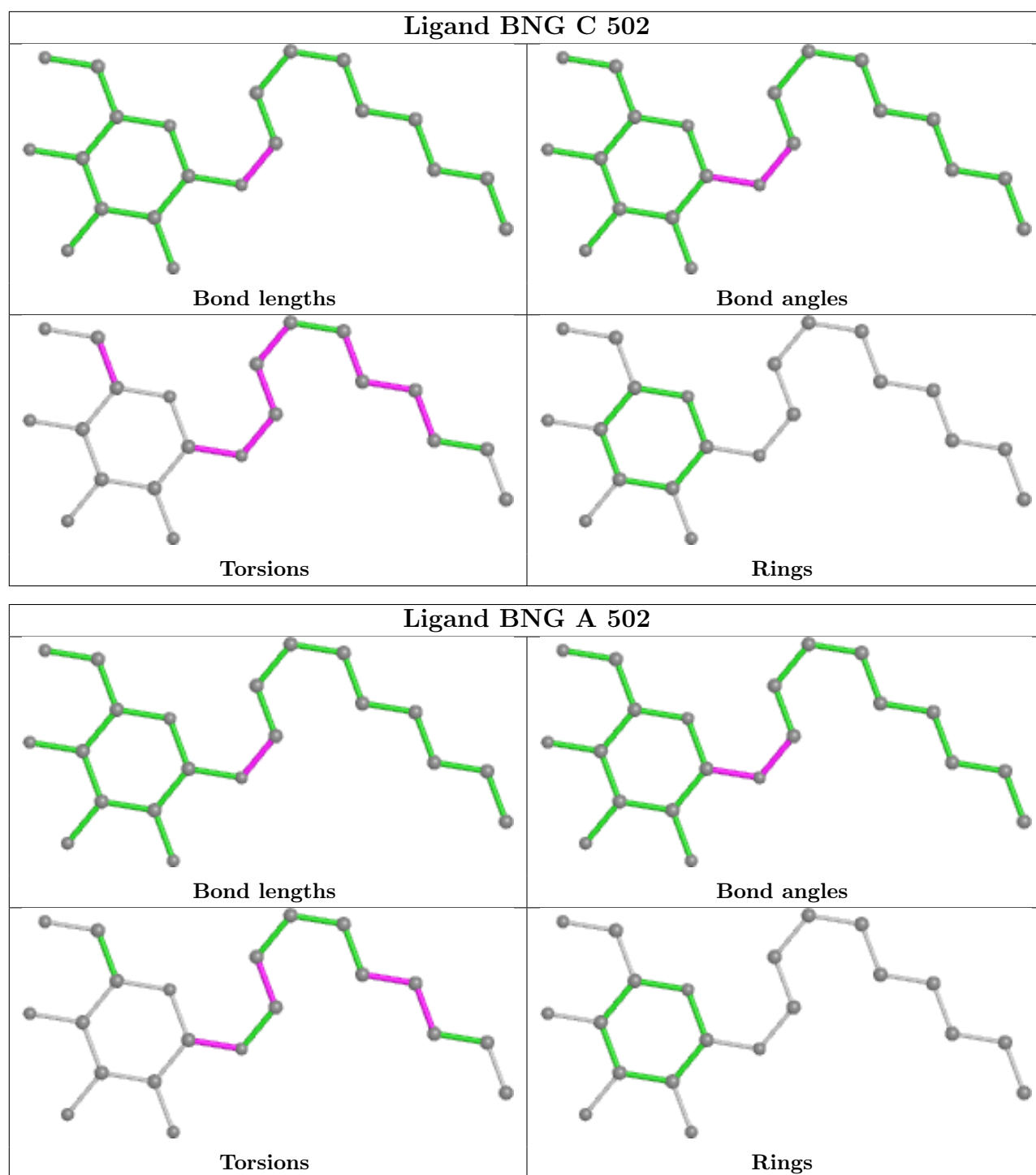












## 5.7 Other polymers [i](#)

There are no such residues in this entry.

## 5.8 Polymer linkage issues [i](#)

There are no chain breaks in this entry.

## 6 Fit of model and data [i](#)

### 6.1 Protein, DNA and RNA chains [i](#)

In the following table, the column labelled ‘#RSRZ > 2’ contains the number (and percentage) of RSRZ outliers, followed by percent RSRZ outliers for the chain as percentile scores relative to all X-ray entries and entries of similar resolution. The OWAB column contains the minimum, median, 95<sup>th</sup> percentile and maximum values of the occupancy-weighted average B-factor per residue. The column labelled ‘Q < 0.9’ lists the number of (and percentage) of residues with an average occupancy less than 0.9.

Mol	Chain	Analysed	<RSRZ>	#RSRZ>2	OWAB(Å <sup>2</sup> )	Q<0.9
1	A	264/343 (76%)	-0.76	3 (1%) 80 75	18, 33, 61, 89	0
1	B	334/343 (97%)	-0.43	16 (4%) 30 21	21, 41, 93, 103	0
1	C	265/343 (77%)	-0.68	4 (1%) 73 68	22, 35, 61, 92	0
1	D	333/343 (97%)	-0.39	17 (5%) 28 19	20, 44, 93, 105	0
1	E	269/343 (78%)	-0.67	3 (1%) 80 75	21, 41, 64, 98	0
1	F	332/343 (96%)	-0.35	23 (6%) 16 10	18, 38, 112, 133	0
1	G	263/343 (76%)	-0.69	0 100 100	21, 39, 57, 95	0
1	H	333/343 (97%)	-0.28	23 (6%) 16 10	19, 39, 116, 140	0
All	All	2393/2744 (87%)	-0.51	89 (3%) 41 31	18, 38, 94, 140	0

The worst 5 of 89 RSRZ outliers are listed below:

Mol	Chain	Res	Type	RSRZ
1	H	264	GLY	8.4
1	H	265	ALA	8.2
1	F	266	MET	7.4
1	F	263	ALA	5.6
1	H	266	MET	5.5

### 6.2 Non-standard residues in protein, DNA, RNA chains [i](#)

There are no non-standard protein/DNA/RNA residues in this entry.

### 6.3 Carbohydrates [i](#)

There are no monosaccharides in this entry.

## 6.4 Ligands

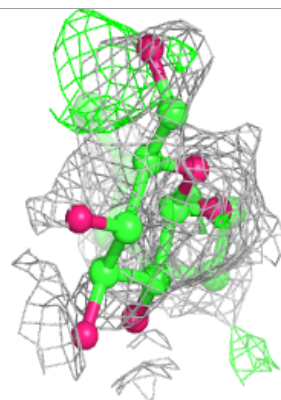
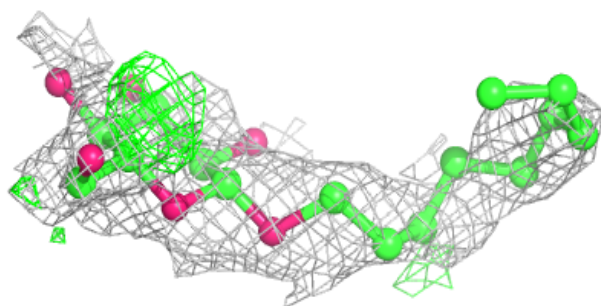
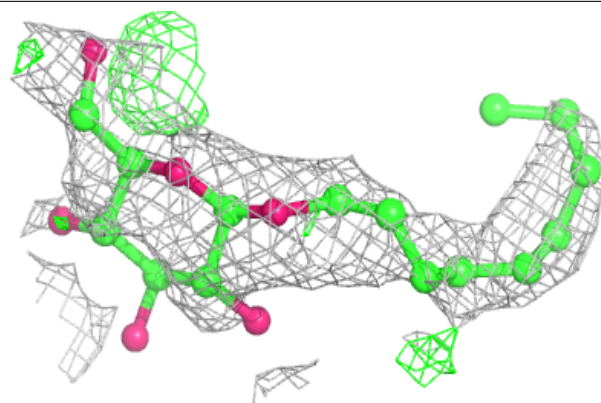
In the following table, the Atoms column lists the number of modelled atoms in the group and the number defined in the chemical component dictionary. The B-factors column lists the minimum, median, 95<sup>th</sup> percentile and maximum values of B factors of atoms in the group. The column labelled 'Q< 0.9' lists the number of atoms with occupancy less than 0.9.

Mol	Type	Chain	Res	Atoms	RSCC	RSR	B-factors(Å <sup>2</sup> )	Q<0.9
2	BNG	H	501	21/21	0.74	0.30	84,108,116,117	0
2	BNG	G	401	21/21	0.88	0.24	56,79,90,93	0
2	BNG	D	501	21/21	0.90	0.21	74,80,84,85	0
2	BNG	A	501	21/21	0.91	0.21	55,66,75,77	0
2	BNG	E	401	21/21	0.91	0.22	58,88,94,96	0
2	BNG	F	401	21/21	0.92	0.18	55,69,76,76	0
2	BNG	B	501	21/21	0.92	0.19	69,75,81,82	0
2	BNG	C	502	21/21	0.92	0.20	48,66,69,69	0
2	BNG	H	502	21/21	0.92	0.21	56,70,80,83	0
2	BNG	D	502	21/21	0.93	0.20	41,65,75,76	0
2	BNG	C	501	21/21	0.93	0.18	62,70,72,74	0
2	BNG	B	502	21/21	0.94	0.16	46,71,76,79	0
2	BNG	A	502	21/21	0.94	0.19	38,65,74,76	0

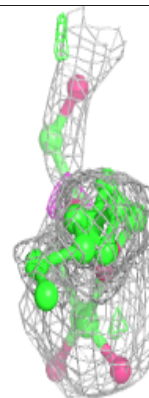
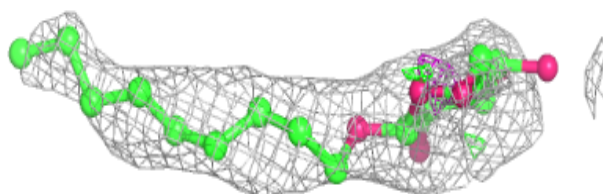
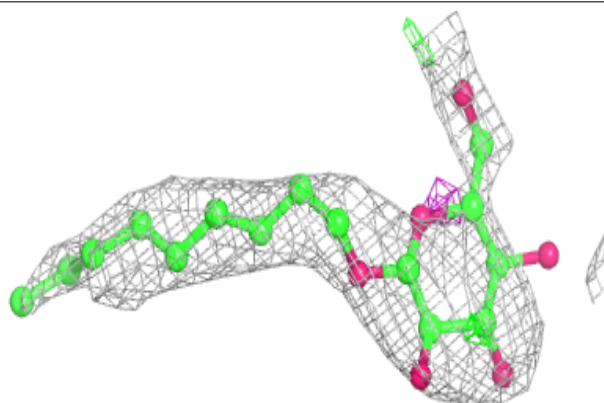
The following is a graphical depiction of the model fit to experimental electron density of all instances of the Ligand of Interest. In addition, ligands with molecular weight > 250 and outliers as shown on the geometry validation Tables will also be included. Each fit is shown from different orientation to approximate a three-dimensional view.

**Electron density around BNG H 501:**

$2mF_o-DF_c$  (at 0.7 rmsd) in gray  
 $mF_o-DF_c$  (at 3 rmsd) in purple (negative)  
and green (positive)

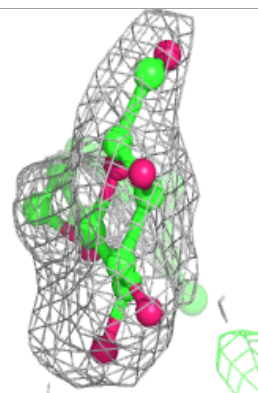
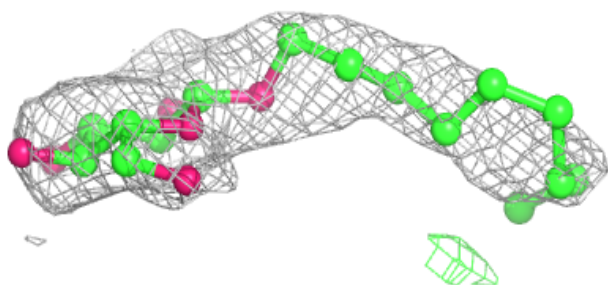
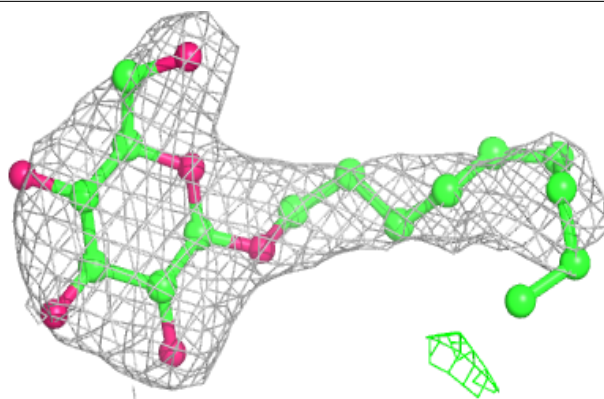
**Electron density around BNG G 401:**

$2mF_o-DF_c$  (at 0.7 rmsd) in gray  
 $mF_o-DF_c$  (at 3 rmsd) in purple (negative)  
and green (positive)

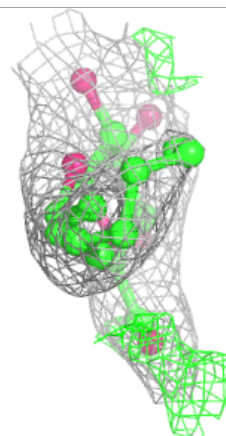
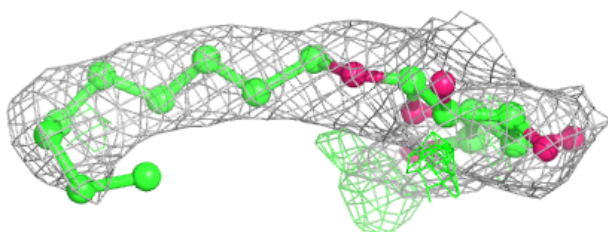
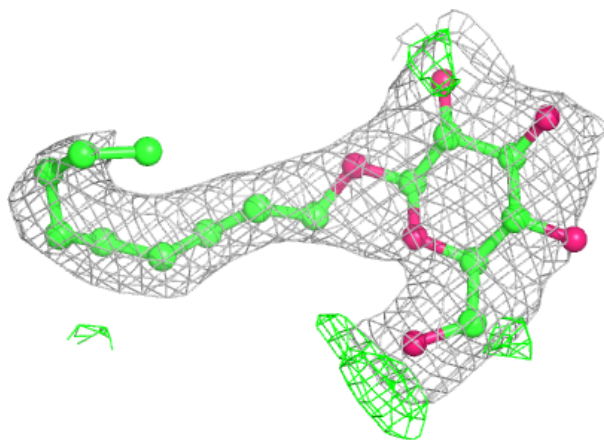


**Electron density around BNG D 501:**

$2mF_o-DF_c$  (at 0.7 rmsd) in gray  
 $mF_o-DF_c$  (at 3 rmsd) in purple (negative)  
and green (positive)

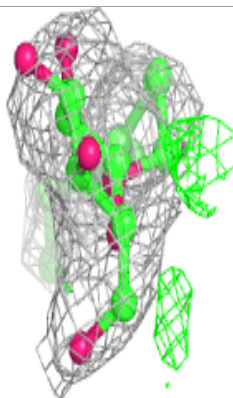
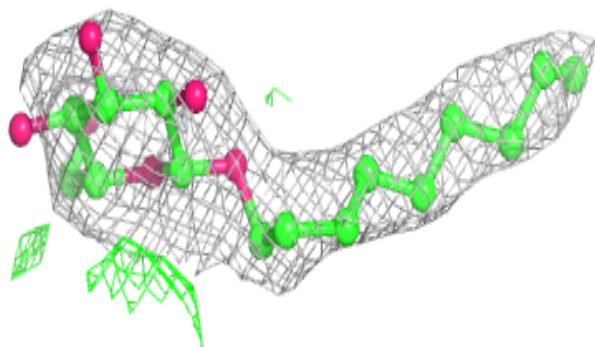
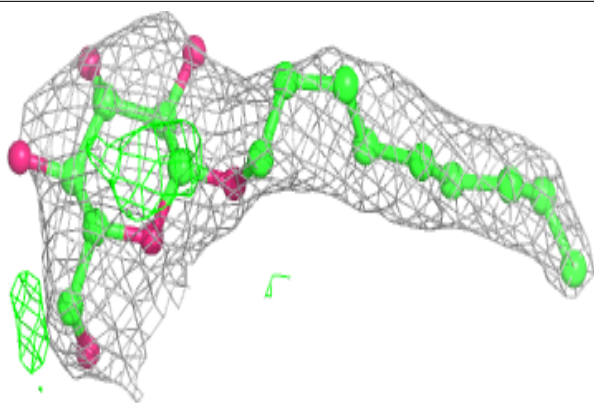
**Electron density around BNG A 501:**

$2mF_o-DF_c$  (at 0.7 rmsd) in gray  
 $mF_o-DF_c$  (at 3 rmsd) in purple (negative)  
and green (positive)

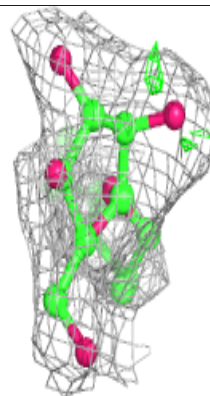
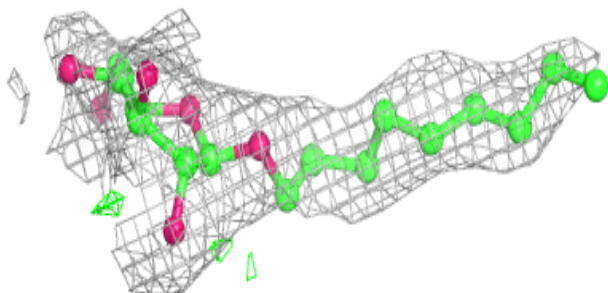
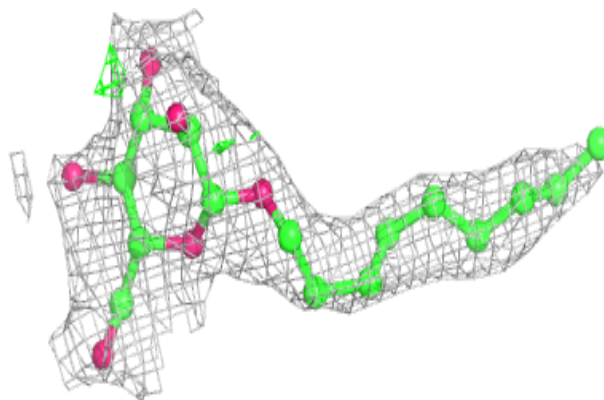


**Electron density around BNG E 401:**

$2mF_o-DF_c$  (at 0.7 rmsd) in gray  
 $mF_o-DF_c$  (at 3 rmsd) in purple (negative)  
and green (positive)

**Electron density around BNG F 401:**

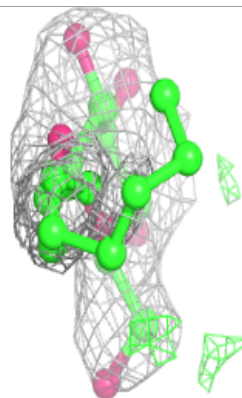
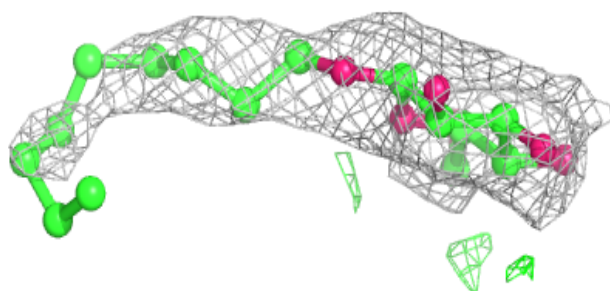
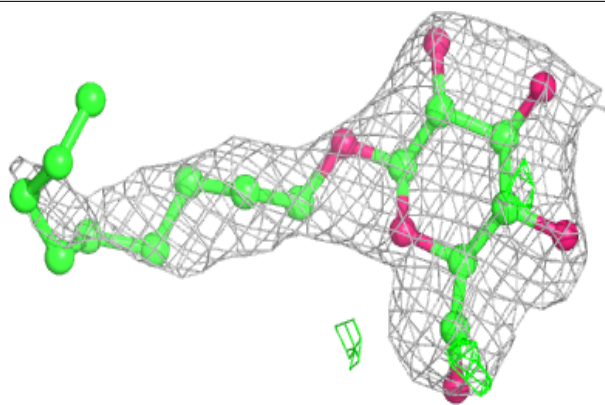
$2mF_o-DF_c$  (at 0.7 rmsd) in gray  
 $mF_o-DF_c$  (at 3 rmsd) in purple (negative)  
and green (positive)



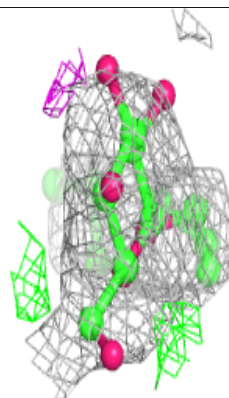
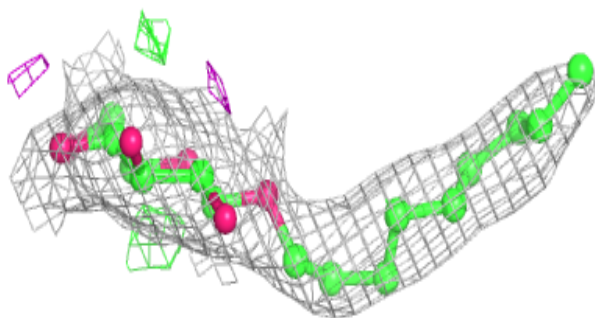
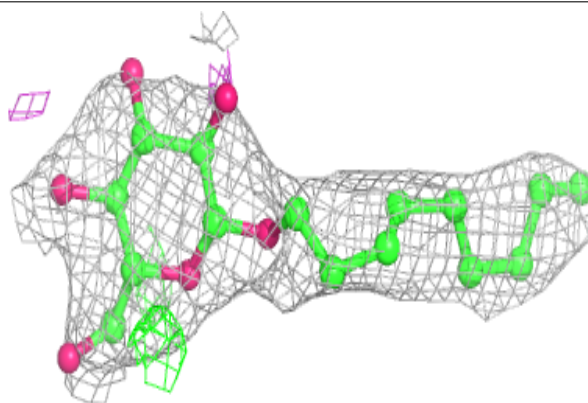


**Electron density around BNG B 501:**

$2mF_o-DF_c$  (at 0.7 rmsd) in gray  
 $mF_o-DF_c$  (at 3 rmsd) in purple (negative)  
and green (positive)

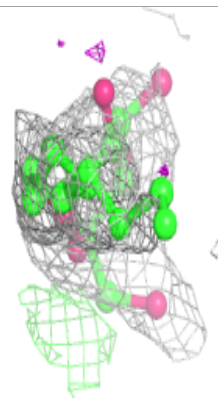
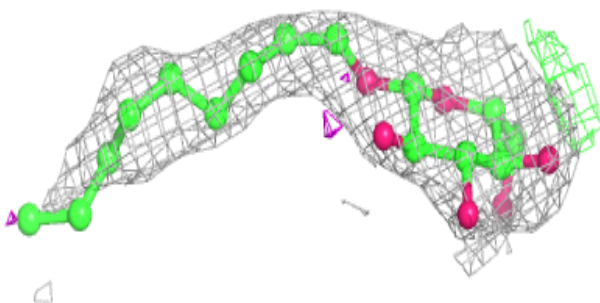
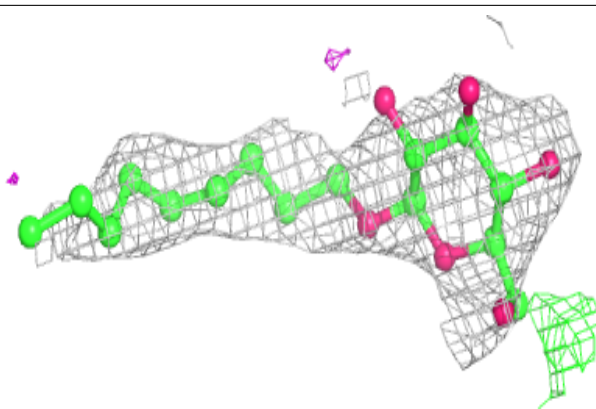
**Electron density around BNG C 502:**

$2mF_o-DF_c$  (at 0.7 rmsd) in gray  
 $mF_o-DF_c$  (at 3 rmsd) in purple (negative)  
and green (positive)

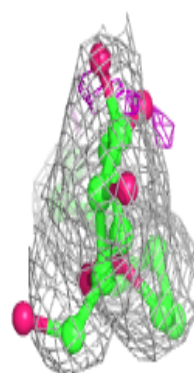
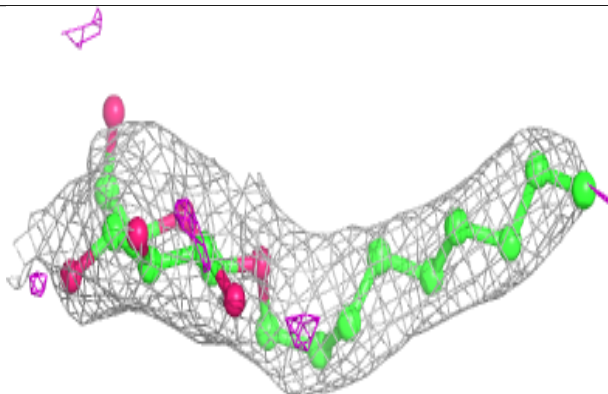
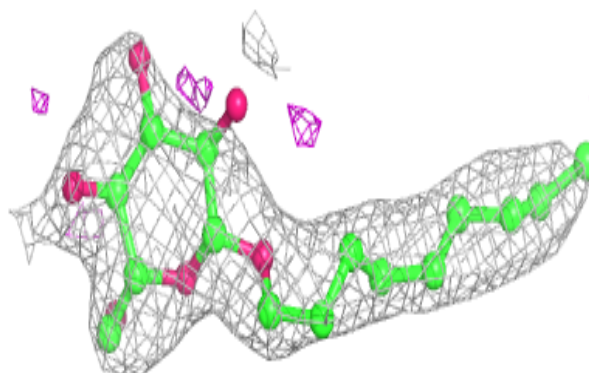


**Electron density around BNG H 502:**

$2mF_o-DF_c$  (at 0.7 rmsd) in gray  
 $mF_o-DF_c$  (at 3 rmsd) in purple (negative)  
and green (positive)

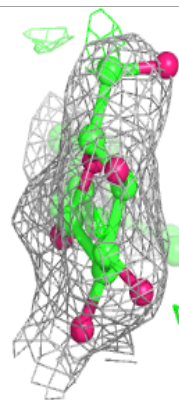
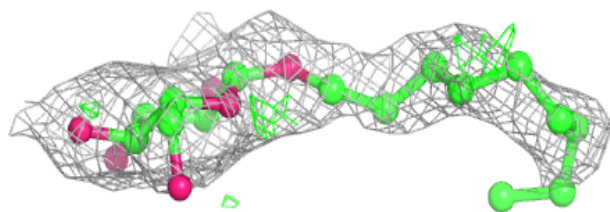
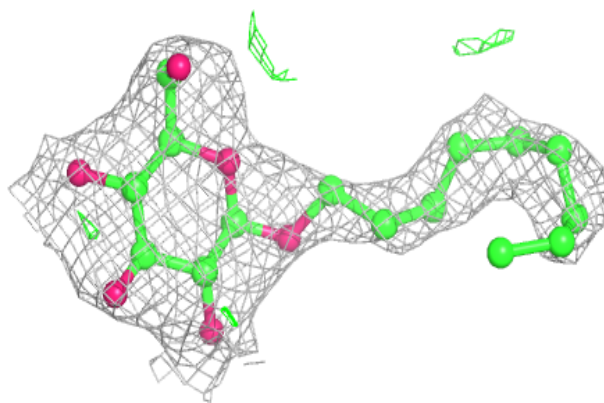
**Electron density around BNG D 502:**

$2mF_o-DF_c$  (at 0.7 rmsd) in gray  
 $mF_o-DF_c$  (at 3 rmsd) in purple (negative)  
and green (positive)

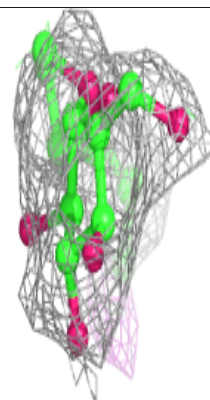
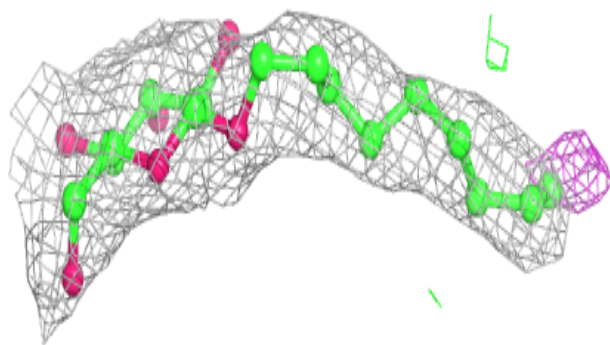
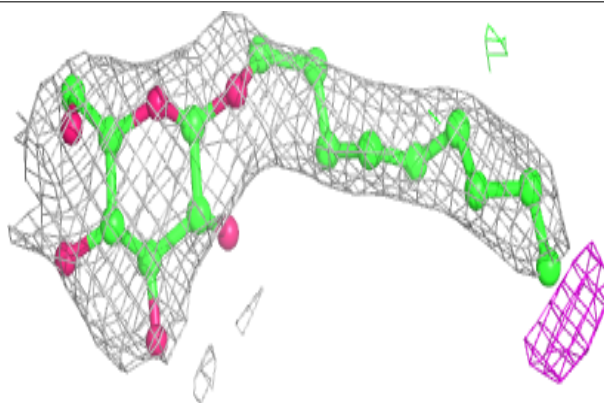


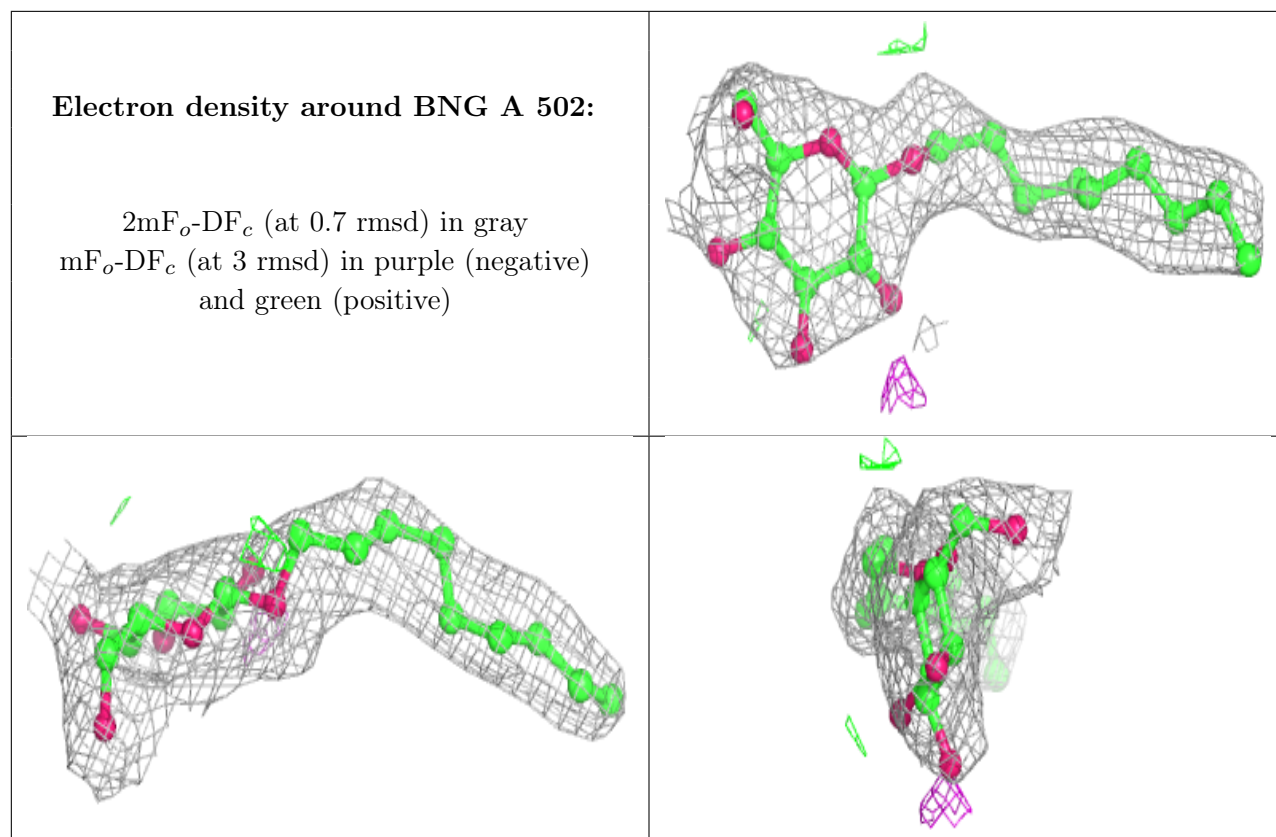
**Electron density around BNG C 501:**

$2mF_o-DF_c$  (at 0.7 rmsd) in gray  
 $mF_o-DF_c$  (at 3 rmsd) in purple (negative)  
and green (positive)

**Electron density around BNG B 502:**

$2mF_o-DF_c$  (at 0.7 rmsd) in gray  
 $mF_o-DF_c$  (at 3 rmsd) in purple (negative)  
and green (positive)





## 6.5 Other polymers [i](#)

There are no such residues in this entry.