



Full wwPDB X-ray Structure Validation Report ⓘ

Oct 30, 2023 – 01:19 PM JST

PDB ID : 5AZJ
Title : Crystal structure of glycerol kinase from *Trypanosoma brucei gambiense* complexed with 4NP (with disulfide bridge)
Authors : Balogun, E.O.; Inaoka, D.K.; Shiba, T.; Tokuoka, S.M.; Tokumasu, F.; Sakamoto, K.; Michels, P.A.M.; Harada, S.; Kita, K.
Deposited on : 2015-10-08
Resolution : 2.61 Å(reported)

This is a Full wwPDB X-ray Structure Validation Report for a publicly released PDB entry.

We welcome your comments at validation@mail.wwpdb.org

A user guide is available at

<https://www.wwpdb.org/validation/2017/XrayValidationReportHelp>

with specific help available everywhere you see the ⓘ symbol.

The types of validation reports are described at

<http://www.wwpdb.org/validation/2017/FAQs#types>.

The following versions of software and data (see [references ⓘ](#)) were used in the production of this report:

MolProbity : 4.02b-467
Mogul : 1.8.5 (274361), CSD as541be (2020)
Xtriage (Phenix) : 1.13
EDS : 2.36
Percentile statistics : 20191225.v01 (using entries in the PDB archive December 25th 2019)
Refmac : 5.8.0158
CCP4 : 7.0.044 (Gargrove)
Ideal geometry (proteins) : Engh & Huber (2001)
Ideal geometry (DNA, RNA) : Parkinson et al. (1996)
Validation Pipeline (wwPDB-VP) : 2.36

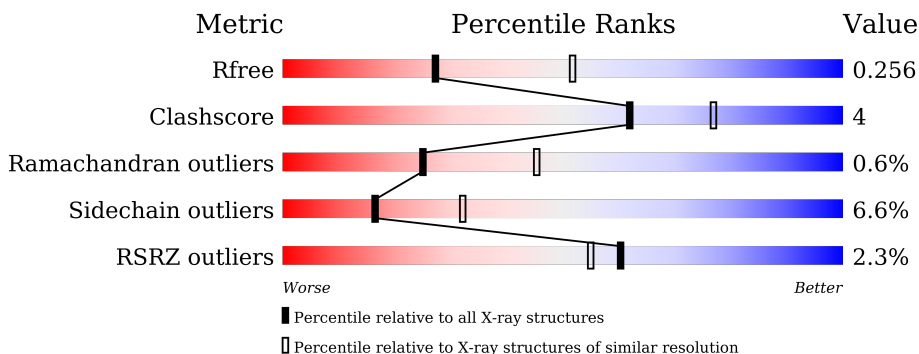
1 Overall quality at a glance

The following experimental techniques were used to determine the structure:

X-RAY DIFFRACTION

The reported resolution of this entry is 2.61 Å.

Percentile scores (ranging between 0-100) for global validation metrics of the entry are shown in the following graphic. The table shows the number of entries on which the scores are based.



Metric	Whole archive (#Entries)	Similar resolution (#Entries, resolution range(Å))
R_{free}	130704	3797 (2.64-2.60)
Clashscore	141614	4168 (2.64-2.60)
Ramachandran outliers	138981	4093 (2.64-2.60)
Sidechain outliers	138945	4093 (2.64-2.60)
RSRZ outliers	127900	3731 (2.64-2.60)

The table below summarises the geometric issues observed across the polymeric chains and their fit to the electron density. The red, orange, yellow and green segments of the lower bar indicate the fraction of residues that contain outliers for ≥ 3 , 2, 1 and 0 types of geometric quality criteria respectively. A grey segment represents the fraction of residues that are not modelled. The numeric value for each fraction is indicated below the corresponding segment, with a dot representing fractions $\leq 5\%$. The upper red bar (where present) indicates the fraction of residues that have poor fit to the electron density. The numeric value is given above the bar.

Mol	Chain	Length	Quality of chain
1	A	518	
1	C	518	
2	B	518	
2	D	518	

2 Entry composition [i](#)

There are 5 unique types of molecules in this entry. The entry contains 15966 atoms, of which 0 are hydrogens and 0 are deuteriums.

In the tables below, the ZeroOcc column contains the number of atoms modelled with zero occupancy, the AltConf column contains the number of residues with at least one atom in alternate conformation and the Trace column contains the number of residues modelled with at most 2 atoms.

- Molecule 1 is a protein called Glycerol kinase.

Mol	Chain	Residues	Atoms					ZeroOcc	AltConf	Trace
			Total	C	N	O	S			
1	A	513	3951	2493	694	731	33	0	0	0
1	C	513	3951	2493	694	731	33	0	0	0

There are 12 discrepancies between the modelled and reference sequences:

Chain	Residue	Modelled	Actual	Comment	Reference
A	-5	GLY	-	expression tag	UNP D3KVM3
A	-4	ILE	-	expression tag	UNP D3KVM3
A	-3	ASP	-	expression tag	UNP D3KVM3
A	-2	PRO	-	expression tag	UNP D3KVM3
A	-1	PHE	-	expression tag	UNP D3KVM3
A	0	THR	-	expression tag	UNP D3KVM3
C	-5	GLY	-	expression tag	UNP D3KVM3
C	-4	ILE	-	expression tag	UNP D3KVM3
C	-3	ASP	-	expression tag	UNP D3KVM3
C	-2	PRO	-	expression tag	UNP D3KVM3
C	-1	PHE	-	expression tag	UNP D3KVM3
C	0	THR	-	expression tag	UNP D3KVM3

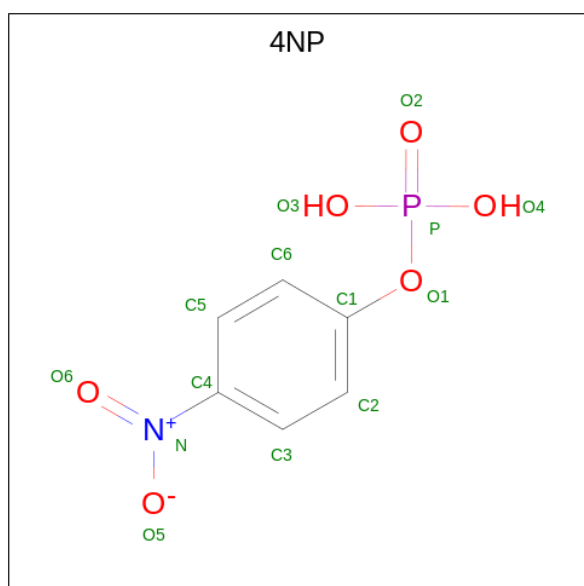
- Molecule 2 is a protein called Glycerol kinase.

Mol	Chain	Residues	Atoms					ZeroOcc	AltConf	Trace
			Total	C	N	O	P S			
2	B	513	3955	2493	694	734	1 33	0	0	0
2	D	513	3955	2493	694	734	1 33	0	0	0

There are 12 discrepancies between the modelled and reference sequences:

Chain	Residue	Modelled	Actual	Comment	Reference
B	-5	GLY	-	expression tag	UNP D3KVM3
B	-4	ILE	-	expression tag	UNP D3KVM3
B	-3	ASP	-	expression tag	UNP D3KVM3
B	-2	PRO	-	expression tag	UNP D3KVM3
B	-1	PHE	-	expression tag	UNP D3KVM3
B	0	THR	-	expression tag	UNP D3KVM3
D	-5	GLY	-	expression tag	UNP D3KVM3
D	-4	ILE	-	expression tag	UNP D3KVM3
D	-3	ASP	-	expression tag	UNP D3KVM3
D	-2	PRO	-	expression tag	UNP D3KVM3
D	-1	PHE	-	expression tag	UNP D3KVM3
D	0	THR	-	expression tag	UNP D3KVM3

- Molecule 3 is 4-NITROPHENYL PHOSPHATE (three-letter code: 4NP) (formula: $C_6H_5NO_6P$).



Mol	Chain	Residues	Atoms					ZeroOcc	AltConf
			Total	C	N	O	P		
3	A	1	14	6	1	6	1	0	0
3	C	1	14	6	1	6	1	0	0

- Molecule 4 is GLYCEROL (three-letter code: GOL) (formula: $C_3H_8O_3$).



Mol	Chain	Residues	Atoms	ZeroOcc	AltConf
4	A	1	Total C O 6 3 3	0	0
4	B	1	Total C O 6 3 3	0	0
4	C	1	Total C O 6 3 3	0	0
4	D	1	Total C O 6 3 3	0	0

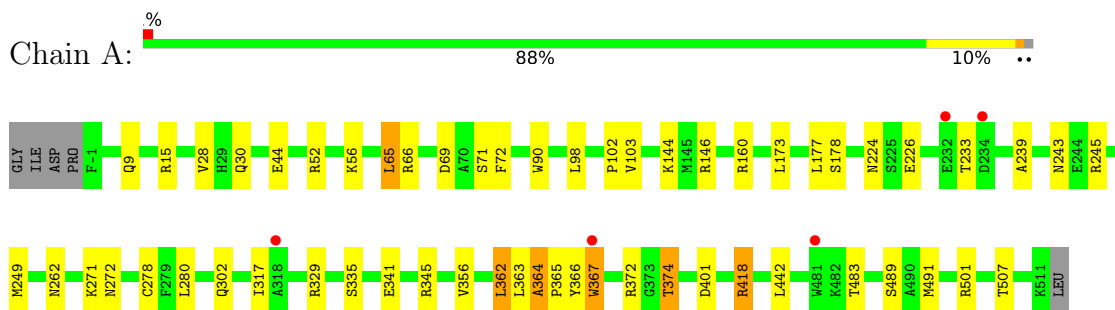
- Molecule 5 is water.

Mol	Chain	Residues	Atoms	ZeroOcc	AltConf
5	A	26	Total O 26 26	0	0
5	B	22	Total O 22 22	0	0
5	C	29	Total O 29 29	0	0
5	D	25	Total O 25 25	0	0

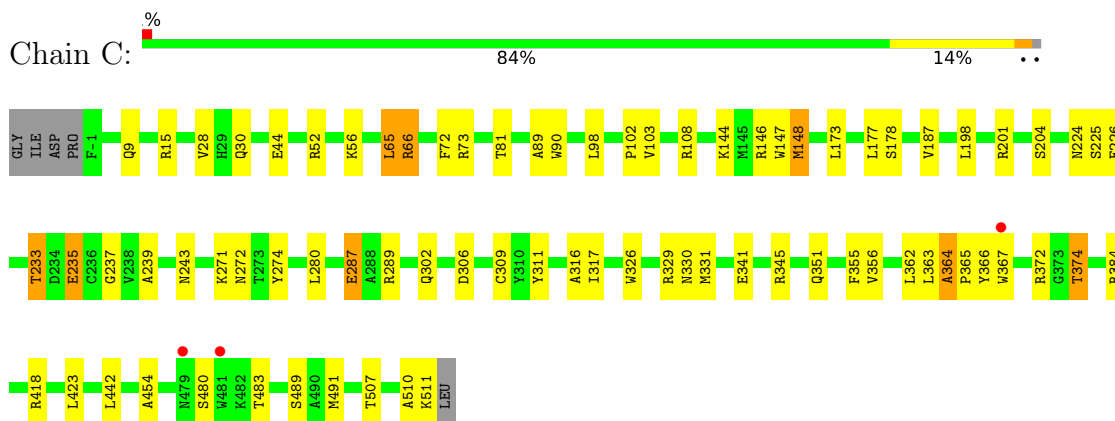
3 Residue-property plots [i](#)

These plots are drawn for all protein, RNA, DNA and oligosaccharide chains in the entry. The first graphic for a chain summarises the proportions of the various outlier classes displayed in the second graphic. The second graphic shows the sequence view annotated by issues in geometry and electron density. Residues are color-coded according to the number of geometric quality criteria for which they contain at least one outlier: green = 0, yellow = 1, orange = 2 and red = 3 or more. A red dot above a residue indicates a poor fit to the electron density ($RSRZ > 2$). Stretches of 2 or more consecutive residues without any outlier are shown as a green connector. Residues present in the sample, but not in the model, are shown in grey.

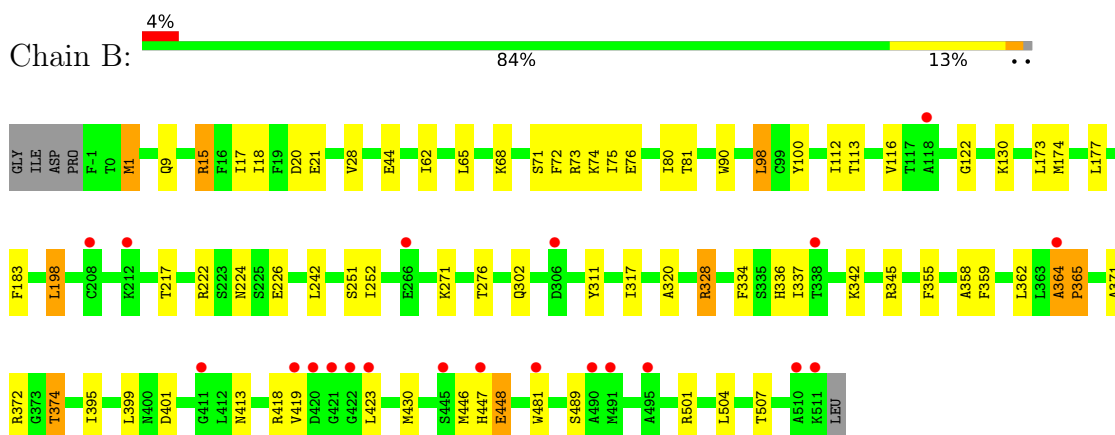
- Molecule 1: Glycerol kinase




- Molecule 1: Glycerol kinase

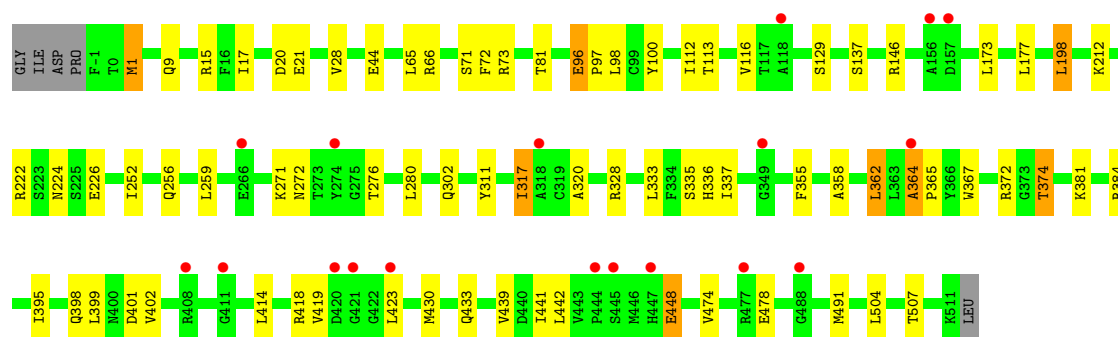


- Molecule 2: Glycerol kinase



- Molecule 2: Glycerol kinase

Chain D:  3% 84% 13% ..



4 Data and refinement statistics i

Property	Value	Source
Space group	P 1 21 1	Depositor
Cell constants a, b, c, α , β , γ	63.74Å 120.03Å 154.71Å 90.00° 90.02° 90.00°	Depositor
Resolution (Å)	20.00 – 2.61 19.86 – 2.61	Depositor EDS
% Data completeness (in resolution range)	95.6 (20.00-2.61) 95.7 (19.86-2.61)	Depositor EDS
R_{merge}	0.10	Depositor
R_{sym}	(Not available)	Depositor
$\langle I/\sigma(I) \rangle$ ¹	1.55 (at 2.59Å)	Xtrriage
Refinement program	REFMAC 5.7.0029	Depositor
R, R_{free}	0.196 , 0.257 0.201 , 0.256	Depositor DCC
R_{free} test set	3406 reflections (5.05%)	wwPDB-VP
Wilson B-factor (Å ²)	42.4	Xtrriage
Anisotropy	0.296	Xtrriage
Bulk solvent k_{sol} (e/Å ³), B_{sol} (Å ²)	0.38 , 28.0	EDS
L-test for twinning ²	$\langle L \rangle = 0.50$, $\langle L^2 \rangle = 0.34$	Xtrriage
Estimated twinning fraction	0.459 for h,-k,-l	Xtrriage
F_o, F_c correlation	0.93	EDS
Total number of atoms	15966	wwPDB-VP
Average B, all atoms (Å ²)	47.0	wwPDB-VP

Xtrriage's analysis on translational NCS is as follows: *The largest off-origin peak in the Patterson function is 3.38% of the height of the origin peak. No significant pseudotranslation is detected.*

¹Intensities estimated from amplitudes.

²Theoretical values of $\langle |L| \rangle$, $\langle L^2 \rangle$ for acentric reflections are 0.5, 0.333 respectively for untwinned datasets, and 0.375, 0.2 for perfectly twinned datasets.

5 Model quality

5.1 Standard geometry

Bond lengths and bond angles in the following residue types are not validated in this section: 4NP, GOL, TPO

The Z score for a bond length (or angle) is the number of standard deviations the observed value is removed from the expected value. A bond length (or angle) with $|Z| > 5$ is considered an outlier worth inspection. RMSZ is the root-mean-square of all Z scores of the bond lengths (or angles).

Mol	Chain	Bond lengths		Bond angles	
		RMSZ	# Z >5	RMSZ	# Z >5
1	A	0.49	0/4032	0.68	0/5456
1	C	0.49	0/4032	0.68	0/5456
2	B	0.46	0/4024	0.66	0/5443
2	D	0.45	0/4024	0.66	0/5443
All	All	0.47	0/16112	0.67	0/21798

Chiral center outliers are detected by calculating the chiral volume of a chiral center and verifying if the center is modelled as a planar moiety or with the opposite hand. A planarity outlier is detected by checking planarity of atoms in a peptide group, atoms in a mainchain group or atoms of a sidechain that are expected to be planar.

Mol	Chain	#Chirality outliers	#Planarity outliers
1	C	0	1
2	B	0	1
All	All	0	2

There are no bond length outliers.

There are no bond angle outliers.

There are no chirality outliers.

All (2) planarity outliers are listed below:

Mol	Chain	Res	Type	Group
2	B	15	ARG	Sidechain
1	C	316	ALA	Peptide

5.2 Too-close contacts [i](#)

In the following table, the Non-H and H(model) columns list the number of non-hydrogen atoms and hydrogen atoms in the chain respectively. The H(added) column lists the number of hydrogen atoms added and optimized by MolProbity. The Clashes column lists the number of clashes within the asymmetric unit, whereas Symm-Clashes lists symmetry-related clashes.

Mol	Chain	Non-H	H(model)	H(added)	Clashes	Symm-Clashes
1	A	3951	0	3963	26	0
1	C	3951	0	3963	35	0
2	B	3955	0	3960	39	0
2	D	3955	0	3960	40	0
3	A	14	0	4	1	0
3	C	14	0	4	0	0
4	A	6	0	8	0	0
4	B	6	0	8	0	0
4	C	6	0	8	0	0
4	D	6	0	8	0	0
5	A	26	0	0	0	0
5	B	22	0	0	1	0
5	C	29	0	0	0	0
5	D	25	0	0	0	0
All	All	15966	0	15886	141	0

The all-atom clashscore is defined as the number of clashes found per 1000 atoms (including hydrogen atoms). The all-atom clashscore for this structure is 4.

All (141) close contacts within the same asymmetric unit are listed below, sorted by their clash magnitude.

Atom-1	Atom-2	Interatomic distance (Å)	Clash overlap (Å)
2:B:15:ARG:NH2	2:B:17:ILE:HD11	1.92	0.85
2:B:364:ALA:HB1	2:B:365:PRO:HD3	1.57	0.84
2:B:15:ARG:HH21	2:B:17:ILE:HD11	1.46	0.79
2:B:364:ALA:HB1	2:B:365:PRO:CD	2.16	0.75
2:D:364:ALA:HB1	2:D:365:PRO:CD	2.18	0.73
2:D:372:ARG:O	2:D:374:THR:HG22	1.91	0.70
2:D:374:THR:HG23	2:D:507:THR:HG22	1.74	0.69
1:A:364:ALA:HB1	1:A:365:PRO:CD	2.22	0.69
1:C:224:ASN:HD22	1:C:302:GLN:H	1.41	0.68
2:B:446:MET:SD	2:B:448:GLU:HB3	2.33	0.68
1:C:233:THR:O	1:C:239:ALA:HB2	1.93	0.68
2:D:1:MET:HE1	2:D:21:GLU:HG2	1.74	0.68
1:C:351:GLN:O	1:C:351:GLN:HG2	1.93	0.67

Continued on next page...

Continued from previous page...

Atom-1	Atom-2	Interatomic distance (Å)	Clash overlap (Å)
1:A:224:ASN:HD22	1:A:302:GLN:H	1.44	0.65
2:B:17:ILE:HD13	2:B:28:VAL:HG23	1.76	0.65
1:C:364:ALA:HB1	1:C:365:PRO:CD	2.26	0.65
1:C:341:GLU:OE2	1:C:345:ARG:NH2	2.31	0.63
2:B:44:GLU:HG2	2:B:100:TYR:HB3	1.80	0.63
2:B:358:ALA:HB2	2:B:362:LEU:HD13	1.80	0.62
2:D:224:ASN:HD22	2:D:302:GLN:H	1.46	0.62
1:A:341:GLU:OE2	1:A:345:ARG:NH2	2.33	0.62
2:D:374:THR:HG21	2:D:507:THR:HA	1.84	0.60
2:B:419:VAL:HG21	2:B:430:MET:SD	2.41	0.60
2:D:419:VAL:HG21	2:D:430:MET:SD	2.41	0.59
2:D:15:ARG:HH21	2:D:448:GLU:CD	2.04	0.59
2:B:372:ARG:O	2:B:374:THR:HG22	2.03	0.59
2:D:320:ALA:HB1	2:D:423:LEU:HD13	1.84	0.59
1:A:262:ASN:O	1:A:418:ARG:NH1	2.37	0.57
2:D:320:ALA:HA	2:D:395:ILE:HD13	1.86	0.57
2:D:364:ALA:HB1	2:D:365:PRO:HD3	1.87	0.57
1:A:374:THR:HG21	1:A:507:THR:HA	1.86	0.56
2:B:15:ARG:NH2	2:B:448:GLU:OE1	2.38	0.56
1:C:374:THR:CG2	1:C:507:THR:HG22	2.34	0.56
2:B:374:THR:HG21	2:B:507:THR:HA	1.88	0.56
1:C:372:ARG:O	1:C:374:THR:HG22	2.06	0.56
2:D:374:THR:CG2	2:D:507:THR:HG22	2.34	0.56
2:B:224:ASN:HD22	2:B:302:GLN:H	1.53	0.56
2:D:17:ILE:HD13	2:D:28:VAL:HG23	1.88	0.55
2:D:364:ALA:CB	2:D:365:PRO:CD	2.84	0.55
1:C:89:ALA:HB2	1:C:148:MET:HE2	1.89	0.55
2:B:364:ALA:CB	2:B:365:PRO:CD	2.85	0.54
2:B:320:ALA:HB1	2:B:423:LEU:HD13	1.89	0.54
1:C:201:ARG:HD3	1:C:309:CYS:SG	2.48	0.54
1:C:364:ALA:HB1	1:C:365:PRO:HD3	1.89	0.53
2:D:320:ALA:CB	2:D:423:LEU:HD13	2.38	0.53
1:A:374:THR:CG2	1:A:507:THR:HG22	2.37	0.53
2:D:414:LEU:HD22	2:D:439:VAL:HG21	1.91	0.53
1:C:198:LEU:HD22	1:C:311:TYR:CE1	2.44	0.53
1:A:102:PRO:HB2	1:A:144:LYS:HD3	1.92	0.52
2:B:401:ASP:OD1	2:B:501:ARG:NH1	2.42	0.52
2:D:272:ASN:HD21	2:D:317:ILE:HD11	1.75	0.52
2:D:1:MET:SD	2:D:20:ASP:HB2	2.50	0.52
2:D:333:LEU:O	2:D:384:ARG:HD2	2.10	0.52
2:B:18:ILE:HD13	2:B:75:ILE:HD11	1.92	0.52

Continued on next page...

Continued from previous page...

Atom-1	Atom-2	Interatomic distance (Å)	Clash overlap (Å)
1:C:15:ARG:HG2	1:C:30:GLN:HE21	1.75	0.51
2:D:96:GLU:HG3	2:D:97:PRO:HD2	1.92	0.51
1:A:356:VAL:HG11	1:A:507:THR:HG21	1.93	0.51
2:B:1:MET:SD	2:B:20:ASP:HB2	2.51	0.51
1:C:235:GLU:O	1:C:237:GLY:N	2.42	0.51
2:D:358:ALA:HB2	2:D:362:LEU:HD13	1.92	0.51
1:A:65:LEU:HD22	1:A:69:ASP:HB3	1.93	0.51
1:A:364:ALA:HB1	1:A:365:PRO:HD3	1.91	0.51
1:A:372:ARG:O	1:A:374:THR:HG22	2.11	0.50
2:B:1:MET:HE1	2:B:21:GLU:CG	2.40	0.50
1:C:374:THR:HG21	1:C:507:THR:HA	1.93	0.50
2:D:1:MET:HE1	2:D:21:GLU:CG	2.40	0.50
2:B:1:MET:HE3	2:B:1:MET:HA	1.94	0.50
1:A:90:TRP:HA	1:A:98:LEU:HD22	1.93	0.50
1:A:233:THR:O	1:A:239:ALA:HB2	2.11	0.50
1:A:65:LEU:HD13	1:A:72:PHE:CG	2.47	0.49
1:A:272:ASN:HB2	1:A:280:LEU:HD12	1.93	0.49
1:A:226:GLU:O	1:A:249:MET:HA	2.13	0.49
2:B:374:THR:HG23	2:B:507:THR:HG22	1.94	0.49
1:A:374:THR:HG23	1:A:507:THR:HG22	1.95	0.49
2:B:62:ILE:HD11	2:B:242:LEU:HD23	1.95	0.49
2:D:317:ILE:HG22	2:D:398:GLN:HB3	1.95	0.48
1:A:52:ARG:O	1:A:56:LYS:HG3	2.13	0.48
1:C:65:LEU:HD13	1:C:72:PHE:CG	2.48	0.48
2:B:80:ILE:O	2:B:251:SER:HA	2.13	0.48
2:D:15:ARG:NH2	2:D:448:GLU:OE1	2.40	0.48
1:C:356:VAL:HG11	1:C:507:THR:HG21	1.95	0.48
1:A:364:ALA:O	1:A:367:TRP:CE3	2.67	0.47
1:C:364:ALA:O	1:C:367:TRP:CE3	2.67	0.47
2:D:317:ILE:CG2	2:D:398:GLN:HB3	2.45	0.47
1:C:90:TRP:HA	1:C:98:LEU:HD22	1.95	0.47
1:C:364:ALA:O	1:C:367:TRP:CZ3	2.68	0.47
1:A:364:ALA:CB	1:A:365:PRO:CD	2.91	0.47
2:B:320:ALA:HA	2:B:395:ILE:HD13	1.96	0.47
1:C:89:ALA:HB2	1:C:148:MET:CE	2.44	0.47
2:D:198:LEU:HD22	2:D:311:TYR:HE1	1.80	0.47
1:A:44:GLU:HA	1:A:103:VAL:HG23	1.97	0.47
2:B:183:PHE:HZ	2:B:217:THR:O	1.99	0.46
1:C:510:ALA:O	1:C:511:LYS:HB2	2.16	0.46
2:B:1:MET:HA	2:B:1:MET:CE	2.45	0.46
1:A:364:ALA:O	1:A:367:TRP:CZ3	2.69	0.46

Continued on next page...

Continued from previous page...

Atom-1	Atom-2	Interatomic distance (Å)	Clash overlap (Å)
2:B:222:ARG:HD3	2:B:226:GLU:OE1	2.16	0.45
1:C:198:LEU:HD22	1:C:311:TYR:HE1	1.80	0.45
2:B:374:THR:CG2	2:B:507:THR:HG22	2.46	0.45
2:B:71:SER:O	2:B:72:PHE:C	2.54	0.45
2:B:328:ARG:HB2	2:B:334:PHE:CE2	2.51	0.45
2:B:362:LEU:HD21	2:B:504:LEU:HD22	1.99	0.45
1:C:364:ALA:CB	1:C:365:PRO:CD	2.95	0.44
1:C:102:PRO:HB2	1:C:144:LYS:HD3	1.99	0.44
1:C:272:ASN:HB2	1:C:280:LEU:HD12	1.99	0.44
2:B:198:LEU:HD22	2:B:311:TYR:HE1	1.82	0.44
3:A:601:4NP:O4	3:A:601:4NP:H21	2.18	0.44
1:A:401:ASP:OD1	1:A:501:ARG:NH2	2.48	0.44
2:D:112:ILE:O	2:D:116:VAL:HG23	2.18	0.43
2:D:280:LEU:HD23	2:D:402:VAL:HG12	2.00	0.43
1:C:274:TYR:HB3	1:C:423:LEU:HB2	2.00	0.43
1:C:329:ARG:HG2	1:C:330:ASN:OD1	2.17	0.43
2:D:1:MET:HA	2:D:1:MET:HE3	1.99	0.43
2:D:81:THR:HA	2:D:252:ILE:O	2.18	0.43
2:B:371:ALA:HA	2:B:507:THR:O	2.18	0.43
1:C:287:GLU:OE2	1:C:289:ARG:NH2	2.52	0.43
2:D:362:LEU:HD21	2:D:504:LEU:HD22	2.00	0.43
2:B:112:ILE:O	2:B:116:VAL:HG23	2.19	0.43
1:C:326:TRP:CH2	1:C:331:MET:HG3	2.54	0.43
1:A:362:LEU:O	1:A:367:TRP:HA	2.19	0.42
2:B:359:PHE:N	5:B:701:HOH:O	2.53	0.42
1:A:15:ARG:HG2	1:A:30:GLN:HE21	1.84	0.42
1:C:66:ARG:NH2	1:C:73:ARG:O	2.52	0.42
2:D:222:ARG:HD3	2:D:226:GLU:OE1	2.18	0.42
2:B:358:ALA:HB2	2:B:362:LEU:CD1	2.48	0.42
2:D:364:ALA:O	2:D:367:TRP:NE1	2.53	0.41
2:B:81:THR:HA	2:B:252:ILE:O	2.20	0.41
1:C:225:SER:O	1:C:226:GLU:HB3	2.19	0.41
2:D:44:GLU:HG2	2:D:100:TYR:HB3	2.02	0.41
2:D:364:ALA:HB1	2:D:365:PRO:HD2	2.01	0.41
1:C:52:ARG:O	1:C:56:LYS:HG3	2.20	0.41
2:B:358:ALA:CB	2:B:362:LEU:HD13	2.50	0.41
1:C:108:ARG:HD3	1:C:147:TRP:CZ2	2.55	0.41
2:D:17:ILE:CD1	2:D:28:VAL:HG23	2.51	0.41
2:D:433:GLN:HB3	2:D:441:ILE:HD11	2.01	0.41
2:D:474:VAL:O	2:D:478:GLU:N	2.54	0.41
1:A:272:ASN:HD21	1:A:278:CYS:HB3	1.86	0.41

Continued on next page...

Continued from previous page...

Atom-1	Atom-2	Interatomic distance (Å)	Clash overlap (Å)
2:D:256:GLN:O	2:D:259:LEU:HB3	2.21	0.41
1:C:44:GLU:HA	1:C:103:VAL:HG23	2.03	0.41
2:D:71:SER:O	2:D:72:PHE:C	2.58	0.41
1:C:81:THR:HB	1:C:454:ALA:HB2	2.01	0.40
2:B:90:TRP:HA	2:B:98:LEU:HD22	2.04	0.40

There are no symmetry-related clashes.

5.3 Torsion angles [i](#)

5.3.1 Protein backbone [i](#)

In the following table, the Percentiles column shows the percent Ramachandran outliers of the chain as a percentile score with respect to all X-ray entries followed by that with respect to entries of similar resolution.

The Analysed column shows the number of residues for which the backbone conformation was analysed, and the total number of residues.

Mol	Chain	Analysed	Favoured	Allowed	Outliers	Percentiles
1	A	511/518 (99%)	485 (95%)	24 (5%)	2 (0%)	34 55
1	C	511/518 (99%)	483 (94%)	24 (5%)	4 (1%)	19 36
2	B	510/518 (98%)	486 (95%)	20 (4%)	4 (1%)	19 36
2	D	510/518 (98%)	485 (95%)	23 (4%)	2 (0%)	34 55
All	All	2042/2072 (99%)	1939 (95%)	91 (4%)	12 (1%)	25 45

All (12) Ramachandran outliers are listed below:

Mol	Chain	Res	Type
2	B	448	GLU
1	C	235	GLU
2	D	364	ALA
1	A	364	ALA
2	B	364	ALA
1	C	306	ASP
1	C	363	LEU
1	C	364	ALA
1	A	363	LEU
2	D	448	GLU

Continued on next page...

Continued from previous page...

Mol	Chain	Res	Type
2	B	489	SER
2	B	122	GLY

5.3.2 Protein sidechains [i](#)

In the following table, the Percentiles column shows the percent sidechain outliers of the chain as a percentile score with respect to all X-ray entries followed by that with respect to entries of similar resolution.

The Analysed column shows the number of residues for which the sidechain conformation was analysed, and the total number of residues.

Mol	Chain	Analysed	Rotameric	Outliers	Percentiles	
1	A	420/425 (99%)	395 (94%)	25 (6%)	19	37
1	C	420/425 (99%)	393 (94%)	27 (6%)	17	34
2	B	419/424 (99%)	390 (93%)	29 (7%)	15	30
2	D	419/424 (99%)	389 (93%)	30 (7%)	14	27
All	All	1678/1698 (99%)	1567 (93%)	111 (7%)	16	32

All (111) residues with a non-rotameric sidechain are listed below:

Mol	Chain	Res	Type
1	A	9	GLN
1	A	28	VAL
1	A	65	LEU
1	A	66	ARG
1	A	71	SER
1	A	146	ARG
1	A	160	ARG
1	A	173	LEU
1	A	177	LEU
1	A	178	SER
1	A	243	ASN
1	A	245	ARG
1	A	271	LYS
1	A	317	ILE
1	A	329	ARG
1	A	335	SER
1	A	362	LEU
1	A	366	TYR
1	A	367	TRP

Continued on next page...

Continued from previous page...

Mol	Chain	Res	Type
1	A	374	THR
1	A	418	ARG
1	A	442	LEU
1	A	483	THR
1	A	489	SER
1	A	491	MET
2	B	1	MET
2	B	9	GLN
2	B	65	LEU
2	B	68	LYS
2	B	73	ARG
2	B	74	LYS
2	B	76	GLU
2	B	98	LEU
2	B	113	THR
2	B	130	LYS
2	B	173	LEU
2	B	174	MET
2	B	177	LEU
2	B	198	LEU
2	B	271	LYS
2	B	317	ILE
2	B	328	ARG
2	B	336	HIS
2	B	337	ILE
2	B	342	LYS
2	B	345	ARG
2	B	355	PHE
2	B	365	PRO
2	B	374	THR
2	B	399	LEU
2	B	413	ASN
2	B	418	ARG
2	B	447	HIS
2	B	481	TRP
1	C	9	GLN
1	C	28	VAL
1	C	65	LEU
1	C	66	ARG
1	C	146	ARG
1	C	148	MET
1	C	173	LEU

Continued on next page...

Continued from previous page...

Mol	Chain	Res	Type
1	C	177	LEU
1	C	178	SER
1	C	187	VAL
1	C	204	SER
1	C	233	THR
1	C	243	ASN
1	C	271	LYS
1	C	287	GLU
1	C	317	ILE
1	C	355	PHE
1	C	362	LEU
1	C	366	TYR
1	C	374	THR
1	C	384	ARG
1	C	418	ARG
1	C	442	LEU
1	C	480	SER
1	C	483	THR
1	C	489	SER
1	C	491	MET
2	D	1	MET
2	D	9	GLN
2	D	65	LEU
2	D	66	ARG
2	D	73	ARG
2	D	96	GLU
2	D	98	LEU
2	D	113	THR
2	D	129	SER
2	D	137	SER
2	D	146	ARG
2	D	173	LEU
2	D	177	LEU
2	D	198	LEU
2	D	212	LYS
2	D	271	LYS
2	D	317	ILE
2	D	328	ARG
2	D	335	SER
2	D	336	HIS
2	D	337	ILE
2	D	355	PHE

Continued on next page...

Continued from previous page...

Mol	Chain	Res	Type
2	D	362	LEU
2	D	374	THR
2	D	381	LYS
2	D	399	LEU
2	D	401	ASP
2	D	418	ARG
2	D	442	LEU
2	D	491	MET

Sometimes sidechains can be flipped to improve hydrogen bonding and reduce clashes. All (24) such sidechains are listed below:

Mol	Chain	Res	Type
1	A	23	GLN
1	A	30	GLN
1	A	224	ASN
1	A	243	ASN
1	A	272	ASN
1	A	302	GLN
1	A	336	HIS
2	B	23	GLN
2	B	224	ASN
2	B	272	ASN
2	B	302	GLN
1	C	23	GLN
1	C	30	GLN
1	C	224	ASN
1	C	243	ASN
1	C	272	ASN
1	C	293	HIS
1	C	302	GLN
2	D	23	GLN
2	D	30	GLN
2	D	224	ASN
2	D	272	ASN
2	D	302	GLN
2	D	433	GLN

5.3.3 RNA [i](#)

There are no RNA molecules in this entry.

5.4 Non-standard residues in protein, DNA, RNA chains

2 non-standard protein/DNA/RNA residues are modelled in this entry.

In the following table, the Counts columns list the number of bonds (or angles) for which Mogul statistics could be retrieved, the number of bonds (or angles) that are observed in the model and the number of bonds (or angles) that are defined in the Chemical Component Dictionary. The Link column lists molecule types, if any, to which the group is linked. The Z score for a bond length (or angle) is the number of standard deviations the observed value is removed from the expected value. A bond length (or angle) with $|Z| > 2$ is considered an outlier worth inspection. RMSZ is the root-mean-square of all Z scores of the bond lengths (or angles).

Mol	Type	Chain	Res	Link	Bond lengths			Bond angles		
					Counts	RMSZ	# Z > 2	Counts	RMSZ	# Z > 2
2	TPO	D	276	2	8,10,11	1.80	1 (12%)	10,14,16	2.03	2 (20%)
2	TPO	B	276	2	8,10,11	1.85	1 (12%)	10,14,16	2.04	2 (20%)

In the following table, the Chirals column lists the number of chiral outliers, the number of chiral centers analysed, the number of these observed in the model and the number defined in the Chemical Component Dictionary. Similar counts are reported in the Torsion and Rings columns. '-' means no outliers of that kind were identified.

Mol	Type	Chain	Res	Link	Chirals	Torsions	Rings
2	TPO	D	276	2	-	1/9/11/13	-
2	TPO	B	276	2	-	3/9/11/13	-

All (2) bond length outliers are listed below:

Mol	Chain	Res	Type	Atoms	Z	Observed(Å)	Ideal(Å)
2	D	276	TPO	P-OG1	4.83	1.68	1.59
2	B	276	TPO	P-OG1	4.82	1.68	1.59

All (4) bond angle outliers are listed below:

Mol	Chain	Res	Type	Atoms	Z	Observed(°)	Ideal(°)
2	B	276	TPO	CG2-CB-CA	-4.86	103.57	113.16
2	D	276	TPO	CG2-CB-CA	-4.67	103.95	113.16
2	B	276	TPO	P-OG1-CB	3.32	133.23	123.21
2	D	276	TPO	P-OG1-CB	3.29	133.13	123.21

There are no chirality outliers.

All (4) torsion outliers are listed below:

Mol	Chain	Res	Type	Atoms
2	B	276	TPO	O-C-CA-CB
2	B	276	TPO	CB-OG1-P-O1P
2	D	276	TPO	O-C-CA-CB
2	B	276	TPO	CA-CB-OG1-P

There are no ring outliers.

No monomer is involved in short contacts.

5.5 Carbohydrates [i](#)

There are no monosaccharides in this entry.

5.6 Ligand geometry [i](#)

6 ligands are modelled in this entry.

In the following table, the Counts columns list the number of bonds (or angles) for which Mogul statistics could be retrieved, the number of bonds (or angles) that are observed in the model and the number of bonds (or angles) that are defined in the Chemical Component Dictionary. The Link column lists molecule types, if any, to which the group is linked. The Z score for a bond length (or angle) is the number of standard deviations the observed value is removed from the expected value. A bond length (or angle) with $|Z| > 2$ is considered an outlier worth inspection. RMSZ is the root-mean-square of all Z scores of the bond lengths (or angles).

Mol	Type	Chain	Res	Link	Bond lengths			Bond angles		
					Counts	RMSZ	# Z > 2	Counts	RMSZ	# Z > 2
4	GOL	C	602	-	5,5,5	0.60	0	5,5,5	0.61	0
3	4NP	C	601	-	13,14,14	1.13	2 (15%)	18,20,20	0.84	0
4	GOL	B	601	-	5,5,5	0.36	0	5,5,5	0.50	0
4	GOL	D	601	-	5,5,5	0.48	0	5,5,5	0.75	0
4	GOL	A	602	-	5,5,5	0.54	0	5,5,5	0.61	0
3	4NP	A	601	-	13,14,14	1.16	2 (15%)	18,20,20	1.01	2 (11%)

In the following table, the Chirals column lists the number of chiral outliers, the number of chiral centers analysed, the number of these observed in the model and the number defined in the Chemical Component Dictionary. Similar counts are reported in the Torsion and Rings columns. '-' means no outliers of that kind were identified.

Mol	Type	Chain	Res	Link	Chirals	Torsions	Rings
4	GOL	C	602	-	-	2/4/4/4	-
3	4NP	C	601	-	-	2/7/9/9	0/1/1/1

Continued on next page...

Continued from previous page...

Mol	Type	Chain	Res	Link	Chirals	Torsions	Rings
4	GOL	B	601	-	-	2/4/4/4	-
4	GOL	D	601	-	-	3/4/4/4	-
4	GOL	A	602	-	-	2/4/4/4	-
3	4NP	A	601	-	-	2/7/9/9	0/1/1/1

All (4) bond length outliers are listed below:

Mol	Chain	Res	Type	Atoms	Z	Observed(Å)	Ideal(Å)
3	A	601	4NP	C4-N	-2.74	1.38	1.45
3	C	601	4NP	P-O1	2.43	1.63	1.59
3	C	601	4NP	C4-N	-2.38	1.39	1.45
3	A	601	4NP	P-O1	2.28	1.62	1.59

All (2) bond angle outliers are listed below:

Mol	Chain	Res	Type	Atoms	Z	Observed(°)	Ideal(°)
3	A	601	4NP	O4-P-O3	2.21	116.06	107.64
3	A	601	4NP	C3-C4-N	-2.02	117.85	119.38

There are no chirality outliers.

All (13) torsion outliers are listed below:

Mol	Chain	Res	Type	Atoms
3	A	601	4NP	C3-C4-N-O6
3	A	601	4NP	C5-C4-N-O6
3	C	601	4NP	C3-C4-N-O6
3	C	601	4NP	C5-C4-N-O6
4	A	602	GOL	O1-C1-C2-O2
4	A	602	GOL	O1-C1-C2-C3
4	B	601	GOL	C1-C2-C3-O3
4	D	601	GOL	C1-C2-C3-O3
4	B	601	GOL	O2-C2-C3-O3
4	D	601	GOL	O2-C2-C3-O3
4	C	602	GOL	C1-C2-C3-O3
4	C	602	GOL	O2-C2-C3-O3
4	D	601	GOL	O1-C1-C2-O2

There are no ring outliers.

1 monomer is involved in 1 short contact:

Mol	Chain	Res	Type	Clashes	Symm-Clashes
3	A	601	4NP	1	0

5.7 Other polymers [i](#)

There are no such residues in this entry.

5.8 Polymer linkage issues [i](#)

There are no chain breaks in this entry.

6 Fit of model and data [i](#)

6.1 Protein, DNA and RNA chains [i](#)

In the following table, the column labelled ‘#RSRZ > 2’ contains the number (and percentage) of RSRZ outliers, followed by percent RSRZ outliers for the chain as percentile scores relative to all X-ray entries and entries of similar resolution. The OWAB column contains the minimum, median, 95th percentile and maximum values of the occupancy-weighted average B-factor per residue. The column labelled ‘Q < 0.9’ lists the number of (and percentage) of residues with an average occupancy less than 0.9.

Mol	Chain	Analysed	<RSRZ>	#RSRZ>2	OWAB(Å ²)	Q<0.9
1	A	513/518 (99%)	-0.06	5 (0%) 82 80	21, 41, 66, 80	2 (0%)
1	C	513/518 (99%)	-0.10	3 (0%) 89 88	22, 41, 64, 85	2 (0%)
2	B	512/518 (98%)	0.17	21 (4%) 37 31	25, 50, 79, 108	1 (0%)
2	D	512/518 (98%)	0.11	18 (3%) 44 37	24, 50, 77, 102	1 (0%)
All	All	2050/2072 (98%)	0.03	47 (2%) 60 55	21, 45, 73, 108	6 (0%)

All (47) RSRZ outliers are listed below:

Mol	Chain	Res	Type	RSRZ
2	B	421	GLY	7.6
2	B	420	ASP	7.3
2	D	421	GLY	6.9
2	D	447	HIS	4.8
2	B	445	SER	4.8
2	B	423	LEU	3.7
2	D	266	GLU	3.4
1	A	367	TRP	3.3
2	B	422	GLY	3.1
2	D	488	GLY	3.1
2	B	266	GLU	3.1
2	B	490	ALA	3.0
2	B	447	HIS	3.0
2	D	118	ALA	2.9
2	D	411	GLY	2.9
2	B	306	ASP	2.8
2	B	411	GLY	2.7
1	C	367	TRP	2.7
2	D	420	ASP	2.7
2	B	510	ALA	2.7
2	B	495	ALA	2.6

Continued on next page...

Continued from previous page...

Mol	Chain	Res	Type	RSRZ
2	D	444	PRO	2.6
2	B	491	MET	2.6
2	B	481	TRP	2.5
1	A	481	TRP	2.5
2	B	118	ALA	2.5
2	D	445	SER	2.5
2	D	364	ALA	2.5
2	D	477	ARG	2.4
2	B	511	LYS	2.4
2	D	423	LEU	2.4
2	D	157	ASP	2.4
2	D	349	GLY	2.4
2	B	212	LYS	2.3
1	C	481	TRP	2.3
1	C	479	ASN	2.3
2	D	274	TYR	2.2
2	D	156	ALA	2.2
1	A	232	GLU	2.2
1	A	318	ALA	2.2
2	D	408	ARG	2.1
2	B	338	THR	2.1
2	B	419	VAL	2.1
2	B	208	CYS	2.1
2	D	318	ALA	2.1
1	A	234	ASP	2.1
2	B	364	ALA	2.0

6.2 Non-standard residues in protein, DNA, RNA chains [\(i\)](#)

In the following table, the Atoms column lists the number of modelled atoms in the group and the number defined in the chemical component dictionary. The B-factors column lists the minimum, median, 95th percentile and maximum values of B factors of atoms in the group. The column labelled 'Q<0.9' lists the number of atoms with occupancy less than 0.9.

Mol	Type	Chain	Res	Atoms	RSCC	RSR	B-factors(Å ²)	Q<0.9
2	TPO	B	276	11/12	0.91	0.13	48,52,55,55	0
2	TPO	D	276	11/12	0.91	0.14	44,50,53,53	0

6.3 Carbohydrates [\(i\)](#)

There are no monosaccharides in this entry.

6.4 Ligands [i](#)

In the following table, the Atoms column lists the number of modelled atoms in the group and the number defined in the chemical component dictionary. The B-factors column lists the minimum, median, 95th percentile and maximum values of B factors of atoms in the group. The column labelled 'Q<0.9' lists the number of atoms with occupancy less than 0.9.

Mol	Type	Chain	Res	Atoms	RSCC	RSR	B-factors(Å ²)	Q<0.9
3	4NP	C	601	14/14	0.86	0.18	74,85,88,88	0
3	4NP	A	601	14/14	0.88	0.18	67,75,78,79	0
4	GOL	A	602	6/6	0.93	0.18	41,44,47,48	0
4	GOL	C	602	6/6	0.93	0.21	42,44,45,46	0
4	GOL	D	601	6/6	0.95	0.20	28,29,30,31	0
4	GOL	B	601	6/6	0.97	0.20	27,28,29,29	0

6.5 Other polymers [i](#)

There are no such residues in this entry.