



wwPDB X-ray Structure Validation Summary Report ⓘ

Jan 4, 2021 – 01:09 pm GMT

PDB ID : 7AID
Title : HIV-1 REVERSE TRANSCRIPTASE COMPLEX WITH DNA AND D-ASPARTATE TENOFOVIR
Authors : Gu, W.; Martinez, S.E.; Nguyen, H.; Xu, H.; Herdewijn, P.; de Jonghe, S.; Das, K.
Deposited on : 2020-09-26
Resolution : 3.15 Å(reported)

This is a wwPDB X-ray Structure Validation Summary Report for a publicly released PDB entry.

We welcome your comments at validation@mail.wwpdb.org

A user guide is available at

<https://www.wwpdb.org/validation/2017/XrayValidationReportHelp>

with specific help available everywhere you see the ⓘ symbol.

The following versions of software and data (see [references ⓘ](#)) were used in the production of this report:

MolProbity : 4.02b-467
Mogul : 1.8.5 (274361), CSD as541be (2020)
Xtriage (Phenix) : 1.13
EDS : 2.16
buster-report : 1.1.7 (2018)
Percentile statistics : 20191225.v01 (using entries in the PDB archive December 25th 2019)
Refmac : 5.8.0158
CCP4 : 7.0.044 (Gargrove)
Ideal geometry (proteins) : Engh & Huber (2001)
Ideal geometry (DNA, RNA) : Parkinson et al. (1996)
Validation Pipeline (wwPDB-VP) : 2.16

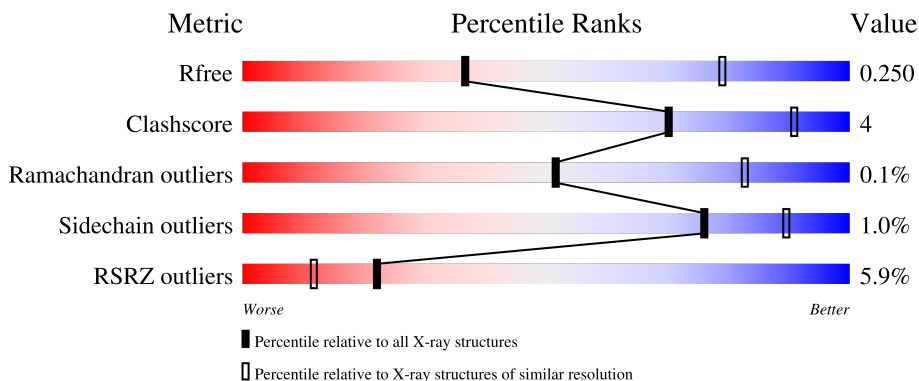
1 Overall quality at a glance

The following experimental techniques were used to determine the structure:

X-RAY DIFFRACTION

The reported resolution of this entry is 3.15 Å.

Percentile scores (ranging between 0-100) for global validation metrics of the entry are shown in the following graphic. The table shows the number of entries on which the scores are based.






Metric	Whole archive (#Entries)	Similar resolution (#Entries, resolution range(Å))
R_{free}	130704	1665 (3.20-3.12)
Clashscore	141614	1804 (3.20-3.12)
Ramachandran outliers	138981	1770 (3.20-3.12)
Sidechain outliers	138945	1769 (3.20-3.12)
RSRZ outliers	127900	1616 (3.20-3.12)

The table below summarises the geometric issues observed across the polymeric chains and their fit to the electron density. The red, orange, yellow and green segments of the lower bar indicate the fraction of residues that contain outliers for ≥ 3 , 2, 1 and 0 types of geometric quality criteria respectively. A grey segment represents the fraction of residues that are not modelled. The numeric value for each fraction is indicated below the corresponding segment, with a dot representing fractions $\leq 5\%$. The upper red bar (where present) indicates the fraction of residues that have poor fit to the electron density. The numeric value is given above the bar.

Mol	Chain	Length	Quality of chain
1	A	556	 10% 90% 9% .
1	C	556	 8% 89% 11%
2	B	428	 % 86% 9% .
2	D	428	 3% 85% 11% .
3	E	27	 7% 52% 33% 15%

Continued on next page...

Continued from previous page...

Mol	Chain	Length	Quality of chain
3	T	27	 59% 26% 15%
4	F	21	 62% 33% 5%
4	P	21	 76% 19% 5%

2 Entry composition [i](#)

There are 6 unique types of molecules in this entry. The entry contains 17684 atoms, of which 0 are hydrogens and 0 are deuteriums.

In the tables below, the ZeroOcc column contains the number of atoms modelled with zero occupancy, the AltConf column contains the number of residues with at least one atom in alternate conformation and the Trace column contains the number of residues modelled with at most 2 atoms.

- Molecule 1 is a protein called Gag-Pol polyprotein.

Mol	Chain	Residues	Atoms					ZeroOcc	AltConf	Trace
			Total	C	N	O	S			
1	A	555	Total	C	N	O	S	0	0	0
			4513	2922	751	832	8			
1	C	556	Total	C	N	O	S	0	0	0
			4521	2927	752	833	9			

There are 10 discrepancies between the modelled and reference sequences:

Chain	Residue	Modelled	Actual	Comment	Reference
A	-1	MET	-	initiating methionine	UNP P03366
A	0	VAL	-	expression tag	UNP P03366
A	258	CYS	GLN	engineered mutation	UNP P03366
A	280	SER	CYS	engineered mutation	UNP P03366
A	498	ASN	ASP	engineered mutation	UNP P03366
C	-1	MET	-	initiating methionine	UNP P03366
C	0	VAL	-	expression tag	UNP P03366
C	258	CYS	GLN	engineered mutation	UNP P03366
C	280	SER	CYS	engineered mutation	UNP P03366
C	498	ASN	ASP	engineered mutation	UNP P03366

- Molecule 2 is a protein called Gag-Pol polyprotein.

Mol	Chain	Residues	Atoms					ZeroOcc	AltConf	Trace
			Total	C	N	O	S			
2	B	411	Total	C	N	O	S	0	0	0
			3401	2215	563	616	7			
2	D	412	Total	C	N	O	S	0	0	0
			3400	2212	563	619	6			

There are 2 discrepancies between the modelled and reference sequences:

Chain	Residue	Modelled	Actual	Comment	Reference
B	280	SER	CYS	engineered mutation	UNP P03366
D	280	SER	CYS	engineered mutation	UNP P03366

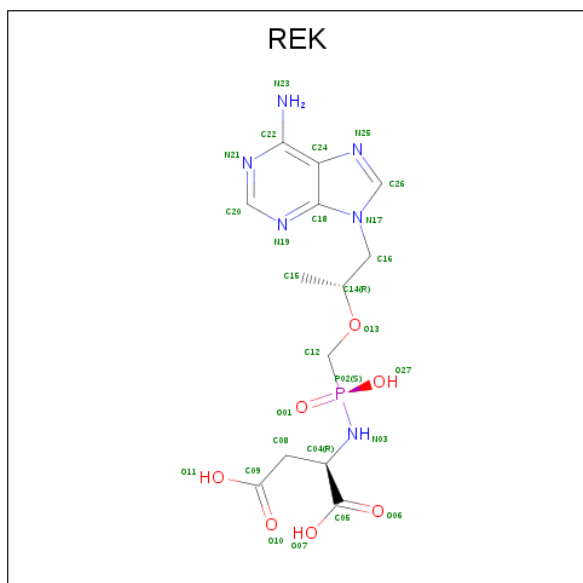
- Molecule 3 is a DNA chain called DNA (5'-D(P*GP*GP*TP*CP*GP*GP*CP*GP*CP*CP*CP*GP*AP*AP*CP*AP*GP*GP*GP*AP*CP*TP*G)-3').

Mol	Chain	Residues	Atoms					ZeroOcc	AltConf	Trace
3	T	23	Total	C	N	O	P	0	0	0
			478	223	95	137	23			
3	E	23	Total	C	N	O	P	0	0	0
			477	223	95	136	23			

- Molecule 4 is a DNA chain called DNA (5'-D(*CP*AP*GP*TP*CP*CP*CP*TP*GP*TP*TP*CP*GP*GP*(MRG)P*CP*GP*CP*CP*(DDG))-3').

Mol	Chain	Residues	Atoms					ZeroOcc	AltConf	Trace
4	P	20	Total	C	N	O	P	0	0	0
			403	192	72	120	19			
4	F	20	Total	C	N	O	P	0	0	0
			403	192	72	120	19			

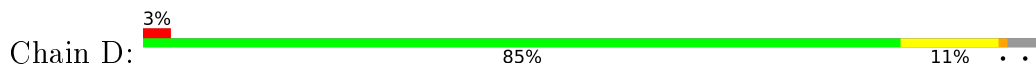
- Molecule 5 is D-Aspartate Tenofovir (three-letter code: REK) (formula: C₁₃H₁₉N₆O₇P) (labeled as "Ligand of Interest" by depositor).



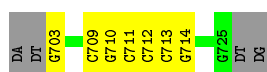
Mol	Chain	Residues	Atoms		ZeroOcc	AltConf
6	A	14	Total 14	O 14	0	0
6	B	17	Total 17	O 17	0	0
6	C	14	Total 14	O 14	0	0
6	D	13	Total 13	O 13	0	0
6	E	3	Total 3	O 3	0	0



- Molecule 2: Gag-Pol polyprotein



- Molecule 3: DNA (5'-D(P*GP*GP*TP*CP*GP*GP*CP*GP*CP*CP*CP*GP*AP*AP*CP*A P*GP*GP*GP*AP*CP*TP*G)-3')



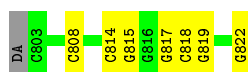
- Molecule 3: DNA (5'-D(P*GP*GP*TP*CP*GP*GP*CP*GP*CP*CP*CP*GP*AP*AP*CP*A P*GP*GP*GP*AP*CP*TP*G)-3')



- Molecule 4: DNA (5'-D(*CP*AP*GP*TP*CP*CP*CP*TP*GP*TP*TP*CP*GP*GP*(MRG) P*CP*GP*CP*CP*(DDG))-3')



- Molecule 4: DNA (5'-D(*CP*AP*GP*TP*CP*CP*CP*TP*GP*TP*TP*CP*GP*GP*(MRG) P*CP*GP*CP*CP*(DDG))-3')



4 Data and refinement statistics

Property	Value	Source
Space group	P 1 21 1	Depositor
Cell constants a, b, c, α , β , γ	89.86Å 133.46Å 140.23Å 90.00° 98.35° 90.00°	Depositor
Resolution (Å)	53.37 – 3.15 53.37 – 3.15	Depositor EDS
% Data completeness (in resolution range)	98.9 (53.37-3.15) 98.9 (53.37-3.15)	Depositor EDS
R_{merge}	0.19	Depositor
R_{sym}	(Not available)	Depositor
$\langle I/\sigma(I) \rangle$ ¹	1.57 (at 3.13Å)	Xtrriage
Refinement program	PHENIX 1.18.2_3874	Depositor
R, R_{free}	0.214 , 0.250 0.214 , 0.250	Depositor DCC
R_{free} test set	1630 reflections (2.90%)	wwPDB-VP
Wilson B-factor (Å ²)	87.7	Xtrriage
Anisotropy	0.262	Xtrriage
Bulk solvent k_{sol} (e/Å ³), B_{sol} (Å ²)	0.29 , 61.2	EDS
L-test for twinning ²	$\langle L \rangle = 0.47$, $\langle L^2 \rangle = 0.30$	Xtrriage
Estimated twinning fraction	No twinning to report.	Xtrriage
F_o, F_c correlation	0.94	EDS
Total number of atoms	17684	wwPDB-VP
Average B, all atoms (Å ²)	106.0	wwPDB-VP

Xtrriage's analysis on translational NCS is as follows: *The largest off-origin peak in the Patterson function is 2.86% of the height of the origin peak. No significant pseudotranslation is detected.*

¹Intensities estimated from amplitudes.

²Theoretical values of $\langle |L| \rangle$, $\langle L^2 \rangle$ for acentric reflections are 0.5, 0.333 respectively for untwinned datasets, and 0.375, 0.2 for perfectly twinned datasets.

5 Model quality [i](#)

5.1 Standard geometry [i](#)

Bond lengths and bond angles in the following residue types are not validated in this section: REK, MRG, DDG

The Z score for a bond length (or angle) is the number of standard deviations the observed value is removed from the expected value. A bond length (or angle) with $|Z| > 5$ is considered an outlier worth inspection. RMSZ is the root-mean-square of all Z scores of the bond lengths (or angles).

Mol	Chain	Bond lengths		Bond angles	
		RMSZ	# Z >5	RMSZ	# Z >5
1	A	0.23	0/4631	0.40	0/6293
1	C	0.23	0/4639	0.40	0/6303
2	B	0.23	0/3499	0.40	0/4752
2	D	0.23	0/3497	0.41	0/4751
3	E	0.48	0/536	0.78	0/826
3	T	0.66	1/537 (0.2%)	0.77	0/826
4	F	0.55	0/400	0.91	0/612
4	P	0.51	0/400	0.88	0/612
All	All	0.28	1/18139 (0.0%)	0.47	0/24975

All (1) bond length outliers are listed below:

Mol	Chain	Res	Type	Atoms	Z	Observed(Å)	Ideal(Å)
3	T	703	DG	OP3-P	-10.60	1.48	1.61

There are no bond angle outliers.

There are no chirality outliers.

There are no planarity outliers.

5.2 Too-close contacts [i](#)

In the following table, the Non-H and H(model) columns list the number of non-hydrogen atoms and hydrogen atoms in the chain respectively. The H(added) column lists the number of hydrogen atoms added and optimized by MolProbity. The Clashes column lists the number of clashes within the asymmetric unit, whereas Symm-Clashes lists symmetry-related clashes.

Mol	Chain	Non-H	H(model)	H(added)	Clashes	Symm-Clashes
1	A	4513	0	4578	31	0
1	C	4521	0	4587	33	0

Continued on next page...

Continued from previous page...

Mol	Chain	Non-H	H(model)	H(added)	Clashes	Symm-Clashes
2	B	3401	0	3431	25	0
2	D	3400	0	3433	29	0
3	E	477	0	256	5	0
3	T	478	0	256	4	0
4	F	403	0	224	6	0
4	P	403	0	224	4	0
5	C	27	0	0	1	0
6	A	14	0	0	0	0
6	B	17	0	0	1	0
6	C	14	0	0	0	0
6	D	13	0	0	0	0
6	E	3	0	0	0	0
All	All	17684	0	16989	122	0

The all-atom clashscore is defined as the number of clashes found per 1000 atoms (including hydrogen atoms). The all-atom clashscore for this structure is 4.

The worst 5 of 122 close contacts within the same asymmetric unit are listed below, sorted by their clash magnitude.

Atom-1	Atom-2	Interatomic distance (Å)	Clash overlap (Å)
1:A:181:TYR:HB2	1:A:188:TYR:HB3	1.77	0.67
1:C:181:TYR:HB2	1:C:188:TYR:HB3	1.75	0.67
1:C:184:MET:HG3	4:F:822:DDG:H1'	1.77	0.67
1:C:78:ARG:HD2	3:E:705:DT:H5''	1.77	0.67
1:A:543:GLY:N	2:B:283:LEU:O	2.30	0.65

There are no symmetry-related clashes.

5.3 Torsion angles [i](#)

5.3.1 Protein backbone [i](#)

In the following table, the Percentiles column shows the percent Ramachandran outliers of the chain as a percentile score with respect to all X-ray entries followed by that with respect to entries of similar resolution.

The Analysed column shows the number of residues for which the backbone conformation was analysed, and the total number of residues.

Mol	Chain	Analysed	Favoured	Allowed	Outliers	Percentiles	
1	A	553/556 (100%)	534 (97%)	19 (3%)	0	100	100
1	C	554/556 (100%)	536 (97%)	17 (3%)	1 (0%)	47	78
2	B	407/428 (95%)	388 (95%)	19 (5%)	0	100	100
2	D	408/428 (95%)	389 (95%)	19 (5%)	0	100	100
All	All	1922/1968 (98%)	1847 (96%)	74 (4%)	1 (0%)	51	83

All (1) Ramachandran outliers are listed below:

Mol	Chain	Res	Type
1	C	332	GLN

5.3.2 Protein sidechains [i](#)

In the following table, the Percentiles column shows the percent sidechain outliers of the chain as a percentile score with respect to all X-ray entries followed by that with respect to entries of similar resolution.

The Analysed column shows the number of residues for which the sidechain conformation was analysed, and the total number of residues.

Mol	Chain	Analysed	Rotameric	Outliers	Percentiles	
1	A	496/497 (100%)	489 (99%)	7 (1%)	67	85
1	C	497/497 (100%)	494 (99%)	3 (1%)	86	94
2	B	373/390 (96%)	370 (99%)	3 (1%)	81	92
2	D	374/390 (96%)	369 (99%)	5 (1%)	69	86
All	All	1740/1774 (98%)	1722 (99%)	18 (1%)	76	89

5 of 18 residues with a non-rotameric sidechain are listed below:

Mol	Chain	Res	Type
2	B	414	TRP
2	B	422	LEU
2	D	232	TYR
1	A	388	LYS
2	B	92	LEU

Sometimes sidechains can be flipped to improve hydrogen bonding and reduce clashes. There are no such sidechains identified.

5.3.3 RNA [i](#)

There are no RNA molecules in this entry.

5.4 Non-standard residues in protein, DNA, RNA chains [i](#)

4 non-standard protein/DNA/RNA residues are modelled in this entry.

There are no bond length outliers.

There are no bond angle outliers.

There are no chirality outliers.

There are no torsion outliers.

There are no ring outliers.

No monomer is involved in short contacts.

5.5 Carbohydrates [i](#)

There are no monosaccharides in this entry.

5.6 Ligand geometry [i](#)

1 ligand is modelled in this entry.

There are no bond length outliers.

There are no bond angle outliers.

There are no chirality outliers.

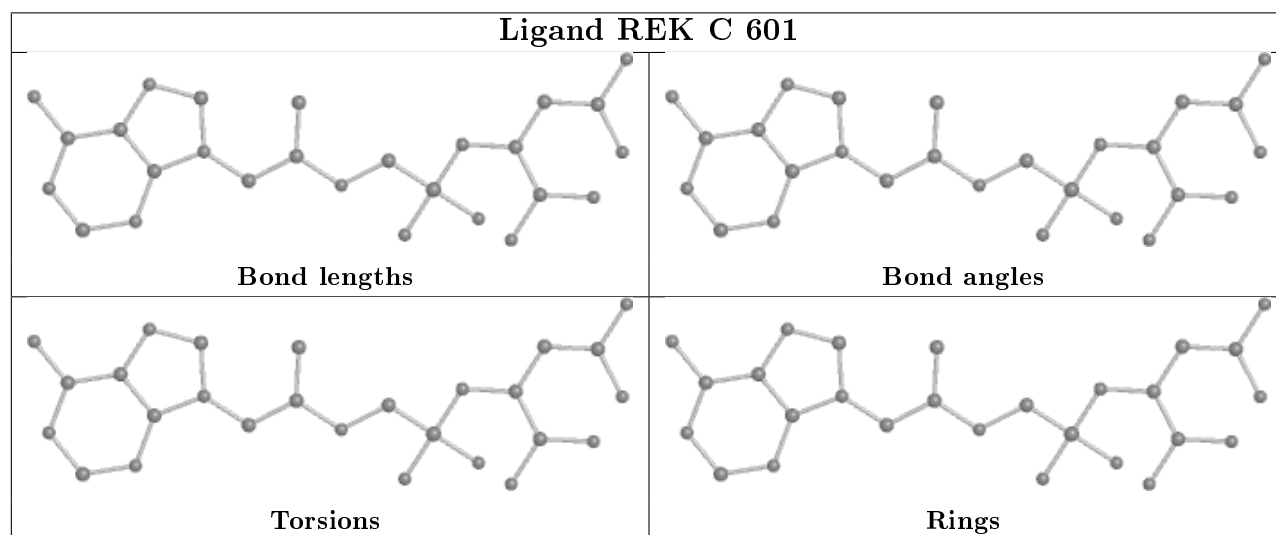
There are no torsion outliers.

There are no ring outliers.

No monomer is involved in short contacts.

The following is a two-dimensional graphical depiction of Mogul quality analysis of bond lengths, bond angles, torsion angles, and ring geometry for all instances of the Ligand of Interest. In addition, ligands with molecular weight > 250 and outliers as shown on the validation Tables will also be included. For torsion angles, if less than 5% of the Mogul distribution of torsion angles is within 10 degrees of the torsion angle in question, then that torsion angle is considered an outlier. Any bond that is central to one or more torsion angles identified as an outlier by Mogul will be highlighted in the graph. For rings, the root-mean-square deviation (RMSD) between the ring in question and similar rings identified by Mogul is calculated over all ring torsion angles. If the average RMSD is greater than 60 degrees and the minimal RMSD between the ring in question and any Mogul-identified rings is also greater than 60 degrees, then that ring is considered an outlier.

The outliers are highlighted in purple. The color gray indicates Mogul did not find sufficient equivalents in the CSD to analyse the geometry.



5.7 Other polymers [i](#)

There are no such residues in this entry.

5.8 Polymer linkage issues [i](#)

There are no chain breaks in this entry.

6 Fit of model and data [i](#)

6.1 Protein, DNA and RNA chains [i](#)

In the following table, the column labelled '#RSRZ > 2' contains the number (and percentage) of RSRZ outliers, followed by percent RSRZ outliers for the chain as percentile scores relative to all X-ray entries and entries of similar resolution. The OWAB column contains the minimum, median, 95th percentile and maximum values of the occupancy-weighted average B-factor per residue. The column labelled 'Q < 0.9' lists the number of (and percentage) of residues with an average occupancy less than 0.9.

Mol	Chain	Analysed	<RSRZ>	#RSRZ>2	OWAB(Å ²)	Q<0.9
1	A	555/556 (99%)	0.40	58 (10%) 6 3	38, 108, 211, 237	0
1	C	556/556 (100%)	0.36	42 (7%) 13 7	38, 111, 204, 221	0
2	B	411/428 (96%)	0.01	4 (0%) 82 73	36, 79, 132, 156	0
2	D	412/428 (96%)	0.21	12 (2%) 51 35	45, 96, 152, 168	0
3	E	23/27 (85%)	0.14	2 (8%) 10 5	87, 137, 201, 237	0
3	T	23/27 (85%)	-0.26	0 100 100	103, 157, 215, 241	0
4	F	18/21 (85%)	-0.18	0 100 100	83, 124, 201, 202	0
4	P	18/21 (85%)	-0.50	0 100 100	99, 133, 193, 197	0
All	All	2016/2064 (97%)	0.25	118 (5%) 22 12	36, 100, 188, 241	0

The worst 5 of 118 RSRZ outliers are listed below:

Mol	Chain	Res	Type	RSRZ
1	A	67	ASP	6.8
2	D	214	LEU	6.7
1	C	26	LEU	6.2
1	C	133	PRO	6.1
1	A	73	LYS	6.1

6.2 Non-standard residues in protein, DNA, RNA chains [i](#)

In the following table, the Atoms column lists the number of modelled atoms in the group and the number defined in the chemical component dictionary. The B-factors column lists the minimum, median, 95th percentile and maximum values of B factors of atoms in the group. The column labelled 'Q < 0.9' lists the number of atoms with occupancy less than 0.9.

Mol	Type	Chain	Res	Atoms	RSCC	RSR	B-factors(Å ²)	Q<0.9
4	MRG	P	817	22/27	0.86	0.11	139,156,164,165	0

Continued on next page...

Continued from previous page...

Mol	Type	Chain	Res	Atoms	RSCC	RSR	B-factors(\AA^2)	Q<0.9
4	MRG	F	817	22/27	0.87	0.15	119,136,148,165	0
4	DDG	P	822	21/22	0.91	0.17	89,107,126,130	0
4	DDG	F	822	21/22	0.92	0.21	94,113,122,123	0

6.3 Carbohydrates [i](#)

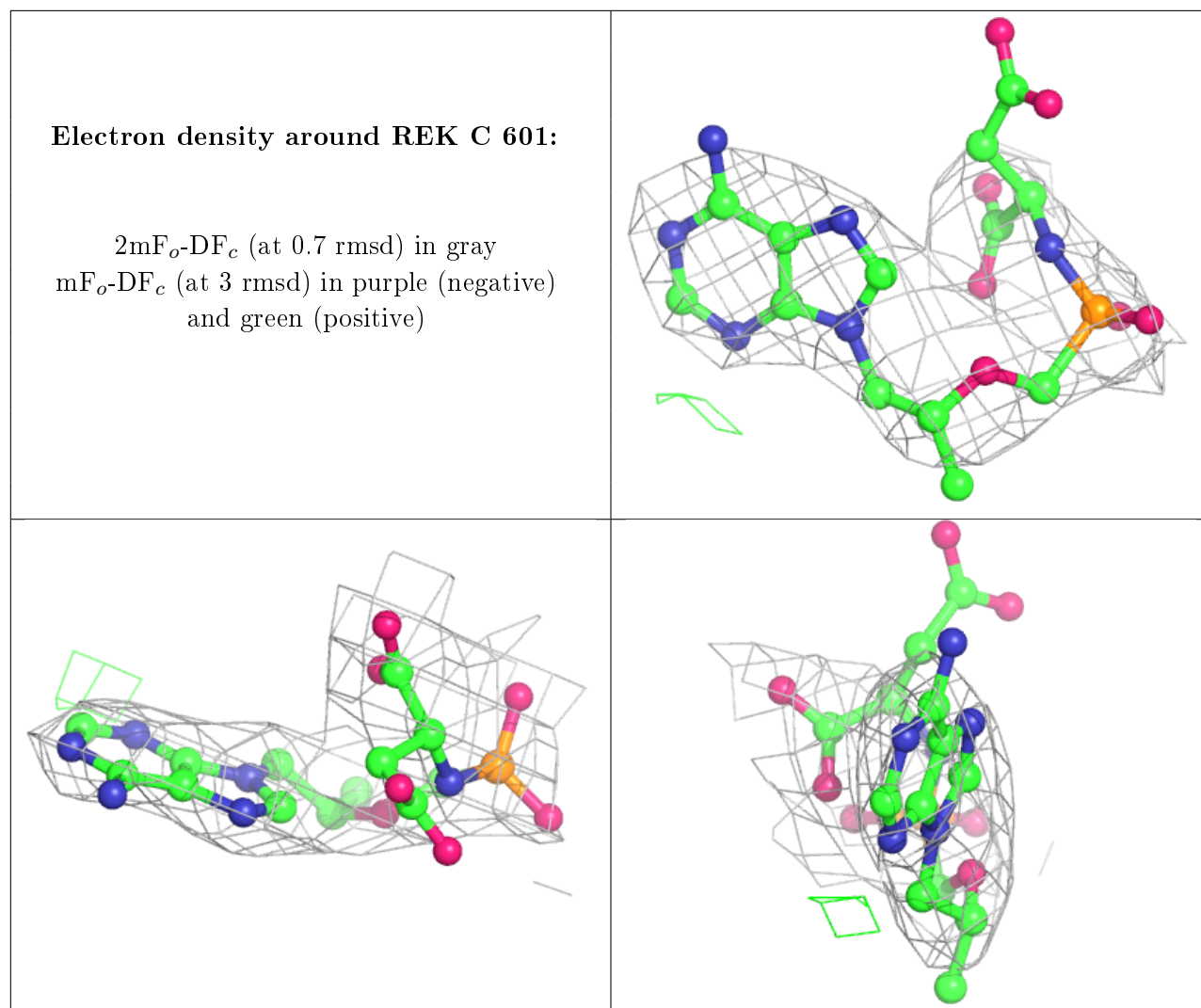
There are no monosaccharides in this entry.

6.4 Ligands [i](#)

In the following table, the Atoms column lists the number of modelled atoms in the group and the number defined in the chemical component dictionary. The B-factors column lists the minimum, median, 95th percentile and maximum values of B factors of atoms in the group. The column labelled 'Q< 0.9' lists the number of atoms with occupancy less than 0.9.

Mol	Type	Chain	Res	Atoms	RSCC	RSR	B-factors(\AA^2)	Q<0.9
5	REK	C	601	27/27	0.80	0.27	140,145,164,174	0

The following is a graphical depiction of the model fit to experimental electron density of all instances of the Ligand of Interest. In addition, ligands with molecular weight > 250 and outliers as shown on the geometry validation Tables will also be included. Each fit is shown from different orientation to approximate a three-dimensional view.



6.5 Other polymers [i](#)

There are no such residues in this entry.