



wwPDB X-ray Structure Validation Summary Report ⓘ

May 29, 2024 – 02:07 PM EDT

PDB ID : 1ABB
Title : CONTROL OF PHOSPHORYLASE B CONFORMATION BY A MODIFIED COFACTOR: CRYSTALLOGRAPHIC STUDIES ON R-STATE GLYCOGEN PHOSPHORYLASE RECONSTITUTED WITH PYRIDOXAL 5'-DIPHOSPHATE
Authors : Leonidas, D.D.; Oikonomakos, N.G.; Papageorgiou, A.C.; Acharya, K.R.; Barford, D.; Johnson, L.N.
Deposited on : 1992-04-09
Resolution : 2.80 Å(reported)

This is a wwPDB X-ray Structure Validation Summary Report for a publicly released PDB entry.

We welcome your comments at validation@mail.wwpdb.org

A user guide is available at

<https://www.wwpdb.org/validation/2017/XrayValidationReportHelp>

with specific help available everywhere you see the ⓘ symbol.

The types of validation reports are described at

<http://www.wwpdb.org/validation/2017/FAQs#types>.

The following versions of software and data (see [references ⓘ](#)) were used in the production of this report:

MolProbity : 4.02b-467
Mogul : 1.8.5 (274361), CSD as541be (2020)
Xtrriage (Phenix) : **NOT EXECUTED**
EDS : **NOT EXECUTED**
buster-report : 1.1.7 (2018)
Percentile statistics : 20191225.v01 (using entries in the PDB archive December 25th 2019)
Ideal geometry (proteins) : Engh & Huber (2001)
Ideal geometry (DNA, RNA) : Parkinson et al. (1996)
Validation Pipeline (wwPDB-VP) : 2.36.2

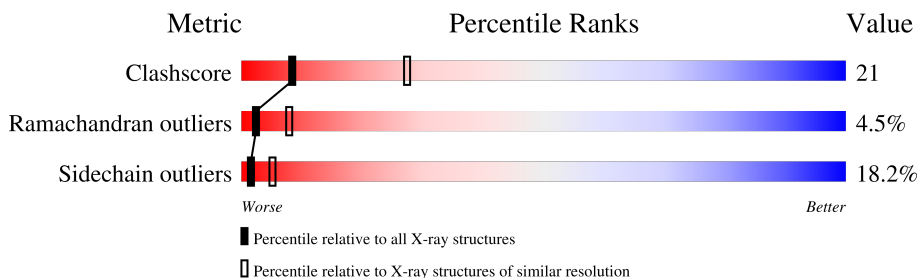
1 Overall quality at a glance

The following experimental techniques were used to determine the structure:

X-RAY DIFFRACTION

The reported resolution of this entry is 2.80 Å.

Percentile scores (ranging between 0-100) for global validation metrics of the entry are shown in the following graphic. The table shows the number of entries on which the scores are based.



Metric	Whole archive (#Entries)	Similar resolution (#Entries, resolution range(Å))
Clashscore	141614	3569 (2.80-2.80)
Ramachandran outliers	138981	3498 (2.80-2.80)
Sidechain outliers	138945	3500 (2.80-2.80)

The table below summarises the geometric issues observed across the polymeric chains and their fit to the electron density. The red, orange, yellow and green segments of the lower bar indicate the fraction of residues that contain outliers for ≥ 3 , 2, 1 and 0 types of geometric quality criteria respectively. A grey segment represents the fraction of residues that are not modelled. The numeric value for each fraction is indicated below the corresponding segment, with a dot representing fractions $\leq 5\%$

Note EDS was not executed.

Mol	Chain	Length	Quality of chain
1	A	828	45% 36% 14% .
1	B	828	40% 39% 15% 5%
1	C	828	43% 39% 14% .
1	D	828	36% 42% 16% 5%

2 Entry composition

There are 4 unique types of molecules in this entry. The entry contains 26960 atoms, of which 0 are hydrogens and 0 are deuteriums.

In the tables below, the ZeroOcc column contains the number of atoms modelled with zero occupancy, the AltConf column contains the number of residues with at least one atom in alternate conformation and the Trace column contains the number of residues modelled with at most 2 atoms.

- Molecule 1 is a protein called GLYCOGEN PHOSPHORYLASE B.

Mol	Chain	Residues	Atoms					ZeroOcc	AltConf	Trace
			Total	C	N	O	S			
1	A	824	6693	4264	1185	1214	30	0	0	1
1	B	824	6693	4264	1185	1214	30	0	0	1
1	C	824	6693	4264	1185	1214	30	0	0	1
1	D	824	6693	4264	1185	1214	30	0	0	1

There are 4 discrepancies between the modelled and reference sequences:

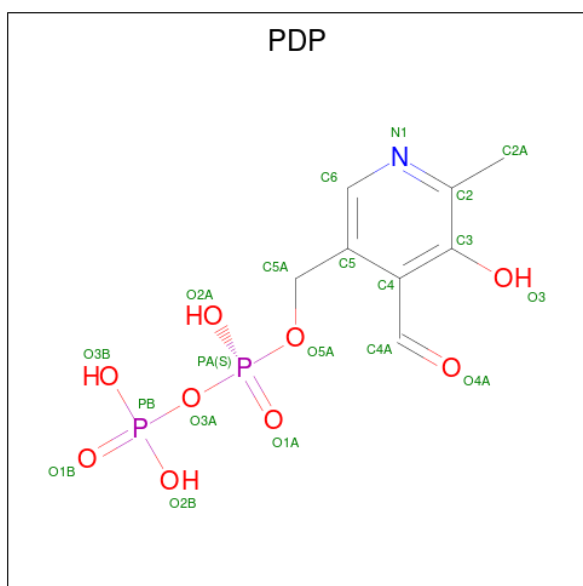
Chain	Residue	Modelled	Actual	Comment	Reference
A	380	ILE	LEU	conflict	UNP P00489
B	380	ILE	LEU	conflict	UNP P00489
C	380	ILE	LEU	conflict	UNP P00489
D	380	ILE	LEU	conflict	UNP P00489

- Molecule 2 is SULFATE ION (three-letter code: SO4) (formula: O₄S).



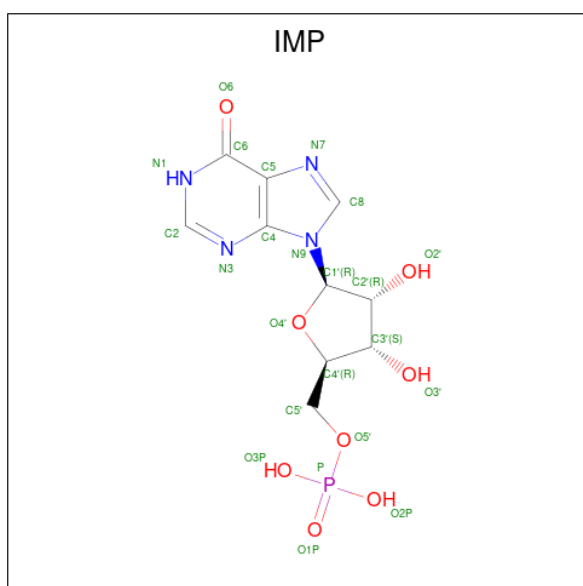
Mol	Chain	Residues	Atoms			ZeroOcc	AltConf
2	A	1	Total	O	S	0	0
			5	4	1		
2	B	1	Total	O	S	0	0
			5	4	1		
2	C	1	Total	O	S	0	0
			5	4	1		
2	D	1	Total	O	S	0	0
			5	4	1		

- Molecule 3 is PYRIDOXAL-5'-DIPHOSPHATE (three-letter code: PDP) (formula: $C_8H_{11}NO_9P_2$).



Mol	Chain	Residues	Atoms					ZeroOcc	AltConf
3	A	1	Total	C	N	O	P	0	0
			19	8	1	8	2		
3	B	1	Total	C	N	O	P	0	0
			19	8	1	8	2		
3	C	1	Total	C	N	O	P	0	0
			19	8	1	8	2		
3	D	1	Total	C	N	O	P	0	0
			19	8	1	8	2		

- Molecule 4 is INOSINIC ACID (three-letter code: IMP) (formula: C₁₀H₁₃N₄O₈P).



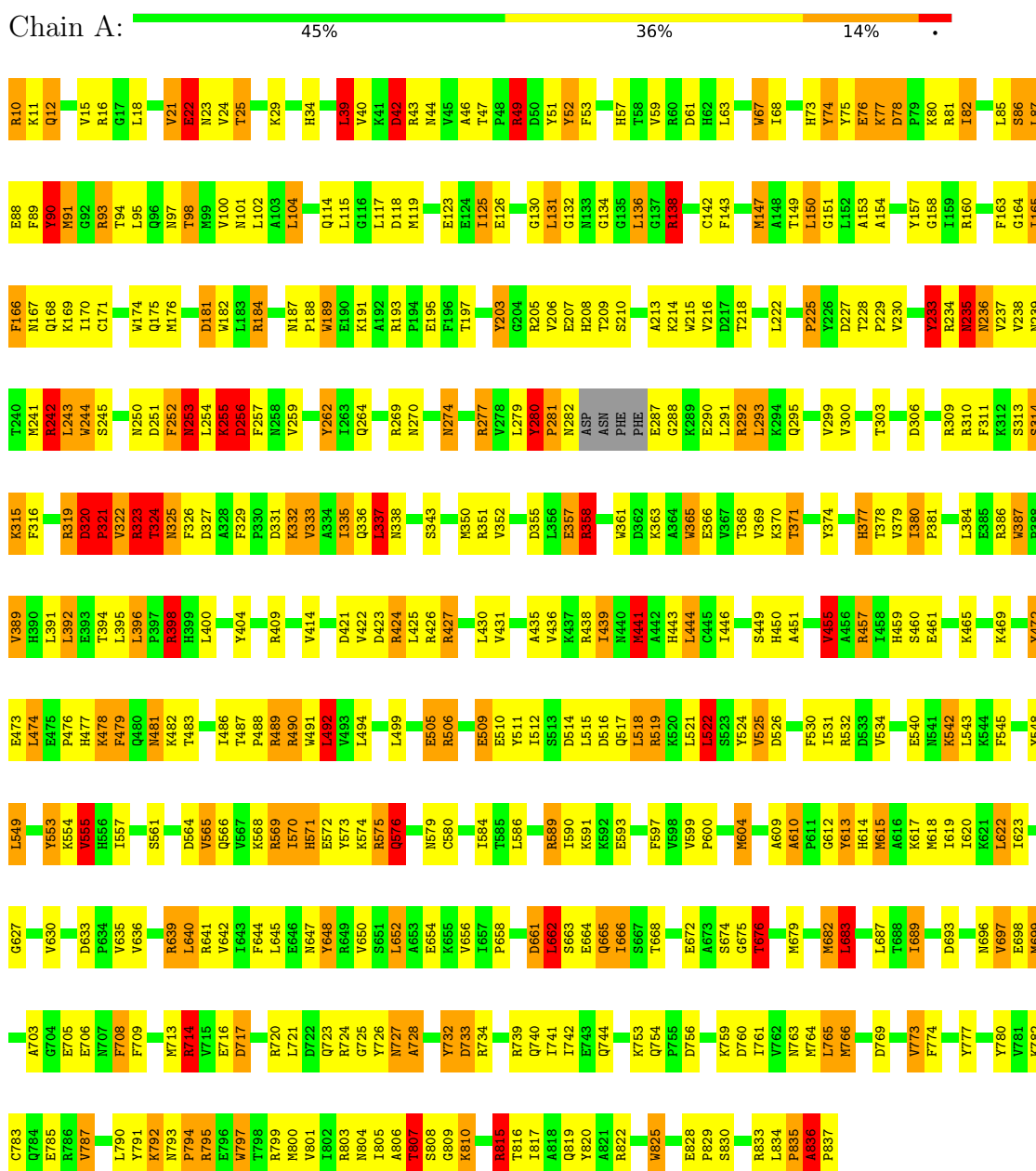
Mol	Chain	Residues	Atoms					ZeroOcc	AltConf
4	A	1	Total	C	N	O	P	0	0
			23	10	4	8	1		
4	B	1	Total	C	N	O	P	0	0
			23	10	4	8	1		
4	C	1	Total	C	N	O	P	0	0
			23	10	4	8	1		
4	D	1	Total	C	N	O	P	0	0
			23	10	4	8	1		

3 Residue-property plots

These plots are drawn for all protein, RNA, DNA and oligosaccharide chains in the entry. The first graphic for a chain summarises the proportions of the various outlier classes displayed in the second graphic. The second graphic shows the sequence view annotated by issues in geometry. Residues are color-coded according to the number of geometric quality criteria for which they contain at least one outlier: green = 0, yellow = 1, orange = 2 and red = 3 or more. Stretches of 2 or more consecutive residues without any outlier are shown as a green connector. Residues present in the sample, but not in the model, are shown in grey.

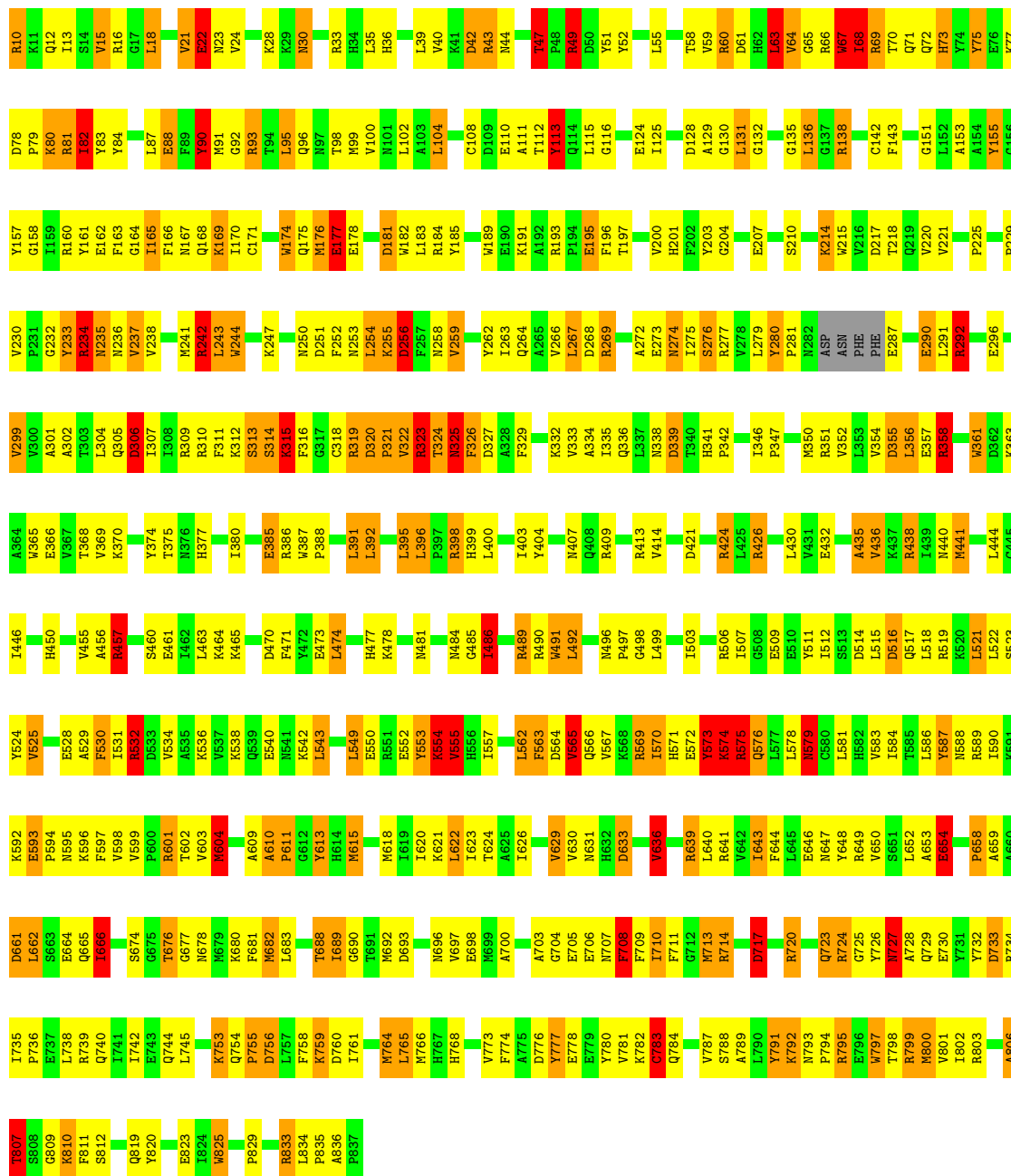
Note EDS was not executed.

• Molecule 1: GLYCOGEN PHOSPHORYLASE B



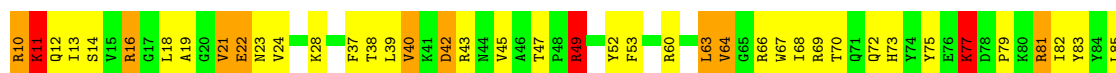
● Molecule 1: GLYCOGEN PHOSPHORYLASE B

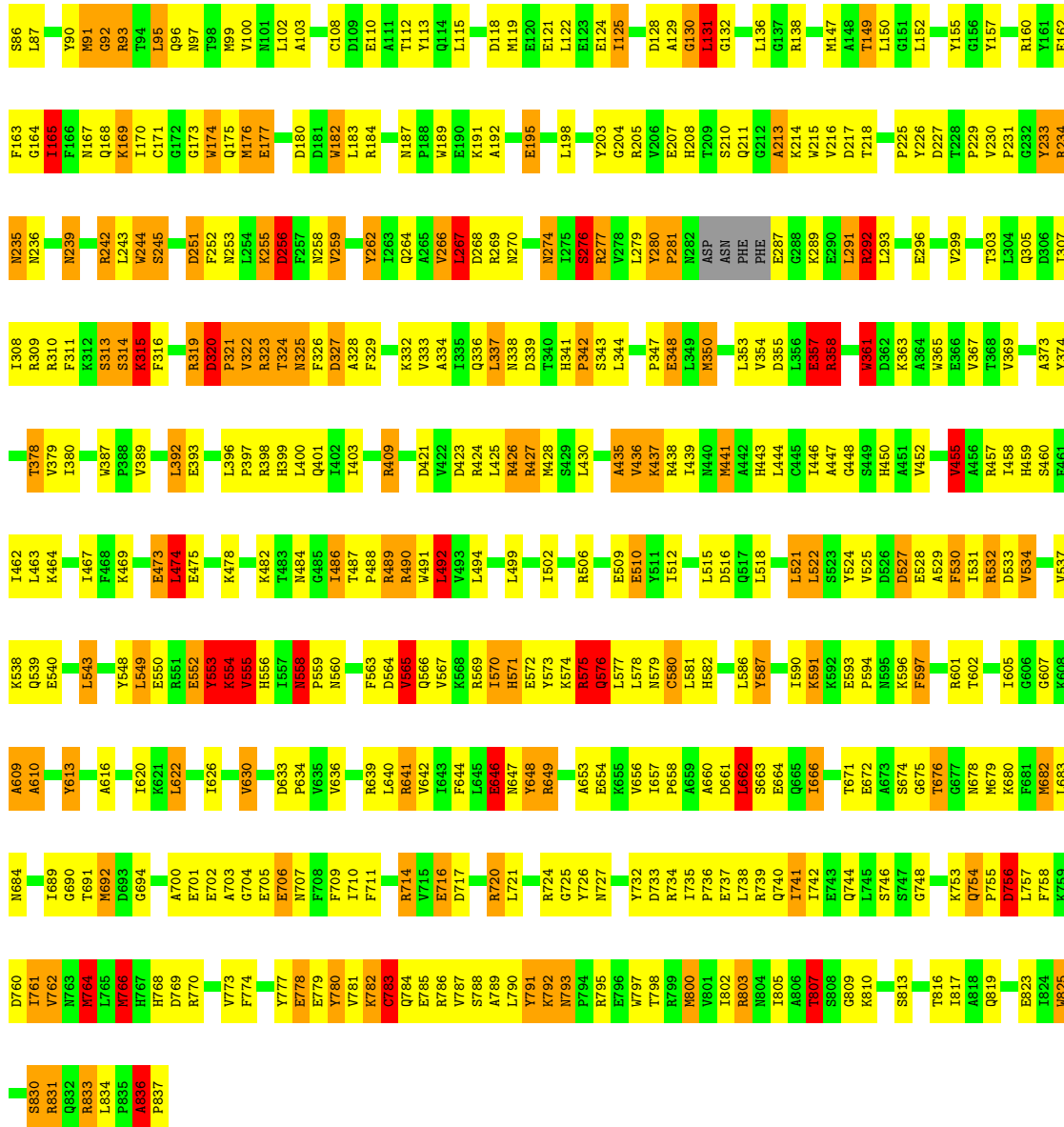
Chain B:  40% 39% 15% 5%



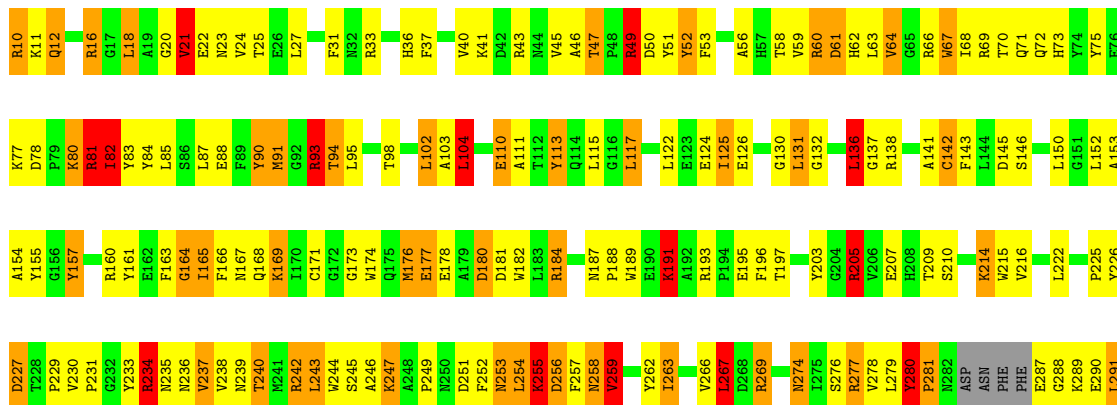
● Molecule 1: GLYCOGEN PHOSPHORYLASE B

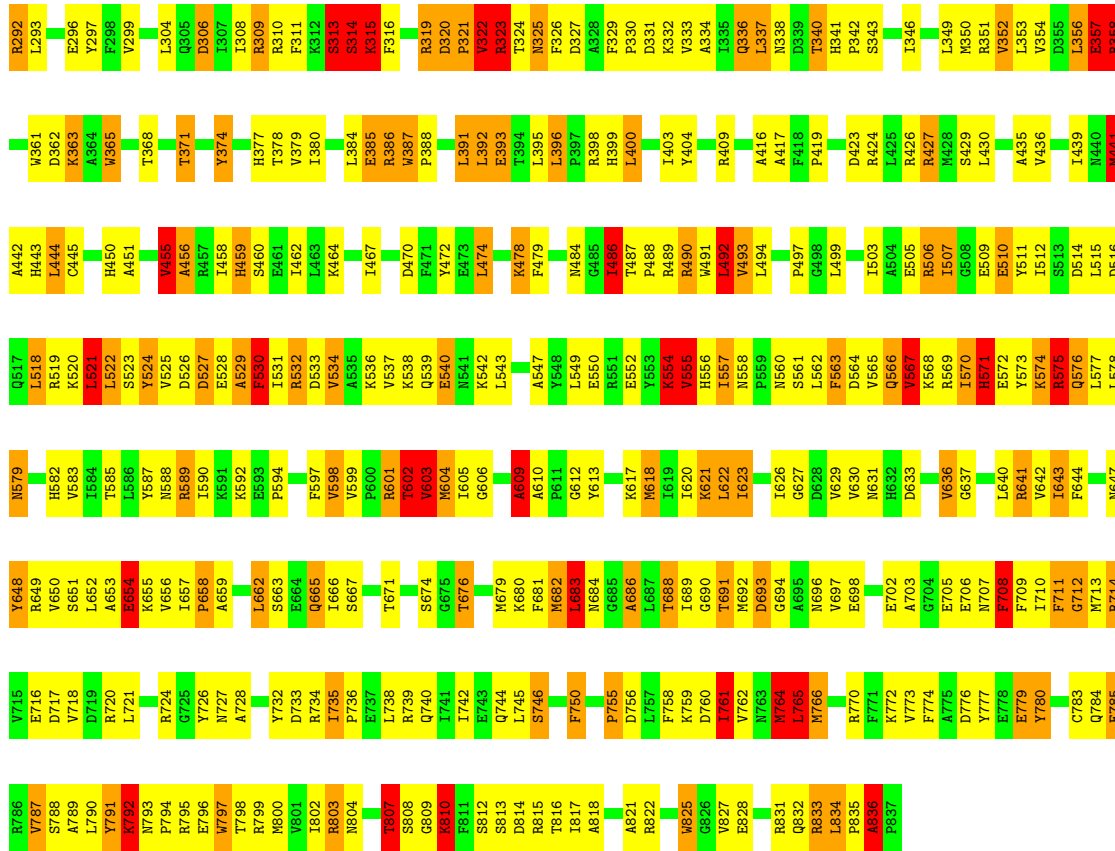
Chain C:  43% 39% 14% 5%





● Molecule 1: GLYCOGEN PHOSPHORYLASE B





4 Data and refinement statistics

Xtrriage (Phenix) and EDS were not executed - this section is therefore incomplete.

Property	Value	Source
Space group	P 1 21 1	Depositor
Cell constants a, b, c, α , β , γ	119.00Å 188.10Å 88.10Å 90.00° 109.29° 90.00°	Depositor
Resolution (Å)	8.00 – 2.80	Depositor
% Data completeness (in resolution range)	(Not available) (8.00-2.80)	Depositor
R_{merge}	(Not available)	Depositor
R_{sym}	(Not available)	Depositor
Refinement program	X-PLOR	Depositor
R, R_{free}	0.210 , (Not available)	Depositor
Estimated twinning fraction	No twinning to report.	Xtrriage
Total number of atoms	26960	wwPDB-VP
Average B, all atoms (Å ²)	31.0	wwPDB-VP

5 Model quality [i](#)

5.1 Standard geometry [i](#)

Bond lengths and bond angles in the following residue types are not validated in this section: IMP, SO4, PDP

The Z score for a bond length (or angle) is the number of standard deviations the observed value is removed from the expected value. A bond length (or angle) with $|Z| > 5$ is considered an outlier worth inspection. RMSZ is the root-mean-square of all Z scores of the bond lengths (or angles).

Mol	Chain	Bond lengths		Bond angles	
		RMSZ	# Z >5	RMSZ	# Z >5
1	A	1.06	2/6843 (0.0%)	2.09	248/9258 (2.7%)
1	B	1.12	7/6843 (0.1%)	2.08	261/9258 (2.8%)
1	C	1.04	3/6843 (0.0%)	2.05	229/9258 (2.5%)
1	D	1.07	6/6843 (0.1%)	2.10	260/9258 (2.8%)
All	All	1.07	18/27372 (0.1%)	2.08	998/37032 (2.7%)

Chiral center outliers are detected by calculating the chiral volume of a chiral center and verifying if the center is modelled as a planar moiety or with the opposite hand. A planarity outlier is detected by checking planarity of atoms in a peptide group, atoms in a mainchain group or atoms of a sidechain that are expected to be planar.

Mol	Chain	#Chirality outliers	#Planarity outliers
1	A	0	6
1	B	0	10
1	C	0	4
1	D	0	7
All	All	0	27

The worst 5 of 18 bond length outliers are listed below:

Mol	Chain	Res	Type	Atoms	Z	Observed(Å)	Ideal(Å)
1	B	68	ILE	N-CA	-23.27	0.99	1.46
1	B	69	ARG	CB-CG	11.74	1.84	1.52
1	B	80	LYS	CA-CB	-10.47	1.30	1.53
1	B	68	ILE	CB-CG1	9.71	1.81	1.54
1	A	586	LEU	CA-CB	-6.57	1.38	1.53

The worst 5 of 998 bond angle outliers are listed below:

Mol	Chain	Res	Type	Atoms	Z	Observed(°)	Ideal(°)
1	A	490	ARG	NE-CZ-NH2	-18.76	110.92	120.30
1	C	160	ARG	NE-CZ-NH2	-18.13	111.23	120.30
1	A	490	ARG	NE-CZ-NH1	17.65	129.13	120.30
1	B	73	HIS	CA-CB-CG	14.99	139.08	113.60
1	C	160	ARG	NE-CZ-NH1	14.81	127.71	120.30

There are no chirality outliers.

5 of 27 planarity outliers are listed below:

Mol	Chain	Res	Type	Group
1	A	138	ARG	Sidechain
1	A	280	TYR	Peptide
1	A	320	ASP	Peptide
1	A	52	TYR	Sidechain
1	A	90	TYR	Sidechain

5.2 Too-close contacts [i](#)

In the following table, the Non-H and H(model) columns list the number of non-hydrogen atoms and hydrogen atoms in the chain respectively. The H(added) column lists the number of hydrogen atoms added and optimized by MolProbity. The Clashes column lists the number of clashes within the asymmetric unit, whereas Symm-Clashes lists symmetry-related clashes.

Mol	Chain	Non-H	H(model)	H(added)	Clashes	Symm-Clashes
1	A	6693	0	6653	239	3
1	B	6693	0	6653	289	3
1	C	6693	0	6653	273	0
1	D	6693	0	6653	342	6
2	A	5	0	0	0	0
2	B	5	0	0	0	0
2	C	5	0	0	0	0
2	D	5	0	0	1	0
3	A	19	0	7	2	0
3	B	19	0	7	2	0
3	C	19	0	6	1	0
3	D	19	0	6	0	0
4	A	23	0	11	2	0
4	B	23	0	11	4	0
4	C	23	0	11	1	0
4	D	23	0	11	2	0
All	All	26960	0	26682	1123	6

The all-atom clashscore is defined as the number of clashes found per 1000 atoms (including hydrogen atoms). The all-atom clashscore for this structure is 21.

The worst 5 of 1123 close contacts within the same asymmetric unit are listed below, sorted by their clash magnitude.

Atom-1	Atom-2	Interatomic distance (Å)	Clash overlap (Å)
1:B:68:ILE:CB	1:B:68:ILE:CG1	1.81	1.57
1:B:69:ARG:CG	1:B:69:ARG:CB	1.84	1.54
1:B:73:HIS:CD2	1:B:834:LEU:HD21	1.61	1.30
1:B:69:ARG:CG	1:B:69:ARG:CA	2.33	1.06
1:B:73:HIS:CD2	1:B:834:LEU:CD2	2.32	1.01

The worst 5 of 6 symmetry-related close contacts are listed below. The label for Atom-2 includes the symmetry operator and encoded unit-cell translations to be applied.

Atom-1	Atom-2	Interatomic distance (Å)	Clash overlap (Å)
1:A:510:GLU:N	1:D:323:ARG:NH2[2_646]	1.85	0.35
1:B:595:ASN:O	1:D:22:GLU:O[2_746]	1.87	0.33
1:A:25:THR:OG1	1:D:822:ARG:O[2_646]	1.98	0.22
1:B:595:ASN:OD1	1:D:21:VAL:N[2_746]	2.04	0.16
1:B:595:ASN:OD1	1:D:20:GLY:C[2_746]	2.10	0.10

5.3 Torsion angles [i](#)

5.3.1 Protein backbone [i](#)

In the following table, the Percentiles column shows the percent Ramachandran outliers of the chain as a percentile score with respect to all X-ray entries followed by that with respect to entries of similar resolution.

The Analysed column shows the number of residues for which the backbone conformation was analysed, and the total number of residues.

Mol	Chain	Analysed	Favoured	Allowed	Outliers	Percentiles
1	A	820/828 (99%)	676 (82%)	104 (13%)	40 (5%)	2 7
1	B	820/828 (99%)	699 (85%)	83 (10%)	38 (5%)	2 7
1	C	820/828 (99%)	680 (83%)	107 (13%)	33 (4%)	3 9
1	D	820/828 (99%)	665 (81%)	117 (14%)	38 (5%)	2 7
All	All	3280/3312 (99%)	2720 (83%)	411 (12%)	149 (4%)	2 8

5 of 149 Ramachandran outliers are listed below:

Mol	Chain	Res	Type
1	A	93	ARG
1	A	151	GLY
1	A	233	TYR
1	A	236	ASN
1	A	321	PRO

5.3.2 Protein sidechains [i](#)

In the following table, the Percentiles column shows the percent sidechain outliers of the chain as a percentile score with respect to all X-ray entries followed by that with respect to entries of similar resolution.

The Analysed column shows the number of residues for which the sidechain conformation was analysed, and the total number of residues.

Mol	Chain	Analysed	Rotameric	Outliers	Percentiles	
1	A	712/717 (99%)	589 (83%)	123 (17%)	2	6
1	B	712/717 (99%)	578 (81%)	134 (19%)	1	5
1	C	712/717 (99%)	591 (83%)	121 (17%)	2	6
1	D	712/717 (99%)	572 (80%)	140 (20%)	1	4
All	All	2848/2868 (99%)	2330 (82%)	518 (18%)	1	5

5 of 518 residues with a non-rotameric sidechain are listed below:

Mol	Chain	Res	Type
1	D	522	LEU
1	D	571	HIS
1	D	521	LEU
1	B	441	MET
1	B	391	LEU

Sometimes sidechains can be flipped to improve hydrogen bonding and reduce clashes. 5 of 62 such sidechains are listed below:

Mol	Chain	Res	Type
1	B	576	GLN
1	D	453	ASN
1	C	167	ASN
1	D	377	HIS
1	D	665	GLN

5.3.3 RNA [i](#)

There are no RNA molecules in this entry.

5.4 Non-standard residues in protein, DNA, RNA chains [i](#)

There are no non-standard protein/DNA/RNA residues in this entry.

5.5 Carbohydrates [i](#)

There are no monosaccharides in this entry.

5.6 Ligand geometry [i](#)

12 ligands are modelled in this entry.

In the following table, the Counts columns list the number of bonds (or angles) for which Mogul statistics could be retrieved, the number of bonds (or angles) that are observed in the model and the number of bonds (or angles) that are defined in the Chemical Component Dictionary. The Link column lists molecule types, if any, to which the group is linked. The Z score for a bond length (or angle) is the number of standard deviations the observed value is removed from the expected value. A bond length (or angle) with $|Z| > 2$ is considered an outlier worth inspection. RMSZ is the root-mean-square of all Z scores of the bond lengths (or angles).

Mol	Type	Chain	Res	Link	Bond lengths			Bond angles		
					Counts	RMSZ	# Z > 2	Counts	RMSZ	# Z > 2
4	IMP	D	920	-	21,25,25	1.85	6 (28%)	24,38,38	1.34	3 (12%)
3	PDP	B	932	1	17,19,20	1.82	3 (17%)	24,29,30	1.54	5 (20%)
2	SO4	B	900	-	4,4,4	0.24	0	6,6,6	0.54	0
2	SO4	C	900	-	4,4,4	0.15	0	6,6,6	0.54	0
3	PDP	C	933	1	17,19,20	1.23	2 (11%)	24,29,30	1.19	3 (12%)
4	IMP	C	920	-	21,25,25	2.05	9 (42%)	24,38,38	1.53	7 (29%)
3	PDP	D	934	1	17,19,20	1.73	3 (17%)	24,29,30	1.21	3 (12%)
4	IMP	B	920	-	21,25,25	2.15	7 (33%)	24,38,38	1.66	7 (29%)
2	SO4	D	900	-	4,4,4	0.08	0	6,6,6	0.40	0
4	IMP	A	920	-	21,25,25	2.21	9 (42%)	24,38,38	1.46	5 (20%)
3	PDP	A	931	1	17,19,20	1.25	1 (5%)	24,29,30	1.28	4 (16%)
2	SO4	A	900	-	4,4,4	0.25	0	6,6,6	0.45	0

In the following table, the Chirals column lists the number of chiral outliers, the number of chiral centers analysed, the number of these observed in the model and the number defined in the Chemical Component Dictionary. Similar counts are reported in the Torsion and Rings columns.

'-' means no outliers of that kind were identified.

Mol	Type	Chain	Res	Link	Chirals	Torsions	Rings
4	IMP	D	920	-	-	1/6/26/26	0/3/3/3
3	PDP	B	932	1	-	4/12/12/14	0/1/1/1
3	PDP	C	933	1	-	5/12/12/14	0/1/1/1
4	IMP	C	920	-	-	0/6/26/26	0/3/3/3
3	PDP	D	934	1	-	5/12/12/14	0/1/1/1
4	IMP	B	920	-	-	1/6/26/26	0/3/3/3
4	IMP	A	920	-	-	0/6/26/26	0/3/3/3
3	PDP	A	931	1	-	5/12/12/14	0/1/1/1

The worst 5 of 40 bond length outliers are listed below:

Mol	Chain	Res	Type	Atoms	Z	Observed(Å)	Ideal(Å)
3	D	934	PDP	C3-C2	-5.17	1.35	1.40
4	B	920	IMP	C5-C6	-4.98	1.37	1.47
3	B	932	PDP	C3-C2	-4.77	1.36	1.40
4	D	920	IMP	C5-C6	-4.46	1.38	1.47
4	A	920	IMP	O6-C6	4.32	1.32	1.23

The worst 5 of 37 bond angle outliers are listed below:

Mol	Chain	Res	Type	Atoms	Z	Observed(°)	Ideal(°)
4	B	920	IMP	O5'-C5'-C4'	3.80	122.06	108.99
4	A	920	IMP	P-O5'-C5'	3.70	128.50	118.30
3	B	932	PDP	PA-O3A-PB	-3.70	120.14	132.83
3	B	932	PDP	O5A-C5A-C5	3.23	115.51	109.35
4	C	920	IMP	O3P-P-O5'	-3.07	98.57	106.73

There are no chirality outliers.

5 of 21 torsion outliers are listed below:

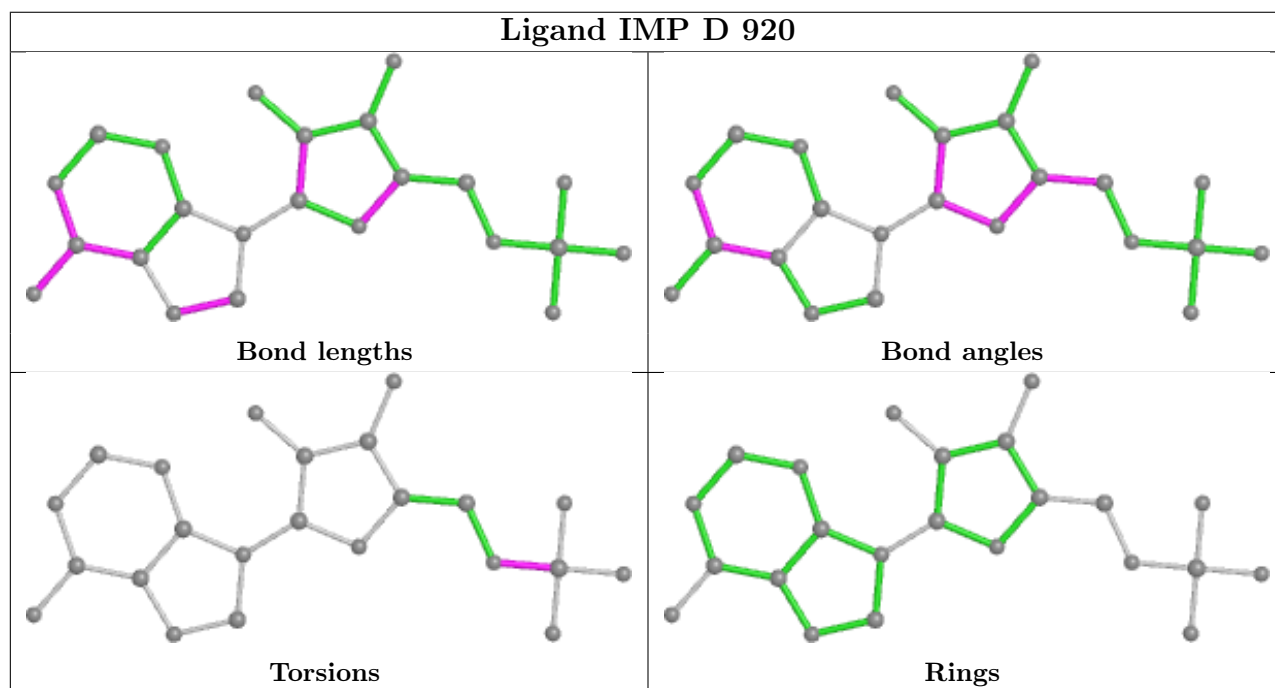
Mol	Chain	Res	Type	Atoms
3	A	931	PDP	C5A-O5A-PA-O1A
3	A	931	PDP	C5A-O5A-PA-O2A
3	B	932	PDP	C5A-O5A-PA-O3A
3	C	933	PDP	C5A-O5A-PA-O2A
3	D	934	PDP	C5A-O5A-PA-O1A

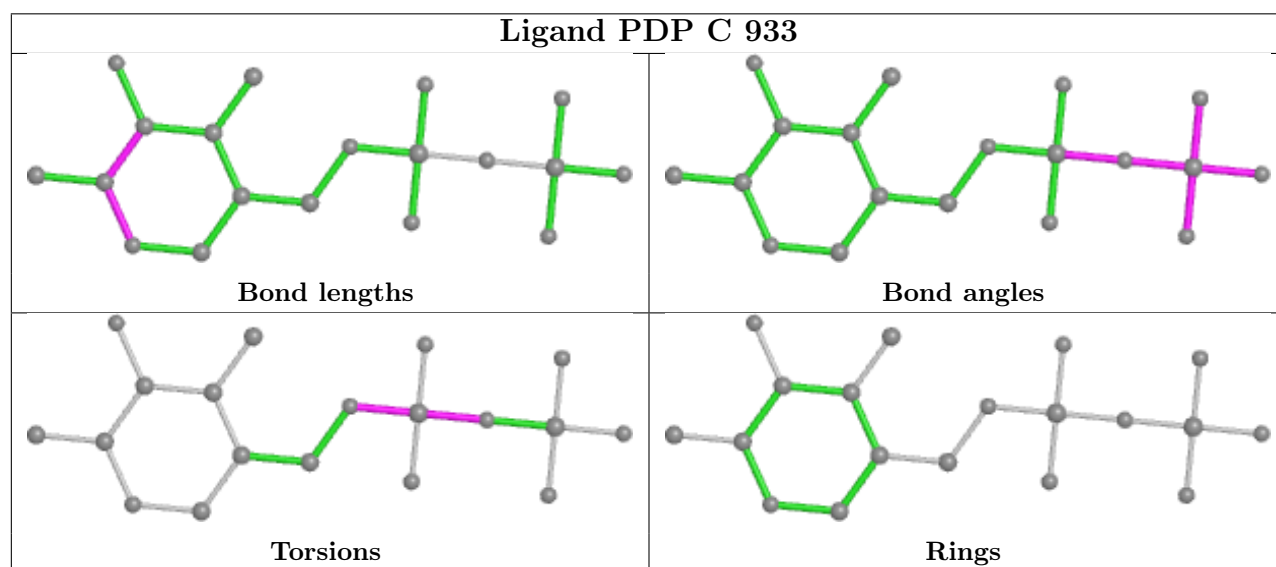
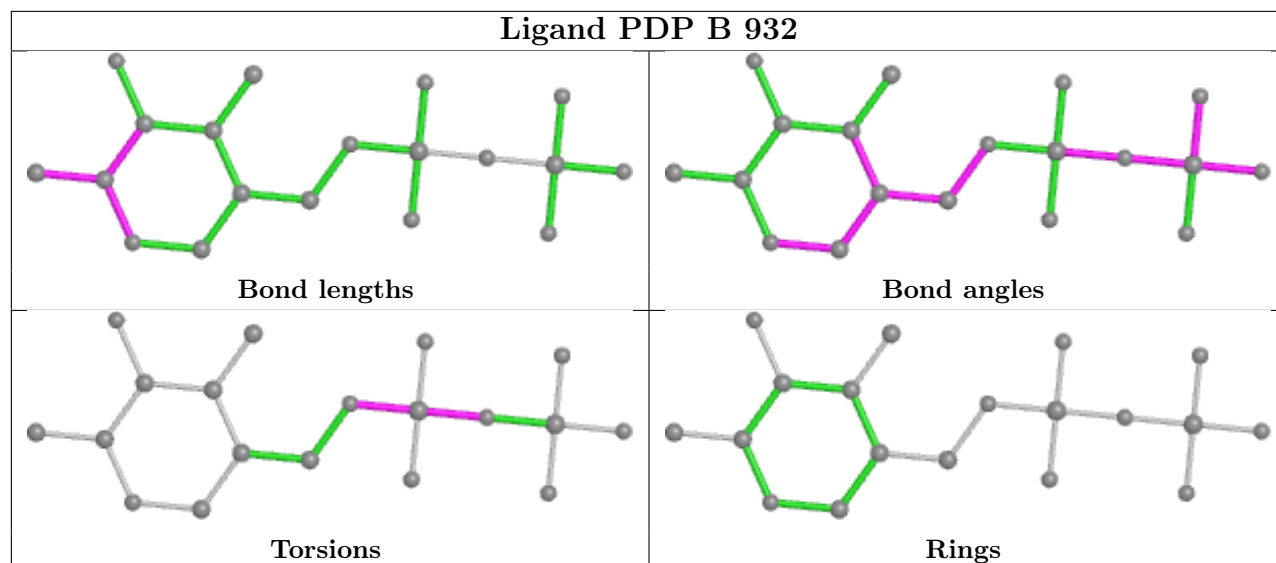
There are no ring outliers.

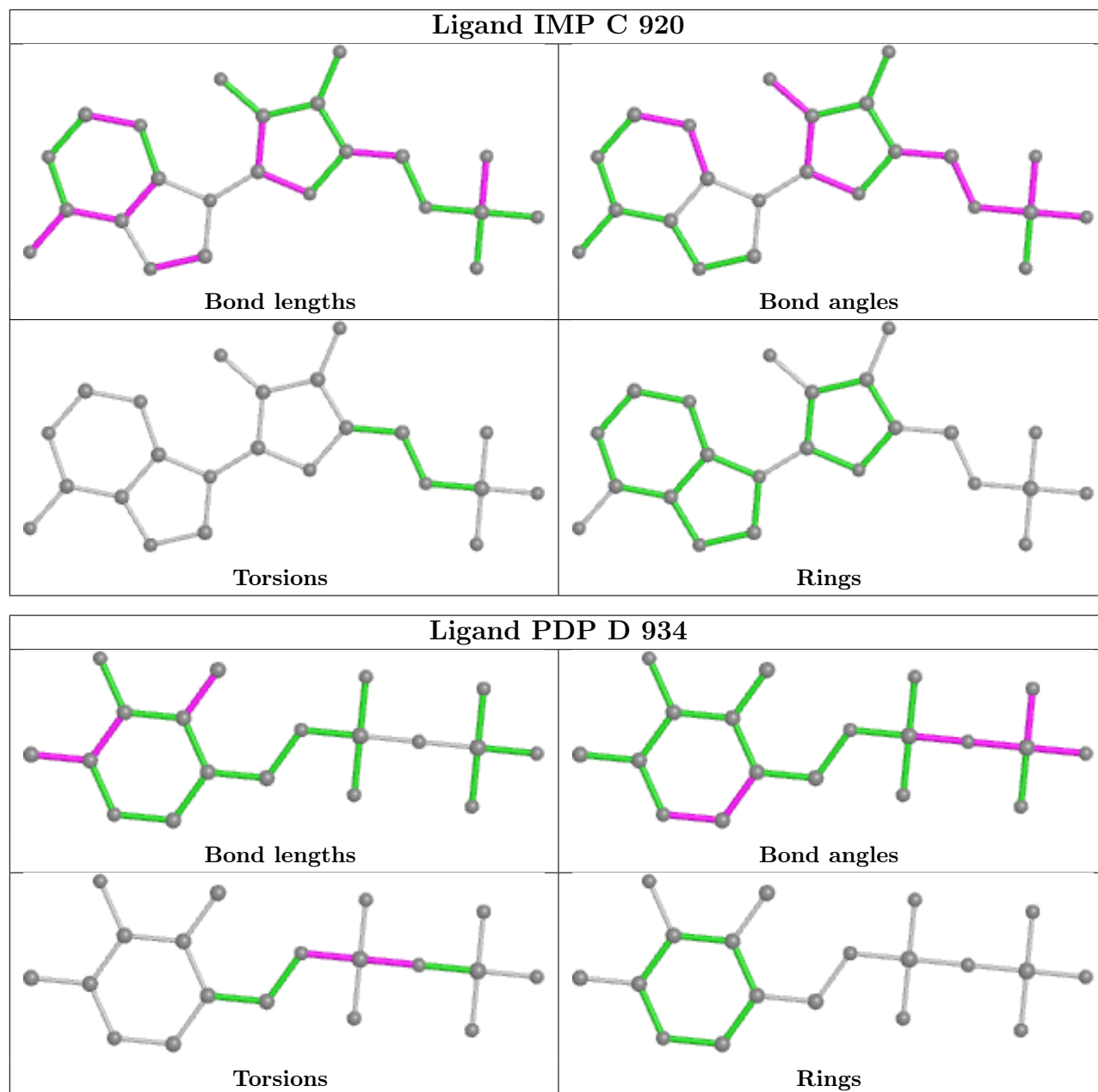
8 monomers are involved in 15 short contacts:

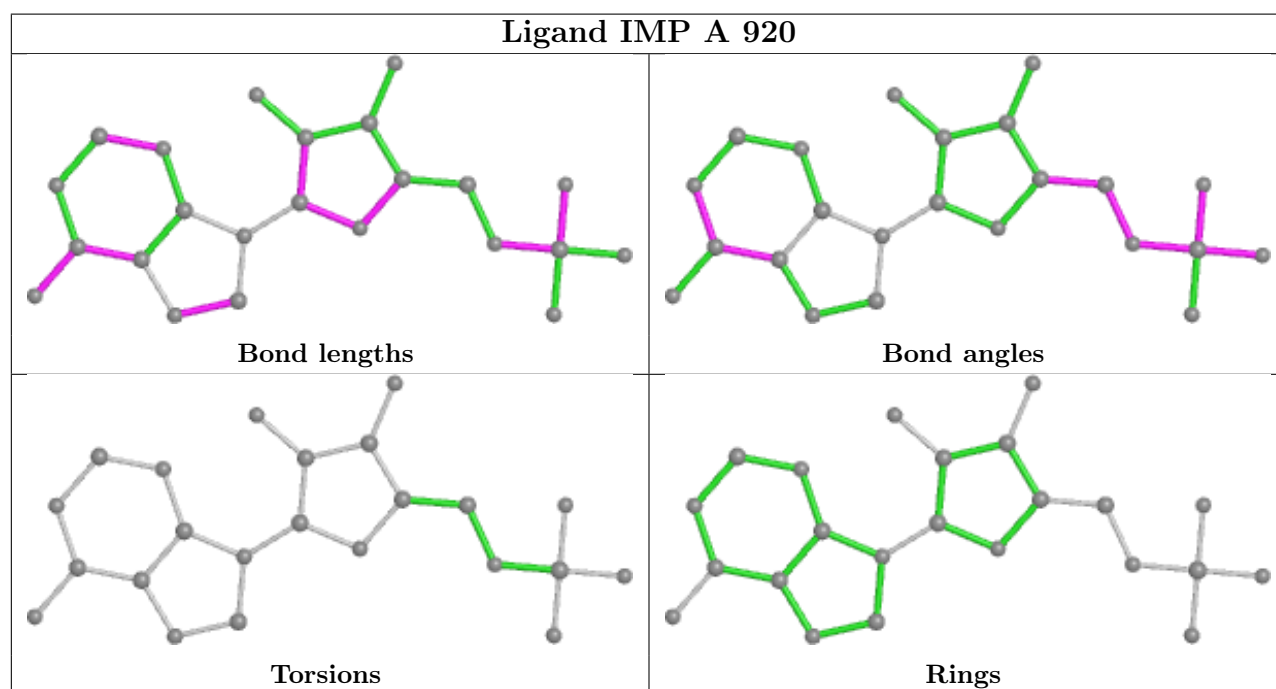
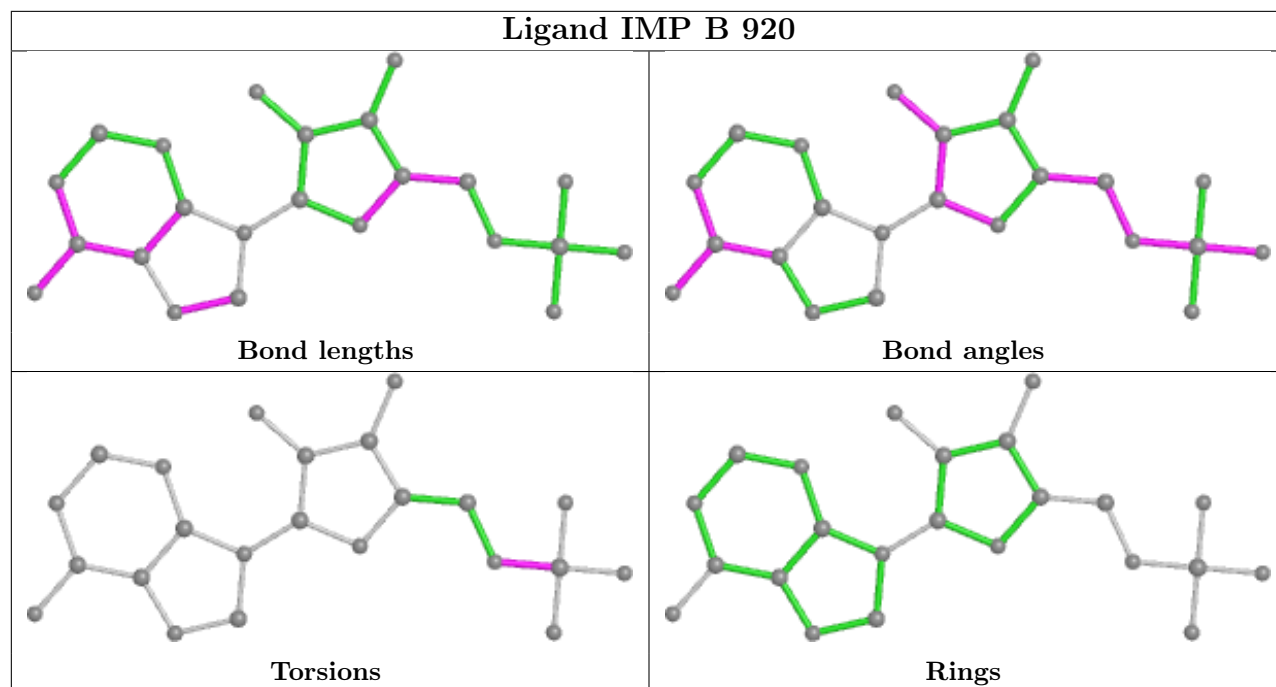
Mol	Chain	Res	Type	Clashes	Symm-Clashes
4	D	920	IMP	2	0
3	B	932	PDP	2	0
3	C	933	PDP	1	0
4	C	920	IMP	1	0
4	B	920	IMP	4	0
2	D	900	SO4	1	0
4	A	920	IMP	2	0
3	A	931	PDP	2	0

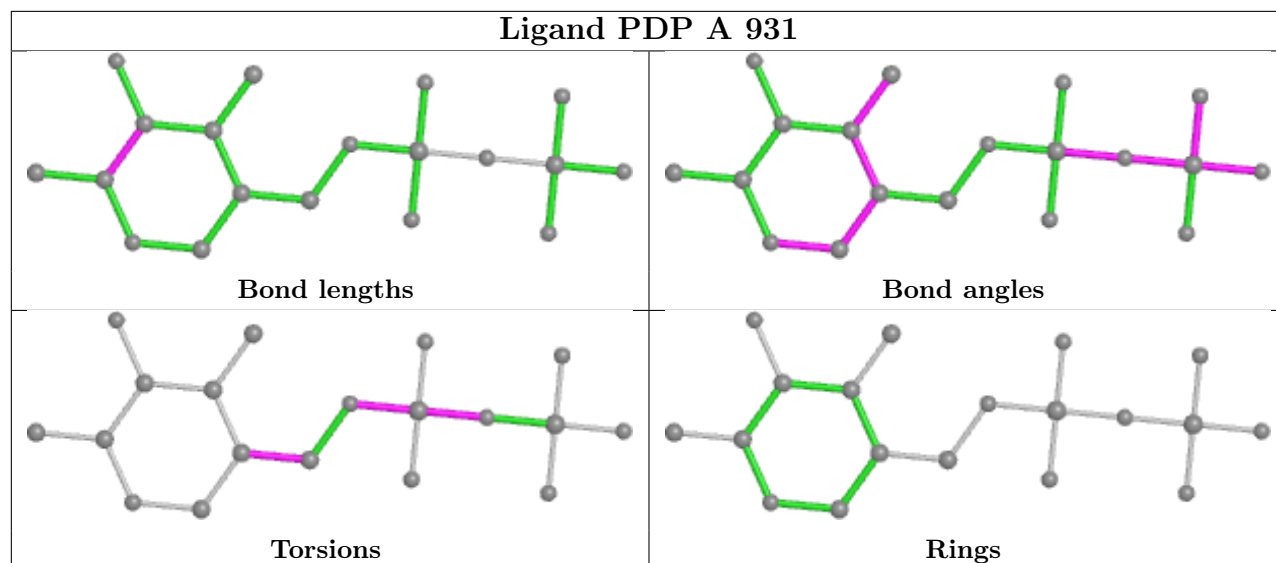
The following is a two-dimensional graphical depiction of Mogul quality analysis of bond lengths, bond angles, torsion angles, and ring geometry for all instances of the Ligand of Interest. In addition, ligands with molecular weight > 250 and outliers as shown on the validation Tables will also be included. For torsion angles, if less than 5% of the Mogul distribution of torsion angles is within 10 degrees of the torsion angle in question, then that torsion angle is considered an outlier. Any bond that is central to one or more torsion angles identified as an outlier by Mogul will be highlighted in the graph. For rings, the root-mean-square deviation (RMSD) between the ring in question and similar rings identified by Mogul is calculated over all ring torsion angles. If the average RMSD is greater than 60 degrees and the minimal RMSD between the ring in question and any Mogul-identified rings is also greater than 60 degrees, then that ring is considered an outlier. The outliers are highlighted in purple. The color gray indicates Mogul did not find sufficient equivalents in the CSD to analyse the geometry.











5.7 Other polymers [i](#)

There are no such residues in this entry.

5.8 Polymer linkage issues [i](#)

There are no chain breaks in this entry.

6 Fit of model and data

6.1 Protein, DNA and RNA chains

EDS was not executed - this section is therefore empty.

6.2 Non-standard residues in protein, DNA, RNA chains

EDS was not executed - this section is therefore empty.

6.3 Carbohydrates

EDS was not executed - this section is therefore empty.

6.4 Ligands

EDS was not executed - this section is therefore empty.

6.5 Other polymers

EDS was not executed - this section is therefore empty.