



wwPDB NMR Structure Validation Summary Report ⓘ

May 7, 2024 – 12:26 pm BST

PDB ID : 4A4F
BMRB ID : 18006
Title : Solution structure of SPF30 Tudor domain in complex with symmetrically dimethylated arginine
Authors : Tripsianes, K.; Madl, T.; Machyna, M.; Fessas, D.; Englbrecht, C.; Fischer, U.; Neugebauer, K.M.; Sattler, M.
Deposited on : 2011-10-12

This is a wwPDB NMR Structure Validation Summary Report for a publicly released PDB entry.

We welcome your comments at validation@mail.wwpdb.org

A user guide is available at

<https://www.wwpdb.org/validation/2017/NMRValidationReportHelp>

with specific help available everywhere you see the ⓘ symbol.

The types of validation reports are described at

<http://www.wwpdb.org/validation/2017/FAQs#types>.

The following versions of software and data (see [references ⓘ](#)) were used in the production of this report:

MolProbity : 4.02b-467
Mogul : 1.8.4, CSD as541be (2020)
Percentile statistics : 20191225.v01 (using entries in the PDB archive December 25th 2019)
wwPDB-RCI : v_1n_11_5_13_A (Berjanski et al., 2005)
PANAV : Wang et al. (2010)
wwPDB-ShiftChecker : v1.2
Ideal geometry (proteins) : Engh & Huber (2001)
Ideal geometry (DNA, RNA) : Parkinson et al. (1996)
Validation Pipeline (wwPDB-VP) : 2.36.2

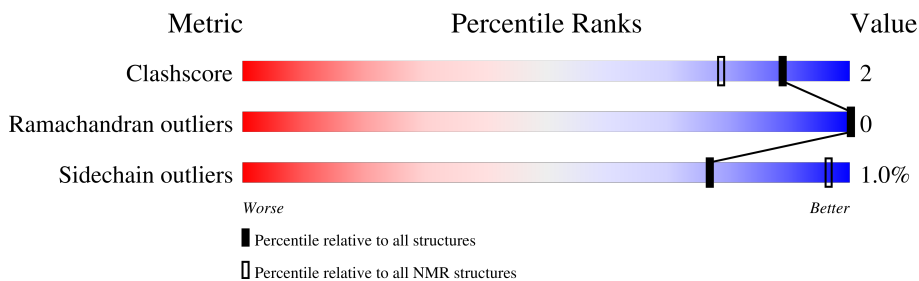
1 Overall quality at a glance

The following experimental techniques were used to determine the structure:

SOLUTION NMR

The overall completeness of chemical shifts assignment is 88%.

Percentile scores (ranging between 0-100) for global validation metrics of the entry are shown in the following graphic. The table shows the number of entries on which the scores are based.



Metric	Whole archive (#Entries)	NMR archive (#Entries)
Clashscore	158937	12864
Ramachandran outliers	154571	11451
Sidechain outliers	154315	11428

The table below summarises the geometric issues observed across the polymeric chains and their fit to the experimental data. The red, orange, yellow and green segments indicate the fraction of residues that contain outliers for ≥ 3 , 2, 1 and 0 types of geometric quality criteria. A cyan segment indicates the fraction of residues that are not part of the well-defined cores, and a grey segment represents the fraction of residues that are not modelled. The numeric value for each fraction is indicated below the corresponding segment, with a dot representing fractions $\leq 5\%$

Mol	Chain	Length	Quality of chain
1	A	64	

2 Ensemble composition and analysis

This entry contains 20 models. Model 13 is the overall representative, medoid model (most similar to other models). The authors have identified model 1 as representative.

The following residues are included in the computation of the global validation metrics.

Well-defined (core) protein residues			
Well-defined core	Residue range (total)	Backbone RMSD (Å)	Medoid model
1	A:73-A:124 (52)	0.21	13

Ill-defined regions of proteins are excluded from the global statistics.

Ligands and non-protein polymers are included in the analysis.

The models can be grouped into 5 clusters. No single-model clusters were found.

Cluster number	Models
1	10, 11, 13, 14, 15, 16, 17, 18
2	3, 4, 5, 6, 9, 19
3	2, 12
4	8, 20
5	1, 7

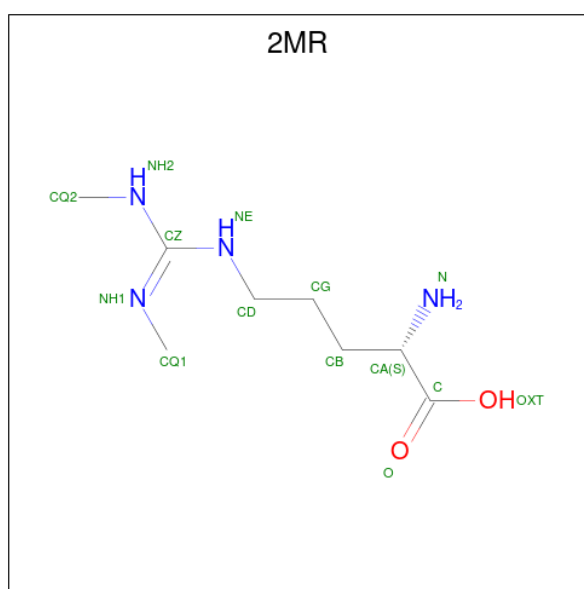
3 Entry composition [i](#)

There are 2 unique types of molecules in this entry. The entry contains 965 atoms, of which 465 are hydrogens and 0 are deuteriums.

- Molecule 1 is a protein called SURVIVAL OF MOTOR NEURON-RELATED-SPLICING FACTOR 30.

Mol	Chain	Residues	Atoms					Trace	
			Total	C	H	N	O		S
1	A	64	932	301	446	76	106	3	0

- Molecule 2 is N3, N4-DIMETHYLARGININE (three-letter code: 2MR) (formula: C₈H₁₈N₄O₂).



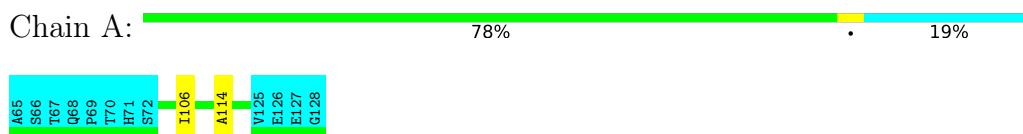
Mol	Chain	Residues	Atoms				
			Total	C	H	N	O
2	A	1	33	8	19	4	2

4 Residue-property plots [i](#)

4.1 Average score per residue in the NMR ensemble

These plots are provided for all protein, RNA, DNA and oligosaccharide chains in the entry. The first graphic is the same as shown in the summary in section 1 of this report. The second graphic shows the sequence where residues are colour-coded according to the number of geometric quality criteria for which they contain at least one outlier: green = 0, yellow = 1, orange = 2 and red = 3 or more. Stretches of 2 or more consecutive residues without any outliers are shown as green connectors. Residues which are classified as ill-defined in the NMR ensemble, are shown in cyan with an underline colour-coded according to the previous scheme. Residues which were present in the experimental sample, but not modelled in the final structure are shown in grey.

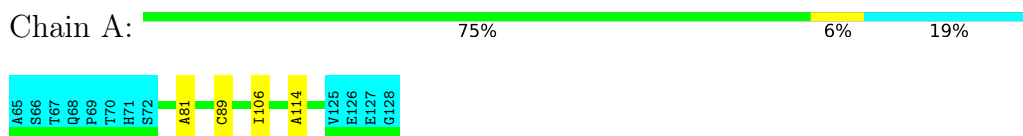
- Molecule 1: SURVIVAL OF MOTOR NEURON-RELATED-SPLICING FACTOR 30



4.2 Residue scores for the representative (medoid) model from the NMR ensemble

The representative model is number 13. Colouring as in section 4.1 above.

- Molecule 1: SURVIVAL OF MOTOR NEURON-RELATED-SPLICING FACTOR 30



5 Refinement protocol and experimental data overview

The models were refined using the following method: *simulated annealing*.

Of the 200 calculated structures, 20 were deposited, based on the following criterion: *LOWEST ENERGY*.

The following table shows the software used for structure solution, optimisation and refinement.

Software name	Classification	Version
CNS	refinement	
TALOS	structure solution	
CYANA	structure solution	
CNS	structure solution	

The following table shows chemical shift validation statistics as aggregates over all chemical shift files. Detailed validation can be found in section 7 of this report.

Chemical shift file(s)	working_cs.cif
Number of chemical shift lists	1
Total number of shifts	710
Number of shifts mapped to atoms	693
Number of unparsed shifts	0
Number of shifts with mapping errors	17
Number of shifts with mapping warnings	0
Assignment completeness (well-defined parts)	88%

6 Model quality [i](#)

6.1 Standard geometry [i](#)

Bond lengths and bond angles in the following residue types are not validated in this section:
2MR

There are no covalent bond-length or bond-angle outliers.

There are no bond-length outliers.

There are no bond-angle outliers.

There are no chirality outliers.

There are no planarity outliers.

6.2 Too-close contacts [i](#)

In the following table, the Non-H and H(model) columns list the number of non-hydrogen atoms and hydrogen atoms in each chain respectively. The H(added) column lists the number of hydrogen atoms added and optimized by MolProbity. The Clashes column lists the number of clashes averaged over the ensemble.

Mol	Chain	Non-H	H(model)	H(added)	Clashes
1	A	399	369	369	1±1
All	All	8260	7760	7720	28

The all-atom clashscore is defined as the number of clashes found per 1000 atoms (including hydrogen atoms). The all-atom clashscore for this structure is 2.

5 of 6 unique clashes are listed below, sorted by their clash magnitude.

Atom-1	Atom-2	Clash(Å)	Distance(Å)	Models	
				Worst	Total
1:A:106:ILE:O	1:A:114:ALA:HA	0.48	2.07	2	14
1:A:79:CYS:SG	1:A:122:LEU:HD22	0.47	2.50	1	7
1:A:80:MET:O	1:A:122:LEU:HA	0.46	2.10	4	1
1:A:81:ALA:O	1:A:89:CYS:HA	0.41	2.16	13	4
1:A:102:GLY:O	1:A:119:LEU:HG	0.41	2.16	18	1

6.3 Torsion angles [i](#)

6.3.1 Protein backbone [i](#)

In the following table, the Percentiles column shows the percent Ramachandran outliers of the chain as a percentile score with respect to all PDB entries followed by that with respect to all NMR entries. The Analysed column shows the number of residues for which the backbone conformation was analysed and the total number of residues.

Mol	Chain	Analysed	Favoured	Allowed	Outliers	Percentiles	
1	A	52/64 (81%)	52±0 (100±1%)	0±0 (0±1%)	0±0 (0±0%)	100	100
All	All	1040/1280 (81%)	1035 (100%)	5 (0%)	0 (0%)	100	100

There are no Ramachandran outliers.

6.3.2 Protein sidechains [i](#)

In the following table, the Percentiles column shows the percent sidechain outliers of the chain as a percentile score with respect to all PDB entries followed by that with respect to all NMR entries. The Analysed column shows the number of residues for which the sidechain conformation was analysed and the total number of residues.

Mol	Chain	Analysed	Rotameric	Outliers	Percentiles	
1	A	41/51 (80%)	41±1 (99±2%)	0±1 (1±2%)	77	96
All	All	820/1020 (80%)	812 (99%)	8 (1%)	77	96

All 3 unique residues with a non-rotameric sidechain are listed below. They are sorted by the frequency of occurrence in the ensemble.

Mol	Chain	Res	Type	Models (Total)
1	A	77	ASP	4
1	A	78	LYS	2
1	A	100	GLU	2

6.3.3 RNA [i](#)

There are no RNA molecules in this entry.

6.4 Non-standard residues in protein, DNA, RNA chains [i](#)

There are no non-standard protein/DNA/RNA residues in this entry.

6.5 Carbohydrates [i](#)

There are no monosaccharides in this entry.

6.6 Ligand geometry [i](#)

1 ligand is modelled in this entry.

In the following table, the Counts columns list the number of bonds for which Mogul statistics could be retrieved, the number of bonds that are observed in the model and the number of bonds that are defined in the chemical component dictionary. The Link column lists molecule types, if any, to which the group is linked. The Z score for a bond length is the number of standard deviations the observed value is removed from the expected value. A bond length with $|Z| > 2$ is considered an outlier worth inspection. RMSZ is the average root-mean-square of all Z scores of the bond lengths.

Mol	Type	Chain	Res	Link	Bond lengths		
					Counts	RMSZ	#Z>2
2	2MR	A	201	-	11,13,13	0.95±0.06	1±0 (5±4%)

In the following table, the Counts columns list the number of angles for which Mogul statistics could be retrieved, the number of angles that are observed in the model and the number of angles that are defined in the chemical component dictionary. The Link column lists molecule types, if any, to which the group is linked. The Z score for a bond angle is the number of standard deviations the observed value is removed from the expected value. A bond angle with $|Z| > 2$ is considered an outlier worth inspection. RMSZ is the average root-mean-square of all Z scores of the bond angles.

Mol	Type	Chain	Res	Link	Bond angles		
					Counts	RMSZ	#Z>2
2	2MR	A	201	-	11,15,15	1.38±0.05	2±0 (17±2%)

In the following table, the Chirals column lists the number of chiral outliers, the number of chiral centers analysed, the number of these observed in the model and the number defined in the chemical component dictionary. Similar counts are reported in the Torsion and Rings columns. '-' means no outliers of that kind were identified.

Mol	Type	Chain	Res	Link	Chirals	Torsions	Rings
2	2MR	A	201	-	-	0±0,13,15,15	-

All unique bond outliers are listed below. They are sorted according to the Z-score of the worst occurrence in the ensemble.

Mol	Chain	Res	Type	Atoms	Z	Observed(Å)	Ideal(Å)	Models	
								Worst	Total
2	A	201	2MR	OXT-C	2.42	1.22	1.30	6	11
2	A	201	2MR	CZ-NE	2.27	1.29	1.34	8	1

All unique angle outliers are listed below. They are sorted according to the Z-score of the worst occurrence in the ensemble.

Mol	Chain	Res	Type	Atoms	Z	Observed(°)	Ideal(°)	Models	
								Worst	Total
2	A	201	2MR	CQ2-NH2-CZ	3.46	131.52	123.86	16	20
2	A	201	2MR	NE-CZ-NH2	2.65	117.05	119.48	14	18

There are no chirality outliers.

There are no torsion outliers.

There are no ring outliers.

6.7 Other polymers [i](#)

There are no such molecules in this entry.

6.8 Polymer linkage issues [i](#)

There are no chain breaks in this entry.

7 Chemical shift validation i

The completeness of assignment taking into account all chemical shift lists is 88% for the well-defined parts and 88% for the entire structure.

7.1 Chemical shift list 1

File name: working_cs.cif

Chemical shift list name: *assigned_chem_shift_list*

7.1.1 Bookkeeping i

The following table shows the results of parsing the chemical shift list and reports the number of nuclei with statistically unusual chemical shifts.

Total number of shifts	710
Number of shifts mapped to atoms	693
Number of unparsed shifts	0
Number of shifts with mapping errors	17
Number of shifts with mapping warnings	0
Number of shift outliers (ShiftChecker)	4

The following assigned chemical shifts were not mapped to the molecules present in the coordinate file.

- No matching atom found in the structure. First 5 (of 17) occurrences are reported below.

List ID	Chain	Res	Type	Atom	Shift Data		
					Value	Uncertainty	Ambiguity
1	A	65	ALA	H	8.454	0.020	1
1	A	1129	2MR	HA	3.727	0.007	1
1	A	1129	2MR	HB2	1.872	0.017	1
1	A	1129	2MR	HB3	1.872	0.017	1
1	A	1129	2MR	HG3	1.625	0.024	1
1	A	1129	2MR	HG2	1.625	0.024	1
1	A	1129	2MR	HD3	3.034	0.021	1
1	A	1129	2MR	HD2	3.034	0.021	1
1	A	1129	2MR	HE	6.505	0.021	1
1	A	1129	2MR	HH1	6.277	0.002	1
1	A	1129	2MR	HQ11	2.515	0.020	1
1	A	1129	2MR	HQ12	2.515	0.020	1
1	A	1129	2MR	HQ13	2.515	0.020	1
1	A	1129	2MR	HH2	6.281	0.020	1

Continued on next page...

Continued from previous page...

List ID	Chain	Res	Type	Atom	Shift Data		
					Value	Uncertainty	Ambiguity
1	A	1129	2MR	HQ21	2.515	0.020	1
1	A	1129	2MR	HQ22	2.515	0.020	1
1	A	1129	2MR	HQ23	2.515	0.020	1

7.1.2 Chemical shift referencing [i](#)

The following table shows the suggested chemical shift referencing corrections.

Nucleus	# values	Correction \pm precision, ppm	Suggested action
$^{13}\text{C}_\alpha$	63	0.17 ± 0.07	None needed (< 0.5 ppm)
$^{13}\text{C}_\beta$	57	-0.17 ± 0.22	None needed (< 0.5 ppm)
$^{13}\text{C}'$	0	—	None (insufficient data)
^{15}N	61	-0.18 ± 0.48	None needed (< 0.5 ppm)

7.1.3 Completeness of resonance assignments [i](#)

The following table shows the completeness of the chemical shift assignments for the well-defined regions of the structure. The overall completeness is 88%, i.e. 577 atoms were assigned a chemical shift out of a possible 653. 0 out of 6 assigned methyl groups (LEU and VAL) were assigned stereospecifically.

	Total	^1H	^{13}C	^{15}N
Backbone	208/261 (80%)	107/107 (100%)	51/104 (49%)	50/50 (100%)
Sidechain	319/340 (94%)	218/220 (99%)	97/113 (86%)	4/7 (57%)
Aromatic	50/52 (96%)	25/25 (100%)	23/25 (92%)	2/2 (100%)
Overall	577/653 (88%)	350/352 (99%)	171/242 (71%)	56/59 (95%)

7.1.4 Statistically unusual chemical shifts [i](#)

The following table lists the statistically unusual chemical shifts. These are statistical measures, and large deviations from the mean do not necessarily imply incorrect assignments. Molecules containing paramagnetic centres or hemes are expected to give rise to anomalous chemical shifts.

List Id	Chain	Res	Type	Atom	Shift, ppm	Expected range, ppm	Z-score
1	A	85	GLU	HB2	-0.25	1.00 – 3.05	-11.1
1	A	85	GLU	HB3	0.07	0.95 – 3.05	-9.2
1	A	85	GLU	H	5.07	5.45 – 11.20	-5.7
1	A	113	ASN	HD22	4.47	4.69 – 9.61	-5.4

7.1.5 Random Coil Index (RCI) plots [i](#)

The image below reports *random coil index* values for the protein chains in the structure. The height of each bar gives a probability of a given residue to be disordered, as predicted from the available chemical shifts and the amino acid sequence. A value above 0.2 is an indication of significant predicted disorder. The colour of the bar shows whether the residue is in the well-defined core (black) or in the ill-defined residue ranges (cyan), as described in section 2 on ensemble composition. If well-defined core and ill-defined regions are not identified then it is shown as gray bars.

Random coil index (RCI) for chain A:

