



Full wwPDB EM Validation Report ⓘ

Mar 31, 2021 – 09:56 am BST

EMDB ID : EMD-1510
Title : Structure of full-length Epac2 in complex with cyclic-AMP and Rap.
Authors : Arias-Palomo, E.; Rehmann, H.; Hadders, M.; Schwede, F.; Bos, J.L.; Llorca, O.
Deposited on : 2008-04-25
Resolution : 23.00 Å(reported)

This is a Full wwPDB EM Validation Report for a publicly released PDB entry.

We welcome your comments at validation@mail.wwpdb.org

A user guide is available at

<https://www.wwpdb.org/validation/2017/EMMapValidationReportHelp>

with specific help available everywhere you see the ⓘ symbol.

The following versions of software and data (see [references ⓘ](#)) were used in the production of this report:

EMDB validation analysis : 0.0.0.dev75
Validation Pipeline (wwPDB-VP) : 2.18

1 Experimental information

Property	Value	Source
EM reconstruction method	SINGLE PARTICLE	Depositor
Imposed symmetry	Not Provided	
Number of particles used	3442	Depositor
Resolution determination method	FSC 0.5 CUT-OFF	Depositor
CTF correction method	Phase correction at the micrograph level	Depositor
Microscope	JEOL 1230	Depositor
Voltage (kV)	100	Depositor
Electron dose ($e^-/\text{\AA}^2$)	Not provided	
Minimum defocus (nm)	Not provided	
Maximum defocus (nm)	Not provided	
Magnification	50000.0	Depositor
Image detector	KODAK SO-163 FILM	Depositor
Maximum map value	0.166	Depositor
Minimum map value	-0.039	Depositor
Average map value	0.002	Depositor
Map value standard deviation	0.013	Depositor
Recommended contour level	0.0144	Depositor
Map size (Å)	201.6, 201.6, 201.6	wwPDB
Map dimensions	48, 48, 48	wwPDB
Map angles (°)	90, 90, 90	wwPDB
Pixel spacing (Å)	4.2, 4.2, 4.2	Depositor

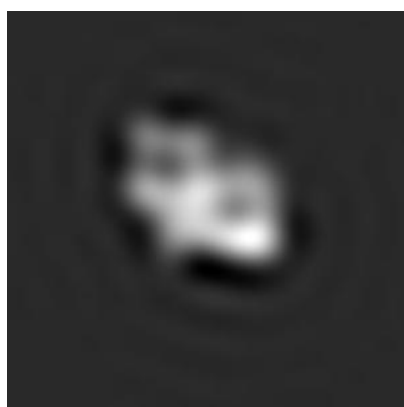
2 Map visualisation [i](#)

This section contains visualisations of the EMDB entry EMD-1510. These allow visual inspection of the internal detail of the map and identification of artifacts.

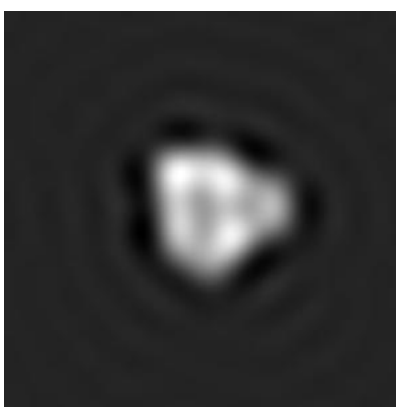
No raw map or half-maps were deposited for this entry and therefore no images, graphs, etc. pertaining to the raw map can be shown.

2.1 Orthogonal projections [i](#)

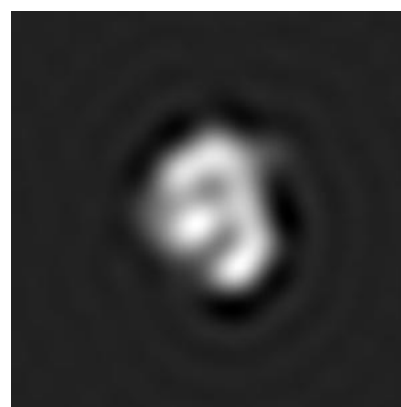
2.1.1 Primary map



X



Y

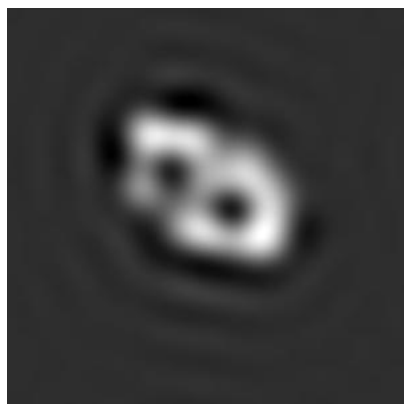


Z

The images above show the map projected in three orthogonal directions.

2.2 Central slices [i](#)

2.2.1 Primary map



X Index: 24



Y Index: 24



Z Index: 24

The images above show central slices of the map in three orthogonal directions.

2.3 Largest variance slices [i](#)

2.3.1 Primary map



X Index: 27



Y Index: 22



Z Index: 21

The images above show the largest variance slices of the map in three orthogonal directions.

2.4 Orthogonal surface views [i](#)

2.4.1 Primary map



X



Y



Z

The images above show the 3D surface view of the map at the recommended contour level 0.0144. These images, in conjunction with the slice images, may facilitate assessment of whether an appropriate contour level has been provided.

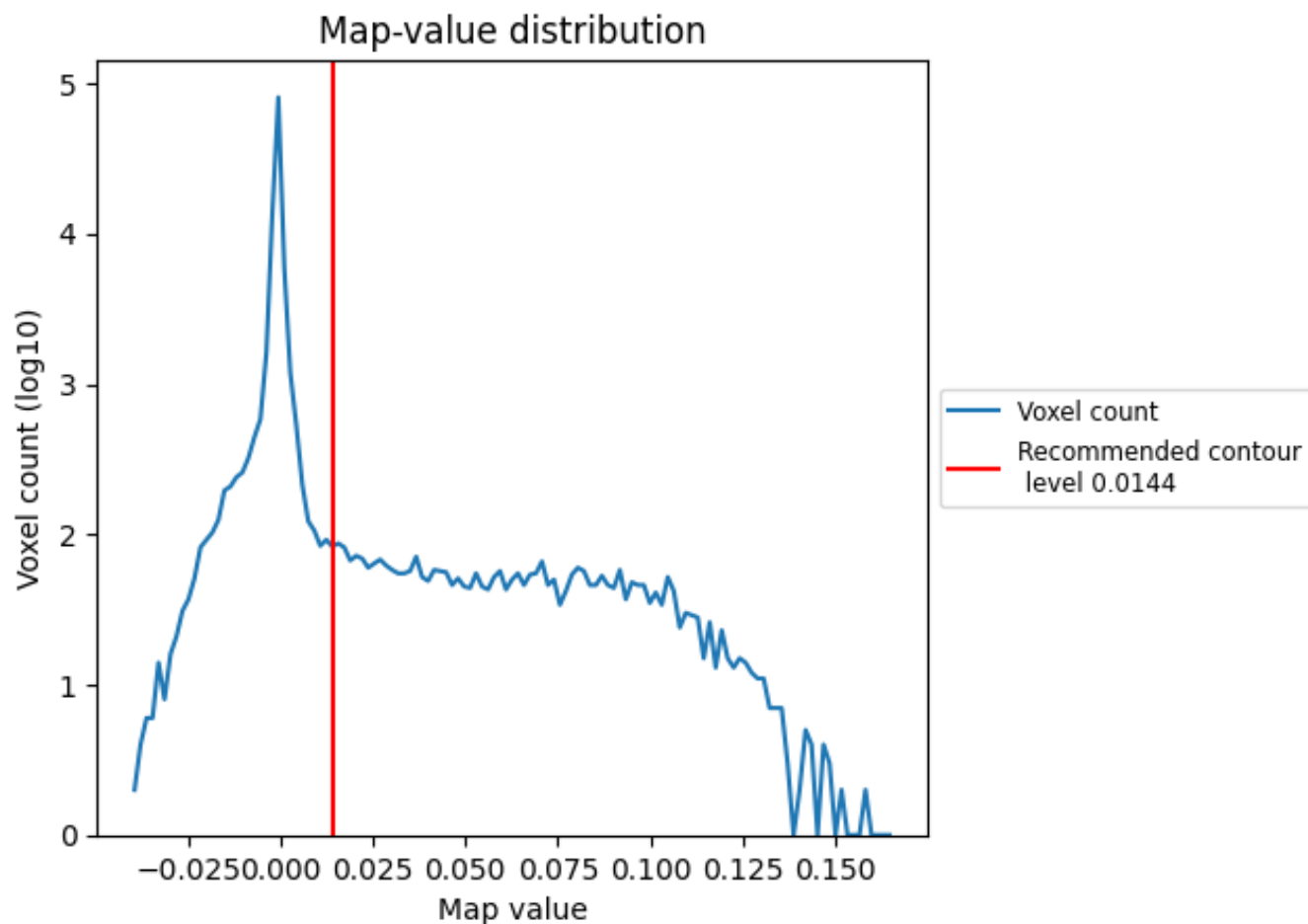
2.5 Mask visualisation

This section was not generated. No masks/segmentation were deposited.

3 Map analysis [i](#)

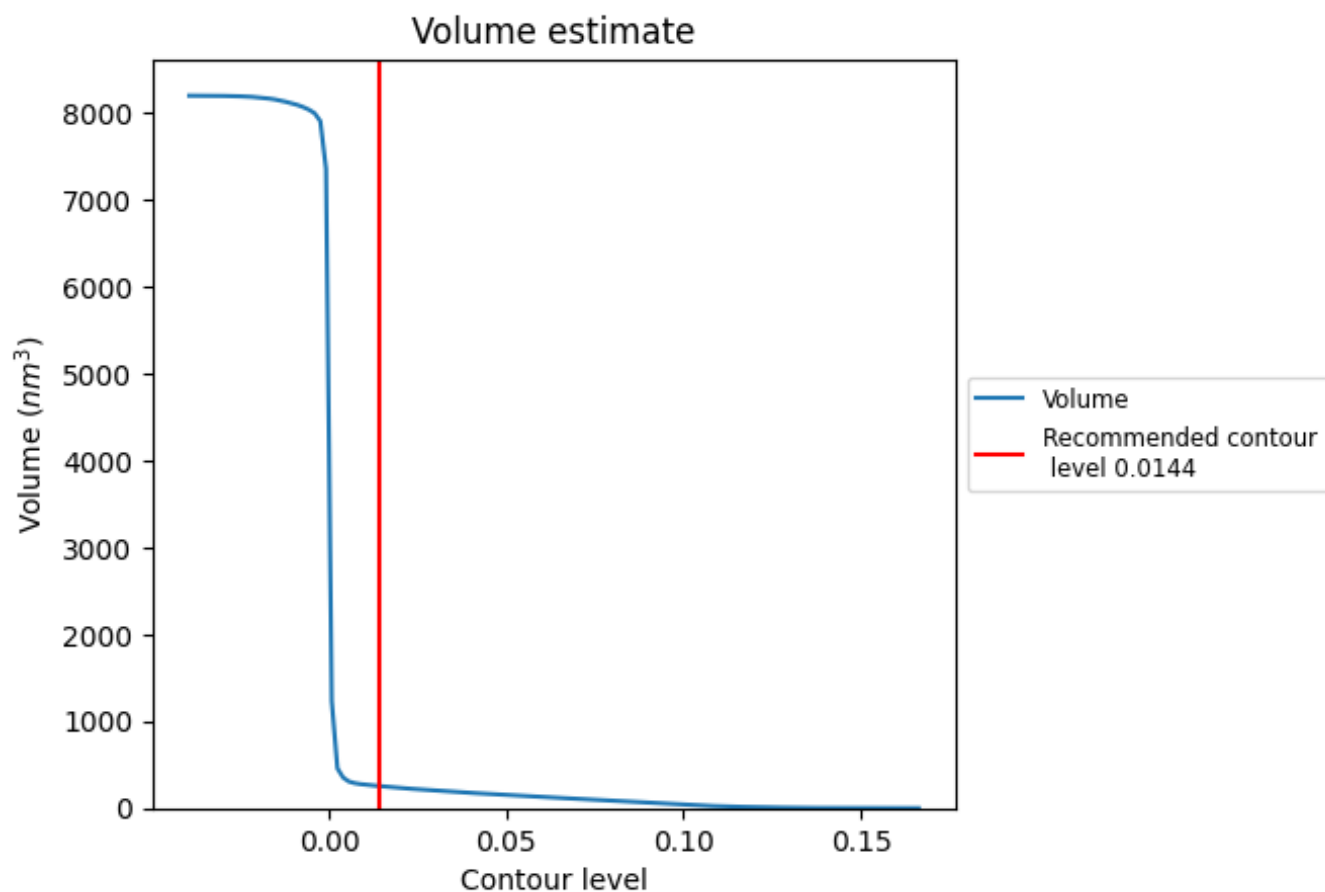
This section contains the results of statistical analysis of the map.

3.1 Map-value distribution [i](#)



The map-value distribution is plotted in 128 intervals along the x-axis. The y-axis is logarithmic. A spike in this graph at zero usually indicates that the volume has been masked.

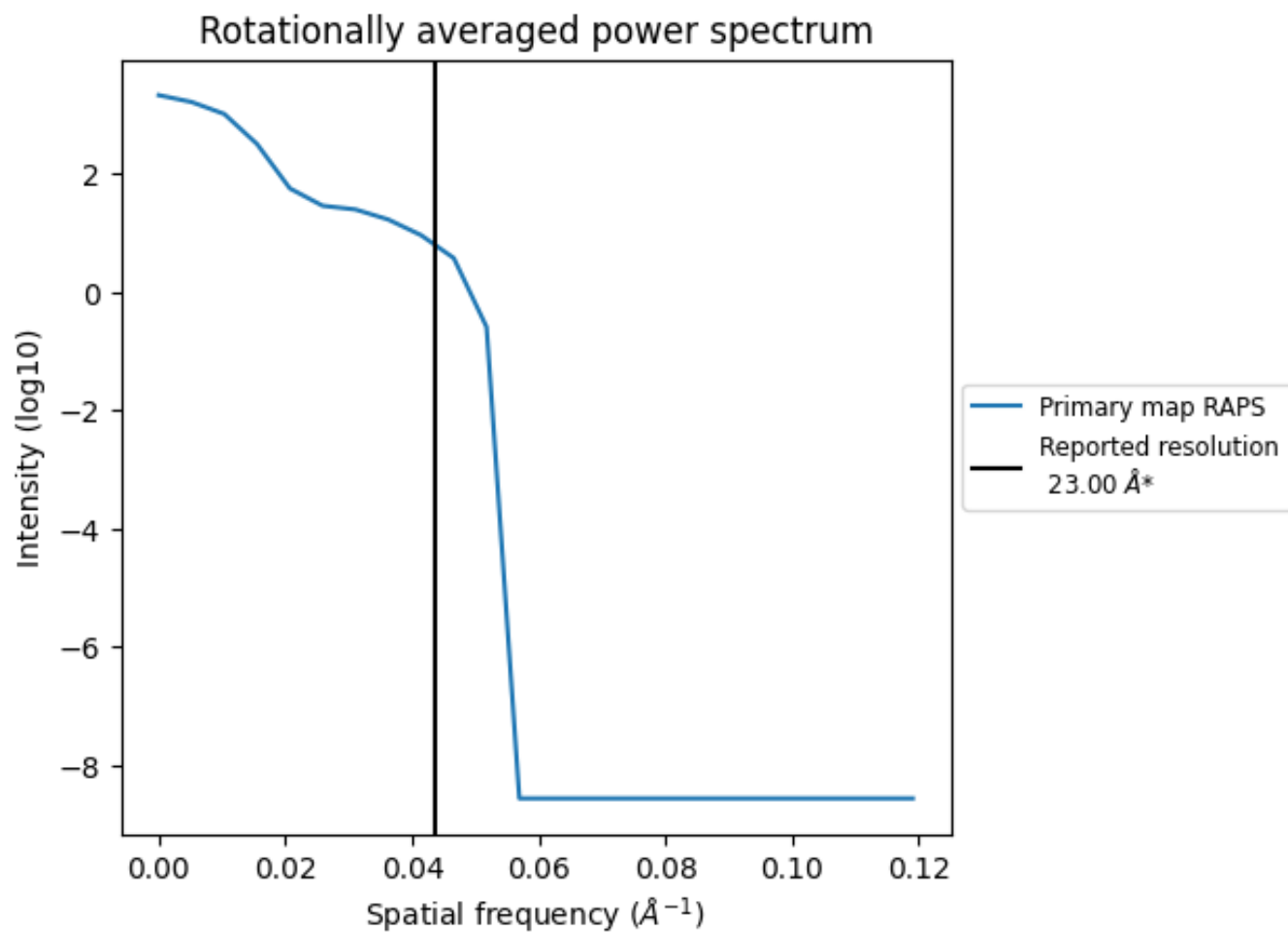
3.2 Volume estimate [i](#)



The volume at the recommended contour level is 253 nm^3 ; this corresponds to an approximate mass of 229 kDa.

The volume estimate graph shows how the enclosed volume varies with the contour level. The recommended contour level is shown as a vertical line and the intersection between the line and the curve gives the volume of the enclosed surface at the given level.

3.3 Rotationally averaged power spectrum [\(i\)](#)



*Reported resolution corresponds to spatial frequency of 0.043 Å⁻¹

4 Fourier-Shell correlation

This section was not generated. No FSC curve or half-maps provided.