



## wwPDB EM Validation Summary Report ⓘ

Jan 6, 2022 – 12:41 pm GMT

EMDB ID : EMD-14103  
Title : Microtubules in presence of 80 nM CEP97<sup>^</sup>CP110, 15 uM tubulin and GMPCPP-stabilized seeds  
Authors : Volkov, V.A.  
Deposited on : 2022-01-02  
Resolution : Not provided

This is a wwPDB EM Validation Summary Report for a publicly released PDB entry.

We welcome your comments at [validation@mail.wwpdb.org](mailto:validation@mail.wwpdb.org)

A user guide is available at

<https://www.wwpdb.org/validation/2017/EMTomogramValidationReportHelp>

with specific help available everywhere you see the ⓘ symbol.

---

The following versions of software and data (see [references ⓘ](#)) were used in the production of this report:

EMDB validation analysis : 0.0.0.dev97  
Validation Pipeline (wwPDB-VP) : 2.24

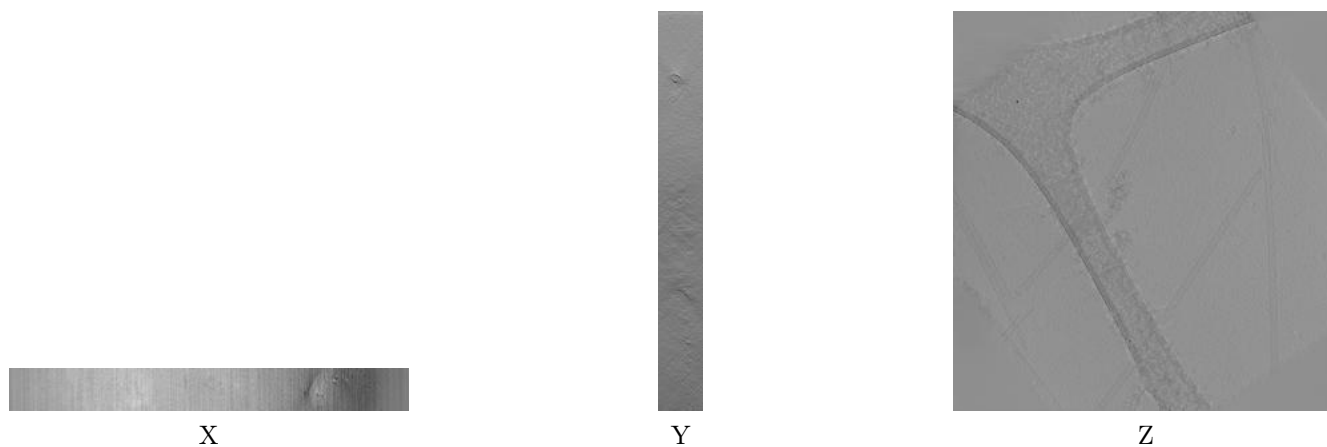
# 1 Experimental information

| Property                             | Value                       | Source    |
|--------------------------------------|-----------------------------|-----------|
| EM reconstruction method             | TOMOGRAPHY                  | Depositor |
| Imposed symmetry                     | Not Provided                |           |
| Number of tilted images used         | 61                          | Depositor |
| Resolution determination method      | Not provided                |           |
| CTF correction method                | Not provided                |           |
| Microscope                           | JEOL 3200FSC                | Depositor |
| Voltage (kV)                         | 300                         | Depositor |
| Electron dose ( $e^-/\text{\AA}^2$ ) | 100.0                       | Depositor |
| Minimum defocus (nm)                 | Not provided                |           |
| Maximum defocus (nm)                 | Not provided                |           |
| Magnification                        | Not provided                |           |
| Image detector                       | GATAN K2 SUMMIT (4k x 4k)   | Depositor |
| Maximum voxel value                  | 358.440                     | Depositor |
| Minimum voxel value                  | -585.493                    | Depositor |
| Average voxel value                  | 1.880                       | Depositor |
| Voxel value standard deviation       | 38.261                      | Depositor |
| Recommended contour level            | Not applicable              |           |
| Tomogram size (Å)                    | 13623.04, 14092.801, 1468.0 | wwPDB     |
| Tomogram dimensions                  | 1856, 1920, 200             | wwPDB     |
| Tomogram angles (°)                  | 90.0, 90.0, 90.0            | wwPDB     |
| Grid spacing (Å)                     | 7.34, 7.3400006, 7.34       | Depositor |

## 2 Tomogram visualisation [i](#)

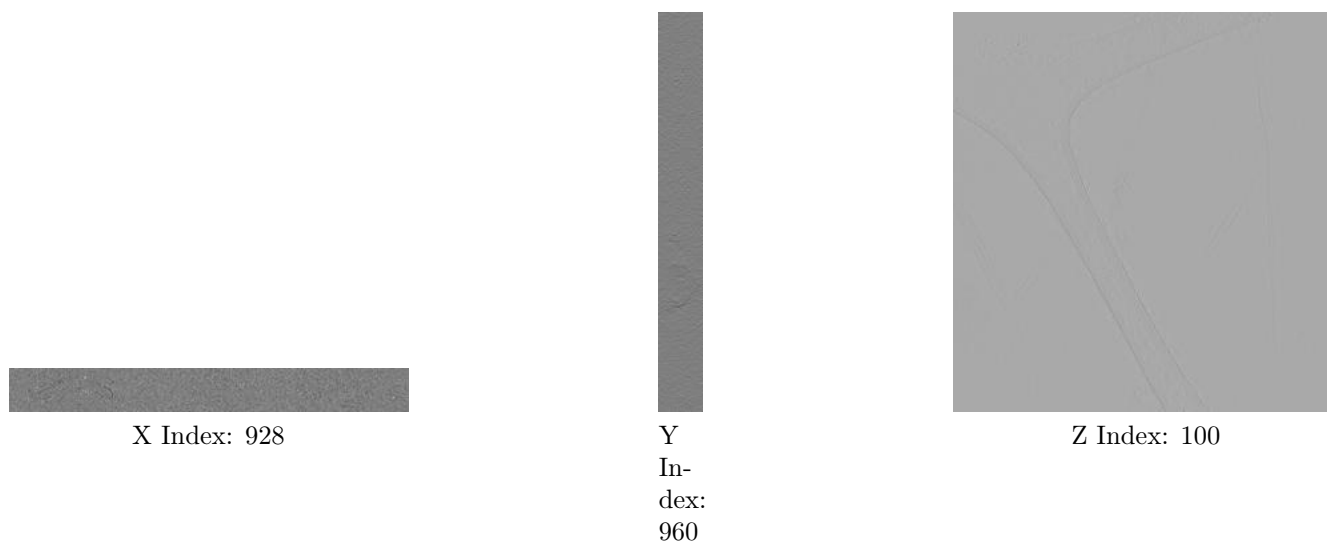
This section contains visualisations of the EMDB entry EMD-14103. These allow visual inspection of the internal detail of the tomogram and identification of artifacts.

### 2.1 Orthogonal projections [i](#)



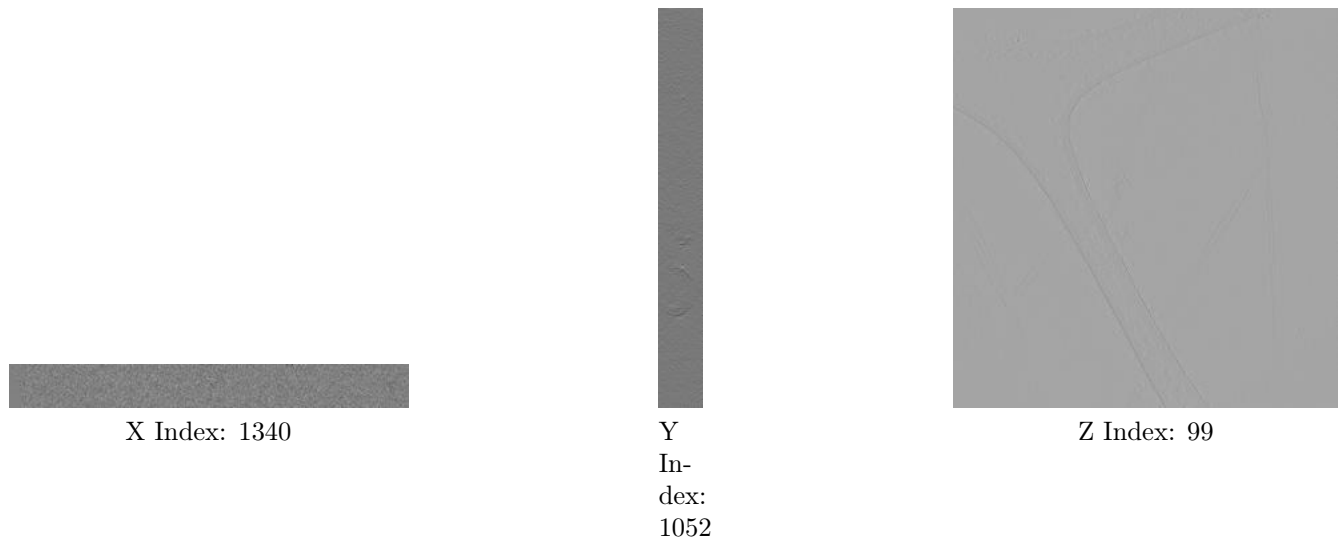
The images above show the tomogram projected in three orthogonal directions.

### 2.2 Central slices [i](#)



The images above show central slices of the tomogram in three orthogonal directions.

## 2.3 Largest variance slices [i](#)



The images above show the largest variance slices of the tomogram in three orthogonal directions.

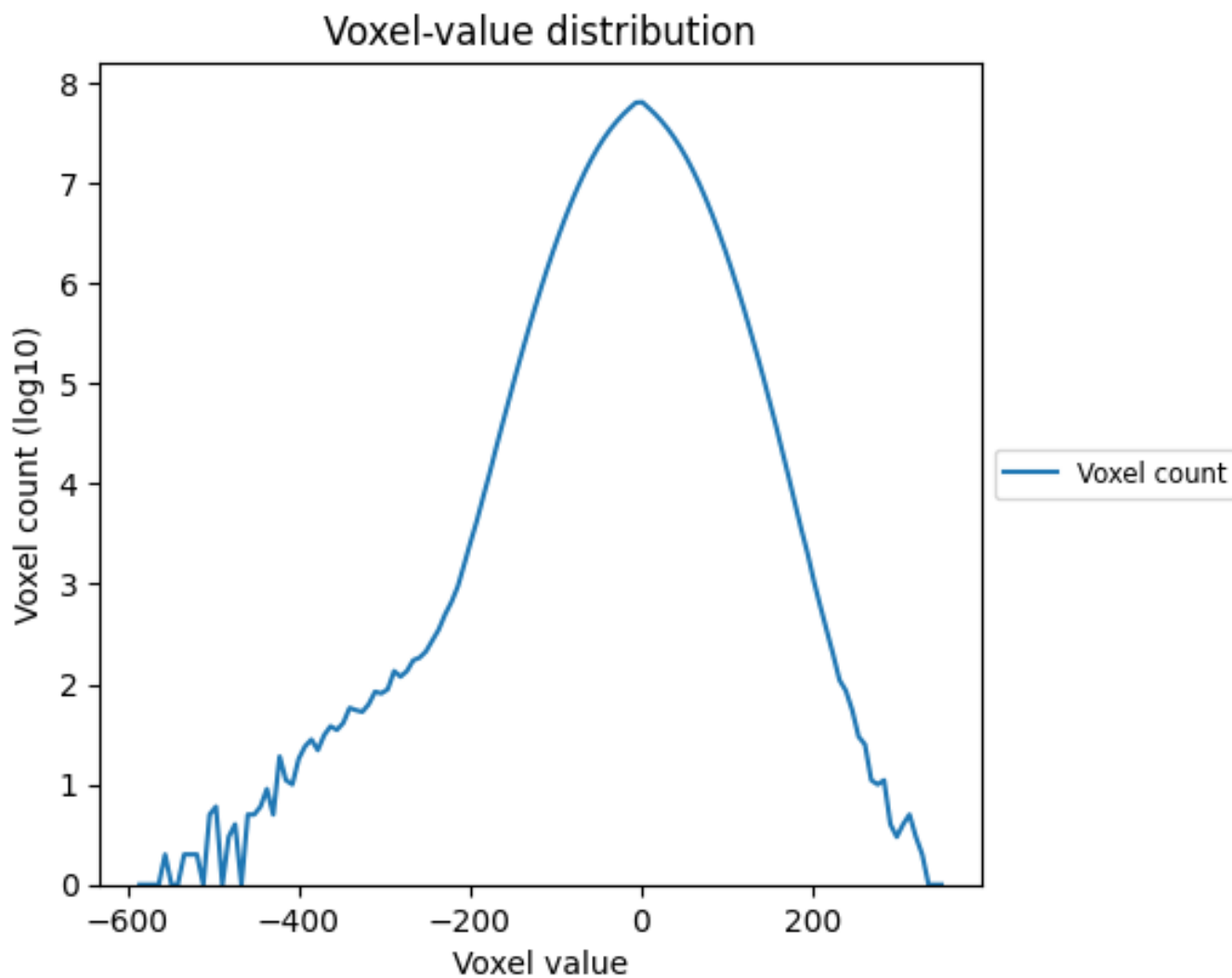
## 2.4 Mask visualisation [i](#)

This section was not generated. No masks/segmentation were deposited.

### 3 Tomogram analysis [i](#)

This section contains the results of statistical analysis of the tomogram.

#### 3.1 Voxel-value distribution [i](#)



The voxel-value distribution is plotted in 128 intervals along the x-axis. The y-axis is logarithmic.