



## wwPDB EM Validation Summary Report ⓘ

Aug 17, 2022 – 02:24 am BST

EMDB ID : EMD-13577  
Title : Alpha-synuclein amyloid fibres incubated with DNAJB1, Hsc70, and ATP  
Authors : Monistrol, J.; Saibil, H.R.  
Deposited on : 2021-09-10  
Resolution : Not provided

This is a wwPDB EM Validation Summary Report for a publicly released PDB entry.

We welcome your comments at [validation@mail.wwpdb.org](mailto:validation@mail.wwpdb.org)

A user guide is available at

<https://www.wwpdb.org/validation/2017/EMTomogramValidationReportHelp>  
with specific help available everywhere you see the ⓘ symbol.

The types of validation reports are described at <http://www.wwpdb.org/validation/2017/FAQs#types>.

---

The following versions of software and data (see [references ⓘ](#)) were used in the production of this report:

EMDB validation analysis : 0.0.1.dev8  
Validation Pipeline (wwPDB-VP) : 2.29

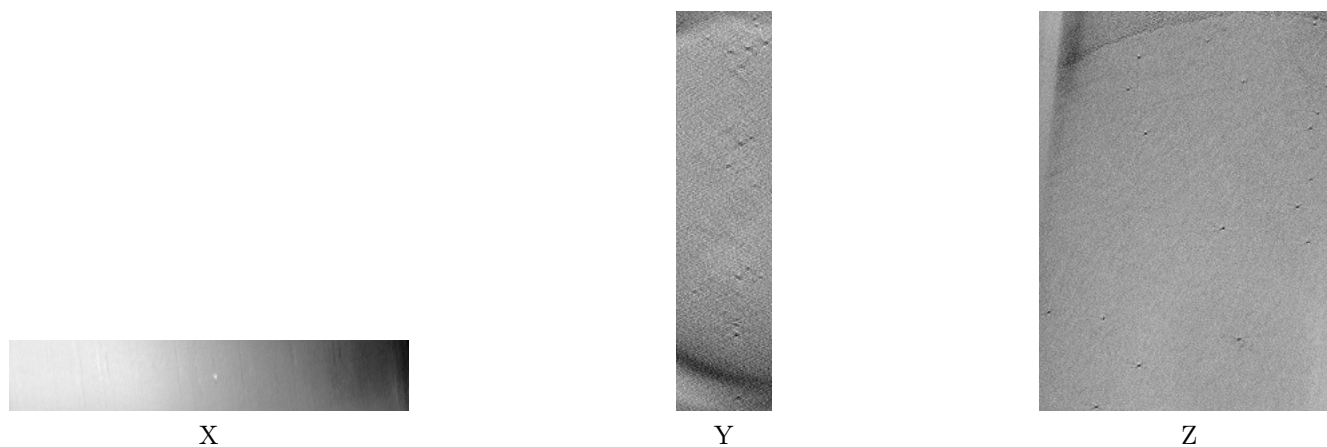
# 1 Experimental information

| Property                             | Value                      | Source    |
|--------------------------------------|----------------------------|-----------|
| EM reconstruction method             | TOMOGRAPHY                 | Depositor |
| Imposed symmetry                     | Not Provided               |           |
| Number of tilted images used         | 41                         | Depositor |
| Resolution determination method      | Not provided               |           |
| CTF correction method                | Not provided               |           |
| Microscope                           | FEI TITAN KRIOS            | Depositor |
| Voltage (kV)                         | 300                        | Depositor |
| Electron dose ( $e^-/\text{\AA}^2$ ) | 150.0                      | Depositor |
| Minimum defocus (nm)                 | 2.0                        | Depositor |
| Maximum defocus (nm)                 | 5.0                        | Depositor |
| Magnification                        | 42000.0                    | Depositor |
| Image detector                       | GATAN K3 (6k x 4k)         | Depositor |
| Maximum voxel value                  | 3084.799                   | Depositor |
| Minimum voxel value                  | -4567.230                  | Depositor |
| Average voxel value                  | 96.830                     | Depositor |
| Voxel value standard deviation       | 101.197                    | Depositor |
| Recommended contour level            | Not applicable             |           |
| Tomogram size ( $\text{\AA}$ )       | 8707.44, 11655.36, 2053.32 | wwPDB     |
| Tomogram dimensions                  | 1022, 1368, 241            | wwPDB     |
| Tomogram angles ( $^\circ$ )         | 90.0, 90.0, 90.0           | wwPDB     |
| Grid spacing ( $\text{\AA}$ )        | 8.52, 8.52, 8.52           | Depositor |

## 2 Tomogram visualisation [i](#)

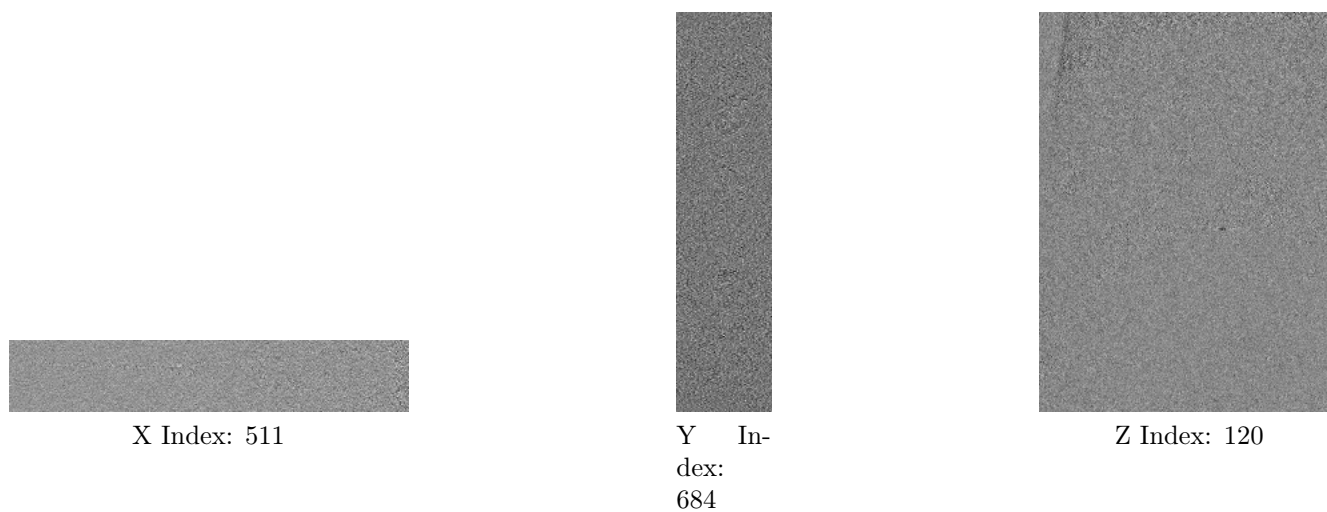
This section contains visualisations of the EMDB entry EMD-13577. These allow visual inspection of the internal detail of the tomogram and identification of artifacts.

### 2.1 Orthogonal projections [i](#)



The images above show the tomogram projected in three orthogonal directions.

### 2.2 Central slices [i](#)

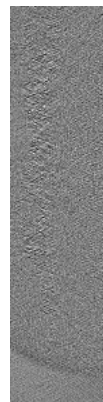


The images above show central slices of the tomogram in three orthogonal directions.

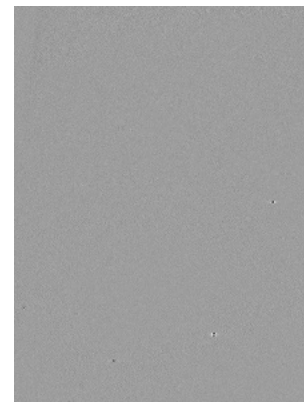
## 2.3 Largest variance slices [i](#)



X Index: 340



Y In-  
dex:  
1359



Z Index: 163

The images above show the largest variance slices of the tomogram in three orthogonal directions.

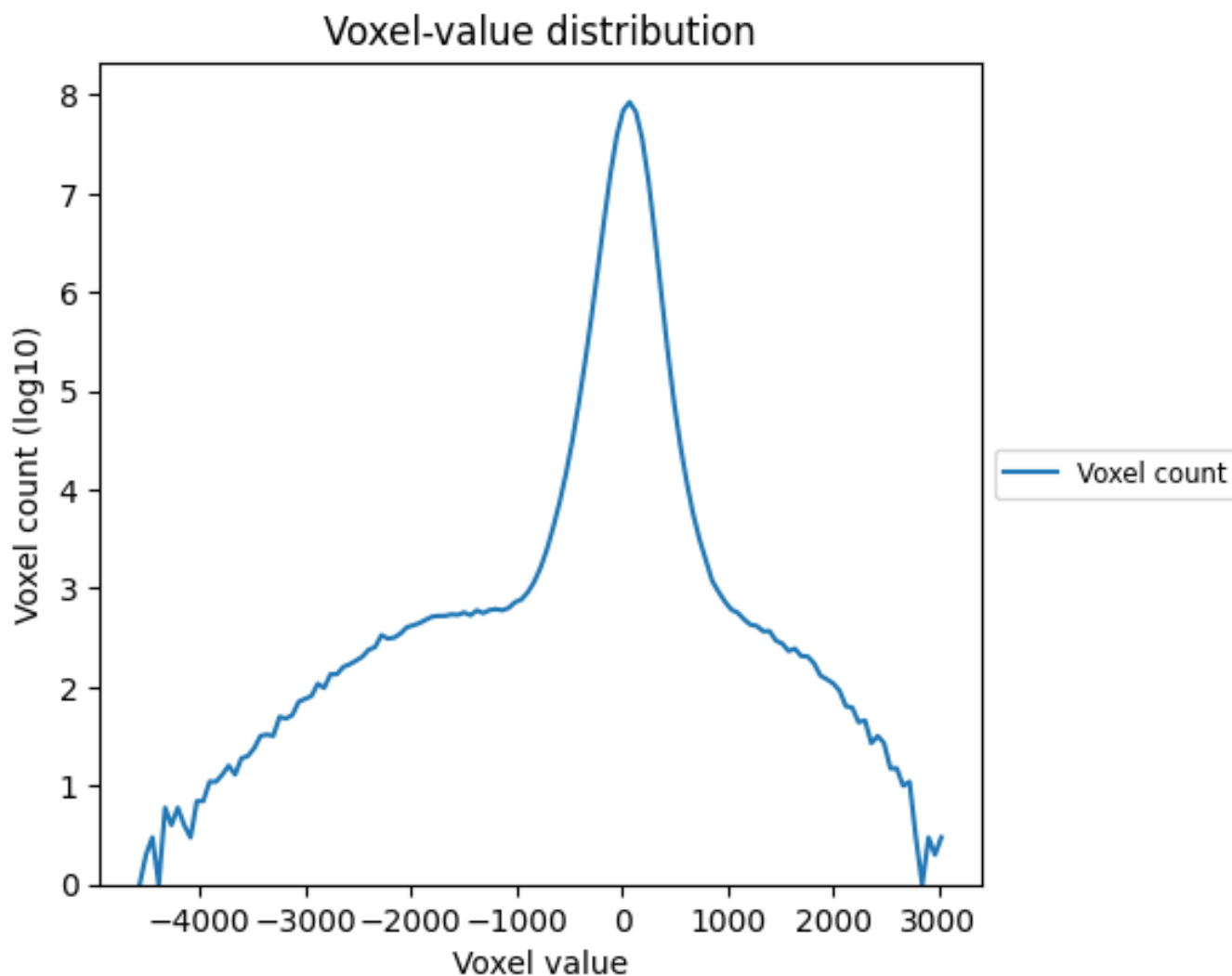
## 2.4 Mask visualisation [i](#)

This section was not generated. No masks/segmentation were deposited.

### 3 Tomogram analysis [i](#)

This section contains the results of statistical analysis of the tomogram.

#### 3.1 Voxel-value distribution [i](#)



The voxel-value distribution is plotted in 128 intervals along the x-axis. The y-axis is logarithmic.