



wwPDB EM Validation Summary Report ⓘ

Oct 27, 2021 – 04:04 pm BST

EMDB ID : EMD-13197
Title : Cryo-ET of axons grown from human cerebral organoids, expressing ESYT1-GFP
Authors : Hoffmann, P.C.; Giandomenico, S.L.; Ganeva, I.; Wozny, M.R.; Sutcliffe, M.; Lancaster, M.A.; Kukulski, W.
Deposited on : 2021-07-14
Resolution : Not provided

This is a wwPDB EM Validation Summary Report for a publicly released PDB entry.

We welcome your comments at validation@mail.wwpdb.org

A user guide is available at

<https://www.wwpdb.org/validation/2017/EMTomogramValidationReportHelp>

with specific help available everywhere you see the ⓘ symbol.

The following versions of software and data (see [references ⓘ](#)) were used in the production of this report:

EMDB validation analysis : 0.0.0.dev97
Validation Pipeline (wwPDB-VP) : 2.23.2

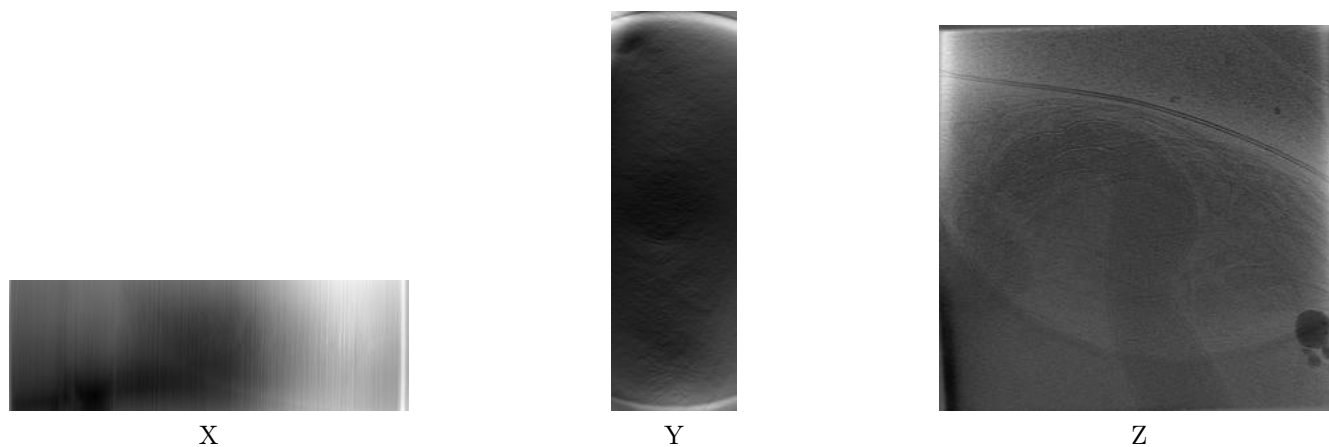
1 Experimental information

| Property | Value | Source |
|--------------------------------------|---------------------------|-----------|
| EM reconstruction method | TOMOGRAPHY | Depositor |
| Imposed symmetry | Not Provided | |
| Number of tilted images used | 121 | Depositor |
| Resolution determination method | Not provided | |
| CTF correction method | Not provided | |
| Microscope | FEI TITAN KRIOS | Depositor |
| Voltage (kV) | 300 | Depositor |
| Electron dose ($e^-/\text{\AA}^2$) | 1.0 | Depositor |
| Minimum defocus (nm) | Not provided | |
| Maximum defocus (nm) | Not provided | |
| Magnification | Not provided | |
| Image detector | GATAN K2 SUMMIT (4k x 4k) | Depositor |
| Maximum voxel value | 127.000 | Depositor |
| Minimum voxel value | -128.000 | Depositor |
| Average voxel value | -32.782 | Depositor |
| Voxel value standard deviation | 12.521 | Depositor |
| Recommended contour level | Not applicable | |
| Tomogram size (\AA) | 14121.6, 13636.17, 4413.0 | wwPDB |
| Tomogram dimensions | 960, 927, 300 | wwPDB |
| Tomogram angles ($^\circ$) | 90.0, 90.0, 90.0 | wwPDB |
| Grid spacing (\AA) | 14.71, 14.71, 14.71 | Depositor |

2 Tomogram visualisation [i](#)

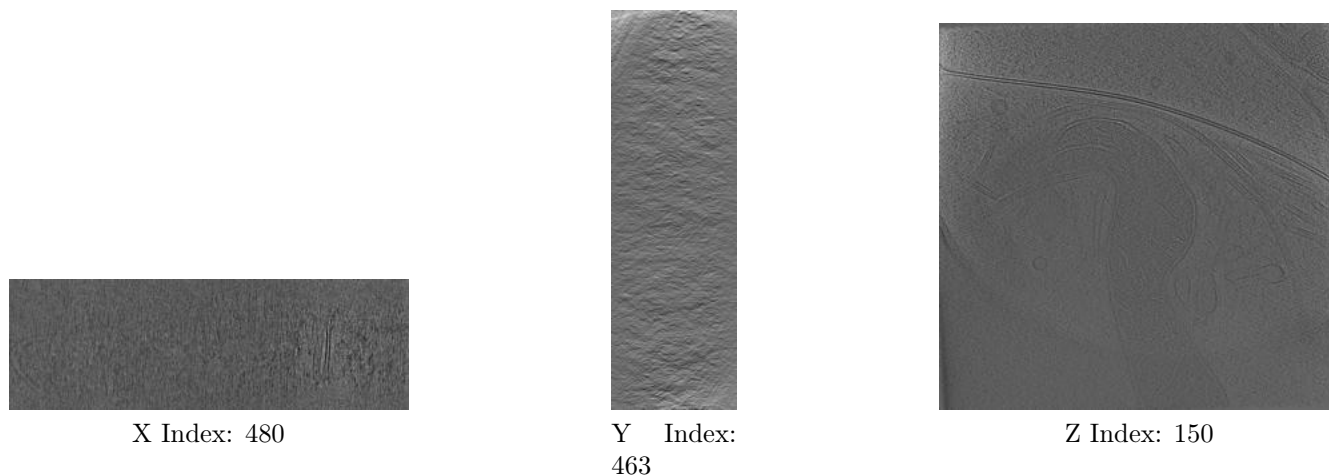
This section contains visualisations of the EMDB entry EMD-13197. These allow visual inspection of the internal detail of the tomogram and identification of artifacts.

2.1 Orthogonal projections [i](#)



The images above show the tomogram projected in three orthogonal directions.

2.2 Central slices [i](#)



The images above show central slices of the tomogram in three orthogonal directions.

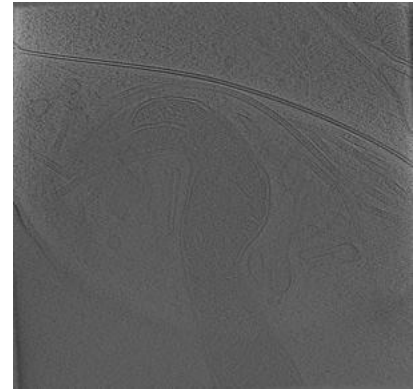
2.3 Largest variance slices [i](#)



X Index: 15



Y Index:
788



Z Index: 154

The images above show the largest variance slices of the tomogram in three orthogonal directions.

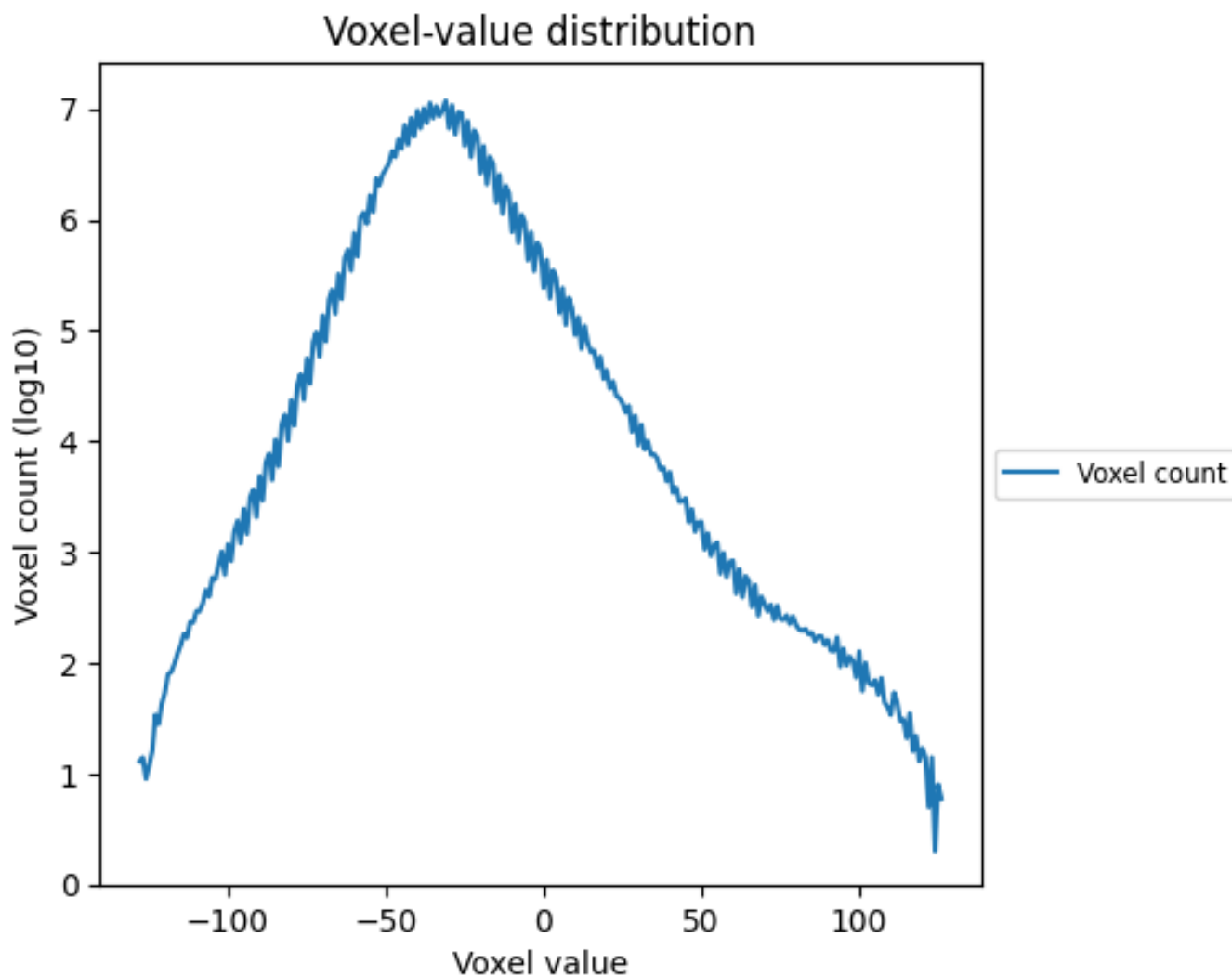
2.4 Mask visualisation [i](#)

This section was not generated. No masks/segmentation were deposited.

3 Tomogram analysis [i](#)

This section contains the results of statistical analysis of the tomogram.

3.1 Voxel-value distribution [i](#)



The voxel-value distribution is plotted in 128 intervals along the x-axis. The y-axis is logarithmic.