



## wwPDB EM Validation Summary Report ⓘ

Mar 31, 2021 – 09:40 am BST

EMDB ID : EMD-1155  
Title : The mechanism of HIV-1 core assembly: insights from three-dimensional reconstructions of authentic virions.  
Authors : Briggs, J.A.G.; Grunewald, K.; Glass, B.; Forster, F.  
Deposited on : 2005-08-30  
Resolution : Not provided

This is a wwPDB EM Validation Summary Report for a publicly released PDB entry.

We welcome your comments at [validation@mail.wwpdb.org](mailto:validation@mail.wwpdb.org)

A user guide is available at

<https://www.wwpdb.org/validation/2017/EMTomogramValidationReportHelp>

with specific help available everywhere you see the ⓘ symbol.

---

The following versions of software and data (see [references ⓘ](#)) were used in the production of this report:

EMDB validation analysis : 0.0.0.dev75  
Validation Pipeline (wwPDB-VP) : 2.18

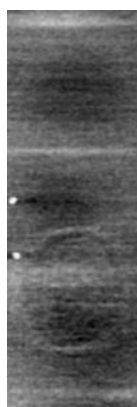
# 1 Experimental information

Property	Value	Source
EM reconstruction method	TOMOGRAPHY	Depositor
Imposed symmetry	Not Provided	
Number of tilted images used	Not provided	
Resolution determination method	Not provided	
CTF correction method	Not provided	
Microscope	FEI/PHILIPS CM300FEG/T	Depositor
Voltage (kV)	300	Depositor
Electron dose ( $e^-/\text{\AA}^2$ )	50	Depositor
Minimum defocus (nm)	5.5	Depositor
Maximum defocus (nm)	6.5	Depositor
Magnification	36500.0	Depositor
Image detector	Not provided	
Maximum voxel value	127.000	Depositor
Minimum voxel value	-128.000	Depositor
Average voxel value	5.039	Depositor
Voxel value standard deviation	12.400	Depositor
Recommended contour level	21.0	Depositor
Tomogram size ( $\text{\AA}$ )	1492.4, 2312.4, 4608.4	wwPDB
Tomogram dimensions	141, 91, 281	wwPDB
Tomogram angles ( $^\circ$ )	90, 90, 90	wwPDB
Grid spacing ( $\text{\AA}$ )	16.4, 16.4, 16.4	Depositor

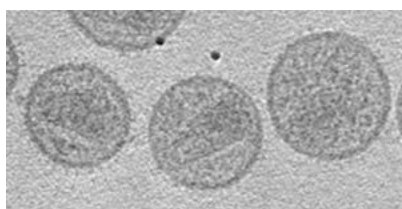
## 2 Tomogram visualisation [i](#)

This section contains visualisations of the EMDB entry EMD-1155. These allow visual inspection of the internal detail of the tomogram and identification of artifacts.

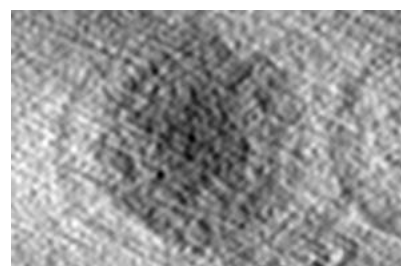
### 2.1 Orthogonal projections [i](#)



X



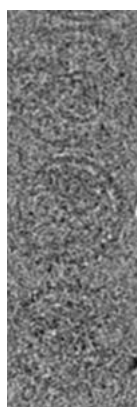
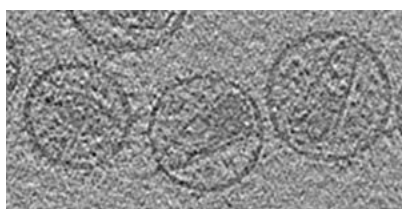
Y



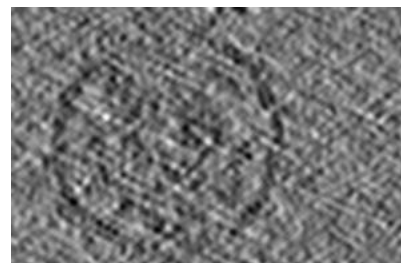
Z

The images above show the tomogram projected in three orthogonal directions.

### 2.2 Central slices [i](#)

X Index:  
70

Y Index: 45



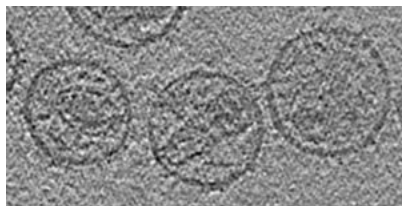
Z Index: 140

The images above show central slices of the tomogram in three orthogonal directions.

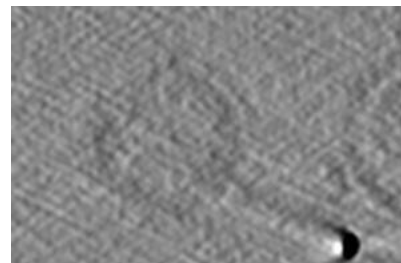
## 2.3 Largest variance slices [i](#)



X Index:  
81



Y Index: 39



Z Index: 108

The images above show the largest variance slices of the tomogram in three orthogonal directions.

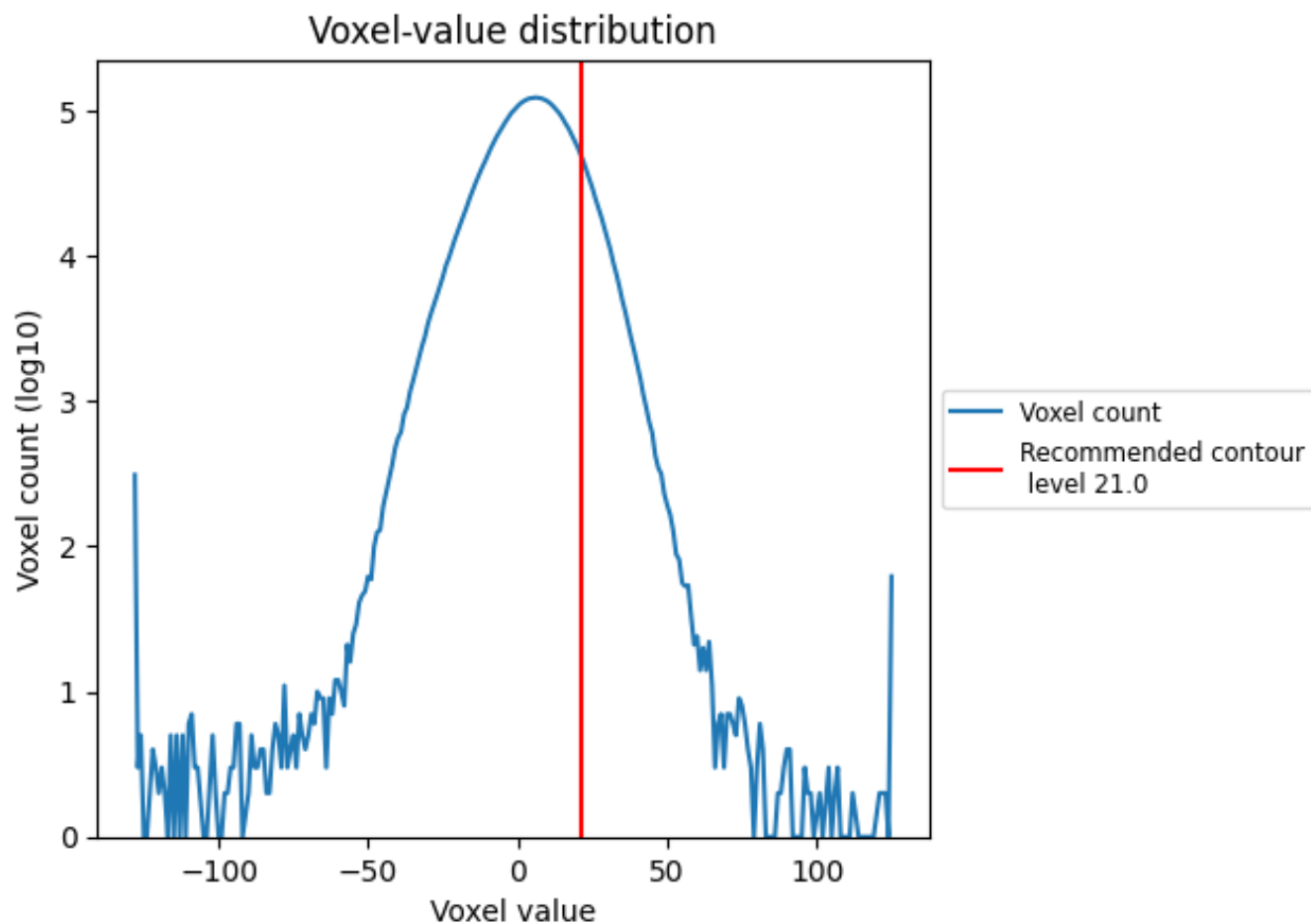
## 2.4 Mask visualisation [i](#)

This section was not generated. No masks/segmentation were deposited.

### 3 Tomogram analysis [i](#)

This section contains the results of statistical analysis of the tomogram.

#### 3.1 Voxel-value distribution [i](#)



The voxel-value distribution is plotted in 128 intervals along the x-axis. The y-axis is logarithmic.