



wwPDB EM Validation Summary Report ⓘ

Mar 31, 2021 – 09:36 am BST

EMDB ID : EMD-11065
Title : In situ cryo-electron tomogram from an interphase HeLa Kyoto cell of cytoskeletal network at the nucleo-cytoplasmic boundary
Authors : Chakraborty, S.; Mahamid, J.; Baumeister, W.
Deposited on : 2020-05-22
Resolution : Not provided

This is a wwPDB EM Validation Summary Report for a publicly released PDB entry.

We welcome your comments at validation@mail.wwpdb.org

A user guide is available at

<https://www.wwpdb.org/validation/2017/EMTomogramValidationReportHelp>

with specific help available everywhere you see the ⓘ symbol.

The following versions of software and data (see [references ⓘ](#)) were used in the production of this report:

EMDB validation analysis : 0.0.0.dev75
Validation Pipeline (wwPDB-VP) : 2.18

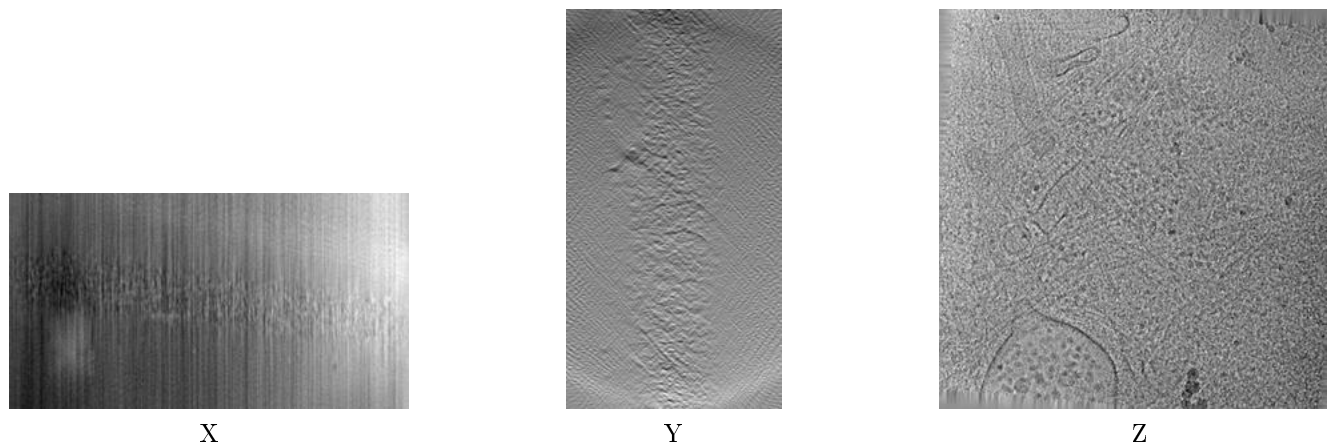
1 Experimental information

| Property | Value | Source |
|--------------------------------------|--------------------------------|-----------|
| EM reconstruction method | TOMOGRAPHY | Depositor |
| Imposed symmetry | Not Provided | |
| Number of tilted images used | 56 | Depositor |
| Resolution determination method | Not provided | |
| CTF correction method | Not provided | |
| Microscope | FEI TITAN KRIOS | Depositor |
| Voltage (kV) | 300 | Depositor |
| Electron dose ($e^-/\text{\AA}^2$) | 1.1 | Depositor |
| Minimum defocus (nm) | 0.2 | Depositor |
| Maximum defocus (nm) | 0.2 | Depositor |
| Magnification | 42000.0 | Depositor |
| Image detector | GATAN K2 SUMMIT (4k x 4k) | Depositor |
| Maximum voxel value | 57.731 | Depositor |
| Minimum voxel value | -60.837 | Depositor |
| Average voxel value | 1.346 | Depositor |
| Voxel value standard deviation | 4.807 | Depositor |
| Recommended contour level | Not applicable | |
| Tomogram size (Å) | 12694.993, 12694.993, 6839.975 | wwPDB |
| Tomogram dimensions | 464, 464, 250 | wwPDB |
| Tomogram angles (°) | 90.0, 90.0, 90.0 | wwPDB |
| Grid spacing (Å) | 27.3599, 27.3599, 27.3599 | Depositor |

2 Tomogram visualisation [i](#)

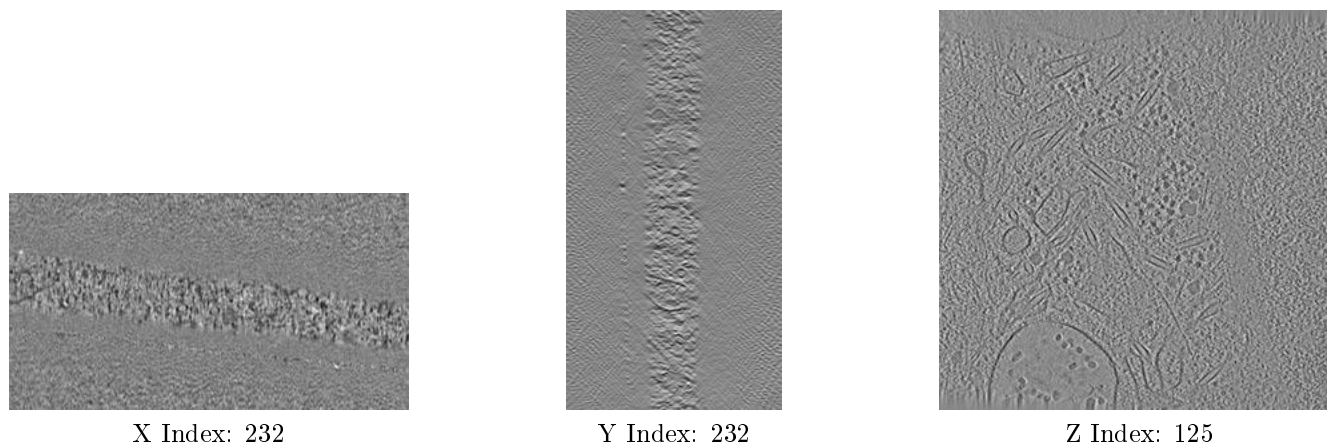
This section contains visualisations of the EMDB entry EMD-11065. These allow visual inspection of the internal detail of the tomogram and identification of artifacts.

2.1 Orthogonal projections [i](#)



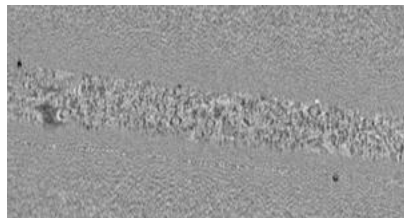
The images above show the tomogram projected in three orthogonal directions.

2.2 Central slices [i](#)

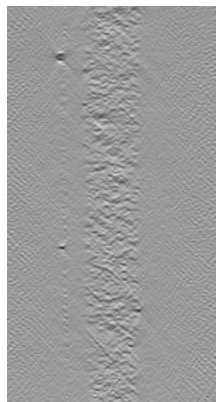


The images above show central slices of the tomogram in three orthogonal directions.

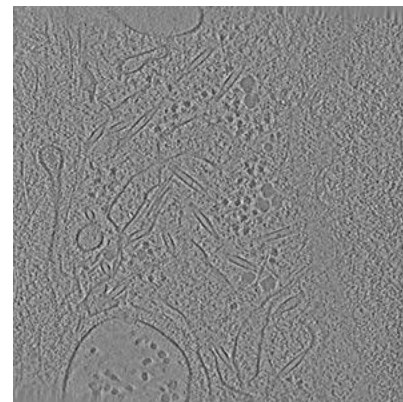
2.3 Largest variance slices [i](#)



X Index: 236



Y Index: 244



Z Index: 121

The images above show the largest variance slices of the tomogram in three orthogonal directions.

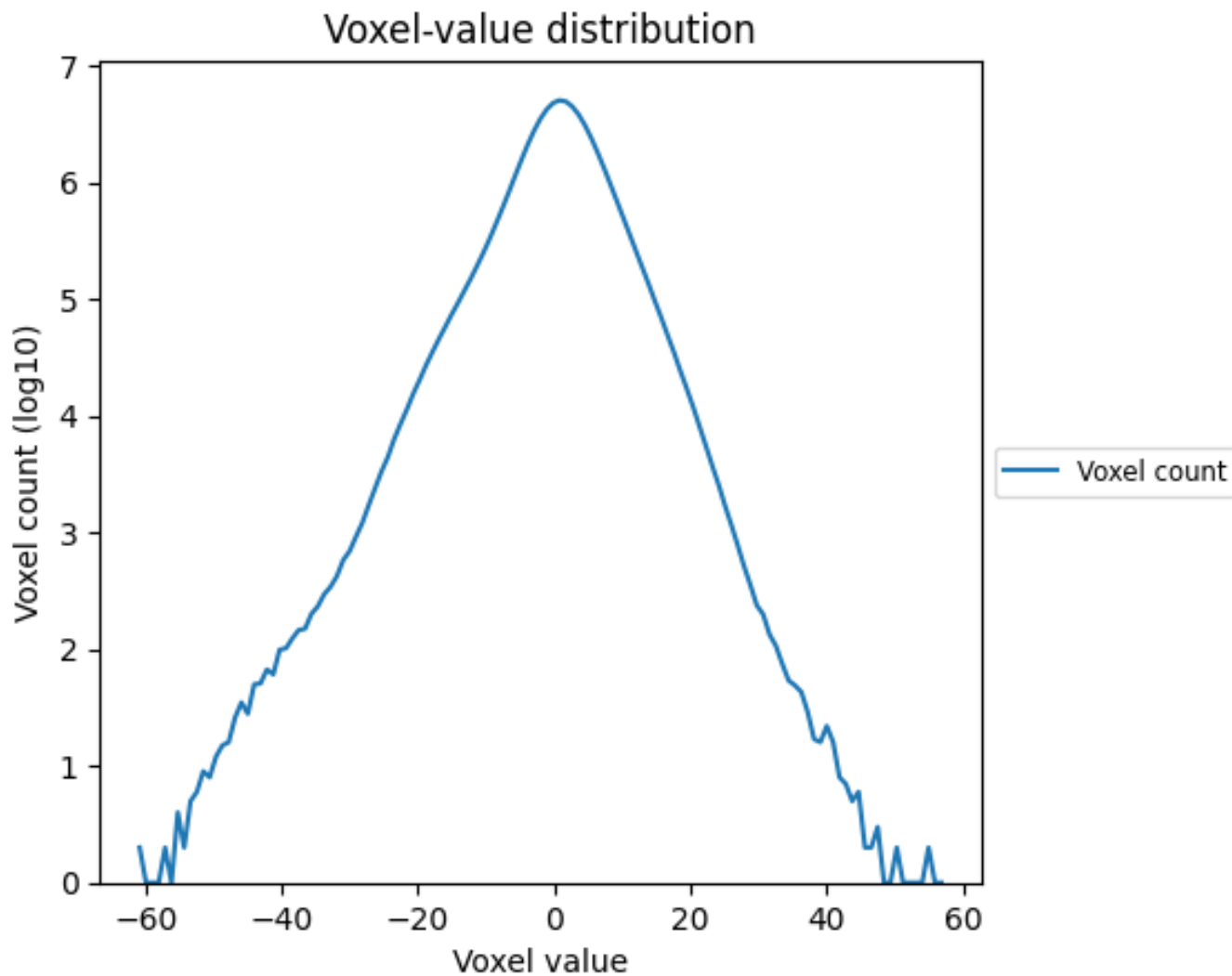
2.4 Mask visualisation [i](#)

This section was not generated. No masks/segmentation were deposited.

3 Tomogram analysis [i](#)

This section contains the results of statistical analysis of the tomogram.

3.1 Voxel-value distribution [i](#)



The voxel-value distribution is plotted in 128 intervals along the x-axis. The y-axis is logarithmic.