



## Full wwPDB EM Validation Report ⓘ

Mar 31, 2021 – 09:32 am BST

EMDB ID : EMD-10904  
Title : Electron tomography data to study mitochondria within mouse photoreceptor inner segments.  
Authors : Meschede, I.P.; Ovenden, N.C.; Seabra, M.C.; Futter, C.E.; Votruba, M.; Cheetham, M.E.; Burgoyne, T.  
Deposited on : 2020-04-22  
Resolution : Not provided

This is a Full wwPDB EM Validation Report for a publicly released PDB entry.

We welcome your comments at [validation@mail.wwpdb.org](mailto:validation@mail.wwpdb.org)

A user guide is available at

<https://www.wwpdb.org/validation/2017/EMTomogramValidationReportHelp>

with specific help available everywhere you see the ⓘ symbol.

---

The following versions of software and data (see [references ⓘ](#)) were used in the production of this report:

EMDB validation analysis : 0.0.0.dev75  
Validation Pipeline (wwPDB-VP) : 2.18

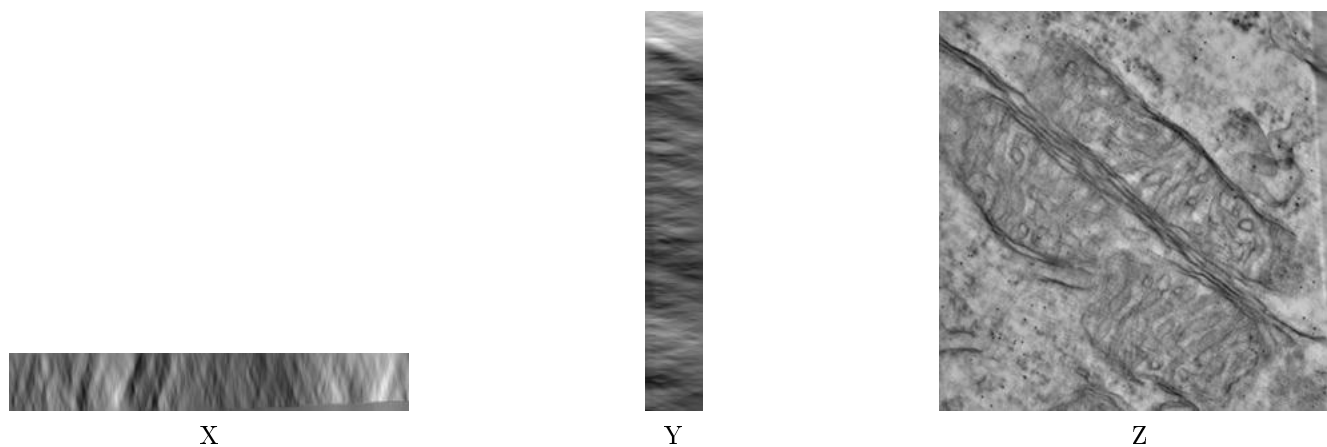
# 1 Experimental information

| Property                             | Value                          | Source    |
|--------------------------------------|--------------------------------|-----------|
| EM reconstruction method             | TOMOGRAPHY                     | Depositor |
| Imposed symmetry                     | Not Provided                   |           |
| Number of tilted images used         | 60                             | Depositor |
| Resolution determination method      | Not provided                   |           |
| CTF correction method                | Not provided                   |           |
| Microscope                           | JEOL 1400                      | Depositor |
| Voltage (kV)                         | 120                            | Depositor |
| Electron dose ( $e^-/\text{\AA}^2$ ) | 50.0                           | Depositor |
| Minimum defocus (nm)                 | Not provided                   |           |
| Maximum defocus (nm)                 | Not provided                   |           |
| Magnification                        | Not provided                   |           |
| Image detector                       | GATAN ORIUS SC1000 (4k x 2.7k) | Depositor |
| Maximum voxel value                  | 127.000                        | Depositor |
| Minimum voxel value                  | -128.000                       | Depositor |
| Average voxel value                  | -18.936                        | Depositor |
| Voxel value standard deviation       | 13.651                         | Depositor |
| Recommended contour level            | Not applicable                 |           |
| Tomogram size (Å)                    | 12960.32, 12960.32, 1852.6201  | wwPDB     |
| Tomogram dimensions                  | 1616, 1616, 231                | wwPDB     |
| Tomogram angles (°)                  | 90.0, 90.0, 90.0               | wwPDB     |
| Grid spacing (Å)                     | 8.02, 8.02, 8.02               | Depositor |

## 2 Tomogram visualisation [i](#)

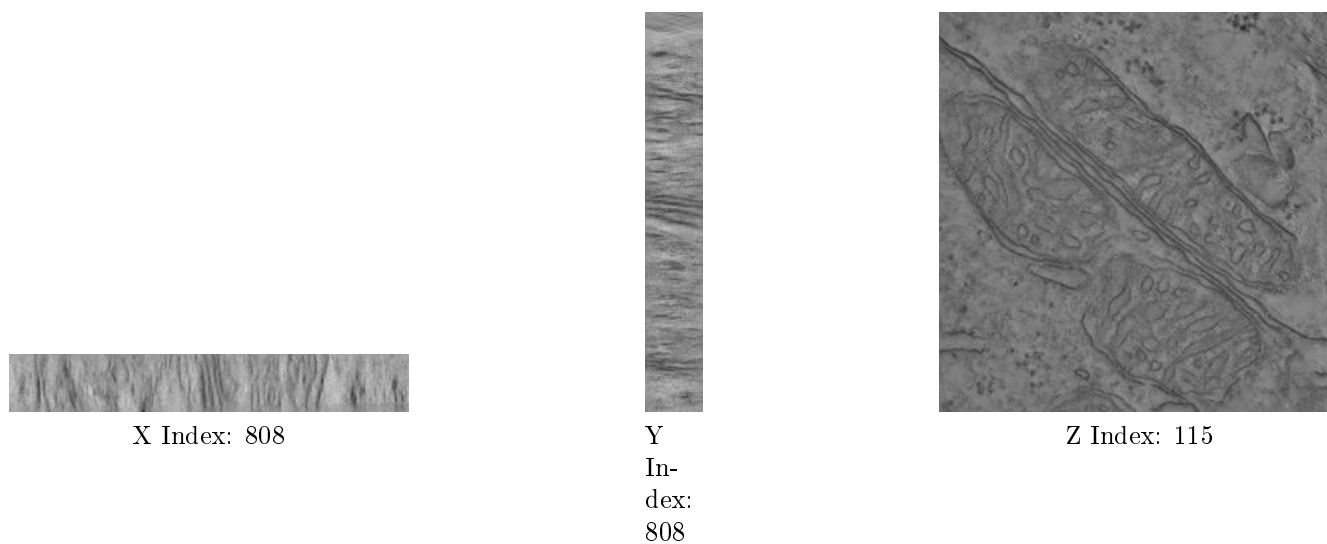
This section contains visualisations of the EMDB entry EMD-10904. These allow visual inspection of the internal detail of the tomogram and identification of artifacts.

### 2.1 Orthogonal projections [i](#)



The images above show the tomogram projected in three orthogonal directions.

### 2.2 Central slices [i](#)



The images above show central slices of the tomogram in three orthogonal directions.

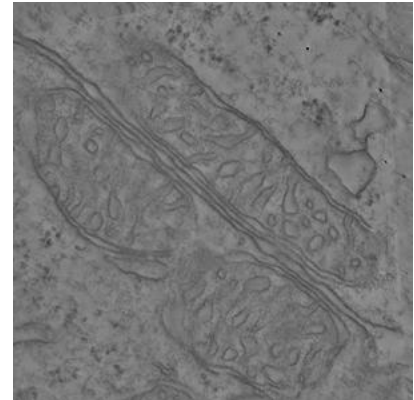
## 2.3 Largest variance slices [i](#)



X Index: 1422



Y  
In-  
dex:  
1425



Z Index: 68

The images above show the largest variance slices of the tomogram in three orthogonal directions.

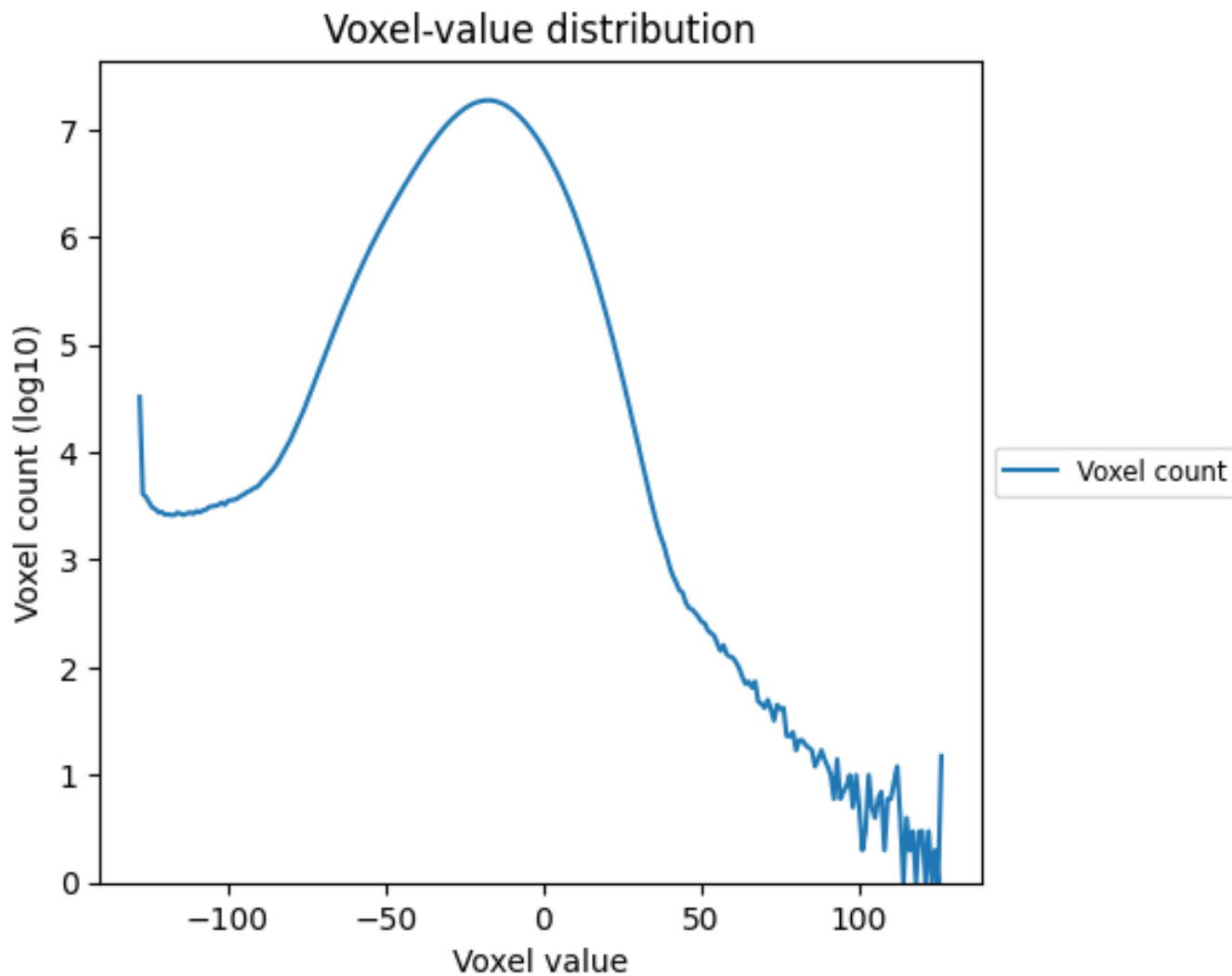
## 2.4 Mask visualisation [i](#)

This section was not generated. No masks/segmentation were deposited.

### 3 Tomogram analysis [i](#)

This section contains the results of statistical analysis of the tomogram.

#### 3.1 Voxel-value distribution [i](#)



The voxel-value distribution is plotted in 128 intervals along the x-axis. The y-axis is logarithmic.