



wwPDB EM Validation Summary Report ⓘ

Dec 5, 2020 – 12:17 pm GMT

EMDB ID : EMD-1053
Title : Untangling desmosomal knots with electron tomography.
Authors : He, W.; Cowin, P.; Stokes, D.L.
Deposited on : 2003-08-28
Resolution : 20.00 Å(reported)

This is a wwPDB EM Validation Summary Report for a publicly released PDB entry.

We welcome your comments at validation@mail.wwpdb.org

A user guide is available at

<https://www.wwpdb.org/validation/2017/EMTomogramValidationReportHelp>

with specific help available everywhere you see the ⓘ symbol.

The following versions of software and data (see [references ⓘ](#)) were used in the production of this report:

EMDB validation analysis : 0.0.0.dev61
Validation Pipeline (wwPDB-VP) : 2.15.1

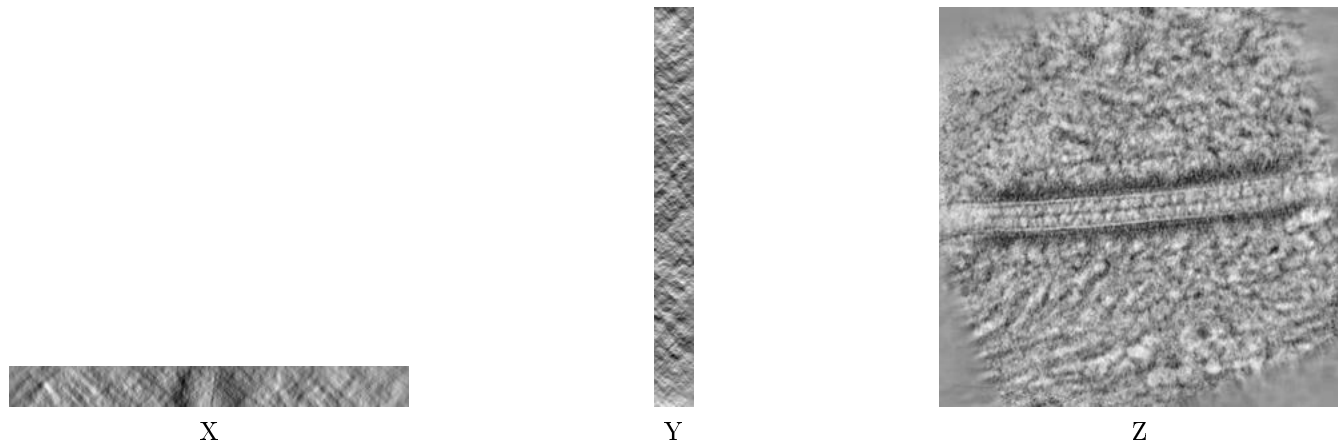
1 Experimental information

| Property | Value | Source |
|--------------------------------------|-------------------------|-----------|
| EM reconstruction method | TOMOGRAPHY | Depositor |
| Imposed symmetry | Not Provided | |
| Number of tilted images used | 150 | Depositor |
| Resolution determination method | OTHER | Depositor |
| CTF correction method | no CTF correction | Depositor |
| Microscope | FEI/PHILIPS CM200FEG | Depositor |
| Voltage (kV) | 200 | Depositor |
| Electron dose ($e^-/\text{\AA}^2$) | Not provided | |
| Minimum defocus (nm) | 0.3 | Depositor |
| Maximum defocus (nm) | 0.5 | Depositor |
| Magnification | 38000.0 | Depositor |
| Image detector | GATAN MULTISCAN | Depositor |
| Maximum voxel value | 3110.000 | Depositor |
| Minimum voxel value | -3874.000 | Depositor |
| Average voxel value | 1396.460 | Depositor |
| Voxel value standard deviation | 414.104 | Depositor |
| Recommended contour level | 2020.0 | Depositor |
| Tomogram size (Å) | 4766.72, 4766.72, 465.5 | wwPDB |
| Tomogram dimensions | 512, 512, 50 | wwPDB |
| Tomogram angles (°) | 90, 90, 90 | wwPDB |
| Grid spacing (Å) | 9.31, 9.31, 9.31 | Depositor |

2 Tomogram visualisation [i](#)

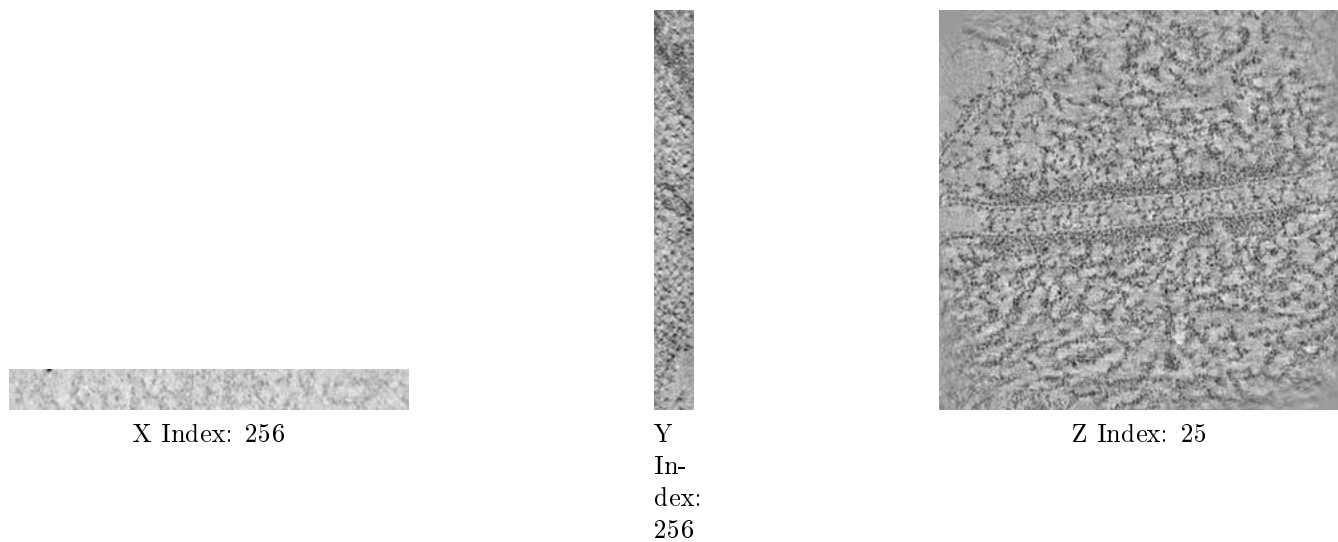
This section contains visualisations of the EMDB entry EMD-1053. These allow visual inspection of the internal detail of the tomogram and identification of artifacts.

2.1 Orthogonal projections [i](#)



The images above show the tomogram projected in three orthogonal directions.

2.2 Central slices [i](#)



The images above show central slices of the tomogram in three orthogonal directions.

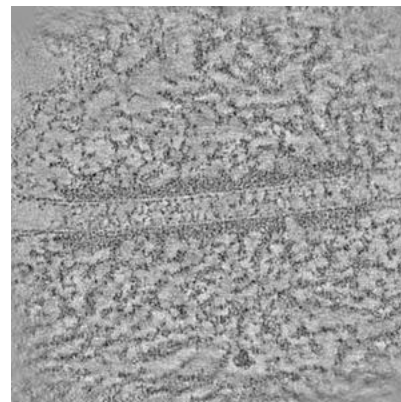
2.3 Largest variance slices [i](#)



X Index: 268



Y
In-
dex:
217



Z Index: 22

The images above show the largest variance slices of the tomogram in three orthogonal directions.

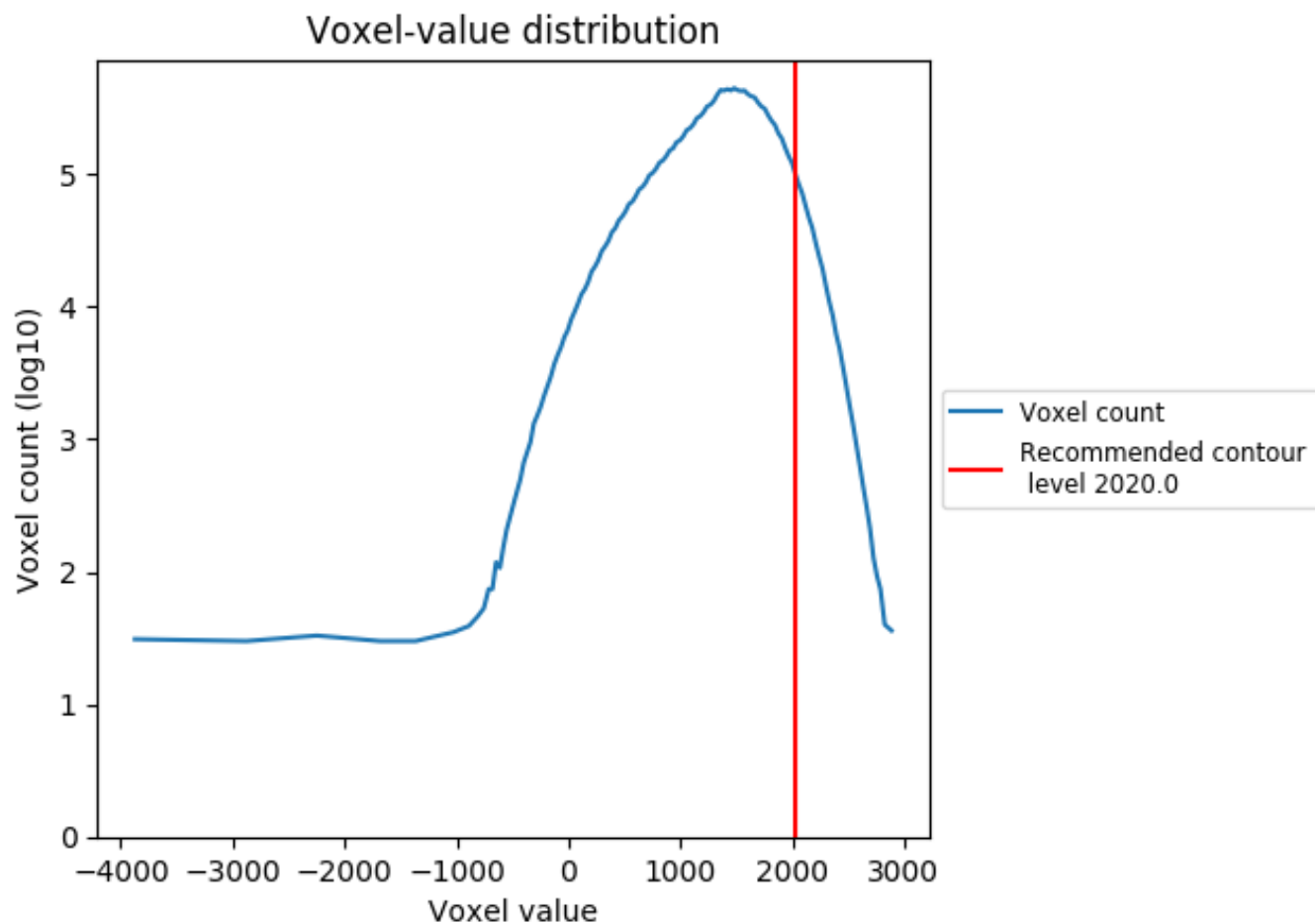
2.4 Mask visualisation [i](#)

This section was not generated. No masks/segmentation were deposited.

3 Tomogram analysis [i](#)

This section contains the results of statistical analysis of the tomogram.

3.1 Voxel-value distribution [i](#)



The voxel-value distribution is plotted in 128 intervals along the x-axis. The y-axis is logarithmic.